

Correction: A Severe Combined Immunodeficient-hu *In Vivo* Mouse Model of Human Primary Mantle Cell Lymphoma

In this article (Clin Cancer Res 2008;14:2154-60), which was published in the April 1, 2008, issue of *Clinical Cancer Research* (1), the authors mistakenly provided duplicate histology micrographs in Figs. 3C (H&E/0.5M) and 4A

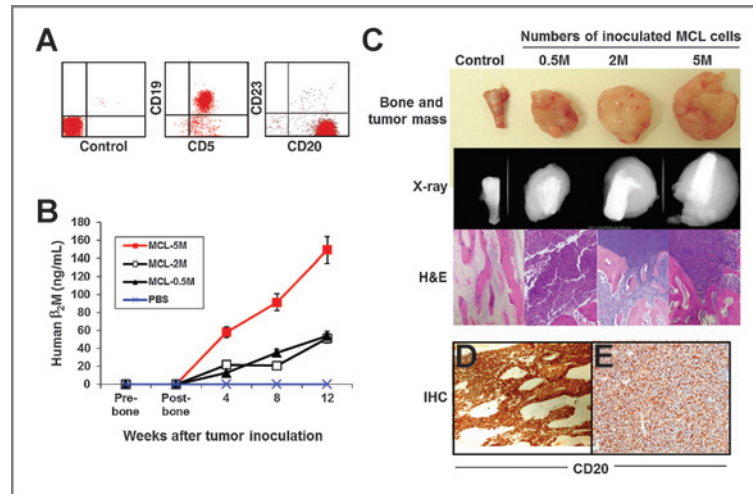


Figure 3.

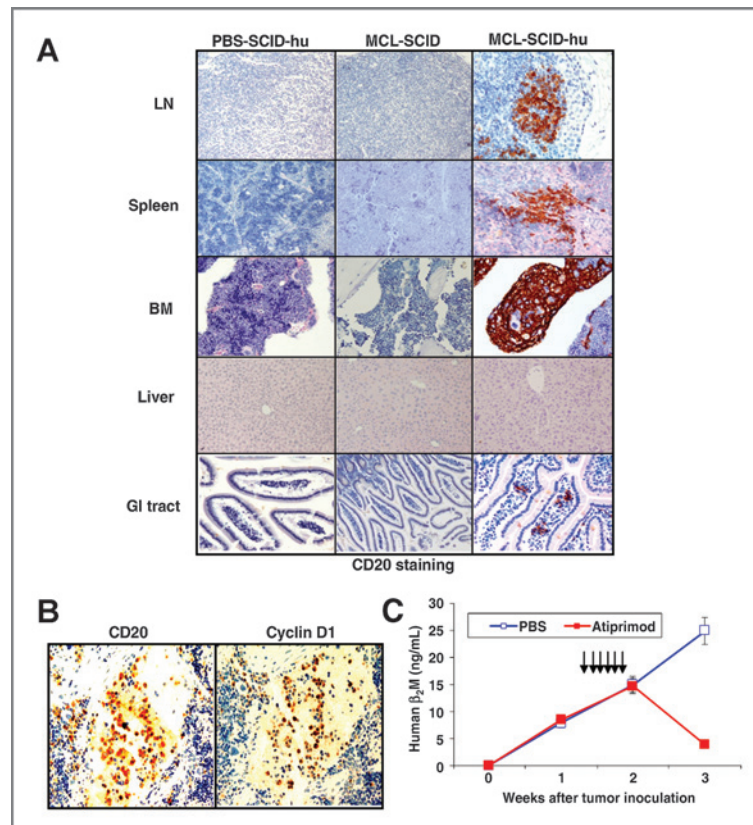


Figure 4.

(spleen/MCL-SCID and liver/MCL-SCID-hu). After reviewing the original pathology data from the immunohistochemistry experiments, the authors have now identified and provided the correct images, which are included in the revised versions of Figs. 3 and 4. The conclusions set forth in the article remain unchanged. The authors regret this error.

Reference

1. Wang M, Zhang L, Han X, Yang J, Qian J, Hong S, et al. A severe combined immunodeficient–hu *in vivo* mouse model of human primary mantle cell lymphoma. *Clin Cancer Res* 2008;14:2154–60.

Published online October 1, 2014.

doi: 10.1158/1078-0432.CCR-14-1308

©2014 American Association for Cancer Research.

Clinical Cancer Research

Correction: A Severe Combined Immunodeficient–hu *In Vivo* Mouse Model of Human Primary Mantle Cell Lymphoma

Clin Cancer Res 2014;20:5142-5143.

Updated version Access the most recent version of this article at:
<http://clincancerres.aacrjournals.org/content/20/19/5142>

Cited articles This article cites 1 articles, 1 of which you can access for free at:
<http://clincancerres.aacrjournals.org/content/20/19/5142.full#ref-list-1>

E-mail alerts [Sign up to receive free email-alerts](#) related to this article or journal.

Reprints and Subscriptions To order reprints of this article or to subscribe to the journal, contact the AACR Publications Department at pubs@aacr.org.

Permissions To request permission to re-use all or part of this article, use this link
<http://clincancerres.aacrjournals.org/content/20/19/5142>.
Click on "Request Permissions" which will take you to the Copyright Clearance Center's (CCC) Rightslink site.