

Highlights of This Issue 273

SPECIAL FEATURES

CCR Translations

- 275** Stressing the Development of Small Molecules Targeting HSP90
Len Neckers and Jane B. Trepel
See related article, p. 445
- 278** Pertuzumab Protects the Achilles' Heel of Trastuzumab—Emtansine
William R. Gwin and Neil L. Spector
See related article, p. 456

CCR Perspectives in Drug Approval

- 281** Predictive Value of Phase I Trials for Safety in Later Trials and Final Approved Dose: Analysis of 61 Approved Cancer Drugs
Denis L. Jardim, Kenneth R. Hess, Patricia LoRusso, Razelle Kurzrock, and David S. Hong

Molecular Pathways

- 289** Molecular Pathways: Targeting Inhibitor of Apoptosis Proteins in Cancer—From Molecular Mechanism to Therapeutic Application
 Simone Fulda
- 296** Molecular Pathways: Transcription Factories and Chromosomal Translocations
Cameron S. Osborne

Reviews

- 301** “Quitting Smoking Will Benefit Your Health”: The Evolution of Clinician Messaging to Encourage Tobacco Cessation
Benjamin A. Toll, Alana M. Rojewski, Lindsay R. Duncan, Amy E. Latimer-Cheung, Lisa M. Fucito, Julie L. Boyer, Stephanie S. O'Malley, Peter Salovey, and Roy S. Herbst
- 310** Deep Molecular Response in Chronic Myeloid Leukemia: The New Goal of Therapy?
François-Xavier Mahon and Gabriel Etienne

HUMAN CANCER BIOLOGY

- 323** IgG-Switched CLL Has a Distinct Immunogenetic Signature from the Common MD Variant: Ontogenetic Implications
Anna Vardi, Andreas Agathangelidis, Lesley-Ann Sutton, Maria Chatzouli, Lydia Scarfò, Larry Mansouri, Vassiliki Douka, Achilles Anagnostopoulos, Nikos Darzentas, Richard Rosenquist, Paolo Ghia, Chrysoula Belessi, and Kostas Stamatopoulos
- 331** Tumor-Reactive CD8⁺ T Cells in Metastatic Gastrointestinal Cancer Refractory to Chemotherapy
Simon Turcotte, Alena Gros, Eric Tran, Chyi-Chia R. Lee, John R. Wunderlich, Paul F. Robbins, and Steven A. Rosenberg
- 344** Altered Microenvironment Promotes Progression of Preinvasive Breast Cancer: Myoepithelial Expression of $\alpha v \beta 6$ Integrin in DCIS Identifies High-risk Patients and Predicts Recurrence
Michael D. Allen, Gareth J. Thomas, Sarah Clark, Marwa M. Dawoud, Sabarinath Vallath, Sarah J. Payne, Jennifer J. Gomm, Sally A. Dreger, Sarah Dickinson, Dylan R. Edwards, Caroline J. Pennington, Ivana Sestak, Jack Cuzick, John F. Marshall, Ian R. Hart, and J. Louise Jones
- 358** The Activation of the WNT Signaling Pathway Is a Hallmark in Neurofibromatosis Type 1 Tumorigenesis
Armelle Luscan, Ghjuvan'Ghjacomu Shackleford, Julien Masliah-Planchon, Ingrid Laurendeau, Nicolas Ortonne, Jennifer Varin, François Lallemand, Karen Leroy, Valérie Dumaine, Mikael Hivelin, Didier Borderie, Thomas De Raedt, Laurence Valeyrie-Allanore, Frédérique Larousserie, Benoît Terris, Laurent Lantieri, Michel Vidaud, Dominique Vidaud, Pierre Wolkenstein, Béatrice Parfait, Ivan Bièche, Charbel Massaad, and Eric Pasmant
- 372** Oncogenic Function of SCCRO5/DCUN1D5 Requires Its Neddylaton E3 Activity and Nuclear Localization
Claire C. Bommeljé, Viola B. Weeda, Guochang Huang, Kushyup Shah, Sarina Bains, Elizabeth Buss, Manish Shaha, Mithat Gönen, Ronald Ghossein, Suresh Y. Ramanathan, and Bhuvanesh Singh

Table of Contents

CANCER THERAPY: PRECLINICAL

- 382** Integrative Genomic Analysis of Temozolomide Resistance in Diffuse Large B-Cell Lymphoma
Violetta V. Leshchenko, Pei-Yu Kuo, Zewei Jiang, Venu K. Thirukonda, and Samir Parekh
- 393** Antitumoral Activity of Lenalidomide in *In Vitro* and *In Vivo* Models of Mantle Cell Lymphoma Involves the Destabilization of Cyclin D1/p27^{KIP1} Complexes
Alexandra Moros, Sophie Bustany, Julie Cahu, Ifigènia Saborit-Villarroya, Antonio Martínez, Dolors Colomer, Brigitte Sola, and Gaël Roué
- 404** Proteomic Characterization of Breast Cancer Xenografts Identifies Early and Late Bevacizumab-Induced Responses and Predicts Effective Drug Combinations
Evita M. Lindholm, Marit Krohn, Sergio Iadevaia, Alexandr Kristian, Gordon B. Mills, Gunhild M. Mñlandsmo, and Olav Engebraaten
- 413** Preclinical Activity Profile and Therapeutic Efficacy of the HSP90 Inhibitor Ganetespib in Triple-Negative Breast Cancer
David A. Proia, Chaohua Zhang, Manuel Sequeira, John-Paul Jimenez, Suqin He, Neil Spector, Geoffrey I. Shapiro, Sara Tolaney, Masazumi Nagai, Jaime Acquaviva, Donald L. Smith, Jim Sang, Richard C. Bates, and Iman El-Hariry

IMAGING, DIAGNOSIS, PROGNOSIS

- 425** Prognostic Relevance of Circulating Tumor Cells in Blood and Disseminated Tumor Cells in Bone Marrow of Patients with Squamous Cell Carcinoma of the Oral Cavity
Alexander Gröbe, Marco Blessmann, Henning Hanken, Reinhard E. Friedrich, Gerhard Schön, Johannes Wikner, Katharina E. Effenberger, Lan Kluwe, Max Heiland, Klaus Pantel, and Sabine Riethdorf
- 434** Tumor-Infiltrating Lymphocytes Expressing the Tissue Resident Memory Marker CD103 Are Associated with Increased Survival in High-Grade Serous Ovarian Cancer
John R. Webb, Katy Milne, Peter Watson, Ronald J. deLeeuw, and Brad H. Nelson

CANCER THERAPY: CLINICAL

- 445** A Phase 1, Dose-Escalation, Pharmacokinetic and Pharmacodynamic Study of BIIB021 Administered Orally in Patients with Advanced Solid Tumors
Muhammad Wasif Saif, Chris Takimoto, Monica Mita, Udai Banerji, Nicole Lamanna, Januario Castro, Susan O'Brien, Christopher Stogard, and Daniel Von Hoff
See related article, p. 275
- 456** Dual Targeting of HER2-Positive Cancer with Trastuzumab Emtansine and Pertuzumab: Critical Role for Neuregulin Blockade in Antitumor Response to Combination Therapy
Gail D. Lewis Phillips, Carter T. Fields, Guangmin Li, Donald Dowbenko, Gabriele Schaefer, Kathy Miller, Fabrice Andre, Howard A. Burris III, Kathy S. Albain, Nadia Harbeck, Veronique Dieras, Diana Crivellari, Liang Fang, Ellie Guardino, Steven R. Olsen, Lisa M. Crocker, and Mark X. Sliwkowski
See related article, p. 278
- 469** The High-Affinity CXCR4 Antagonist BKT140 is Safe and Induces a Robust Mobilization of Human CD34⁺ Cells in Patients with Multiple Myeloma
Amnon Peled, Michal Abraham, Irit Avivi, Jacob M. Rowe, Katia Beider, Hanna Wald, Lena Tiomkin, Lena Ribakovsky, Yossi Riback, Yaron Ramati, Sigal Aviel, Eithan Galun, Howard Laurence Shaw, Orly Eizenberg, Izhar Hardan, Avichai Shimoni, and Arnon Nagler
- 480** Safety, Pharmacokinetics, Pharmacodynamics, and Antitumor Activity of Dalantercept, an Activin Receptor-like Kinase-1 Ligand Trap, in Patients with Advanced Cancer
Johanna C. Bendell, Michael S. Gordon, Herbert I. Hurwitz, Suzanne F. Jones, David S. Mendelson, Gerard C. Globe, Neeraj Agarwal, Carolyn H. Condon, Dawn Wilson, Amelia E. Pearsall, Yijun Yang, Ty McClure, Kenneth M. Attie, Matthew L. Sherman, and Sunil Sharma
- 490** Phase II Study of the Oral MEK Inhibitor Selumetinib in Advanced Acute Myelogenous Leukemia: A University of Chicago Phase II Consortium Trial
Nitin Jain, Emily Curran, Neil M. Iyengar, Ernesto Diaz-Flores, Rangesh Kunnavakkam, Leslie Popplewell, Mark H. Kirschbaum, Theodore Karrison, Harry P. Erba, Margaret Green, Xavier Poire, Greg Koval, Kevin Shannon, Poluru L. Reddy, Loren Joseph, Ehab L. Atallah, Philip Dy, Sachdev P. Thomas, Scott E. Smith, L. Austin Doyle, Walter M. Stadler, Richard A. Larson, Wendy Stock, and Olatoyosi Odenike



Table of Contents

- 499** **Neoadjuvant Imatinib in Advanced Primary or Locally Recurrent Dermatofibrosarcoma Protuberans: A Multicenter Phase II DeCOG Trial with Long-term Follow-up**
Selma Ugurel, Thomas Mentzel, Jochen Utikal, Peter Helmbold, Peter Mohr, Claudia Pföhler, Meinhard Schiller, Axel Hauschild, Rüdiger Hein, Eckhardt Kämpgen, Ivonne Kellner, Martin Leverkus, Jürgen C. Becker, Philip Ströbel, and Dirk Schadendorf

PREDICTIVE BIOMARKERS AND PERSONALIZED MEDICINE

- 511** **Research-Based PAM50 Subtype Predictor Identifies Higher Responses and Improved Survival Outcomes in HER2-Positive Breast Cancer in the NOAH Study**
Aleix Prat, Giampaolo Bianchini, Marlene Thomas, Anton Belousov, Maggie C.U. Cheang, Astrid Koehler, Patricia Gómez, Vladimir Semiglazov, Wolfgang Eiermann, Sergei Tjulandin, Mikhail Byakhov, Begoña Bermejo, Milvia Zambetti, Federico Vazquez, Luca Gianni, and José Baselga

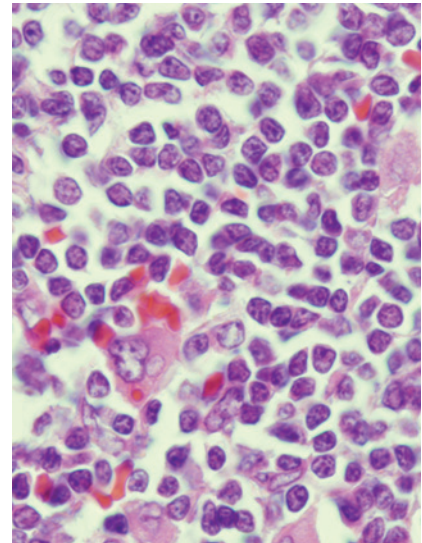
 **AC icon indicates Author Choice**

 **CME icon indicates that this article is available for continue medical education credit at <http://cme.aacrjournals.org>**

For more information please visit www.aacrjournals.org

ABOUT THE COVER

The cover shows a section of a lymph node biopsy from a patient with mantle cell lymphoma. Hematoxylin and eosin staining shows typical monomorphous small-to-medium-sized lymphoid cells with irregular nuclei. For details, see the article by Moros and colleagues on page 393 of this issue.



Clinical Cancer Research

20 (2)

Clin Cancer Res 2014;20:273-521.

Updated version Access the most recent version of this article at:
<http://clincancerres.aacrjournals.org/content/20/2>

E-mail alerts [Sign up to receive free email-alerts](#) related to this article or journal.

Reprints and Subscriptions To order reprints of this article or to subscribe to the journal, contact the AACR Publications Department at pubs@aacr.org.

Permissions To request permission to re-use all or part of this article, use this link <http://clincancerres.aacrjournals.org/content/20/2>. Click on "Request Permissions" which will take you to the Copyright Clearance Center's (CCC) Rightslink site.