


Highlights of This Issue 777**SPECIAL FEATURES****CCR Translations**

- 779** Are Short Telomeres Hallmarks of Cancer Recurrence?
Jerry W. Shay
See related article, p. 904

CCR New Strategies

- 782** New Strategies for Triple-Negative Breast Cancer—Deciphering the Heterogeneity
 Ingrid A. Mayer, Vandana G. Abramson, Brian D. Lehmann, and Jennifer A. Pietenpol

Molecular Pathways


- 791** Molecular Pathways: Targeting Resistance in the Androgen Receptor for Therapeutic Benefit
Elahe A. Mostaghel, Stephen R. Plymate, and Bruce Montgomery
- 799** Molecular Pathways: Gene–Environment Interactions Regulating Dietary Fiber Induction of Proliferation and Apoptosis via Butyrate for Cancer Prevention
Scott J. Bultman

Review

- 804** Biologic Frontiers in Multiple Myeloma: From Biomarker Identification to Clinical Practice
Ola Landgren and Gareth J. Morgan

HUMAN CANCER BIOLOGY

- 814** DNA Methyltransferase Inhibition Reverses Epigenetically Embedded Phenotypes in Lung Cancer Preferentially Affecting Polycomb Target Genes
Antje Hascher, Ann-Kristin Haase, Katja Hebestreit, Christian Rohde, Hans-Ulrich Klein, Maria Rius, Dominik Jungen, Anika Witten, Monika Stoll, Isabell Schulze, Seishi Ogawa, Rainer Wiewrodt, Lara Tickenbrock, Wolfgang E. Berdel, Martin Dugas, Nils H. Thoennissen, and Carsten Müller-Tidow

- 827** *PID1 (NYGGF4)*, a New Growth-Inhibitory Gene in Embryonal Brain Tumors and Gliomas


Anat Erdreich-Epstein, Nathan Robison, Xiuhai Ren, Hong Zhou, Jingying Xu, Tom B. Davidson, Mathew Schur, Floyd H. Gilles, Lingyun Ji, Jemily Malvar, Gregory M. Shackleford, Ashley S. Margol, Mark D. Krieger, Alexander R. Judkins, David T.W. Jones, Stefan M. Pfister, Marcel Kool, Richard Sposto, and Shahab Asgharazadeh

- 837** Colon Cancer Cells Escape 5FU Chemotherapy-Induced Cell Death by Entering Stemness and Quiescence Associated with the c-Yes/YAP Axis
Yasmine Touil, Wassila Igoudjil, Matthieu Corvaisier, Anne-Frédérique Dessein, Jérôme Vandomme, Didier Monté, Laurence Stechly, Nicolas Skrypek, Carole Langlois, Georges Gard, Guillaume Millet, Emmanuelle Leteurtre, Patrick Dumont, Stéphanie Truant, François-René Pruvot, Mohamed Hebbar, Fan Fan, Lee M. Ellis, Pierre Formstecher, Isabelle Van Seuningen, Christian Gespach, Renata Polakowska, and Guillemette Huet

- 847** HIF-1 α of Bone Marrow Endothelial Cells Implies Relapse and Drug Resistance in Patients with Multiple Myeloma and May Act as a Therapeutic Target
Roberto Ria, Ivana Catacchio, Simona Berardi, Annunziata De Luisi, Antonella Caivano, Claudia Piccoli, Vitalba Ruggieri, Maria Antonia Frassanito, Domenico Ribatti, Beatrice Nico, Tiziana Annesse, Simona Ruggieri, Attilio Guarini, Carla Minoia, Paolo Ditunno, Emanuele Angelucci, Daniele Derudas, Michele Moschetta, Franco Dammacco, and Angelo Vacca

- 859** Colonization of the Human Gut by *E. coli* and Colorectal Cancer Risk

Mathilde Bonnet, Emmanuel Buc, Pierre Sauvanet, Claude Darcha, Damien Dubois, Bruno Pereira, Pierre Déchelotte, Richard Bonnet, Denis Pezet, and Arlette Darfeuille-Michaud

- 868** Clusterin Is a Gene-Specific Target of microRNA-21 in Head and Neck Squamous Cell Carcinoma

Wojciech Mydlarz, Mamoru Uemura, Sun Ahn, Patrick Hennessey, Steven Chang, Semra Demokan, Wenye Sun, Chunbo Shao, Justin Bishop, Julie Krosting, Elizabeth Mambo, William Westra, Patrick Ha, David Sidransky, and Joseph Califano

Table of Contents

- 878** Integrated MicroRNA Network Analyses Identify a Poor-Prognosis Subtype of Gastric Cancer Characterized by the miR-200 Family
Fengju Song, Da Yang, Ben Liu, Yan Guo, Hong Zheng, Lian Li, Tao Wang, Jinpu Yu, Yanrui Zhao, Ruifang Niu, Han Liang, Hans Winkler, Wei Zhang, Xishan Hao, and Kexin Chen
- 890** Rb Loss Is Characteristic of Prostatic Small Cell Neuroendocrine Carcinoma
Hsueh-Li Tan, Akshay Sood, Hameed A. Rahimi, Wenle Wang, Nilesh Gupta, Jessica Hicks, Stacy Mosier, Christopher D. Gocke, Jonathan I. Epstein, George J. Netto, Wennuan Liu, William B. Isaacs, Angelo M. De Marzo, and Tamara L. Lotan
- 904** Telomere Content and Risk of Second Malignant Neoplasm in Survivors of Childhood Cancer: A Report from the Childhood Cancer Survivor Study
Maria M. Gramatges, Qi Liu, Yutaka Yasui, M. Fatih Okcu, Joseph P. Neglia, Louise C. Strong, Gregory T. Armstrong, Leslie L. Robison, and Smita Bhatia
See related article, p. 779
- CANCER THERAPY: PRECLINICAL**
- 912** BET Bromodomain Inhibition of MYC-Amplified Medulloblastoma
Pratiti Bandopadhyay, Guillaume Bergthold, Brian Nguyen, Simone Schubert, Sharareh Gholamin, Yujie Tang, Sara Bolin, Steven E. Schumacher, Rhamy Zeid, Sabran Masoud, Furong Yu, Nujsaubnusi Vue, William J. Gibson, Brenton R. Paoletta, Siddhartha S. Mitra, Samuel H. Cheshier, Jun Qi, Kun-Wei Liu, Robert Wechsler-Reya, William A. Weiss, Fredrik J. Swartling, Mark W. Kieran, James E. Bradner, Rameen Beroukhim, and Yoon-Jae Cho
- 926** Activity of the Monocarboxylate Transporter 1 Inhibitor AZD3965 in Small Cell Lung Cancer
Radosław Polański, Cassandra L. Hodgkinson, Alberto Fusi, Daisuke Nonaka, Lynsey Priest, Paul Kelly, Francesca Trapani, Paul W. Bishop, Anne White, Susan E. Critchlow, Paul D. Smith, Fiona Blackhall, Caroline Dive, and Christopher J. Morrow
- 938** Targeting Epithelial-to-Mesenchymal Transition with Met Inhibitors Reverts Chemoresistance in Small Cell Lung Cancer
Israel Cañadas, Federico Rojo, Álvaro Taus, Oriol Arpí, Montserrat Arumí-Uría, Lara Pijuan, Silvia Menéndez, Sandra Zazo, Manuel Dómine, Marta Salido, Sergi Mojal, Antonio García de Herreros, Ana Rovira, Joan Albanell, and Edurne Arriola
- 951** Inhibition of Protein Kinase C/Twist1 Signaling Augments Anticancer Effects of Androgen Deprivation and Enzalutamide in Prostate Cancer
Masaki Shiota, Akira Yokomizo, Ario Takeuchi, Kenjiro Imada, Eiji Kashiwagi, YooHyun Song, Junichi Inokuchi, Katsunori Tatsugami, Takeshi Uchiumi, and Seiji Naito
- 962** T Lymphocytes Redirected against the Chondroitin Sulfate Proteoglycan-4 Control the Growth of Multiple Solid Tumors both *In Vitro* and *In Vivo*
Claudia Geldres, Barbara Savoldo, Valentina Hoyos, Ignazio Caruana, Ming Zhang, Eric Yvon, Michele Del Vecchio, Chad J. Creighton, Michael Ittmann, Soldano Ferrone, and Gianpietro Dotti
- 972** EGFRvIII mCAR-Modified T-Cell Therapy Cures Mice with Established Intracerebral Glioma and Generates Host Immunity against Tumor-Antigen Loss
John H. Sampson, Bryan D. Choi, Luis Sanchez-Perez, Carter M. Suryadevara, David J. Snyder, Catherine T. Flores, Robert J. Schmittling, Smita K. Nair, Elizabeth A. Reap, Pamela K. Norberg, James E. Herndon II, Chien-Tsun Kuan, Richard A. Morgan, Steven A. Rosenberg, and Laura A. Johnson
- 985** Cellular Uptake of Imatinib into Leukemic Cells Is Independent of Human Organic Cation Transporter 1 (OCT1)
Anne T. Nies, Elke Schaeffeler, Heiko van der Kuip, Ingolf Cascorbi, Oliver Bruhn, Michael Kneba, Christiane Pott, Ute Hofmann, Christopher Volk, Shuiying Hu, Sharyn D. Baker, Alex Sparreboom, Peter Ruth, Hermann Koeppell, and Matthias Schwab
- 995** Synergistic Antitumor Activity of Cetuximab and Namitecan in Human Squamous Cell Carcinoma Models Relies on Cooperative Inhibition of EGFR Expression and Depends on High EGFR Gene Copy Number
Michelangelo De Cesare, Calogero Lauricella, Silvio Marco Veronese, Denis Cominetti, Claudio Pisano, Franco Zunino, Nadia Zaffaroni, and Valentina Zuco

Table of Contents

IMAGING, DIAGNOSIS, PROGNOSIS

- 1007** Distinction between Asymptomatic Monoclonal B-cell Lymphocytosis with Cyclin D1 Overexpression and Mantle Cell Lymphoma: From Molecular Profiling to Flow Cytometry
Blanca Espinet, Ana Ferrer, Beatriz Bellosillo, Lara Nonell, Antonio Salar, Concepción Fernández-Rodríguez, Eulàlia Puigdecamet, Javier Gimeno, Mar Garcia-Garcia, Maria Carmen Vela, Elisa Luño, Rosa Collado, José Tomás Navarro, Esmeralda de la Banda, Pau Abrisqueta, Leonor Arenillas, Cristina Serrano, Josep Lloreta, Belén Miñana, Andrea Cerutti, Lourdes Florensa, Alberto Orfao, Ferran Sanz, Francesc Solé, David Dominguez-Sola, and Sergio Serrano
- 1020** Mesothelin Overexpression Is a Marker of Tumor Aggressiveness and Is Associated with Reduced Recurrence-Free and Overall Survival in Early-Stage Lung Adenocarcinoma
Stefan S. Kachala, Adam J. Bograd, Jonathan Villena-Vargas, Kei Suzuki, Elliot L. Servais, Kyuichi Kadota, Joanne Chou, Camelia S. Sima, Eva Vertes, Valerie W. Rusch, William D. Travis, Michel Sadelain, and Prasad S. Adusumilli

CANCER THERAPY: CLINICAL

- 1029** Complement Activation and Intraventricular Rituximab Distribution in Recurrent Central Nervous System Lymphoma
Cigall Kadoch, Jing Li, Valerie S. Wong, Lingjing Chen, Soonmee Cha, Pamela Munster, Clifford A. Lowell, Marc A. Shuman, and James L. Rubenstein

PREDICTIVE BIOMARKERS AND PERSONALIZED MEDICINE

- 1042** Overexpression of the Circadian Clock Gene *Bmal1* Increases Sensitivity to Oxaliplatin in Colorectal Cancer
Zhao-lei Zeng, Hui-yan Luo, Jing Yang, Wen-jing Wu, Dong-liang Chen, Peng Huang, and Rui-hua Xu

LETTERS TO THE EDITOR

- 1053** GA201: A Novel Humanized and Glycoengineered Anti-EGFR Antibody—Letter
Helmout Modjtahedi and Suzanne Eccles
- 1055** GA201: A Novel Humanized and Glycoengineered Anti-EGFR Antibody—Response
Christian A. Gerdes and Pablo Umaña
- 1056** Biomarkers and Response to Bevacizumab—Letter
Chiara Cremolini, Fotios Loupakis, Guido Bocci, and Alfredo Falcone
- 1058** Biomarkers and Response to Bevacizumab—Response
Fiona Collinson, Michelle Hutchinson, Rachel A. Craven, David A. Cairns, Zougman Alexandre, Tobias C. Wind, Narinder Gahir, Michael P. Messenger, Sharon Jackson, Douglas Thompson, Cybil Adusei, Jonathan Ledermann, Geoffrey Hall, Gordon C. Jayson, Peter J. Selby, and Rosamonde E. Banks

 AC icon indicates Author Choice

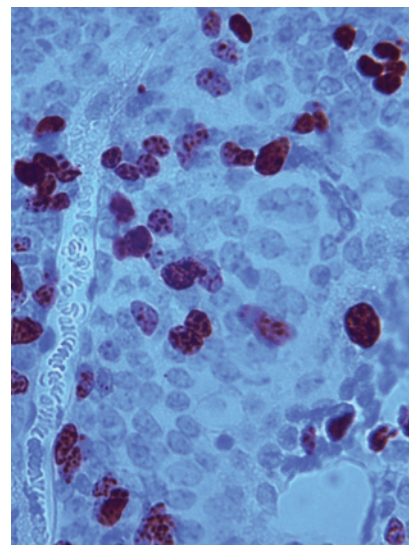
 CME icon indicates that this article is available for continuing medical education credit at <http://cme.aacrjournals.org>

For more information please visit www.aacrjournals.org

Table of Contents

ABOUT THE COVER

The cover shows a section of an intracerebellar xenograft of medulloblastoma derived from a patient with *MYC*-amplified medulloblastoma. Immunohistochemical staining shows reduced expression of the Ki-67 proliferation marker following treatment with the BET-bromodomain inhibitor JQ1. For details, see the article by Bandopadhyay and colleagues on page 912 of this issue



Clinical Cancer Research

20 (4)

Clin Cancer Res 2014;20:777-1058.

Updated version Access the most recent version of this article at:
<http://clincancerres.aacrjournals.org/content/20/4>

E-mail alerts [Sign up to receive free email-alerts](#) related to this article or journal.

Reprints and Subscriptions To order reprints of this article or to subscribe to the journal, contact the AACR Publications Department at pubs@aacr.org.

Permissions To request permission to re-use all or part of this article, use this link <http://clincancerres.aacrjournals.org/content/20/4>.
Click on "Request Permissions" which will take you to the Copyright Clearance Center's (CCC) Rightslink site.