

Highlights of This Issue 3361

SPECIAL FEATURES

CCR 20th Anniversary Commentary

- 3363** CCR 20th Anniversary Commentary: A Genetic Mechanism of Imatinib Resistance in Gastrointestinal Stromal Tumor—Where Are We a Decade Later?
Cristina R. Antonescu and Ronald P. DeMatteo

CCR Translations

- 3366** Stroma, Stroma Everywhere (Far More Than You Think)
Kenneth P. Olive
See related article, p. 3561
- 3369** Obesity, Intrapancreatic Fatty Infiltration, and Pancreatic Cancer
Hua Wang, Anirban Maitra, and Huamin Wang
See related article, p. 3522

CCR Perspectives in Drug Approval

- 3372** FDA Approval Summary: Ramucirumab for Gastric Cancer
Sandra J. Casak, Ibilola Fashoyin-Aje, Steven J. Lemery, Lillian Zhang, Runyan Jin, Hongshan Li, Liang Zhao, Hong Zhao, Hui Zhang, Huanyu Chen, Kun He, Michele Dougherty, Rachel Novak, Sarah Kennett, Sachia Khasar, Whitney Helms, Patricia Keegan, and Richard Pazdur


Molecular Pathways

- 3377** Molecular Pathways: Sensitivity and Resistance to Anti-EGFR Antibodies
Andrea Bertotti and Francesco Sassi

Reviews

- 3384** The Evolution of T-cell Therapies for Solid Malignancies
 Kristen Fousek and Nabil Ahmed
- 3393** Emerging Treatment Paradigms in Radiation Oncology
Quynh-Thu Le, Hiroki Shirato, Amato J. Giaccia, and Albert C. Koong

CANCER THERAPY: CLINICAL

- 3402** Global Transcriptional Changes Following Statin Treatment in Breast Cancer
Olöf Bjarnadóttir, Siker Kimbung, Ida Johansson, Srinivas Veerla, Mats Jönsson, Pär-Ola Bendahl, Dorthe Grabau, Ingrid Hedenfalk, and Signe Borgquist
- 3412** First-in-Human Pharmacokinetic and Pharmacodynamic Study of the Dual m-TORC 1/2 Inhibitor AZD2014
 Bristi Basu, Emma Dean, Martina Puglisi, Alastair Greystoke, Michael Ong, Wendy Burke, Maria Cavallin, Graham Bigley, Christopher Womack, Elizabeth A. Harrington, Stephen Green, Elisabeth Oelmann, Johann S. de Bono, Malcolm Ranson, and Udai Banerji
- 3420** A Phase I/II Trial of BNC105P with Everolimus in Metastatic Renal Cell Carcinoma
Sumanta Pal, Arun Azad, Shailender Bhatia, Harry Drabkin, Brian Costello, John Sarantopoulos, Ravindran Kanesvaran, Richard Lauer, Alexander Starodub, Ralph Hauke, Christopher J. Sweeney, Noah M. Hahn, Guru Sonpavde, Stephen Richey, Timothy Breen, Gabriel Kremmidiotis, Annabell Leske, Elizabeth Doolin, David C. Bibby, Jeremy Simpson, Jose Iglesias, and Thomas Hutson

PERSONALIZED MEDICINE AND IMAGING

- 3428** The Prognostic Impact of CD163-Positive Macrophages in Follicular Lymphoma: A Study from the BC Cancer Agency and the Lymphoma Study Association
Robert Kridel, Luc Xerri, Bénédicte Gelas-Dore, King Tan, Pierre Feugier, Ayesha Vawda, Danielle Canioni, Pedro Farinha, Sami Boussetta, Alden A. Moccia, Pauline Brice, Elizabeth A. Chavez, Alastair H. Kyle, David W. Scott, Ashley D. Sanders, Bettina Fabiani, Graham W. Slack, Andrew I. Minchinton, Corinne Haioun, Joseph M. Connors, Laurie H. Sehn, Christian Steidl, Randy D. Gascoyne, and Gilles Salles
- 3436** A First Step toward Personalized Medicine in Osteosarcoma: Pharmacogenetics as Predictive Marker of Outcome after Chemotherapy-Based Treatment
Melanie M. Hagleitner, Marieke J.H. Coenen, Hans Gelderblom, Remco R. Makkinje, Hanneke I. Vos, Eveline S.J.M. de Bont, Winette T.A. van der Graaf, H.W. Bart Schreuder, Uta Flucke, Frank N. van Leeuwen, Peter M. Hoogerbrugge, Henk-Jan Guchelaar, and Dunja M.W.M. te Loo

Table of Contents

3442 Direct Evidence of Target Inhibition with Anti-VEGF, EGFR, and mTOR Therapies in a Clinical Model of Wound Healing

Jingquan Jia, Andrew E. Dellinger, Eric S. Weiss, Anuradha Bulusu, Christel Rushing, Haiyan Li, Leigh A. Howard, Neal Kaplan, Herbert Pang, Herbert I. Hurwitz, and Andrew B. Nixon

3453 Analyses of 7,635 Patients with Colorectal Cancer Using Independent Training and Validation Cohorts Show That rs9929218 in *CDH1* Is a Prognostic Marker of Survival

Christopher G. Smith, David Fisher, Rebecca Harris, Timothy S. Maughan, Amanda I. Phipps, Susan Richman, Matthew Seymour, Ian Tomlinson, Dan Rosmarin, David Kerr, Andrew T. Chan, Ulrike Peters, Polly A. Newcomb, Shelley Idziaszczyk, Hannah West, Angela Meade, Richard Kaplan, and Jeremy P. Cheadle

CANCER THERAPY: PRECLINICAL

3462 Brain Penetration and Efficacy of Different Mebendazole Polymorphs in a Mouse Brain Tumor Model

Ren-Yuan Bai, Verena Staedtke, Teresia Wanjiku, Michelle A. Rudek, Avadhut Joshi, Gary L. Gallia, and Gregory J. Riggins

BIOLOGY OF HUMAN TUMORS

3471 Cytoplasmic Accumulation of Sequestosome 1 (p62) Is a Predictor of Biochemical Recurrence, Rapid Tumor Cell Proliferation, and Genomic Instability in Prostate Cancer

Christoph Burdelski, Viktor Reischwich, Claudia Hube-Magg, Martina Kluth, Sarah Minner, Christina Koop, Markus Graefen, Hans Heinzer, Maria Christina Tsourlakis, Corinna Wittmer, Hartwig Huland, Ronald Simon, Thorsten Schlomm, Guido Sauter, and Stefan Steurer

3480 An Integrated Molecular Analysis of Lung Adenocarcinomas Identifies Potential Therapeutic Targets among TTF1-Negative Tumors, Including DNA Repair Proteins and Nrf2

Robert J.G. Cardnell, Carmen Behrens, Lixia Diao, YouHong Fan, Ximing Tang, Pan Tong, John D. Minna, Gordon B. Mills, John V. Heymach, Ignacio I. Wistuba, Jing Wang, and Lauren A. Byers

3492 Promoter Methylation of *CDO1* Identifies Clear-Cell Renal Cell Cancer Patients with Poor Survival Outcome

Ivette A.G. Deckers, Leo J. Schouten, Leander Van Neste, Iris J.H. van Vloderp, Patricia M.M.B. Soetekouw, Marcella M.L.L. Baldewijns, Jana Jeschke, Nita Ahuja, James G. Herman, Piet A. van den Brandt, and Manon van Engeland

3501 Clinically Relevant Molecular Subtypes in Leiomyosarcoma



Xiangqian Guo, Vickie Y. Jo, Anne M. Mills, Shirley X. Zhu, Cheng-Han Lee, Inigo Espinosa, Marisa R. Nucci, Sushama Varma, Erna Forgó, Trevor Hastie, Sharon Anderson, Kristen Ganjoo, Andrew H. Beck, Robert B. West, Christopher D. Fletcher, and Matt van de Rijn

3512 Identification of a Three-Biomarker Panel in Urine for Early Detection of Pancreatic Adenocarcinoma

Tomasz P. Radon, Nathalie J. Massat, Richard Jones, Wasfi Alrawashdeh, Laurent Dumartin, Darren Ennis, Stephen W. Duffy, Hemant M. Kocher, Stephen P. Pereira, Luisa Guarner (posthumous), Cristiane Murta-Nascimento, Francisco X. Real, Núria Malats, John Neoptolemos, Eithne Costello, William Greenhalf, Nick R. Lemoine, and Tatjana Crnogorac-Jurcevic

3522 Obesity and Fatty Pancreatic Infiltration Are Risk Factors for Pancreatic Precancerous Lesions (PanIN)

Vinciane Rebours, Sébastien Gaujoux, Gaspard d'Assignies, Alain Sauvanet, Philippe Ruzsniowski, Philippe Lévy, Valérie Paradis, Pierre Bedossa, and Anne Couvelard

See related commentary, p. 3369

3529 Glycodelin: A New Biomarker with Immunomodulatory Functions in Non-Small Cell Lung Cancer

Marc A. Schneider, Martin Granzow, Arne Warth, Philipp A. Schnabel, Michael Thomas, Felix J.F. Herth, Hendrik Dienemann, Thomas Muley, and Michael Meister

3541 Biological Activities of RUNX1 Mutants Predict Secondary Acute Leukemia Transformation from Chronic Myelomonocytic Leukemia and Myelodysplastic Syndromes

Shu-Chun Tsai, Lee-Yung Shih, Sung-Tzu Liang, Ying-Jung Huang, Ming-Chung Kuo, Chein-Fuang Huang, Yu-Shu Shih, Tung-Huei Lin, Ming-Chun Chiu, and Der-Cherng Liang

3552 Ultra-Sensitive Detection of the Pretreatment EGFR T790M Mutation in Non-Small Cell Lung Cancer Patients with an EGFR-Activating Mutation Using Droplet Digital PCR

Masaru Watanabe, Tomoya Kawaguchi, Shun-ichi Isa, Masahiko Ando, Akihiro Tamiya, Akihito Kubo, Hideo Saka, Sadanori Takeo, Hirofumi Adachi, Tsutomu Tagawa, Seiichi Kakegawa, Motohiro Yamashita, Kazuhiko Kataoka, Yukito Ichinose, Yukiyasu Takeuchi, Kazuhiro Sakamoto, Akihide Matsumura, and Yasuhiro Koh

Table of Contents

3561 Desmoplasia in Primary Tumors and Metastatic Lesions of Pancreatic Cancer

Clifford J. Whatcott, Caroline H. Diep, Ping Jiang, Aprill Watanabe, Janine LoBello, Chao Sima, Galen Hostetter, H. Michael Shepard, Daniel D. Von Hoff, and Haiyong Han
See related commentary, p. 3366

LETTERS TO THE EDITOR

3569 Detecting Plasma Tumor DNA in Early-Stage Breast Cancer—Letter

Annette R. Kodahl, Niels Pallisgaard, Anne Marie B. Jylling, Søren Cold, Ann S. Knoop, and Henrik J. Ditzel

3570 Detecting Plasma Tumor DNA in Early-Stage Breast Cancer—Reply

Julia A. Beaver and Ben Ho Park

CORRECTIONS

3571 Correction: Tyrosine Phosphoproteomics Identifies Both Codrivers and Cotargeting Strategies for T790M-Related EGFR-TKI Resistance in Non–Small Cell Lung Cancer

3572 Correction: TMEFF2 Deregulation Contributes to Gastric Carcinogenesis and Indicates Poor Survival Outcome

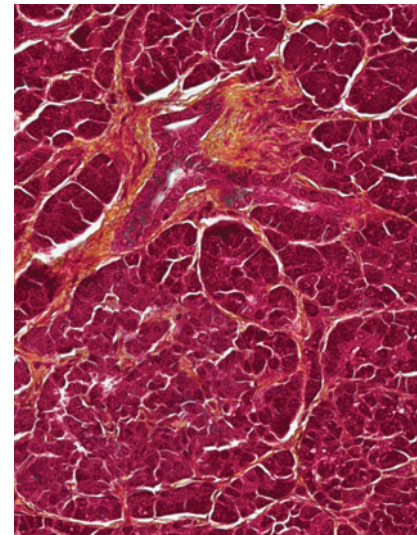
 AC icon indicates Author Choice

 CME icon indicates that this article is available for continuing medical education credit at <http://cme.aacrjournals.org>

For more information please visit www.aacrjournals.org

ABOUT THE COVER

The cover shows pentachrome staining of adjacent normal pancreatic tissue excised from a patient with pancreatic ductal adenocarcinoma. Pentachrome staining techniques show low levels of collagen, which is indicated by the yellow, in this adjacent normal section. For details, see the article by Whatcott and colleagues on page 3561 of this issue.



Clinical Cancer Research

21 (15)

Clin Cancer Res 2015;21:3361-3572.

Updated version Access the most recent version of this article at:
<http://clincancerres.aacrjournals.org/content/21/15>

E-mail alerts [Sign up to receive free email-alerts](#) related to this article or journal.

Reprints and Subscriptions To order reprints of this article or to subscribe to the journal, contact the AACR Publications Department at pubs@aacr.org.

Permissions To request permission to re-use all or part of this article, use this link <http://clincancerres.aacrjournals.org/content/21/15>.
Click on "Request Permissions" which will take you to the Copyright Clearance Center's (CCC) Rightslink site.