

Correction: TMEFF2 Deregulation Contributes to Gastric Carcinogenesis and Indicates Poor Survival Outcome

In this article (Clin Cancer Res 2014;20:4689–704), which was published in the September 1, 2014, issue of *Clinical Cancer Research* (1), the authors provided incorrect versions of Figs. 5A, 5B, 6C, and 6E in the main text and Supplementary Figs. S1 to S6, which were published with the issue. The corrected main text figures are below; the corrected supplementary figures are posted online. In addition, a callout in the final paragraph of the article that reads "Supplementary Fig. S6G" should read "Fig. 6G." The results and conclusions put forth in the article remain unchanged. The authors regret this error.

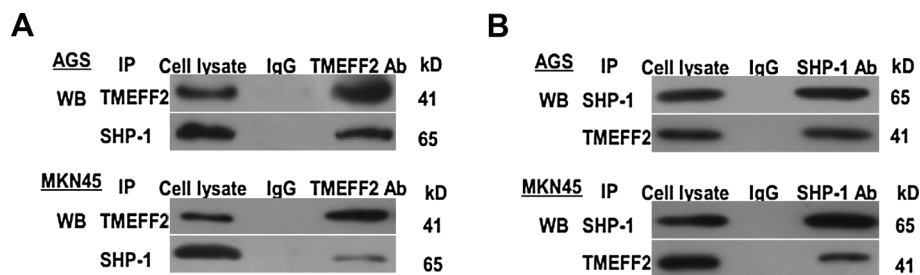


Figure 5.

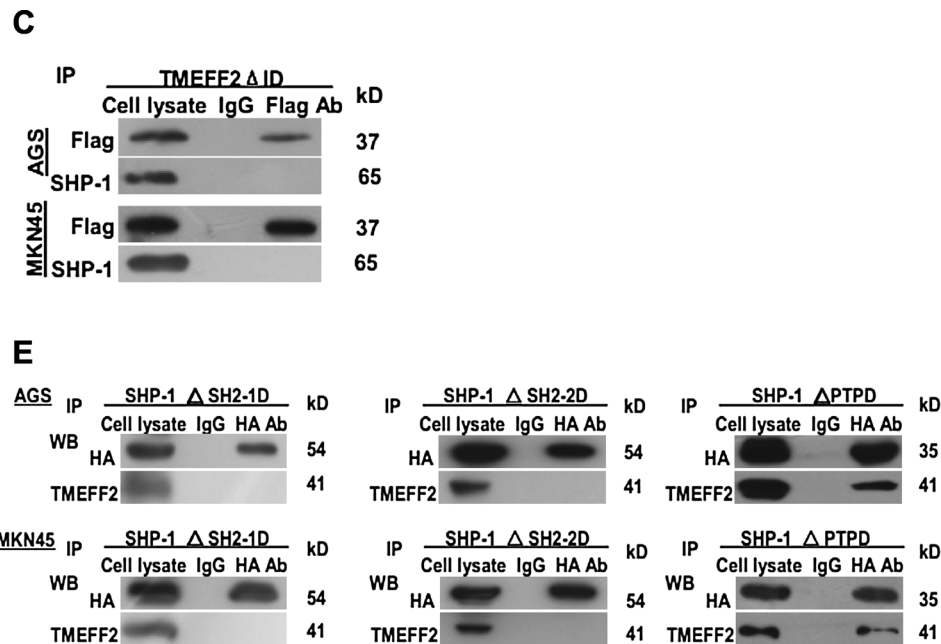


Figure 6.

Reference

- Sun T, Du W, Xiong H, Yu Y, Weng Y, Ren L, et al. TMEFF2 deregulation contributes to gastric carcinogenesis and indicates poor survival outcome. Clin Cancer Res 2014;20:4689–704.

Published online August 3, 2015.
doi: 10.1158/1078-0432.CCR-15-1270
©2015 American Association for Cancer Research.

Clinical Cancer Research

Correction: TMEFF2 Deregulation Contributes to Gastric Carcinogenesis and Indicates Poor Survival Outcome

Clin Cancer Res 2015;21:3572.

Updated version Access the most recent version of this article at:
<http://clincancerres.aacrjournals.org/content/21/15/3572>

Cited articles This article cites 1 articles, 1 of which you can access for free at:
<http://clincancerres.aacrjournals.org/content/21/15/3572.full#ref-list-1>

E-mail alerts [Sign up to receive free email-alerts](#) related to this article or journal.

Reprints and Subscriptions To order reprints of this article or to subscribe to the journal, contact the AACR Publications Department at pubs@aacr.org.

Permissions To request permission to re-use all or part of this article, use this link <http://clincancerres.aacrjournals.org/content/21/15/3572>. Click on "Request Permissions" which will take you to the Copyright Clearance Center's (CCC) Rightslink site.