

September 1, 2015 • Volume 21 • Number 17

Highlights of This Issue 3811**SPECIAL FEATURES****CCR 20th Anniversary Commentary**

- 3813** CCR 20th Anniversary Commentary: Triple-Negative Breast Cancer in 2015—Still in the Ballpark
Steven A. Narod, Rebecca A. Dent, and William D. Foulkes

CCR Translations

- 3815** Moving Beyond "Lumpology": PET/CT Imaging of Pheochromocytoma and Paraganglioma
Michael S. Hofman and Rodney J. Hicks
See related article, p. 3888
- 3818** Emerging Agents and New Mutations in EGFR-Mutant Lung Cancer
Deborah Ayeni, Katerina Politi, and Sarah B. Goldberg
See related articles, p. 3913 and p. 3924

CCR New Strategies

- 3821** New Strategies in Human Papillomavirus-Related Oropharynx Cancer: Effecting Advances in Treatment for a Growing Epidemic
 Erminia Massarelli, Renata Ferrarotto, and Bonnie S. Glisson

CCR Drug Updates

- 3829** Development of Olaparib for BRCA-Deficient Recurrent Epithelial Ovarian Cancer
Krishnansu S. Tewari, Ramez N. Eskander, and Bradley J. Monk

Molecular Pathways

- 3836** Molecular Pathways: Is AMPK a Friend or a Foe in Cancer?
D. Grahame Hardie

Reviews

- 3841** Using CellMiner 1.6 for Systems Pharmacology and Genomic Analysis of the NCI-60
William C. Reinhold, Margot Sunshine, Sudhir Varma, James H. Doroshov, and Yves Pommier

- 3853** Refining the Mantle Cell Lymphoma Paradigm: Impact of Novel Therapies on Current Practice
 Irit Avivi and Andre Goy

Cancer Therapy: Clinical

- 3862** A Randomized Phase II Trial of Sipuleucel-T with Concurrent versus Sequential Abiraterone Acetate plus Prednisone in Metastatic Castration-Resistant Prostate Cancer
 Eric J. Small, Raymond S. Lance, Thomas A. Gardner, Lawrence I. Karsh, Lawrence Fong, Candice McCoy, Todd DeVries, Nadeem A. Sheikh, Debraj GuhaThakurta, Nancy Chang, Charles H. Redfern, and Neal D. Shore
- 3870** First-in-Human Trial of a Novel Anti-Trop-2 Antibody-SN-38 Conjugate, Sacituzumab Govitecan, for the Treatment of Diverse Metastatic Solid Tumors
Alexander N. Starodub, Allyson J. Ocean, Manish A. Shah, Michael J. Guarino, Vincent J. Picozzi Jr, Linda T. Vahdat, Sajeve S. Thomas, Serengulam V. Govindan, Pius P. Maliakal, William A. Wegener, Steven A. Hamburger, Robert M. Sharkey, and David M. Goldenberg
- 3879** Vaccination with Melanoma Helper Peptides Induces Antibody Responses Associated with Improved Overall Survival
Caroline M. Reed, Nicole D. Cresce, Ileana S. Mauldin, Craig L. Slingluff Jr, and Walter C. Olson

Personalized Medicine and Imaging

- 3888** Superiority of [⁶⁸Ga]-DOTATATE PET/CT to Other Functional Imaging Modalities in the Localization of SDHB-Associated Metastatic Pheochromocytoma and Paraganglioma
Ingo Janssen, Elise M. Blanchet, Karen Adams, Clara C. Chen, Corina M. Millo, Peter Herscovitch, David Taieb, Electron Kebebew, Hendrik Lehnert, Antonio T. Fojo, and Karel Pacak
See related commentary, p. 3815
- 3896** A Systematic Comparison of ¹⁸F-C-SNAT to Established Radiotracer Imaging Agents for the Detection of Tumor Response to Treatment
Timothy H. Witney, Aileen Hoehne, Robert E. Reeves, Ohad Ilovich, Mohammad Namavari, Bin Shen, Frederick T. Chin, Jianghong Rao, and Sanjiv S. Gambhir



Table of Contents

3906 MR-Guided Near-Infrared Spectral Tomography Increases Diagnostic Performance of Breast MRI

Michael A. Mastanduno, Junqing Xu, Fadi El-Ghussein, Shudong Jiang, Hong Yin, Yan Zhao, Ke Wang, Fang Ren, Jiang Gui, Brian W. Pogue, and Keith D. Paulsen

Cancer Therapy: Preclinical

3913 EGFR Mutations and Resistance to Irreversible Pyrimidine-Based EGFR Inhibitors

Dalia Ercan, Hwan Geun Choi, Cai-Hong Yun, Marzia Capelletti, Ting Xie, Michael J. Eck, Nathanael S. Gray, and Pasi A. Jänne
See related commentary, p. 3818

3924 The Allelic Context of the C797S Mutation Acquired upon Treatment with Third-Generation EGFR Inhibitors Impacts Sensitivity to

Subsequent Treatment Strategies

Matthew J. Niederst, Haichuan Hu, Hillary E. Mulvey, Elizabeth L. Lockerman, Angel R. Garcia, Zofia Piotrowska, Lecia V. Sequist, and Jeffrey A. Engelman
See related commentary, p. 3818

3934 APO866 Increases Antitumor Activity of Cyclosporin-A by Inducing Mitochondrial and Endoplasmic Reticulum Stress in Leukemia Cells

Antonia Cagnetta, Irene Caffa, Chirag Acharya, Debora Soncini, Prakrati Acharya, Sophia Adamia, Ivana Pierri, Micaela Bergamaschi, Anna Garuti, Giulio Fraternali, Luca Mastracci, Alessandro Provenzani, Chiara Zucal, Gianluca Damonte, Annalisa Salis, Fabrizio Montecucco, Franco Patrone, Alberto Ballestrero, Santina Bruzzone, Marco Gobbi, Alessio Nencioni, and Michele Cea

3946 MEK Inhibitor PD-0325901 Overcomes Resistance to PI3K/mTOR Inhibitor PF-5212384 and Potentiates Antitumor Effects in Human Head and Neck Squamous Cell Carcinoma

Suresh Mohan, Robert Vander Broek, Sujay Shah, Danielle F. Eytan, Matthew L. Pierce, Sophie G. Carlson, Jamie F. Coupar, Jialing Zhang, Hui Cheng, Zhong Chen, and Carter Van Waes

3957 Untouched GMP-Ready Purified Engineered Immune Cells to Treat Cancer

Trudy Straetemans, Cordula Gründer, Sabine Heijhuurs, Samantha Hol, Ineke Slaper-Cortenbach, Halvard Bönig, Zsolt Sebestyén, and Jürgen Kuball

Biology of Human Tumors

3969 Differential Expression of Immune-Regulatory Genes Associated with PD-L1 Display in Melanoma: Implications for PD-1 Pathway Blockade



Janis M. Taube, Geoffrey D. Young, Tracee L. McMiller, Shuming Chen, January T. Salas, Theresa S. Pritchard, Haiying Xu, Alan K. Meeker, Jinshui Fan, Chris Cheadle, Alan E. Berger, Drew M. Pardoll, and Suzanne L. Topalian

3977 A Leukemia-Associated CD34/CD123/CD25/CD99⁺ Immunophenotype Identifies FLT3-Mutated Clones in Acute Myeloid Leukemia

Daniela F. Angelini, Tiziana Ottone, Gisella Guerrero, Serena Lavorgna, Michela Cittadini, Francesco Buccisano, Marco De Bardi, Francesca Gargano, Luca Maurillo, Mariadomenica Divona, Nélida I. Noguera, Maria Irno Consalvo, Giovanna Borsellino, Giorgio Bernardi, Sergio Amadori, Adriano Venditti, Luca Battistini, and Francesco Lo-Coco

3986 Genome-Wide Analysis Uncovers Novel Recurrent Alterations in Primary Central Nervous System Lymphomas

Esteban Braggio, Scott Van Wier, Juhi Ojha, Ellen McPhail, Yan W. Asmann, Jan Egan, Jackline Ayres da Silva, David Schiff, M. Beatriz Lopes, Paul A. Decker, Riccardo Valdez, Raoul Tibes, Bruce Eckloff, Thomas E. Witzig, A. Keith Stewart, Rafael Fonseca, and Brian Patrick O'Neill

3995 Upregulation of ER Signaling as an Adaptive Mechanism of Cell Survival in HER2-Positive Breast Tumors Treated with Anti-HER2 Therapy

Mario Giuliano, Huizhong Hu, Yen-Chao Wang, Xiaoyong Fu, Agostina Nardone, Sabrina Herrera, Sufeng Mao, Alejandro Contreras, Carolina Gutierrez, Tao Wang, Susan G. Hilsenbeck, Carmine De Angelis, Nicholas J. Wang, Laura M. Heiser, Joe W. Gray, Sara Lopez-Tarruella, Anne C. Pavlick, Meghana V. Trivedi, Gary C. Chamness, Jenny C. Chang, C. Kent Osborne, Mothaffar F. Rimawi, and Rachel Schiff

4004 miR-663 Suppresses Oncogenic Function of CXCR4 in Glioblastoma

Yu Shi, Cong Chen, Shi-Zhu Yu, Qing Liu, Jun Rao, Hua-Rong Zhang, Hua-Liang Xiao, Ti-Wei Fu, Hua Long, Zhi-Cheng He, Kai Zhou, Xiao-Hong Yao, You-Hong Cui, Xia Zhang, Yi-Fang Ping, and Xiu-Wu Bian

4014 Induction of PD-L1 Expression by the EML4-ALK Oncoprotein and Downstream Signaling Pathways in Non-Small Cell Lung Cancer

Keiichi Ota, Koichi Azuma, Akihiko Kawahara, Satoshi Hattori, Eiji Iwama, Junko Tanizaki, Taishi Harada, Koichiro Matsumoto, Koichi Takayama, Shinzo Takamori, Masayoshi Kage, Tomoaki Hoshino, Yoichi Nakanishi, and Isamu Okamoto

Table of Contents

Letters to the Editor

- 4022** To B(MP-2) or Not To B(MP-2): Cytokines and Tumor Surgery—Letter
David S. Geller, Jonathan Gill, Michael Roth, and Richard Gorlick
- 4023** To B(MP-2) or Not To B(MP-2): Cytokines and Tumor Surgery—Response
Kurt R. Weiss

Correction

- 4024** Correction: "Vertical" Inhibition of HER2 Yields Horizontal Gains in the Clinic

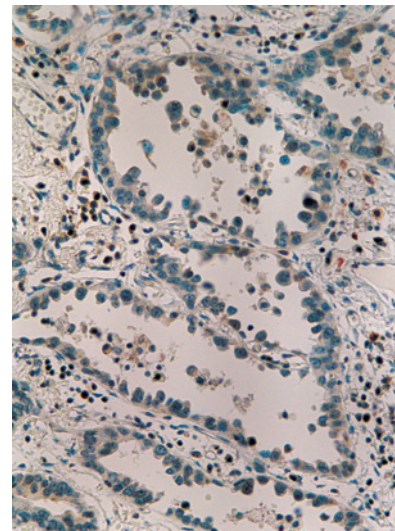
 AC icon indicates Author Choice

 CME icon indicates that this article is available for continuing medical education credit at <http://cme.aacrjournals.org>

For more information please visit www.aacrjournals.org

ABOUT THE COVER

The cover shows a surgically resected tumor specimen from a patient with non-small cell lung cancer positive for the *EML4-ALK* fusion gene. PD-L1 immunoreactivity is detected at the cell membrane or in the cytoplasm (or both) of the tumor cells. For details, see the article by Ota and colleagues on page 4014 of this issue.



Clinical Cancer Research

21 (17)

Clin Cancer Res 2015;21:3811-4024.

Updated version Access the most recent version of this article at:
<http://clincancerres.aacrjournals.org/content/21/17>

E-mail alerts [Sign up to receive free email-alerts](#) related to this article or journal.

Reprints and Subscriptions To order reprints of this article or to subscribe to the journal, contact the AACR Publications Department at pubs@aacr.org.

Permissions To request permission to re-use all or part of this article, use this link <http://clincancerres.aacrjournals.org/content/21/17>.
Click on "Request Permissions" which will take you to the Copyright Clearance Center's (CCC) Rightslink site.