

## Highlights of This Issue 663

## SPECIAL FEATURES

CCR 20<sup>th</sup> Anniversary Commentary

- 665** CCR 20<sup>th</sup> Anniversary Commentary: Stayin' Alive—Antiapoptotic Proteins and Breast Cancer  
Douglas Yee


## CCR Translations

- 667** A Tale of Two Receptors: Insulin and Insulin-Like Growth Factor Signaling in Cancer  
Douglas Yee  
*See related articles, p. 693 and p. 701*

## CCR Drug Updates

- 670** Ceritinib for the Treatment of Late-Stage (Metastatic) Non-Small Cell Lung Cancer  
Erminia Massarelli and Vassiliki Papadimitrakopoulou



## Molecular Pathways

- 675** Molecular Pathways: The PERKs and Pitfalls of Targeting the Unfolded Protein Response in Cancer  
Nancy L. Maas and J. Alan Diehl
- 680**  Molecular Pathways: Trafficking of Metabolic Resources in the Tumor Microenvironment  
Iris L. Romero, Abir Mukherjee, Hilary A. Kenny, Lacey M. Litchfield, and Ernst Lengyel

## Perspectives

- 687** Immune Escape Mechanisms as a Guide for Cancer Immunotherapy  
Gregory L. Beatty and Whitney L. Gladney

## CANCER THERAPY: CLINICAL

- 693**  Phase I Study of Intermittent Oral Dosing of the Insulin-like Growth Factor-1 and Insulin Receptors Inhibitor OSI-906 in Patients With Advanced Solid Tumors  
Robin L. Jones, Edward S. Kim, Pilar Nava-Parada, Salma Alam, Faye M. Johnson, Andrew W. Stephens, Ronit Simantov, Srinivasu Poondru, Rich Gedrich, Scott M. Lippman, Stan B. Kaye, and Craig P. Carden  
*See related commentary, p. 667*
- 701**  A Phase I Study of Continuous Oral Dosing of OSI-906, a Dual Inhibitor of Insulin-Like Growth Factor-1 and Insulin Receptors, in Patients with Advanced Solid Tumors  
Igor Puzanov, Colin R. Lindsay, Laura Goff, Jeff Sosman, Jill Gilbert, Jordan Berlin, Srinivasu Poondru, Ronit Simantov, Rich Gedrich, Andrew Stephens, Emily Chan, and T.R. Jeffrey Evans  
*See related commentary, p. 667*
- 712** Safety, Correlative Markers, and Clinical Results of Adjuvant Nivolumab in Combination with Vaccine in Resected High-Risk Metastatic Melanoma  
Geoffrey T. Gibney, Ragini R. Kudchadkar, Ronald C. DeConti, Melissa S. Thebeau, Maria P. Czupryn, Leticia Tetteh, Cabell Eysmans, Allison Richards, Michael J. Schell, Kate J. Fisher, Christine E. Horak, H. David Inzunza, Bin Yu, Alberto J. Martinez, Ibrahim Younos, and Jeffrey S. Weber
- 721** A Phase I Study of DMS612, a Novel Bifunctional Alkylating Agent  
Leonard J. Appleman, Sanjeev Balasubramaniam, Robert A. Parise, Christine Bryla, Christophe E. Redon, Asako J. Nakamura, William M. Bonner, John J. Wright, Richard Piekarz, David R. Kohler, Yixing Jiang, Chandra P. Belani, Julie Eiseman, Edward Chu, Jan H. Beumer, and Susan E. Bates
- 730** A Phase Ib Dose-Escalation Study of the Oral Pan-PI3K Inhibitor Buparlisib (BKM120) in Combination with the Oral MEK1/2 Inhibitor Trametinib (GSK1120212) in Patients with Selected Advanced Solid Tumors  
Philippe L. Bedard, Josep Tabernero, Filip Janku, Zev A. Wainberg, Luis Paz-Ares, Johan Vansteenkiste, Eric Van Cutsem, José Pérez-García, Anastasios Stathis, Carolyn D. Britten, Ngocdiep Le, Kirsten Carter, David Demanse, Denes Csonka, Malte Peters, Angela Zubel, Heidi Nauwelaerts, and Cristiana Sessa

# Table of Contents

**739 Antitumor Activity in RAS-Driven Tumors by Blocking AKT and MEK**

Anthony W. Tolcher, Khurum Khan, Michael Ong, Udai Banerji, Vassiliki Papadimitrakopoulou, David R. Gandara, Amita Patnaik, Richard D. Baird, David Olmos, Christopher R. Garrett, Jeffrey M. Skolnik, Eric H. Rubin, Paul D. Smith, Pearl Huang, Maria Learoyd, Keith A. Shannon, Anne Morosky, Ernestina Tetteh, Ying-Ming Jou, Kyriakos P. Papadopoulos, Victor Moreno, Brianna Kaiser, Timothy A. Yap, Li Yan, and Johann S. de Bono

**749 Systemic High-Dose Corticosteroid Treatment Does Not Improve the Outcome of Ipilimumab-Related Hypophysitis: A Retrospective Cohort Study**

Le Min, Frank Stephen Hodi, Anita Giobbie-Hurder, Patrick A. Ott, Jason J. Luke, Hilary Donahue, Meredith Davis, Rona S. Carroll, and Ursula B. Kaiser

**756 Aspirin, NSAIDs, and Risk of Prostate Cancer: Results from the REDUCE Study**

Adriana C. Vidal, Lauren E. Howard, Daniel M. Moreira, Ramiro Castro-Santamaria, Gerald L. Andriole, and Stephen J. Freedland

## PERSONALIZED MEDICINE AND IMAGING

**763 Breast Cancers with a BRCA1-like DNA Copy Number Profile Recur Less Often Than Expected after High-Dose Alkylating Chemotherapy**



Philip C. Schouten, Frederik Marmé, Sebastian Aulmann, Hans-Peter Sinn, Hendrik F. van Essen, Bauke Ylstra, Michael Hauptmann, Andreas Schneeweiss, and Sabine C. Linn

**771 Real-time, Near-Infrared Fluorescence Imaging with an Optimized Dye/Light Source/Camera Combination for Surgical Guidance of Prostate Cancer**

Brian P. Neuman, John B. Eifler, Mark Castanares, Wasim H. Chowdhury, Ying Chen, Ronnie C. Mease, Rong Ma, Amarnath Mukherjee, Shawn E. Lupold, Martin G. Pomper, and Ronald Rodriguez

## CANCER THERAPY: PRECLINICAL

**781 Vaccine-Induced Tumor Necrosis Factor-Producing T Cells Synergize with Cisplatin to Promote Tumor Cell Death**

Tetje C. van der Sluis, Suzanne van Duiker, Suzanna Huppelschoten, Ekaterina S. Jordanova, Elham Beyranvand Nejad, Arjen Sloots, Louis Boon, Vincent T.H.B.M. Smit, Marij J.P. Welters, Ferry Ossendorp, Bob van de Water, Ramon Arens, Sjoerd H. van der Burg, and Cornelis J.M. Melief

**795 Novel Actions of Next-Generation Taxanes Benefit Advanced Stages of Prostate Cancer**

Renée de Leeuw, Lisa D. Berman-Booty, Matthew J. Schiewer, Stephen J. Ciment, Robert B. Den, Adam P. Dicker, William K. Kelly, Edouard J. Trabulsi, Costas D. Lallas, Leonard G. Gomella, and Karen E. Knudsen

**808 Translational Impact of Nanoparticle-Drug Conjugate CRLX101 with or without Bevacizumab in Advanced Ovarian Cancer**

Elizabeth Pham, Michael J. Birrer, Scott Eliasof, Edward G. Garmey, Douglas Lazarus, Christina R. Lee, Shan Man, Ursula A. Matulonis, Christian G. Peters, Ping Xu, Carolyn Krasner, and Robert S. Kerbel

**819 Synergistic Activity of PARP Inhibition by Talazoparib (BMN 673) with Temozolomide in Pediatric Cancer Models in the Pediatric Preclinical Testing Program**

Malcolm A. Smith, C. Patrick Reynolds, Min H. Kang, E. Anders Kolb, Richard Gorlick, Hernan Carol, Richard B. Lock, Stephen T. Keir, John M. Maris, Catherine A. Billups, Dmitry Lyalin, Raushan T. Kurmasheva, and Peter J. Houghton

**833 Dual Inhibition of Bcr-Abl and Hsp90 by C086 Potently Inhibits the Proliferation of Imatinib-Resistant CML Cells**

Lixian Wu, Jing Yu, Ruijia Chen, Yang Liu, Liguang Lou, Ying Wu, Lisen Huang, Yingjuan Fan, Pinzhang Gao, Meijuan Huang, Yong Wu, Yuanzhong Chen, and Jianhua Xu

## BIOLOGY OF HUMAN TUMORS

**844 Activation of Vitamin D Receptor Signaling Downregulates the Expression of Nuclear FOXM1 Protein and Suppresses Pancreatic Cancer Cell Stemness**

Zhiwei Li, Zhiliang Jia, Yong Gao, Dacheng Xie, Daoyan Wei, Jiujiu Cui, Lopa Mishra, Suyun Huang, Yanqiao Zhang, and Keping Xie

**854 DNMT1-MicroRNA126 Epigenetic Circuit Contributes to Esophageal Squamous Cell Carcinoma Growth via ADAM9-EGFR-AKT Signaling**

Ronghua Liu, Jie Gu, Pei Jiang, Yijie Zheng, Xiaoming Liu, Xuechao Jiang, Enyu Huang, Shudao Xiong, Fengkai Xu, Guangwei Liu, Di Ge, and Yiwei Chu

**864 Recurrent PRDM10 Gene Fusions in Undifferentiated Pleomorphic Sarcoma**

Jakob Hofvander, Johnbosco Tayebwa, Jenny Nilsson, Linda Magnusson, Otte Brosjö, Olle Larsson, Fredrik Vult von Steyern, Nils Mandahl, Christopher D.M. Fletcher, and Fredrik Mertens

# Table of Contents

- 870** **Integrative Analysis of Head and Neck Cancer Identifies Two Biologically Distinct HPV and Three Non-HPV Subtypes**  
Michaela K. Keck, Zhixiang Zuo, Arun Khattri, Thomas P. Stricker, Christopher D. Brown, Matin Imanguli, Damian Rieke, Katharina Endhardt, Petra Fang, Johannes Brägelmann, Rebecca DeBoer, Mohamed El-Dinali, Serdal Aktolga, Zhengdeng Lei, Patrick Tan, Steve G. Rozen, Ravi Salgia, Ralph R. Weichselbaum, Mark W. Lingen, Michael D. Story, K. Kian Ang, Ezra E.W. Cohen, Kevin P. White, Everett E. Vokes, and Tanguy Y. Seiwert
- 882** **Evaluation of a Tumor Microenvironment–Based Prognostic Score in Primary Operable Colorectal Cancer**  
James H. Park, Donald C. McMillan, Arfon G. Powell, Colin H. Richards, Paul G. Horgan, Joanne Edwards, and Campbell S.D. Roxburgh
- 889** **pVHL/HIF-Regulated CD70 Expression Is Associated with Infiltration of CD27<sup>+</sup> Lymphocytes and Increased Serum Levels of Soluble CD27 in Clear Cell Renal Cell Carcinoma**  
Melanie Ruf, Christiane Mittmann, Anna M. Nowicka, Arndt Hartmann, Thomas Hermanns, Cédric Poyet, Maries van den Broek, Tullio Sulser, Holger Moch, and Peter Schraml
- 899** **Epithelial–Mesenchymal Transitioned Circulating Tumor Cells Capture for Detecting Tumor Progression**  
Arun Satelli, Abhisek Mitra, Zachary Brownlee, Xueqing Xia, Seth Bellister, Michael J. Overman, Scott Kopetz, Lee M. Ellis, Qing H. Meng, and Shulin Li
- 907** ** MET Amplification Status in Therapy-Naïve Adeno- and Squamous Cell Carcinomas of the Lung**  
Hans-Ulrich Schildhaus, Anne M. Schultheis, Josef Rüschoff, Elke Binot, Sabine Merkelbach-Bruse, Jana Fassunke, Wolfgang Schulte, Yon-Dschun Ko, Andreas Schlesinger, Marc Bos, Masyar Gardizi, Walburga Engel-Riedel, Michael Brockmann, Monika Serke, Ulrich Gerigk, Khosro Hekmat, Konrad F. Frank, Marcel Reiser, Holger Schulz, Stefan Krüger, Erich Stoelben, Thomas Zander, Jürgen Wolf, and Reinhard Büttner
- 916** **Stem Cells Increase in Numbers in Perinecrotic Areas in Human Renal Cancer**  
Mariana Varna, Guillaume Gapihan, Jean-Paul Feugeas, Philippe Ratajczak, Sophie Tan, Irmine Ferreira, Christophe Leboeuf, Niclas Setterblad, Arnaud Duval, Jérôme Verine, Stéphane Germain, Pierre Mongiat-Artus, Anne Janin, and Guilhem Bousquet
- 925** **DNA-PK—A Candidate Driver of Hepatocarcinogenesis and Tissue Biomarker That Predicts Response to Treatment and Survival**  
Liam Cornell, Joanne M. Munck, Clara Alsinet, Augusto Villanueva, Laura Ogle, Catherine E. Willoughby, Despina Televantou, Huw D. Thomas, Jennifer Jackson, Alastair D. Burt, David Newell, John Rose, Derek M. Manas, Geoffrey I. Shapiro, Nicola J. Curtin, and Helen L. Reeves
- LETTER TO THE EDITOR**
- 934** **Ang1 and Tie2 Are Predictive Biomarkers for Bevacizumab—Letter**  
Joseph Ciccolini, Cindy Serdjebi, Dominique Barbolosi, Bruno Lacarelle, and Fabrice Barlesi
- CORRECTION**
- 935** **Correction: Reduced p21<sup>WAF1/CIP1</sup> via Alteration of p53–DDX3 Pathway Is Associated with Poor Relapse-Free Survival in Early-Stage Human Papillomavirus–Associated Lung Cancer**

 **AC icon indicates Author Choice**

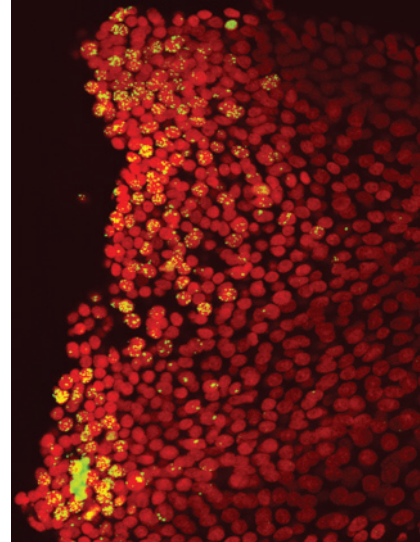
 **CME icon indicates that this article is available for continuing medical education credit at <http://cme.aacrjournals.org>**

For more information please visit [www.aacrjournals.org](http://www.aacrjournals.org)

# Table of Contents

## ABOUT THE COVER

The cover shows a patient's plucked hair bulb 24 hours after receiving an infusion of DMS612, a novel bifunctional alkylating agent. Immunohistochemical staining shows  $\gamma$ -H2AX foci as markers of DMS-induced DNA double-strand breaks. For details, see the article by Appleman and colleagues on page 721 of this issue.



# Clinical Cancer Research

**21 (4)**

*Clin Cancer Res* 2015;21:663-935.

**Updated version** Access the most recent version of this article at:  
<http://clincancerres.aacrjournals.org/content/21/4>

**E-mail alerts** [Sign up to receive free email-alerts](#) related to this article or journal.

**Reprints and Subscriptions** To order reprints of this article or to subscribe to the journal, contact the AACR Publications Department at [pubs@aacr.org](mailto:pubs@aacr.org).

**Permissions** To request permission to re-use all or part of this article, use this link <http://clincancerres.aacrjournals.org/content/21/4>. Click on "Request Permissions" which will take you to the Copyright Clearance Center's (CCC) Rightslink site.