

Prognostic Impact of *IL6* Genetic Variants in Patients with Metastatic Colorectal Cancer Treated with Bevacizumab-Based Chemotherapy

Satoshi Matsusaka¹, Diana L. Hanna¹, Shu Cao¹, Wu Zhang¹, Dongyun Yang¹, Yan Ning¹, Yu Sunakawa¹, Satoshi Okazaki¹, Martin D. Berger¹, Yuji Miyamoto¹, Anish Parekh¹, Sebastian Stintzing², Fotios Loupakis³, and Heinz-Josef Lenz¹

Abstract

Purpose: The *IL6*/*STAT3* axis promotes inflammation, angiogenesis, and cancer. The effect of genetic variants within this pathway on benefit from antiangiogenic cancer therapy is unknown. We tested whether SNPs in genes involved in *IL6*/*STAT3* signaling can predict efficacy of bevacizumab-based chemotherapy in metastatic colorectal cancer (mCRC) patients.

Experimental Design: Associations between potentially functional *IL6* (rs2069837 and rs1800795) and *STAT3* (rs744166 and rs4796793) SNPs and clinical outcomes [progression-free survival (PFS), overall survival, and tumor response rate] were evaluated in mCRC patients receiving first-line FOLFIRI plus bevacizumab in two randomized phase III trials: TRIBE ($n = 223$, training cohort) and FIRE-3 ($n = 288$, validation cohort). Patients receiving FOLFIRI plus cetuximab in FIRE-3 ($n = 264$) served as a control cohort. The interaction between genotype and primary tumor location with clinical outcomes was examined. Genomic

DNA isolated from whole blood or tumor tissue was analyzed by PCR-based direct sequencing.

Results: Patients with an *IL6* rs2069837 G allele treated with FOLFIRI plus bevacizumab had an inferior PFS than those with the A/A genotype in TRIBE [9.4 vs. 11.1 months; HR = 1.53; 95% confidence interval (CI), 1.12–2.10; $P = 0.004$] and FIRE-3 (8.8 vs. 10.9 months; HR = 1.40; 95% CI, 1.06–1.85; $P = 0.015$). These associations were confirmed in multivariable analyses and were not seen in the control cohort. In subgroup analysis, the effect of *IL6* rs2069837 on PFS was present only in patients with left-sided cancers, but the test for interaction was not significant.

Conclusions: *IL6* rs2069837 genotype is a clinically relevant prognostic factor in mCRC patients treated with first-line bevacizumab-based chemotherapy. *Clin Cancer Res*; 22(13); 3218–26. ©2016 AACR.

Introduction

IL6 is a pleiotropic, angiogenic cytokine with far-reaching effects across vascular disease, immunity, and cancer (1, 2). As initiators of pathologic inflammation, *IL6* and its downstream effector, *STAT3*, promote colorectal cancer development (3, 4), invasion, and metastasis (5–7) by imposing genetic alterations in tumor cells (3, 8) and facilitating immune tolerance within the microenvironment (6, 9, 10). In colitis-associated cancer *in vivo* models, *IL6* enhances tumor cell proliferation and protects normal and malignant intestinal epithelial cells from apoptosis in a *STAT3*-dependent fashion.

Another critical consequence of *IL6*/*STAT3* signaling is angiogenesis. Under hypoxic states, *IL6* promotes HIF-1 α and *STAT3*

transcription, which stimulates VEGF expression, blood vessel formation, and tumor growth (11–13). In addition to tumor cells, stromal fibroblasts are an important source of *IL6* and provide a fertile environment for angiogenesis to occur (14). Evidence from tumor xenografts suggests that *IL6* may trigger defective angiogenesis with reduced pericyte coverage, independent of VEGF signaling (15), and may therefore serve as a resistance mechanism to antiangiogenic therapy.

Previous data suggest that *IL6*/*STAT3* SNPs may have prognostic utility in colorectal cancer. Although the evidence has been mixed (16–21), *IL6* SNPs have been shown to correlate with serum and intratumoral *IL6* levels (22–24), as well as the susceptibility (16–19, 21, 23, 25) and survival (20) of multiple cancers, including colorectal cancer. Similarly, *STAT3* common genetic variants have been associated with cancer risk (26). However, the potential of *IL6*/*STAT3* SNPs to predict efficacy of antiangiogenic therapy in colorectal cancer has not been tested.

The primary objective of this study was to investigate the predictive and prognostic impact of functionally significant *IL6* and *STAT3* polymorphisms in metastatic colorectal cancer (mCRC) patients receiving cytotoxic and antiangiogenic therapy. We determined associations between *IL6* (rs2069837 and rs1800795) and *STAT3* (rs744166 and rs4796793) SNPs and outcomes in a phase III mCRC trial of first-line bevacizumab-based chemotherapy. We then validated our findings in an independent patient cohort from another large phase III study and

¹Division of Medical Oncology, Norris Comprehensive Cancer Center, Keck School of Medicine, University of Southern California, Los Angeles, California. ²Department of Hematology and Oncology, University of Munich, Munich, Germany. ³Azienda Ospedaliero-Universitaria Pisana, Istituto Toscano Tumori, Pisa, Italy.

Note: Supplementary data for this article are available at Clinical Cancer Research Online (<http://clincancerres.aacrjournals.org/>).

Corresponding Author: Heinz-Josef Lenz, Norris Comprehensive Cancer Center, University of Southern California, 1441 Eastlake Avenue, Suite 3456, Los Angeles, CA 90033. Phone: 323-865-3955; Fax: 323-865-0061; E-mail: lenz@med.usc.edu

doi: 10.1158/1078-0432.CCR-15-2422

©2016 American Association for Cancer Research.

Translational Relevance

The IL6/STAT3 signaling pathway promotes inflammation, angiogenesis, and cancer. There are currently no validated markers of benefit from antiangiogenic cancer therapy, and understanding the prognostic impact of genetic variants within the IL6/STAT3 axis has the potential to inform therapeutic decisions. We analyzed associations between *IL6* and *STAT3* polymorphisms and outcomes in metastatic colorectal cancer (mCRC) patients who underwent targeted and cytotoxic therapy in two randomized phase III studies. Our data show for the first time that *IL6* rs2069837 genotype is significantly associated with progression-free survival in mCRC patients treated with first-line bevacizumab-based chemotherapy, but not in those receiving cetuximab-based treatment. Furthermore, our results suggest that the effect of *IL6* polymorphisms on outcomes may depend on primary tumor location. Therefore, *IL6* genetic variants may serve as a promising biomarker in patients with mCRC treated with bevacizumab-based chemotherapy.

examined associations in a control cohort of patients receiving cetuximab-based treatment. In addition, we assessed the influence of primary tumor site on the observed associations to identify potentially clinically relevant profiles.

Materials and Methods

Study design and patient population

A total of 775 patients were included in this study. Patients treated with first-line FOLFIRI plus bevacizumab in the randomized, open-label, phase III TRIBE trial (24) served as the training cohort, whereas patients treated with first-line FOLFIRI plus bevacizumab in the randomized, open-label, phase III FIRE-3 trial (27) served as the validation cohort and patients treated with first-line FOLFIRI plus cetuximab in FIRE-3 served as the control cohort. Patients without sufficient blood for analysis were excluded. Analysis of the effects of *IL6* (rs2069837, rs1800795) and *STAT3* (rs744166, rs4796793) SNPs on clinical outcomes was conducted in 223 mCRC patients treated with first-line FOLFIRI plus bevacizumab in TRIBE (24) with sufficient blood for analysis (87% of 256 enrolled patients). Relevant SNPs significantly associated with outcomes were then examined in the validation and control cohorts. The validation cohort consisted of 288 patients with sufficient tissue (98% enrolled of 295 patients) treated with first-line FOLFIRI plus bevacizumab in FIRE-3 (27). The control set consisted of 264 patients with sufficient tissue (89% of 297 enrolled patients) treated with first-line FOLFIRI plus cetuximab in FIRE-3.

Patients in the training, validation, and control cohorts had histologically confirmed stage IV colorectal adenocarcinoma, with measurable disease per RECIST 1.0 and no prior treatment for metastatic disease or exposure to irinotecan, bevacizumab, or cetuximab. Standard inclusion and exclusion criteria were applied. Prior adjuvant oxaliplatin treatment was allowed in both TRIBE and FIRE-3 if more than 12 months had elapsed between the end of treatment and the date of study enrollment. Patients received bevacizumab (5 mg/kg) or cetuximab (400 mg/kg), followed by irinotecan (180 mg/m²) administered with folinic

acid (leucovorin; 200 mg/m²), 5-fluorouracil (5-FU; 400 mg/m²) bolus infusion, and 5-FU (2,400 mg/m²) as a 48-hour continuous infusion. The regimen was repeated at two-week intervals. In the TRIBE study, patients received 12 cycles of FOLFIRI plus bevacizumab, followed by fluorouracil and bevacizumab maintenance therapy. Treatment was administered in all patients until the time of disease progression, intolerable toxicities, or patient withdrawal. Responses were measured by intravenous contrast-enhanced CT scans every 8 weeks according to RECIST v1.0.

Study protocols were approved by the Institutional Review Boards of each participating center and conducted in accordance with the Declaration of Helsinki and Good Clinical Practice Guidelines. All patients signed informed consent for the analysis of molecular correlates.

Candidate polymorphisms

Genes were chosen according to the previously published literature and databases. Polymorphisms were chosen for investigation if the minor allele frequency exceeded 10% in Caucasians according to the ENSEMBL database (<http://www.ensembl.org/index.html>) and if the functional or predicted functional relevance of gene transcription or protein expression was described previously. Functional significance was predicted based on information provided by the National Institute of Environmental Health Science SNP Function Prediction, Queen's University F-SNP, and the location of the SNP in the protein-coding region of the gene (<http://snpinfo.niehs.nih.gov/snpinfo/snptag.htm>).

Genotyping

Genomic DNA was extracted from the peripheral whole blood of patients in the training cohort and from formalin-fixed paraffin-embedded (FFPE) tissues of patients from the validation and control cohorts using the QIAamp Kit (Qiagen) according to the manufacturer's instructions (www.qiagen.com). PCR-based direct DNA sequence analysis using ABI 3100A Capillary Genetic Analyzer and Sequencing Scanner v1.0 (Applied Biosystems) was performed for genotyping the SNPs. The extracted DNA was amplified using the primer sets shown in Supplementary Table S1 and analyzed by PCR-based direct DNA sequencing.

For quality control purposes, a random selection of 10% of the samples was reexamined for each polymorphism, and the genotype concordance rate was 100%. The investigator analyzed the sequencing data using the ABI Sequencing Scanner v1.0 (Applied Biosystems, Life Technologies) and was blinded to the clinical dataset.

Statistical analysis

The primary outcome measure was progression-free survival (PFS), defined as time from randomization to first documented disease progression or death from any cause. If progression or death was not observed, PFS was censored on the day of the last CT scan. Secondary endpoints were response rate (RR) and overall survival (OS). Patients were dichotomized into responders (including complete or partial response) and nonresponders (including stable or progressive disease) as defined by RECIST. OS was defined as the period from randomization to the date of death or censored on the date of last contact if alive. Allelic distribution of polymorphisms by ethnicity was tested for deviation from Hardy-Weinberg equilibrium (HWE) using the exact test.

Matsusaka et al.

The differences between baseline characteristics for the three cohorts were compared by using the χ^2 test or the Kruskal–Wallis test whenever appropriate. Associations between SNPs and PFS, OS, and RR were examined using Kaplan–Meier curves, log-rank test, and Fisher exact test, respectively. A Cox proportional hazards regression model with stratification factors was fitted to reevaluate the association between SNPs and PFS and OS, considering imbalances in the distributions of baseline characteristics among the cohorts. Codominant, dominant, and additive models for each SNP were analyzed. For the additive model, a trend test was calculated, assigning a linear score to each genotype (0 for homozygous common allele, 1 for heterozygous common allele, and 2 for homozygous rare allele). The baseline demographic and clinical characteristics that remained significantly associated with endpoints in the multivariable analysis ($P < 0.10$) were included in the final model. These findings were then evaluated in the independent validation and control cohorts. Subgroup analyses by tumor location were also investigated. Interaction terms of SNPs and tumor location were included, and likelihood ratio tests were performed in the multivariable Cox proportional hazards regression models. Case-wide deletion for missing polymorphisms was applied in univariate and multivariable analysis.

The training cohort consisted of 223 patients (171 PFS events); therefore, there was 80% power to detect an association between a SNP and PFS with a minimum HR from 1.54 to 2.07 using a two-sided 0.05-level log-rank test. We assumed that the minor allele frequency varied from 0.05 to 0.4, and the dominant model was used. In the validation cohort, there was greater than 88% power using the same test to detect the same HRs with the same allele frequencies under the dominant model ($n = 288$, 245 PFS events). In the control cohort ($n = 264$, 229 PFS events), there was 95% power to demonstrate no significant association between a SNP and PFS, with a HR equal to 1.00 under the alternative hypothesis against the null hypothesis (HR, 1.54) for a SNP with a minor allele frequency of 0.3, using a dominant model and a one-sided 0.05-level test.

SAS 9.4 (SAS Institute) was used to perform all analyses. All tests were two sided at a significance level of 0.05.

Results

Patient and tumor characteristics

Clinicopathologic characteristics for the training, validation, and control cohorts are presented in Table 1. The median follow-up was 4.1 years in the training cohort, 3.4 years in the validation cohort, and 3.4 years in the control cohort. The median PFS and OS in each cohort were as follows: 8.2 months and 26.1 months (TRIBE training cohort), 10.1 months and 24.2 months (FIRE-3 validation cohort), and 9.6 months and 28.0 months (FIRE-3 control cohort).

Associations between baseline characteristics and clinical outcomes were examined using the log-rank test in univariate analysis. In the training cohort, Eastern Cooperative Oncology Group (ECOG) performance status, primary tumor resection, and *BRAF* status were significantly associated with PFS and OS. In addition, age, primary tumor site, number of metastases, time to metastasis, and adjuvant chemotherapy were also significantly correlated with OS (Supplementary Table S1). In the validation cohort, ECOG performance status was significantly associated with PFS

and OS. In addition, primary tumor site, liver only disease, number of metastases, and primary tumor resection were also significantly associated with OS (Supplementary Table S2). In the control cohort, primary tumor site was significantly associated with PFS and OS. In addition, sex was significantly correlated with PFS; lung metastasis, liver metastasis, number of metastases, primary tumor resection, time to metastasis, and high LDH and *KRAS* status were also significantly associated with OS (Supplementary Table S3).

Clinical outcomes by *IL6* and *STAT3* genetic variants in patients receiving FOLFIRI with bevacizumab: TRIBE and FIRE-3

All genotype frequencies for candidate polymorphisms analyzed were within HWE ($P > 0.05$) for each ethnic/race group in each cohort.

Genotyping for the *IL6* rs2069837 candidate SNPs was successful in 223 patients and 270 (94%) patients in the training and validation cohorts, respectively. In 18 patients of the validation cohort, genotyping was not successful due to limited quantity or quality of extracted genomic DNA.

Associations between *IL6* rs2069837 and outcomes were analyzed (Table 2). Among evaluable patients in the training ($n = 223$) and validation ($n = 270$) cohorts, 58.3% and 32.2% carried a G allele in *IL6* rs2069837, respectively.

In the TRIBE training cohort, patients carrying an *IL6* rs2069837 G allele had an inferior median PFS of 9.4 months compared with those with the A/A genotype, who had a median PFS of 11.1 months [HR, 1.53; 95% confidence interval (CI), 1.12–2.10; $P = 0.004$; Table 2; Fig. 1A]. This association remained significant in multivariable analysis (HR, 1.50; adjusted $P = 0.033$; Table 2). Additive models showed no evidence of significant effect for each G allele. There was no evidence for an association between *IL6* rs2069837 genotype and RR or any significant relationships between *IL6* rs1800795 and *STAT3* (rs744166, rs4796793) genotype and outcomes in the training cohort (Supplementary Table S4).

In the FIRE-3 validation cohort, *IL6* rs2069837 was significantly associated with PFS in univariate analysis. Patients harboring any G allele had a shorter median PFS (8.8 months) compared with those with an A/A genotype (10.9 months; HR, 1.40; 95% CI, 1.06–1.85; $P = 0.015$; Table 2; Fig. 1B). In multivariable analysis, *IL6* rs2069837 genotype remained significantly associated with PFS (HR, 1.34; adjusted $P = 0.047$). In addition, those with an A/A genotype had a significantly higher tumor response rate compared with those with any G allele (67% vs. 52%, Fisher exact $P = 0.026$).

There was no evidence for an association between *IL6* rs2069837 and OS in either the training or validation cohorts.

Clinical outcomes by *IL6* genetic variants in patients receiving FOLFIRI with cetuximab: FIRE-3

In the FIRE-3 control cohort, genotyping for the *IL6* rs2069837 was successful in 264 patients (89%). Genotyping was not successful in 33 patients because of a limited quantity and quality of extracted genomic DNA. Patients with the G/G genotype had a significantly lower RR (33%) than those with the A/G or A/A variants (70% for both, Fisher exact $P = 0.042$; Table 3). There was no evidence for an association between the *IL6* rs2069837 genotype with PFS or OS in univariate or multivariate analyses (Table 2).

Table 1. Baseline patient and tumor characteristics

	Training cohort (TRIBE) (n = 223) n (%)	Validation cohort (FIRE-3) (n = 288) n (%)	Control cohort (FIRE-3) (n = 264) n (%)	P ^a
Gender				0.53
Male	136 (61)	189 (66)	171 (65)	
Female	87 (39)	99 (34)	93 (35)	
Age (years)				
Median (range)	60 (29–75)	65 (31–76)	65 (38–79)	<0.001
≤65	160 (72)	151 (52)	140 (53)	<0.001
>65	63 (28)	137 (48)	124 (47)	
Performance status				<0.001
ECOG 0	183 (82)	159 (55)	135 (51)	
ECOG ≥1	39 (17)	129 (45)	129 (49)	
Unknown ^b	1 (1)			
Primary tumor site				0.038
Right-sided colon	57 (26)	63 (22)	38 (14)	
Left-sided colon	151 (68)	173 (60)	174 (66)	
Unknown ^b	15 (7)	52 (18)	52 (20)	
Liver only metastases				0.94
Yes	71 (32)	95 (33)	88 (33)	
No	152 (68)	193 (67)	176 (67)	
Number of metastases				0.97
<2	95 (43)	105 (36)	92 (35)	
≥2	128 (57)	137 (48)	125 (47)	
Unknown ^b		46 (16)	47 (18)	
Time to metastasis				0.15
Synchronous	184 (83)	183 (64)	163 (62)	
Metachronous	39 (17)	58 (20)	52 (20)	
Unknown ^b		46 (16)	47 (18)	
Primary tumor resected				<0.001
Yes	142 (64)	249 (86)	219 (83)	
No	81 (36)	39 (14)	44 (17)	
Adjuvant chemotherapy				0.027
Yes	27 (12)	53 (18)	56 (21)	
No	196 (88)	235 (82)	207 (79)	
High LDH				0.66
Yes	104 (47)	71 (25)	64 (24)	
No	87 (39)	70 (24)	64 (24)	
Unknown ^b	32 (14)	147 (51)	136 (52)	
KRAS status				<0.001
Wild type	95 (43)	242 (84)	217 (82)	
Mutant	90 (40)	46 (16)	47 (18)	
Unknown ^b	38 (17)			

Abbreviation: LDH, lactate dehydrogenase.

^aBased on χ^2 test or Kruskal-Wallis test whenever appropriate.^bNot included in the χ^2 test.

Effect of *IL6* genetic variants on clinical outcomes by primary tumor location in patients receiving FOLFIRI with bevacizumab: TRIBE and FIRE-3

In a prior study, we showed that the impact of genetic variants involved in pericyte maturation on outcomes was influenced by tumor subsite (28). Here, we explored whether associations between *IL6* rs2069837 and outcomes were affected by primary tumor location.

In patients with left-sided colon cancer, *IL6* rs2069837 genotype was significantly associated with PFS in the training and validation cohorts. In the TRIBE training cohort, patients with any G allele had a significantly inferior PFS (9.7 months) compared with those with an A/A genotype in univariate analysis (11.1 months; HR, 1.43; 95% CI, 0.97–2.12; $P = 0.050$; Table 3). Similarly, in FIRE-3 patients receiving bevacizumab-based therapy, patients with any G allele had significantly shorter PFS (10.2 months) compared with those with an A/A genotype in univariate

analysis (11.7 months; HR, 1.46; 95% CI, 0.99–2.16; $P = 0.047$; Table 3). In multivariable analysis, there was a trend towards inferior PFS among *IL6* rs2069837 G allele carriers in both cohorts, but this did not reach statistical significance (adjusted $P = 0.088$ and 0.090 in the training and validation cohorts, respectively; Table 3).

There was no evidence for an association between *IL6* rs2069837 genotype and outcomes in patients with right-sided tumors in either the training or validation cohorts. However, the interaction term of *IL6* rs2069837 and tumor location showed no significance in both cohorts.

Discussion

IL6/STAT3 signaling is crucial for angiogenesis (29, 30). As activators of VEGF expression and tumor vessel development, *IL6* and STAT3 may serve as important potential biomarkers of

Table 2. Association between *IL6 rs2069837* with clinical outcomes

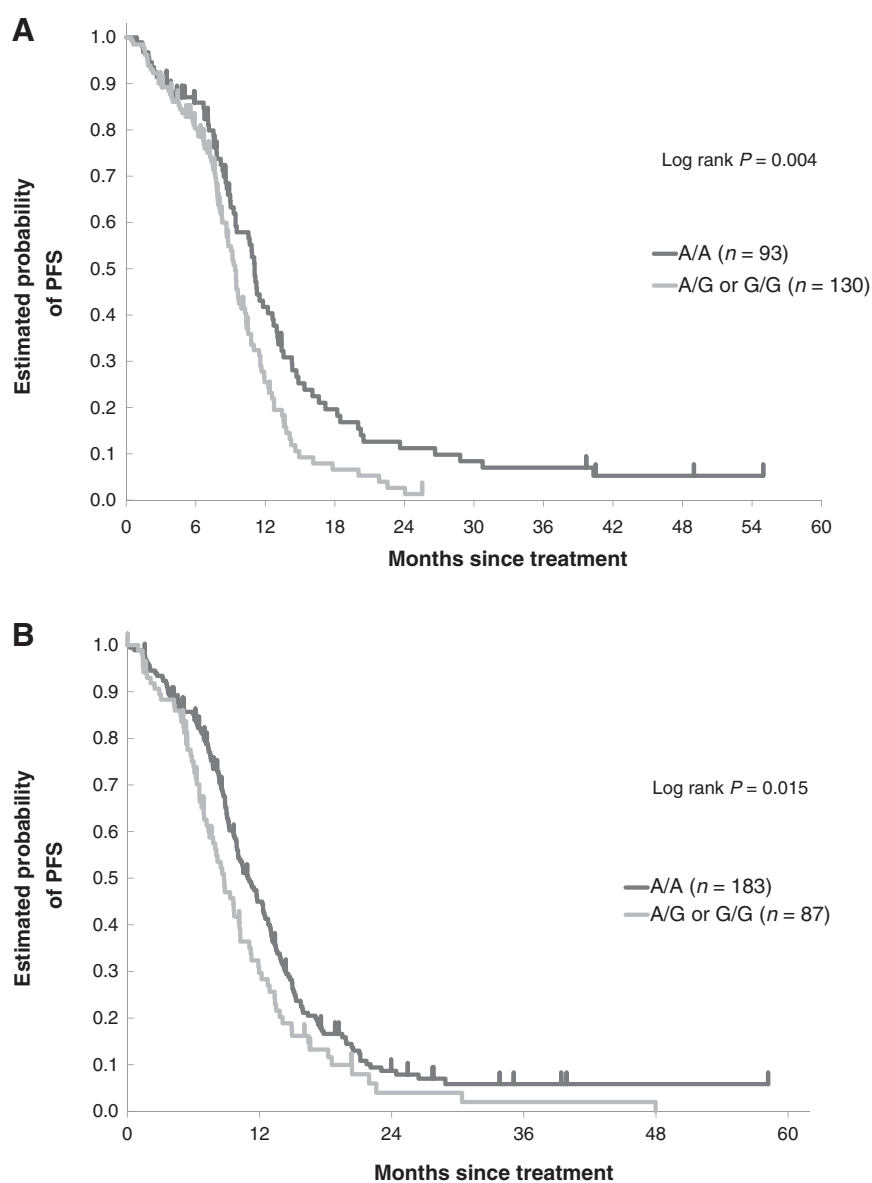
	Tumor response						PFS						OS					
	N	CR + PR	SD + PD	P ^a	Median, months (95% CI)	HR (95% CI) ^b	P ^a	HR (95% CI) ^b	P ^a	Median, months (95% CI)	HR (95% CI) ^b	P ^a	HR (95% CI) ^b	P ^a	Median, months (95% CI)	HR (95% CI) ^b	P ^a	
Training cohort																		
A/A	93	57 (63%)	34 (37%)	0.11	11.1 (9.4-12.6)	1 (reference)	0.001	1 (reference)	0.017	26.8 (23.9-35.8)	1 (reference)	0.34	1 (reference)	0.70				
A/G	116	58 (52%)	53 (48%)		9.2 (8.0-9.7)	1.68 (1.22-2.33)		1.67 (1.14-2.46)		22.5 (19.4-27.9)	1.24 (0.91-1.69)		1.17 (0.81-1.70)					
G/G	14	11 (79%)	3 (21%)		12.7 (8.2-14.2)	0.81 (0.41-1.62)		0.73 (0.29-1.84)		31.9 (16.3-44.1)	0.97 (0.52-1.83)		1.05 (0.45-2.44)					
Additive model:																		
A/A	93	57 (63%)	34 (37%)	0.33	11.1 (9.4-12.6)	1 (reference)	0.004	1 (reference)	0.033	26.8 (23.9-35.8)	1 (reference)	0.22	1 (reference)	0.43				
Any G	130	69 (55%)	56 (45%)		9.4 (8.6-10.3)	1.53 (1.12-2.10)		1.50 (1.03-2.17)		22.9 (19.8-27.9)	1.21 (0.89-1.63)		1.16 (0.81-1.66)					
HR per G																		
A/A	183	113 (67%)	56 (33%)	0.040	10.9 (9.9-12.4)	1 (reference)	0.024	1 (reference)	0.072	26.1 (23.1-28.4)	1 (reference)	0.15	1 (reference)	0.59				
A/G	58	25 (47%)	28 (53%)		7.8 (6.5-9.3)	1.54 (1.12-2.11)		1.47 (1.06-2.03)		22.7 (14.7-25.9)	1.21 (0.85-1.73)		1.11 (0.78-1.59)					
G/G	29	16 (62%)	10 (38%)		10.2 (8.2-12.7)	1.17 (0.75-1.82)		1.12 (0.71-1.77)		19.5 (15.4-29.1)	1.51 (0.96-2.38)		1.26 (0.78-2.03)					
Additive model:																		
A/A	183	113 (67%)	56 (33%)	0.026	10.9 (9.9-12.4)	1 (reference)	0.015	1 (reference)	0.047	26.1 (23.1-28.4)	1 (reference)	0.084	1 (reference)	0.36				
Any G	87	41 (52%)	38 (48%)		8.8 (7.2-10.2)	1.40 (1.06-1.85)		1.34 (1.00-1.79)		22.1 (16.7-25.9)	1.30 (0.96-1.76)		1.16 (0.85-1.58)					
HR per G																		
Control cohort																		
A/A	179	108 (70%)	46 (30%)	0.042	9.5 (8.3-10.4)	1 (reference)	0.22	1 (reference)	0.24	28.7 (23.5-36.4)	1 (reference)	0.66	1 (reference)	0.43				
A/G	71	43 (70%)	18 (30%)		9.7 (7.9-12.2)	1.04 (0.78-1.39)		0.98 (0.73-1.31)		28.5 (20.3-38.3)	1.09 (0.77-1.55)		1.10 (0.77-1.56)					
G/G	14	4 (33%)	8 (67%)		6.0 (1.9-10.9)	1.64 (0.93-2.91)		1.61 (0.91-2.85)		20.2 (10.0-36.6)	1.33 (0.67-2.63)		1.56 (0.78-3.13)					
Additive model:																		
A/A	179	108 (70%)	46 (30%)	0.36	9.5 (8.3-10.4)	1 (reference)	0.46	1 (reference)	0.77	28.7 (23.5-36.4)	1 (reference)	0.48	1 (reference)	0.41				
Any G	85	47 (64%)	26 (36%)		9.6 (7.8-10.9)	1.11 (0.84-1.45)		1.04 (0.79-1.37)		25.2 (19.9-37.0)	1.13 (0.81-1.57)		1.15 (0.82-1.61)					
HR per G																		

Abbreviations: CR, complete response; PD, progressive disease; PR, partial response; SD, stable disease.

^aP value was based on Fisher exact test for tumor response.

^bP value was based on log-rank test for PFS and OS in the univariate analysis and Wald test for PFS and OS in the multivariable Cox regression model adjusted for age, performance status, primary tumor site, primary tumor resection, BRAF mutation status, and adjuvant chemotherapy in the training cohort.

^cAdjusted for sex, performance status, liver only disease, and primary tumor resection in the validation cohort and control cohort.

**Figure 1.**

Comparison of clinical outcomes by *IL6* gene polymorphism in two cohorts. Kaplan-Meier cumulative PFS probability curves stratified by *IL6* rs2069837 genotype in the training cohort (A) and validation cohort (B).

antiangiogenic therapy, yet the clinical relevance of *IL6/STAT3* genetic variants has previously not been reported. Here, we examined the predictive and prognostic impact of *IL6* and *STAT3* SNPs in patients receiving cytotoxic and targeted agents. To our knowledge, we are the first to show that *IL6* rs2069837 genotype is significantly associated with PFS in mCRC patients receiving first-line chemotherapy with bevacizumab.

IL6 maps to chromosome 7p21 and encodes a phosphorylated, glycoprotein with 212 amino acids, consisting of four introns and five exons, spanning approximately 4.9 kb of the genomic DNA (31). Binding of *IL6* to the signal transducer, gp130, along with either membrane-bound or soluble *IL6* receptor, leads to *IL6* classical or trans-signaling, respectively. Trans-signaling is implicated in T-cell activation, stromal tissue inflammation as well as cardiovascular disorders, inflammatory bowel disease, and colitis-associated cancers (1). Knockout *IL6* mice models demonstrate

deficiencies in wound healing (32) and impaired recovery from colitis (33). Clinically, elevated serum *IL6* has been associated with inferior survival in colorectal cancer (34), and in a phase II study of rectal cancer patients treated with neoadjuvant bevacizumab and chemoradiation, change in plasma *IL6* correlated with degree of tumor regression (35). Data regarding *STAT3* have been less conclusive, with studies supporting both positive (36–38) and negative (39, 40) prognostic roles for intratumoral *STAT3* expression.

Evidence relating *IL6* SNPs to colorectal cancer outcomes has been inconsistent. Although most studies have shown a decreased colorectal cancer risk with the *IL6* rs1800795 C allele (18, 19, 21), particularly in those taking NSAIDs (15, 18), Landi and colleagues reported an increased susceptibility (17), and others have been unable to demonstrate any significant association (16, 20). A study by Wilkening and colleagues showed a heterozygote

Table 3. Association between IL6 rs2069837 and clinical outcomes stratified by primary tumor location

	Tumor response										PFS					OS				
	N		CR + PR		SD + PD		P ^a		Median, months (95% CI)		HR (95% CI) ^b		P ^a		Median, months (95% CI)		HR (95% CI) ^b		P ^a	
Left-sided																				
Training cohort																				
A/A	65	39 (61%)	25 (39%)	0.19	11.1 (9.4-12.7)	1 (reference)	0.031	0.058	33.1 (24.8-39.7)	1 (reference)	0.88	0.87	1 (reference)	1.13 (0.72-1.78)						
A/G	76	38 (51%)	36 (49%)		9.6 (8.3-10.8)	1.57 (1.05-2.36)			27.9 (20.5-34.4)	1.0 (0.75-1.62)			1.02 (0.40-2.61)							
G/G	10	8 (80%)	2 (20%)	0.50	12.7 (4.5-24.0)	0.86 (0.39-1.89)	0.050	0.088	34.5 (5.2-55.5+)	1.02 (0.48-2.15)	0.65	0.62	1 (reference)	1.02 (0.40-2.61)						
Additive model:																				
A/A	65	39 (61%)	25 (39%)		11.1 (9.4-12.7)	1 (reference)			33.1 (24.8-39.7)	1 (reference)			1 (reference)	1.12 (0.72-1.73)						
Any G	86	46 (55%)	38 (45%)		9.7 (8.6-11.0)	1.43 (0.97-2.12)	0.45	0.36	28.3 (21.1-34.4)	1.09 (0.75-1.58)	0.74	0.73	1.06 (0.75-1.51)							
HR per G																				
Validation cohort																				
A/A	122	76 (68%)	35 (32%)	0.30	11.7 (9.9-13.0)	1 (reference)	0.13	0.23	27.5 (24.8-31.9)	1 (reference)	0.14	0.75	1 (reference)	1.27 (0.64-2.51)						
A/G	28	13 (52%)	12 (48%)		10.1 (6.5-12.2)	1.53 (0.97-2.44)			30.3 (16.7-42.5)	1.01 (0.59-1.73)			0.95 (0.55-1.63)							
G/G	14	9 (64%)	5 (36%)	0.18	10.2 (7.4-12.9)	1.35 (0.75-2.43)	0.047	0.090	18.9 (15.1-29.6)	1.81 (0.98-3.35)	0.32	0.85	1 (reference)	1.04 (0.66-1.65)						
Additive model:																				
A/A	122	76 (68%)	35 (32%)		11.7 (9.9-13.0)	1 (reference)			27.5 (24.8-31.9)	1 (reference)			1 (reference)	1.08 (0.79-1.48)						
Any G	42	22 (56%)	17 (44%)		10.2 (7.4-12.0)	1.46 (0.99-2.16)	0.093	0.15	21.3 (17.3-34.6)	1.25 (0.80-1.93)	0.12	0.64	1.26 (0.94-1.69)							
HR per G																				
Right-sided																				
Training cohort																				
A/A	22	14 (67%)	7 (33%)	0.80	9.3 (6.7-13.4)	1 (reference)	0.14	0.43	24.3 (12.5-33.9)	1 (reference)	0.073	0.19	1 (reference)	1.69 (0.78-3.69)						
A/G	32	16 (55%)	13 (45%)		8.8 (6.2-9.9)	1.53 (0.83-2.81)			18.3 (14.1-20.3)	1.68 (0.92-3.08)			1.55 (0.82-2.93)							
G/G	3	2 (67%)	1 (33%)	0.15	10.5 (9.0-13.0)	1.40 (0.78-2.52)	0.22	0.28	15.9 (9.3-23.7)	1.33 (0.72-2.46)	0.35	0.20	1 (reference)	1.55 (0.79-3.02)						
Additive model:																				
A/A	29	19 (70%)	8 (30%)		6.6 (5.7-8.8)	1 (reference)			21.0 (16.5-24.2)	1 (reference)			1 (reference)	1.19 (0.76-1.86)						
Any G	19	7 (41%)	10 (59%)		11.6 (7.8-17.2)	1.16 (0.75-1.74)	0.47	0.54	12.6 (7.4-17.1)	1.26 (0.74-1.71)	0.58	0.45	1.26 (0.74-1.71)							
G/G	10	5 (71%)	2 (29%)																	
Additive model: HR per G																				

Abbreviations: CR, complete response; PD, progressive disease; PR, partial response; SD, stable disease.

^aP value was based on Fisher exact test for tumor response.

^bP value was based on log-rank test for PFS and OS in the univariate analysis and Wald test for PFS and OS in the multivariable Cox regression model (adjusted for age, performance status, primary tumor site, primary tumor resection, BRAF mutation status, and adjuvant chemotherapy in the training cohort).

^cAdjusted for sex, performance status, liver only disease, and primary tumor resection in the validation cohort and control cohort.

survival advantage over those with the *IL6* rs1800795 CC genotype (20). Our study was unable to demonstrate any significant association between this SNP and outcomes. *IL6* rs2069837 is purported to be at a transcription factor-binding site and as a tag SNP may exert functional effects through linked polymorphisms at other loci. There are no reports linking *IL6* rs2069837 with cancer survival, but the G allele has been associated with increased susceptibility to cervical (23) and liver (25) cancers, in addition to increased *IL6* tumor protein expression (23). In our study, patients with a G allele had a significantly shorter median PFS compared with those with the A/A variant. Although we were not able to measure *IL6* protein expression, the *IL6* rs2069837 G allele may lead to increased *IL6* expression and serve as a surrogate for resistance towards anti-VEGF therapy in mCRC patients.

Notably, our data showed that the association between *IL6* rs2069837 and outcomes may differ by primary tumor location. We previously demonstrated that genetic variants in angiogenesis pathways, specifically pericyte maturation, variably affect outcomes in mCRC by tumor subsite (28). In this study, the effect of *IL6* rs2069837 on PFS remained significant in patients with distal but not proximal tumors. However, the test for interaction between *IL6* genotype and primary tumor site was not significant, and these findings warrant further exploration. The mechanisms remain to be elucidated, although prior studies have suggested a prominent role *IL6* plays in colitis-associated cancers, which are predominantly left sided (41). On the other hand, Dejea and colleagues (42) demonstrated that bacterial biofilms induce *IL6* expression and STAT3 activation and were particularly associated with the development of right-sided colorectal cancers. Taken together, this suggests distinct environmental and inherited mechanisms for *IL6*-mediated carcinogenesis in right- and left-sided colorectal cancers, respectively.

In addition to carcinogenesis, *IL6* contributes to hemostasis (43, 44) and vasculopathy (45, 46), and *IL6* genetic variants have been implicated in atherosclerosis (43, 47), hypertension (47), and cancer-associated thromboembolism (48). Accordingly, we explored whether *IL6* SNPs could predict bevacizumab toxicity (i.e., hypertension, bleeding, and thromboembolic events) but found no significant associations in our cohort (data not shown).

Our study is limited by its retrospective design and sample size. Importantly, we were not able to correlate *IL6* polymorphisms with serum or intratumoral *IL6* expression levels, which may lend insight in mechanisms of bevacizumab resistance. We were also not able to determine interactions between microsatellite instability (8, 49), NSAID use, or inflammatory bowel disease, all of which may be affect the influence of *IL6* polymorphisms on outcomes. Functional studies are certainly needed to determine the significance of each examined genetic variant. Whether the

observed associations can be generalized to patients receiving oxaliplatin-containing regimens should also be tested.

Comprehensive molecular profiling has advanced the understanding of several cancers, but the potential of patient genetic profiling to influence therapeutic decisions in mCRC has yet to be realized. Here, we present the first evidence that *IL6* common genetic variants are associated with PFS in mCRC patients treated with first-line bevacizumab-based chemotherapy. Our findings further suggest that the effect of *IL6* rs2069837 may rely upon primary tumor site. If confirmed in larger prospective studies, *IL6* genotype may serve as a promising predictive and prognostic biomarker in mCRC patients receiving bevacizumab-based chemotherapy.

Disclosure of Potential Conflicts of Interest

F. Loupakis is a consultant/advisory board member for Roche. H.-J. Lenz reports receiving other commercial research support from and is a consultant/advisory board member for Roche. No potential conflicts of interest were disclosed by the other authors.

Disclaimer

The content is solely the responsibility of the authors and does not necessarily represent the official views of the NCI or the NIH.

Authors' Contributions

Conception and design: S. Matsusaka, H.-J. Lenz

Development of methodology: S. Matsusaka, S. Cao, W. Zhang, S. Okazaki, H.-J. Lenz

Acquisition of data (provided animals, acquired and managed patients, provided facilities, etc.): S. Matsusaka, S. Stintzing, F. Loupakis, H.-J. Lenz

Analysis and interpretation of data (e.g., statistical analysis, biostatistics, computational analysis): S. Matsusaka, D.L. Hanna, S. Cao, W. Zhang, D. Yang, Y. Ning, H.-J. Lenz

Writing, review, and/or revision of the manuscript: S. Matsusaka, D.L. Hanna, S. Cao, W. Zhang, D. Yang, Y. Sunakawa, M.D. Berger, S. Stintzing, F. Loupakis, H.-J. Lenz

Administrative, technical, or material support (i.e., reporting or organizing data, constructing databases): Y. Sunakawa, Y. Miyamoto, A. Parekh, S. Stintzing, F. Loupakis, H.-J. Lenz

Study supervision: H.-J. Lenz

Grant Support

The project described was supported in part by award number P30CA014089 from the NCI. This project was also supported in part by the Wunderglo Project and Care to Cure Research Fund. S. Matsusaka is a recipient of Takashi Tsuruo Memorial Fund. M.D. Berger received a grant from the Swiss Cancer League (BIL KLS-3334-02-2014).

The costs of publication of this article were defrayed in part by the payment of page charges. This article must therefore be hereby marked *advertisement* in accordance with 18 U.S.C. Section 1734 solely to indicate this fact.

Received October 6, 2015; revised January 15, 2016; accepted January 19, 2016; published OnlineFirst February 2, 2016.

References

- Hunter CA, Jones SA. IL-6 as a keystone cytokine in health and disease. *Nat Immunol* 2015;16:448–57.
- Middleton K, Jones J, Lwin Z, Coward JI. Interleukin-6: an angiogenic target in solid tumours. *Crit Rev Oncol Hematol* 2014;89:129–39.
- Lin L, Liu A, Peng Z, Lin HJ, Li PK, Li C, et al. STAT3 is necessary for proliferation and survival in colon cancer-initiating cells. *Cancer Res* 2011; 71:7226–37.
- Waldner MJ, Foersch S, Neurath MF. Interleukin-6—a key regulator of colorectal cancer development. *Int J Biol Sci* 2012;8:1248–53.
- Liu H, Ren G, Wang T, Chen Y, Gong C, Bai Y, et al. Aberrantly expressed Fra-1 by IL-6/STAT3 transactivation promotes colorectal cancer aggressiveness through epithelial-mesenchymal transition. *Carcinogenesis* 2015;36:459–68.
- Xu H, Lai W, Zhang Y, Liu L, Luo X, Zeng Y, et al. Tumor-associated macrophage-derived IL-6 and IL-8 enhance invasive activity of LoVo cells induced by PRL-3 in a KCNN4 channel-dependent manner. *BMC Cancer* 2014;14:330.
- Zhou C, Tong Y, Wawrowsky K, Melmed S. PTTG acts as a STAT3 target gene for colorectal cancer cell growth and motility. *Oncogene* 2014;33:851–61.

Matsusaka et al.

8. Tseng-Rogenski SS, Hamaya Y, Choi DY, Carethers JM. Interleukin 6 alters localization of hMSH3, leading to DNA mismatch repair defects in colorectal cancer cells. *Gastroenterology* 2015;148:579–89.
9. Patel SA, Gooderham NJ. IL6 mediates immune and colorectal cancer cell crosstalk via miR-21 and miR-29b. *Mol Cancer Res* 2015;13:1502–8.
10. Wang J, Cao Z, Zhang XM, Nakamura M, Sun M, Hartman J, et al. Novel mechanism of macrophage-mediated metastasis revealed in a zebrafish model of tumor development. *Cancer Res* 2015;75:306–15.
11. Niu G, Wright KL, Huang M, Song L, Haura E, Turkson J, et al. Constitutive Stat3 activity up-regulates VEGF expression and tumor angiogenesis. *Oncogene* 2002;21:2000–8.
12. Wei LH, Kuo ML, Chen CA, Chou CH, Lai KB, Lee CN, et al. Interleukin-6 promotes cervical tumor growth by VEGF-dependent angiogenesis via a STAT3 pathway. *Oncogene* 2003;22:1517–27.
13. Xu Q, Briggs J, Park S, Niu G, Kortylewski M, Zhang S, et al. Targeting Stat3 blocks both HIF-1 and VEGF expression induced by multiple oncogenic growth signaling pathways. *Oncogene* 2005;24:5552–60.
14. Nagasaki T, Hara M, Nakanishi H, Takahashi H, Sato M, Takeyama H. Interleukin-6 released by colon cancer-associated fibroblasts is critical for tumour angiogenesis: anti-interleukin-6 receptor antibody suppressed angiogenesis and inhibited tumour-stroma interaction. *Br J Cancer* 2014;110:469–78.
15. Gopinathan G, Milagre C, Pearce OM, Reynolds LE, HodiVala-Dilke K, Leinster DA, et al. Interleukin-6 stimulates defective angiogenesis. *Cancer Res* 2015;75:3098–107.
16. Abuli A, Fernandez-Rozadilla C, Alonso-Espinaco V, Muñoz J, Gonzalo V, Bessa X, et al. Case-control study for colorectal cancer genetic susceptibility in EPICOLON: previously identified variants and mucins. *BMC Cancer* 2011;11:339.
17. Landi S, Moreno V, Gioia-Patricola L, Guino E, Navarro M, de Oca J, et al. Association of common polymorphisms in inflammatory genes interleukin (IL)6, IL8, tumor necrosis factor alpha, NFKB1, and peroxisome proliferator-activated receptor gamma with colorectal cancer. *Cancer Res* 2003;63:3560–6.
18. Slattery ML, Wolff RK, Herrick JS, Caan BJ, Potter JD. IL6 genotypes and colon and rectal cancer. *Cancer Causes Control* 2007;18:1095–105.
19. Theodoropoulos G, Papaconstantinou I, Felekouras E, Nikiteas N, Karakitsos P, Panoussopoulos D, et al. Relation between common polymorphisms in genes related to inflammatory response and colorectal cancer. *World J Gastroenterol* 2006;12:5037–43.
20. Wilkening S, Tavelin B, Canzian F, Enquist K, Palmqvist R, Altieri A, et al. Interleukin promoter polymorphisms and prognosis in colorectal cancer. *Carcinogenesis* 2008;29:1202–6.
21. Yu Y, Wang W, Zhai S, Dang S, Sun M. IL6 gene polymorphisms and susceptibility to colorectal cancer: a meta-analysis and review. *Mol Biol Rep* 2012;39:8457–63.
22. Belluco C, Olivieri F, Bonafe M, Giovagnetti S, Mammano E, Scalera R, et al. -174 G>C polymorphism of interleukin 6 gene promoter affects interleukin 6 serum level in patients with colorectal cancer. *Clin Cancer Res* 2003;9:2173–6.
23. Shi TY, Zhu ML, He J, Wang MY, Li QX, Zhou XY, et al. Polymorphisms of the Interleukin 6 gene contribute to cervical cancer susceptibility in Eastern Chinese women. *Hum Genet* 2013;132:301–12.
24. Loupakis F, Cremolini C, Masi G, Lonardi S, Zagonel V, Salvatore L, et al. Initial therapy with FOLFIRI and bevacizumab for metastatic colorectal cancer. *N Engl J Med* 2014;371:1609–18.
25. Zheng X, Han C, Shan R, Zhang H, Zheng Z, Liu Y, et al. Association of interleukin-6 polymorphisms with susceptibility to hepatocellular carcinoma. *Int J Clin Exp Med* 2015;8:6252–6.
26. Yan R, Lin F, Hu C, Tong S. Association between STAT3 polymorphisms and cancer risk: a meta-analysis. *Mol Genet Genomics* 2015;290:2261–70.
27. Heinemann V, von Weikersthal LF, Decker T, Kiani A, Vehling-Kaiser U, Al-Batran SE, et al. FOLFIRI plus cetuximab versus FOLFIRI plus bevacizumab as first-line treatment for patients with metastatic colorectal cancer (FIRE-3): a randomised, open-label, phase 3 trial. *Lancet Oncol* 2014;15:1065–75.
28. Volz NB, Stintzing S, Zhang W, Yang D, Ning Y, Wakatsuki T, et al. Genes involved in pericyte-driven tumor maturation predict treatment benefit of first-line FOLFIRI plus bevacizumab in patients with metastatic colorectal cancer. *Pharmacogenomics J* 2015;15:69–76.
29. Mar AC, Chu CH, Lee HJ, Chien CW, Cheng JJ, Yang SH, et al. Interleukin-1 receptor type 2 acts with c-Fos to enhance the expression of IL-6 and VEGF-A in colon cancer cells and induce angiogenesis. *J Biol Chem* 2015;290:22212–24.
30. Motro B, Itin A, Sachs L, Keshet E. Pattern of interleukin 6 gene expression in vivo suggests a role for this cytokine in angiogenesis. *Proc Natl Acad Sci U S A* 1990;87:3092–6.
31. Gruol DL, Nelson TE. Physiological and pathological roles of interleukin-6 in the central nervous system. *Mol Neurobiol* 1997;15:307–39.
32. McFarland-Mancini MM, Funk HM, Paluch AM, Zhou M, Giridhar PV, Mercer CA, et al. Differences in wound healing in mice with deficiency of IL-6 versus IL-6 receptor. *J Immunol* 2010;184:7219–28.
33. Sommer J, Engelowski E, Baran P, Garbers C, Floss DM, Scheller J, et al. Interleukin-6, but not the interleukin-6 receptor plays a role in recovery from dextran sodium sulfate-induced colitis. *Int J Mol Med* 2014;34:651–60.
34. Kim YW, Kim SK, Kim CS, Kim IY, Cho MY, Kim NK. Association of serum and intratumoral cytokine profiles with tumor stage and neutrophil lymphocyte ratio in colorectal cancer. *Anticancer Res* 2014;34:3481–7.
35. Willett CG, Duda DG, di Tomaso E, Boucher Y, Ancukiewicz M, Sahani DV, et al. Efficacy, safety, and biomarkers of neoadjuvant bevacizumab, radiation therapy, and fluorouracil in rectal cancer: a multidisciplinary phase II study. *J Clin Oncol* 2009;27:3020–6.
36. Jin C, Wang A, Chen J, Liu X, Wang G. Relationship between expression and prognostic ability of PTEN, STAT3 and VEGF-C in colorectal cancer. *Exp Ther Med* 2012;4:633–9.
37. Monnien F, Zaki H, Borg C, Mouglin C, Bosset JF, Mercier M, et al. Prognostic value of phosphorylated STAT3 in advanced rectal cancer: a study from 104 French patients included in the EORTC 22921 trial. *J Clin Pathol* 2010;63:873–8.
38. Gordziel C, Bratsch J, Moriggl R, Knösel T, Friedrich K. Both STAT1 and STAT3 are favourable prognostic determinants in colorectal carcinoma. *Br J Cancer* 2013;109:138–46.
39. Hbib AT, Lagorce C, Wind P, Spano JP, Des Guetz G, Milano G, et al. Identification of a functional EGF-R/p60c-src/STAT3 pathway in colorectal carcinoma: analysis of its long-term prognostic value. *Cancer Biomark* 2008;4:83–91.
40. Klupp F, Diers J, Kahlert C, Neumann L, Halama N, Franz C, et al. Expressional STAT3/STAT5 ratio is an independent prognostic marker in colon carcinoma. *Ann Surg Oncol* 2015;22:1548–55.
41. Neurath MF. Cytokines in inflammatory bowel disease. *Nat Rev Immunol* 2014;14:329–42.
42. Dejea CM, Wick EC, Hechenbleikner EM, White JR, Mark Welch JL, Rossetti BJ, et al. Microbiota organization is a distinct feature of proximal colorectal cancers. *Proc Natl Acad Sci U S A* 2014;111:18321–6.
43. Kerr R, Stirling D, Ludlam CA. Interleukin 6 and haemostasis. *Br J Haematol* 2001;115:3–12.
44. Kaser A, Brandacher G, Steurer W, Kaser S, Offner FA, Zoller H, et al. Interleukin-6 stimulates thrombopoiesis through thrombopoietin: role in inflammatory thrombocytosis. *Blood* 2001;98:2720–5.
45. Zhang W, Wang W, Yu H, Zhang Y, Dai Y, Ning C, et al. Interleukin 6 underlies angiotensin II-induced hypertension and chronic renal damage. *Hypertension* 2012;59:136–44.
46. Reitter EM, Ay C, Kaider A, Pirker R, Zielinski C, Zlabinger G, et al. Interleukin levels and their potential association with venous thromboembolism and survival in cancer patients. *Clin Exp Immunol* 2014;177:253–60.
47. Humphries SE, Luong LA, Ogg MS, Hawe E, Miller GJ. The interleukin-6 -174 G/C promoter polymorphism is associated with risk of coronary heart disease and systolic blood pressure in healthy men. *Eur Heart J* 2001;22:2243–52.
48. Malaponte G, Polesel J, Candido S, Sambataro D, Bevelacqua V, Anzaldi M, et al. IL-6-174 G>C and MMP-9-1562 C>T polymorphisms are associated with increased risk of deep vein thrombosis in cancer patients. *Cytokine* 2013;62:64–9.
49. Slattery ML, Wolff RK, Curtin K, Fitzpatrick F, Herrick J, Potter JD, et al. Colon tumor mutations and epigenetic changes associated with genetic polymorphism: insight into disease pathways. *Mutat Res* 2009;660:12–21.

Clinical Cancer Research

Prognostic Impact of *IL6* Genetic Variants in Patients with Metastatic Colorectal Cancer Treated with Bevacizumab-Based Chemotherapy

Satoshi Matsusaka, Diana L. Hanna, Shu Cao, et al.

Clin Cancer Res 2016;22:3218-3226. Published OnlineFirst February 2, 2016.

Updated version Access the most recent version of this article at:
doi:[10.1158/1078-0432.CCR-15-2422](https://doi.org/10.1158/1078-0432.CCR-15-2422)

Supplementary Material Access the most recent supplemental material at:
<http://clincancerres.aacrjournals.org/content/suppl/2016/02/02/1078-0432.CCR-15-2422.DC1>

Cited articles This article cites 49 articles, 14 of which you can access for free at:
<http://clincancerres.aacrjournals.org/content/22/13/3218.full#ref-list-1>

Citing articles This article has been cited by 3 HighWire-hosted articles. Access the articles at:
<http://clincancerres.aacrjournals.org/content/22/13/3218.full#related-urls>

E-mail alerts [Sign up to receive free email-alerts](#) related to this article or journal.

Reprints and Subscriptions To order reprints of this article or to subscribe to the journal, contact the AACR Publications Department at pubs@aacr.org.

Permissions To request permission to re-use all or part of this article, use this link
<http://clincancerres.aacrjournals.org/content/22/13/3218>.
Click on "Request Permissions" which will take you to the Copyright Clearance Center's (CCC) Rightslink site.