

Highlights of This Issue 4275

SPECIAL FEATURES

CCR Translations


- 4277** Immunotherapy of Cancer Visualized by Live Microscopy: Seeing Is Believing
Alvaro Teijeira, Iñaki Etxeberria, Mariano Ponz-Sarvisé, and Ignacio Melero
See related article, p. 4417

- 4280** Targeting Androgen Receptor Aberrations in Castration-Resistant Prostate Cancer
Adam Sharp, Jonathan Welti, Julian Blagg, and Johann S. de Bono
See related article, p. 4466

CCR New Strategies

- 4283** New Strategies in Esophageal Carcinoma: Translational Insights from Signaling Pathways and Immune Checkpoints
Victoria E. Wang, Jennifer R. Grandis, and Andrew H. Ko

Statistics in CCR

- 4291** Bayesian Optimal Interval Design: A Simple and Well-Performing Design for Phase I Oncology Trials
 Ying Yuan, Kenneth R. Hess, Susan G. Hilsenbeck, and Mark R. Gilbert

Molecular Pathways

- 4302** Molecular Pathways: The Balance between Cancer and the Immune System Challenges the Therapeutic Specificity of Targeting Nuclear Factor- κ B Signaling for Cancer Treatment
Kristen P. Zeligs, Monica K. Neuman, and Christina M. Annunziata

Review

- 4309** Mutational Landscape and Sensitivity to Immune Checkpoint Blockers
Roman M. Chabanon, Marion Pedrero, Céline Lefebvre, Aurélien Marabelle, Jean-Charles Soria, and Sophie Postel-Vinay

PERSPECTIVE

- 4322** Cancer Prevention and Interception: A New Era for Chemopreventive Approaches
 Adriana Albini, Andrea DeCensi, Franco Cavalli, and Alberto Costa

CANCER THERAPY: CLINICAL

- 4328** Blocking Indolamine-2,3-Dioxygenase Rebound Immune Suppression Boosts Antitumor Effects of Radio-Immunotherapy in Murine Models and Spontaneous Canine Malignancies
Arta M. Monjazeb, Michael S. Kent, Steven K. Grossenbacher, Christine Mall, Anthony E. Zamora, Annie Mirsoian, Mingyi Chen, Amir Kol, Stephen L. Shiao, Abhinav Reddy, Julian R. Perks, William T.N. Culp, Ellen E. Sparger, Robert J. Canter, Gail D. Skisel, and William J. Murphy

- 4341** A GRP78-Directed Monoclonal Antibody Recaptures Response in Refractory Multiple Myeloma with Extramedullary Involvement
Leo Rasche, Emmanuelle Menoret, Valentina Dubljevic, Eline Menu, Karin Vanderkerken, Constantin Lapa, Torsten Steinbrunn, Manik Chatterjee, Stefan Knop, Johannes Düll, Deanne L. Greenwood, Frank Hensel, Andreas Rosenwald, Hermann Einsele, and Stephanie Brändlein

PERSONALIZED MEDICINE AND IMAGING

- 4350** A Genome-Wide Association Study Identifies a Novel Locus for Bortezomib-Induced Peripheral Neuropathy in European Patients with Multiple Myeloma
Florence Magrangeas, Rowan Kuiper, Hervé Avet-Loiseau, Wilfried Gouraud, Catherine Guérin-Charbonnel, Ludovic Ferrer, Alexandre Aussem, Haytham Elghazel, Jérôme Suhard, Henri Der Sakissian, Michel Attal, Nikhil C. Munshi, Pieter Sonneveld, Charles Dumontet, Philippe Moreau, Mark van Duin, Loïc Campion, and Stéphane Minvielle

- 4356** Genomic *EWSR1* Fusion Sequence as Highly Sensitive and Dynamic Plasma Tumor Marker in Ewing Sarcoma
Manuela Krumbholz, Julia Hellberg, Benedikt Steif, Tobias Bäuerle, Clarissa Gillmann, Torsten Fritscher, Abbas Agaimy, Benjamin Frey, Joerg Juengert, Eva Wardelmann, Wolfgang Hartmann, Heribert Juergens, Uta Dirksen, and Markus Metzler

Table of Contents

CANCER THERAPY: PRECLINICAL

- 4366** Chaperonin Containing TCP-1 Protein Level in Breast Cancer Cells Predicts Therapeutic Application of a Cytotoxic Peptide



Rania Bassiouni, Kathleen N. Nemece, Ashley Iketani, Orielyz Flores, Anne Showalter, Amr S. Khaled, Priya Vishnubhotla, Robert W. Sprung Jr, Charalambos Kaittani, Jesus M. Perez, and Annette R. Khaled

- 4380** Immunotherapy with a HER2-Targeting *Listeria* Induces HER2-Specific Immunity and Demonstrates Potential Therapeutic Effects in a Phase I Trial in Canine Osteosarcoma

Nicola J. Mason, Josephine S. Gnanandarajah, Julie B. Engiles, Falon Gray, Danielle Laughlin, Anita Gaumnier-Hausser, Anu Wallecha, Margie Huebner, and Yvonne Paterson

- 4391** Polyamine Antagonist Therapies Inhibit Neuroblastoma Initiation and Progression

Nicholas F. Evageliou, Michelle Haber, Annette Vu, Theodore W. Laetsch, Jayne Murray, Laura D. Gamble, Ngan Ching Cheng, Kangning Liu, Megan Reese, Kelly A. Corrigan, David S. Ziegler, Hannah Webber, Candice S. Hayes, Bruce Pawel, Glenn M. Marshall, Huaqing Zhao, Susan K. Gilmour, Murray D. Norris, and Michael D. Hogarty

- 4405** Development of Engineered T Cells Expressing a Chimeric CD16-CD3 ζ Receptor to Improve the Clinical Efficacy of Mogamulizumab Therapy Against Adult T-Cell Leukemia

Hiroki Tanaka, Hiroshi Fujiwara, Fumihiro Ochi, Kazushi Tanimoto, Nicholas Casey, Sachiko Okamoto, Junichi Mineno, Kiyotaka Kuzushima, Hiroshi Shiku, Takashi Sugiyama, A. John Barrett, and Masaki Yasukawa

- 4417** *In Vivo* Fluorescence Imaging of the Activity of CEA TCB, a Novel T-Cell Bispecific Antibody, Reveals Highly Specific Tumor Targeting and Fast Induction of T-Cell-Mediated Tumor Killing



Steffi Lehmann, Ramanil Perera, Hans-Peter Grimm, Johannes Sam, Sara Colombetti, Tanja Fauti, Linda Fahmi, Teilo Schaller, Anne Freimoser-Grundschober, Jörg Zielonka, Szymon Stoma, Markus Rudin, Christian Klein, Pablo Umana, Christian Gerdes, and Marina Bacac
See related commentary, p. 4277

- 4428** Secretome Signature Identifies ADAM17 as Novel Target for Radiosensitization of Non-Small Cell Lung Cancer

Ashish Sharma, Sabine Bender, Martina Zimmermann, Oliver Riesterer, Angela Brogini-Tenzer, and Martin N. Pruschy

- 4440** Binding of Released Bim to Mcl-1 is a Mechanism of Intrinsic Resistance to ABT-199 which can be Overcome by Combination with Daunorubicin or Cytarabine in AML Cells

Xiaoja Niu, Jianyun Zhao, Jun Ma, Chengzhi Xie, Holly Edwards, Guan Wang, J. Timothy Caldwell, Shengyan Xiang, Xiaohong Zhang, Roland Chu, Zhihong J. Wang, Hai Lin, Jeffrey W. Taub, and Yubin Ge

- 4452** Myc-Driven Glycolysis Is a Therapeutic Target in Glioblastoma

Kensuke Tateishi, A. John Iafrate, Quan Ho, William T. Curry, Tracy T. Batchelor, Keith T. Flaherty, Maristela L. Onozato, Nina Lelic, Sudhandra Sundaram, Daniel P. Cahill, Andrew S. Chi, and Hiroaki Wakimoto

- 4466** Targeting Androgen Receptor Activation Function-1 with EPI to Overcome Resistance Mechanisms in Castration-Resistant Prostate Cancer



Yu Chi Yang, Carmen Adriana Banuelos, Nasrin R. Mawji, Jun Wang, Minoru Kato, Simon Haile, Iain J. McEwan, Stephen Plymate, and Marianne D. Sadar
See related commentary, p. 4280

BIOLOGY OF HUMAN TUMORS

- 4478** Extracellular Visfatin-Promoted Malignant Behavior in Breast Cancer Is Mediated Through c-Abl and STAT3 Activation



Amos C. Hung, Steven Lo, Ming-Feng Hou, Yi-Chen Lee, Chun-Hao Tsai, Yuan-Yin Chen, Wangta Liu, Yu-Han Su, Yi-Hsuan Lo, Chie-Hong Wang, Shiou-Chen Wu, Ya-Ching Hsieh, Stephen Chu-Sung Hu, Ming-Hong Tai, Yun-Ming Wang, and Shyng-Shiou F. Yuan

- 4491** Lysyl Oxidase (LOX) Transcriptionally Regulates SNAI2 Expression and TIMP4 Secretion in Human Cancers

Myriem Boufraqueh, Lisa Zhang, Naris Nilubol, Samira M. Sadowski, Shweta Kotian, Martha Quezado, and Electron Kebebew

- 4505** Defining a Population of Stem-like Human Prostate Cancer Cells That Can Generate and Propagate Castration-Resistant Prostate Cancer

Xin Chen, Qiuhui Li, Xin Liu, Can Liu, Rui Fang Liu, Kiera Rycaj, Dingxiao Zhang, Bigang Liu, Collene Jeter, Tammy Calhoun-Davis, Kevin Lin, Yue Lu, Hsueh-Ping Chao, Jianjun Shen, and Dean G. Tang

- 4517** Exosomes in Human Breast Milk Promote EMT

Wenyi Qin, Yoshikazu Tsukasaki, Santanu Dasgupta, Nitai Mukhopadhyay, Mitsuo Ikebe, and Edward R. Sauter

Table of Contents

4525 A Quantitative Analysis of Subclonal and Clonal Gene Mutations before and after Therapy in Chronic Lymphocytic Leukemia

Nisar A. Amin, Erlene Seymour, Kamlai Saiya-Cork, Brian Parkin, Kerby Shedden, and Sami N. Malek

CORRECTION

4536 Correction: Dual Blockade with Afatinib and Trastuzumab as Neoadjuvant Treatment for Patients with Locally Advanced or Operable Breast Cancer Receiving Taxane–Anthracycline Containing Chemotherapy—DAFNE (GBG-70)

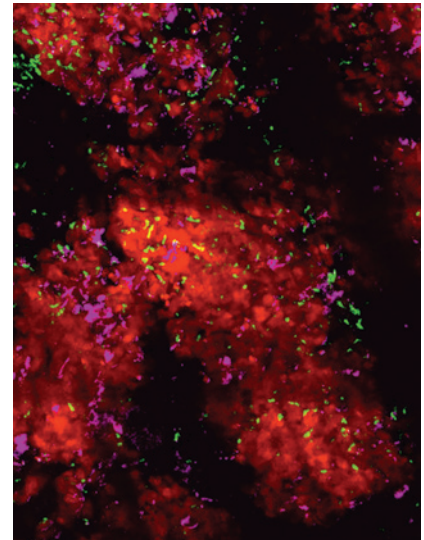
 AC icon indicates Author Choice

 CME icon indicates that this article is available for continuing medical education credit at <http://cme.aacrjournals.org>

For more information please visit www.aacrjournals.org

ABOUT THE COVER

CEA TCB (magenta), a novel T-cell bispecific antibody, specifically binds LS174T tumor cells (red) subcutaneously cogenerated with huPMBCs (green T cells) into the skin of mice. Tumor-cell targeting by CEA TCB is demonstrated by intravital, 2-photon microscopic imaging, 24 hours after intravenous injection of fluorescently (A647) labeled CEA TCB. For details, see the article by Lehmann and colleagues on page 4417 of this issue.



Clinical Cancer Research

22 (17)

Clin Cancer Res 2016;22:4275-4536.

Updated version Access the most recent version of this article at:
<http://clincancerres.aacrjournals.org/content/22/17>

E-mail alerts [Sign up to receive free email-alerts](#) related to this article or journal.

Reprints and Subscriptions To order reprints of this article or to subscribe to the journal, contact the AACR Publications Department at pubs@aacr.org.

Permissions To request permission to re-use all or part of this article, use this link <http://clincancerres.aacrjournals.org/content/22/17>.
Click on "Request Permissions" which will take you to the Copyright Clearance Center's (CCC) Rightslink site.