

October 15, 2016 • Volume 22 • Number 20

Highlights of This Issue 4961

SPECIAL FEATURES

CCR Translations

- 4963** Multiparametric Genomic Assays for Breast Cancer: Time for the Next Generation?
Adam M. Brufsky and Nancy E. Davidson
See related article, p. 5043

- 4966** Cyst Fluid Analysis in Pancreatic Intraductal Papillary Mucinous Neoplasms
Peter J. Allen, Christine A. Iacobuzio-Donahue, and David S. Klimstra
See related article, p. 5141

CCR Drug Updates

- 4968** FDA Approval of Palbociclib in Combination with Fulvestrant for the Treatment of Hormone Receptor-Positive, HER2-Negative Metastatic Breast Cancer
Amanda J. Walker, Suparna Wedam, Laleh Amiri-Kordestani, Erik Bloomquist, Shengui Tang, Rajeshwari Sridhara, Wei Chen, Todd R. Palmby, Jeanne Fourie Zirkelbach, Wentao Fu, Qi Liu, Amy Tilley, Geoffrey Kim, Paul G. Kluetz, Amy E. McKee, and Richard Pazdur

Molecular Pathways



- 4973** Molecular Pathways: Interleukin-35 in Autoimmunity and Cancer
Yuliya Pylayeva-Gupta

CCR Focus

- 4980** Endocrine Cancers: Defying the Paradigms
Susan E. Bates
- 4981** Progress in Endocrine Neoplasia
Samuel A. Wells Jr
- 4989** Adrenocortical Cancer: A Molecularly Complex Disease Where Surgery Matters
Eden C. Payabyab, Sanjeev Balasubramaniam, Maureen Edgerly, Margarita Velarde, Maria J. Merino, Aradhana M. Venkatesan, Harshraj Leuva, Thomas Litman, Susan E. Bates, and Tito Fojo

- 5001** Pheochromocytoma: The First Metabolic Endocrine Cancer
Ivana Jochmanova and Karel Pacak
- 5012** Thyroid Cancer: Risk-Stratified Management and Individualized Therapy
Friedhelm Raue and Karin Frank-Raue
- 5022** Translational Diagnostics and Therapeutics in Pancreatic Neuroendocrine Tumors
Jessica E. Maxwell, Scott K. Sherman, and James R. Howe
- 5030** Novel Genetic Causes of Pituitary Adenomas
Francisca Caimari and Márta Korbonits

CANCER THERAPY: CLINICAL

- 5043** Cross-Stratification and Differential Risk by Breast Cancer Index and Recurrence Score in Women with Hormone Receptor-Positive Lymph Node-Negative Early-Stage Breast Cancer
 Ivana Sestak, Yi Zhang, Brock E. Schroeder, Catherine A. Schnabel, Mitch Dowsett, Jack Cuzick, and Dennis Sgroi
See related commentary, p. 4963
- 5049** Phase I Study of the Investigational Anti-Guanlyl Cyclase Antibody-Drug Conjugate TAK-264 (MLN0264) in Adult Patients with Advanced Gastrointestinal Malignancies
 Khaldoun Almhanna, Thea Kalebic, Cristina Cruz, Jason E. Faris, David P. Ryan, JungAh Jung, Tim Wyant, Adedigbo A. Fasanmade, Wells Messersmith, and Jordi Rodon
- 5058** BATON-CRC: A Phase II Randomized Trial Comparing Tivozanib Plus mFOLFOX6 with Bevacizumab Plus mFOLFOX6 in Stage IV Metastatic Colorectal Cancer
Al B. Benson III, Igor Kiss, John Bridgewater, Ferry A.L.M. Eskens, Carolyn Sasse, Sandra Vossen, Jihong Chen, Chip Van Sant, Howard A. Ball, Anne Keating, and Andrew Krivoshik

PERSONALIZED MEDICINE AND IMAGING

- 5068** High Intratumoral Stromal Content Defines Reactive Breast Cancer as a Low-risk Breast Cancer Subtype
Jennifer B. Dennison, Maria Shahmoradgoli, Wenbin Liu, Zhenlin Ju, Funda Meric-Bernstam, Charles M. Perou, Aysegul A. Sahin, Alana Welm, Steffi Oesterreich, Matthew J. Sikora, Robert E. Brown, and Gordon B. Mills

Table of Contents

- 5079** ACRIN 6684: Assessment of Tumor Hypoxia in Newly Diagnosed Glioblastoma Using ^{18}F -FMISO PET and MRI
Elizabeth R. Gerstner, Zheng Zhang, James R. Fink, Mark Muzi, Lucy Hanna, Erin Greco, Melissa Prah, Kathleen M. Schmainda, Akiva Mintz, Lale Kostakoglu, Edward A. Eikman, Benjamin M. Ellingson, Eva-Maria Ratai, A. Gregory Sorensen, Daniel P. Barboriak, and David A. Mankoff, for the ACRIN 6684 Trial Group

CANCER THERAPY: PRECLINICAL

- 5087** UM-164: A Potent c-Src/p38 Kinase Inhibitor with *In Vivo* Activity against Triple-Negative Breast Cancer
Rabia A. Gilani, Sameer Phadke, Li Wei Bao, Eric J. Lachacz, Michele L. Dziubinski, Kristoffer R. Brandvold, Michael E. Steffey, Frank E. Kwarczynski, Carrie R. Graveel, Kelley M. Kidwell, Sofia D. Merajver, and Matthew B. Soellner

- 5097** DS-8201a, A Novel HER2-Targeting ADC with a Novel DNA Topoisomerase I Inhibitor, Demonstrates a Promising Antitumor Efficacy with Differentiation from T-DM1
Yusuke Ogitani, Tetsuo Aida, Katsunobu Hagihara, Junko Yamaguchi, Chiaki Ishii, Naoya Harada, Masako Soma, Hiromi Okamoto, Masataka Oitate, Shingo Arakawa, Takehiro Hirai, Ryo Atsumi, Takashi Nakada, Ichiro Hayakawa, Yuki Abe, and Toshinori Agatsuma

- 5109** SIRP α -Antibody Fusion Proteins Selectively Bind and Eliminate Dual Antigen-Expressing Tumor Cells
Emily C. Piccione, Silvia Juarez, Serena Tseng, Jie Liu, Melissa Stafford, Cyndhavi Narayanan, Lijuan Wang, Kipp Weiskopf, and Ravindra Majeti

- 5120** A Novel HSP90 Inhibitor–Drug Conjugate to SN38 Is Highly Effective in Small Cell Lung Cancer
Anna V. Gaponova, Anna S. Nikonova, Alexander Y. Deneka, Meghan C. Kopp, Alexander E. Kudinov, Natalia Skobeleva, Vladimir Khazak, Luisa S. Ogawa, Kathy Q. Cai, Kelly E. Duncan, James S. Duncan, Brian L. Egleston, David A. Proia, Yanis Boumber, and Erica A. Golemis

- 5130** Preclinical Comparison of Osimertinib with Other EGFR-TKIs in EGFR-Mutant NSCLC Brain Metastases Models, and Early Evidence of Clinical Brain Metastases Activity



Peter Ballard, James W.T. Yates, Zhenfan Yang, Dong-Wan Kim, James Chih-Hsin Yang, Mireille Cantarini, Kathryn Pickup, Angela Jordan, Mike Hickey, Matthew Grist, Matthew Box, Peter Johnström, Katarina Varnäs, Jonas Malmquist, Kenneth S. Thress, Pasi A. Jänne, and Darren Cross

BIOLOGY OF HUMAN TUMORS

- 5141** Cyst Fluid Telomerase Activity Predicts the Histologic Grade of Cystic Neoplasms of the Pancreas

Tatsuo Hata, Marco Dal Molin, Masaya Suenaga, Jun Yu, Meredith Pittman, Matthew Weiss, Marcia I. Canto, Christopher Wolfgang, Anne Marie Lennon, Ralph H. Hruban, and Michael Goggins
See related commentary, p. 4966

- 5152** IgM κ and IgM λ Measurements for the Assessment of Patients with Waldenström's Macroglobulinaemia



Eileen Boyle, Salomon Manier, Julie Lejeune, Guillemette Fouquet, Stephanie Guidez, Sarah Bonnet, Houria Debarri, Helene Demarquette, Remy Dulery, Julie Gay, Bernadette Hennache, Brigitte Onraed, Jean-Luc Faucompré, Suzanna Schraen, Thierry Facon, Hervé Avet-Loiseau, Sylvie Chevret, Veronique Leblond, Stephen Harding, and Xavier Leleu



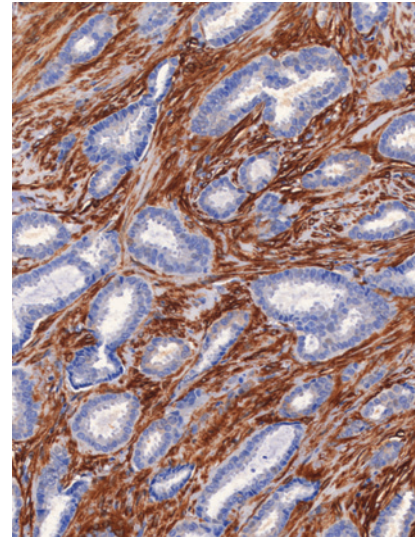
AC icon indicates Author Choice

For more information please visit www.aacrjournals.org

Table of Contents

ABOUT THE COVER

The cover shows a section of a reactive breast cancer stained for α -SMA with high stromal content. For details, see the article by Dennison and colleagues on page 5068 of this issue.



Clinical Cancer Research

22 (20)

Clin Cancer Res 2016;22:4961-5158.

Updated version Access the most recent version of this article at:
<http://clincancerres.aacrjournals.org/content/22/20>

E-mail alerts [Sign up to receive free email-alerts](#) related to this article or journal.

Reprints and Subscriptions To order reprints of this article or to subscribe to the journal, contact the AACR Publications Department at pubs@aacr.org.

Permissions To request permission to re-use all or part of this article, use this link <http://clincancerres.aacrjournals.org/content/22/20>.
Click on "Request Permissions" which will take you to the Copyright Clearance Center's (CCC) Rightslink site.