

Highlights of This Issue 1545

SPECIAL FEATURES


CCR Translations

- 1547** Arresting the Inflammatory Drive of Chronic Lymphocytic Leukemia with Ibrutinib
Pavan Bachiredy and Catherine J. Wu
See related article, p. 1572
- 1550** Of Mice and Melanoma: PDX System for Modeling Personalized Medicine
Edward J. Hartsough and Andrew E. Aplin
See related article, p. 1592

CCR Perspectives in Regulatory Science and Policy

- 1553** Focusing on Core Patient-Reported Outcomes in Cancer Clinical Trials: Symptomatic Adverse Events, Physical Function, and Disease-Related Symptoms
Paul G. Kluetz, Ashley Slagle, Elektra J. Papadopoulos, Laura Lee Johnson, Martha Donoghue, Virginia E. Kwitkowski, Wen-Hung Chen, Rajeshwari Sridhara, Ann T. Farrell, Patricia Keegan, Geoffrey Kim, and Richard Pazdur


Molecular Pathways

- 1559** Molecular Pathways: Breaking the Epithelial Cancer Barrier for Chimeric Antigen Receptor and T-cell Receptor Gene Therapy
 Christian S. Hinrichs

Review

- 1565** TREC to WHERE? Transdisciplinary Research on Energetics and Cancer
Kathryn H. Schmitz, Sarah Gehlert, Ruth E. Patterson, Graham A. Colditz, Jorge E. Chavarro, Frank B. Hu, Marian L. Neuhouser, Kathleen M. Sturgeon, Mark Thornquist, Deirdre Tobias, and Linda C. Nebeling

CANCER THERAPY: CLINICAL

- 1572** Disruption of *in vivo* Chronic Lymphocytic Leukemia Tumor–Microenvironment Interactions by Ibrutinib – Findings from an Investigator-Initiated Phase II Study
Carsten U. Niemann, Sarah E.M. Herman, Irina Maric, Julio Gomez-Rodriguez, Angeliqúe Biancotto, Betty Y. Chang, Sabrina Martyr, Maryalice Stetler-Stevenson, Constance M. Yuan, Katherine R. Calvo, Raul C. Braylan, Janet Valdez, Yuh Shan Lee, Deanna H. Wong, Jade Jones, Clare Sun, Gerald E. Marti, Mohammed Z.H. Farooqui, and Adrian Wiestner
See related commentary, p. 1547
- 1583** A Phase I Trial of BKM120 (Buparlisib) in Combination with Fulvestrant in Postmenopausal Women with Estrogen Receptor–Positive Metastatic Breast Cancer
 Cynthia X. Ma, Jingqin Luo, Michael Naughton, Foluso Ademuyiwa, Rama Suresh, Malachi Griffith, Obi L. Griffith, Zachary L. Skidmore, Nicholas C. Spies, Avinash Ramu, Lee Trani, Timothy Pluard, Gayathri Nagaraj, Shana Thomas, Zhanfang Guo, Jeremy Hoog, Jing Han, Elaine Mardis, Craig Lockhart, and Matthew J. Ellis

PERSONALIZED MEDICINE AND IMAGING


- 1592** Personalized Preclinical Trials in BRAF Inhibitor–Resistant Patient-Derived Xenograft Models Identify Second-Line Combination Therapies
Clemens Krepler, Min Xiao, Katrin Sproesser, Patricia A. Brafford, Batool Shannan, Marilda Beqiri, Qin Liu, Wei Xu, Bradley Garman, Katherine L. Nathanson, Xiaowei Xu, Giorgos C. Karakousis, Gordon B. Mills, Yiling Lu, Tamer A. Ahmed, Poulrikos I. Poulrikakos, Giordano Caponigro, Markus Boehm, Malte Peters, Lynn M. Schuchter, Ashani T. Weeraratna, and Meenhard Herlyn
See related commentary, p. 1550
- 1603** The Predictive and Prognostic Value of Early Metabolic Response Assessed by Positron Emission Tomography in Advanced Gastric Cancer Treated with Chemotherapy
 Chenchen Wang, Weijian Guo, Min Zhou, Xiaodong Zhu, Dongmei Ji, Wenhua Li, Xin Liu, Zhonghua Tao, Xiaowei Zhang, Yingjian Zhang, and Jin Li



Table of Contents

- 1611** Angiogenesis- and Hypoxia-Associated Proteins as Early Indicators of the Outcome in Patients with Metastatic Breast Cancer Given First-Line Bevacizumab-Based Therapy
Siu W. Lam, Nienke M. Nota, Agnes Jager, Monique M.E.M. Bos, Joan van den Bosch, Ankie M.T. van der Velden, Johanneke E.A. Portielje, Aafke H. Honkoop, Harm van Tinteren, Epie Boven, and ATX trial team
- 1621** DNA Topoisomerase I Gene Copy Number and mRNA Expression Assessed as Predictive Biomarkers for Adjuvant Irinotecan in Stage II/III Colon Cancer
Sune Boris Nygård, Ben Vainer, Signe Lykke Nielsen, Fred Bosman, Sabine Tejpar, Arnaud Roth, Mauro Delorenzi, Nils Brünner, and Eva Budinska
- 1632** Treatment Response Assessment in IDH-Mutant Glioma Patients by Noninvasive 3D Functional Spectroscopic Mapping of 2-Hydroxyglutarate
Ovidiu C. Andronesi, Franziska Loebel, Wolfgang Bogner, Malgorzata Marjańska, Matthew G. Vander Heiden, A. John Iafrate, Jorg Dietrich, Tracy T. Batchelor, Elizabeth R. Gerstner, William G. Kaelin, Andrew S. Chi, Bruce R. Rosen, and Daniel P. Cahill
- 1642** ImmunoPET with Anti-Mesothelin Antibody in Patients with Pancreatic and Ovarian Cancer before Anti-Mesothelin Antibody-Drug Conjugate Treatment
Laetitia E. Lamberts, Catharina W. Menke-van der Houven van Oordt, Eva J. ter Weele, Frederike Bensch, Michiel M. Smeenk, Johannes Voortman, Otto S. Hoekstra, Simon P. Williams, Bernard M. Fine, Daniel Maslyar, Johan R. de Jong, Jourik A. Gietema, Carolien P. Schröder, Alphons H.H. Bongaerts, Marjolijn N. Lub-de Hooge, Henk M.W. Verheul, Sandra M. Sanabria Bohorquez, Andor W.J.M. Glaudemans, and Elisabeth G.E. de Vries
- 1653** Comprehensive Transcriptome Profiling Reveals Multigene Signatures in Triple-Negative Breast Cancer
Yi-Rong Liu, Yi-Zhou Jiang, Xiao-En Xu, Xin Hu, Ke-Da Yu, and Zhi-Ming Shao
- 1674** Epithelial-Mesenchymal Transition Predicts Polo-Like Kinase 1 Inhibitor-Mediated Apoptosis in Non-Small Cell Lung Cancer
Renata Ferrarotto, Ruchitha Goonatilake, Suk Young Yoo, Pan Tong, Uma Giri, Shaohua Peng, John Minna, Luc Girard, Yuehong Wang, Liguang Wang, Lerong Li, Lixia Diao, David H. Peng, Don L. Gibbons, Bonnie S. Glisson, John V. Heymach, Jing Wang, Lauren A. Byers, and Faye M. Johnson
- 1687** Hypoxia-Activated Prodrug TH-302 Targets Hypoxic Bone Marrow Niches in Preclinical Leukemia Models
Juliana Benito, Marc S. Ramirez, Niki Zacharias Millward, Juliana Velez, Karine G. Harutyunyan, Hongbo Lu, Yue-xi Shi, Polina Matre, Rodrigo Jacamo, Helen Ma, Sergej Konoplev, Teresa McQueen, Andrei Volgin, Marina Protopopova, Hong Mu, Jaehyuk Lee, Pratip K. Bhattacharya, Joseph R. Marszalek, R. Eric Davis, James A. Bankson, Jorge E. Cortes, Charles P. Hart, Michael Andreeff, and Marina Konopleva
- 1699** mTOR Inhibitors Suppress Homologous Recombination Repair and Synergize with PARP Inhibitors via Regulating SUV39H1 in BRCA-Proficient Triple-Negative Breast Cancer
Wei Mo, Qingxin Liu, Curtis Chun-Jen Lin, Hui Dai, Yang Peng, Yulong Liang, Guang Peng, Funda Meric-Bernstam, Gordon B. Mills, Kaiyi Li, and Shiao-Yih Lin
- 1713** Adrenergic Stimulation of DUSP1 Impairs Chemotherapy Response in Ovarian Cancer
Yu Kang, Archana S. Nagaraja, Guillermo N. Armaiz-Pena, Piotr L. Dorniak, Wei Hu, Rajesha Rupaimoole, Tao Liu, Kshipra M. Gharpure, Rebecca A. Previs, Jean M. Hansen, Cristian Rodriguez-Aguayo, Cristina Ivan, Prahlad Ram, Vasudha Sehgal, Gabriel Lopez-Berestein, Susan K. Lutgendorf, Steven W. Cole, and Anil K. Sood
- 1725** Evaluation of a 5-Marker Blood Test for Colorectal Cancer Early Detection in a Colorectal Cancer Screening Setting
Simone Werner, Friedemann Krause, Vinzent Rolny, Matthias Strobl, David Morgenstern, Christian Datz, Hongda Chen, and Hermann Brenner

CANCER THERAPY: PRECLINICAL

- 1663** XPO1 Inhibition Enhances Radiation Response in Preclinical Models of Rectal Cancer
Isabel Ferreiro-Neira, Nancy E. Torres, Lukas F. Liesenfeld, Carlos H.F. Chan, Tristan Penson, Yosef Landesman, William Senapedis, Sharon Shacham, Theodore S. Hong, and James C. Cusack

BIOLOGY OF HUMAN TUMORS

- 1725** Evaluation of a 5-Marker Blood Test for Colorectal Cancer Early Detection in a Colorectal Cancer Screening Setting
Simone Werner, Friedemann Krause, Vinzent Rolny, Matthias Strobl, David Morgenstern, Christian Datz, Hongda Chen, and Hermann Brenner

Table of Contents

- 1734** Decreased Serum Thrombospondin-1 Levels in Pancreatic Cancer Patients Up to 24 Months Prior to Clinical Diagnosis: Association with Diabetes Mellitus



Claire Jenkinson, Victoria L. Elliott, Anthony Evans, Lucy Oldfield, Rosalind E. Jenkins, Darragh P. O'Brien, Sophia Apostolidou, Aleksandra Gentry-Maharaj, Evangelia-O Fourkala, Ian J. Jacobs, Usha Menon, Trevor Cox, Fiona Campbell, Stephen P. Pereira, David A. Tuveson, B. Kevin Park, William Greenhalf, Robert Sutton, John F. Timms, John P. Neoptolemos, and Eithne Costello

- 1744** Dysregulation of miR-212 Promotes Castration Resistance through hnRNPH1-Mediated Regulation of AR and AR-V7: Implications for Racial Disparity of Prostate Cancer

Yijun Yang, Dingwu Jia, Hogyoun Kim, Zakaria Y. Abd Elmageed, Amrita Datta, Rodney Davis, Sudesh Srivastav, Krzysztof Moroz, Byron E. Crawford, Krishnarao Moparty, Raju Thomas, Robert S. Hudson, Stefan Ambs, and Asim B. Abdel-Mageed

- 1757** Identification of Developmental Endothelial Locus-1 on Circulating Extracellular Vesicles as a Novel Biomarker for Early Breast Cancer Detection

Pyong-Gon Moon, Jeong-Eun Lee, Young-Eun Cho, Soo Jung Lee, Jin Hyang Jung, Yee Soo Chae, Han-Ik Bae, Young-Bum Kim, In-San Kim, Ho Yong Park, and Moon-Chang Baek

- 1767** InsR/IGF1R Pathway Mediates Resistance to EGFR Inhibitors in Glioblastoma

Yufang Ma, Nan Tang, Reid C. Thompson, Bret C. Mobley, Steven W. Clark, Jann N. Sarkaria, and Jialiang Wang

- 1777** The Landscape of Prognostic Outlier Genes in High-Risk Prostate Cancer

Shuang G. Zhao, Joseph R. Evans, Vishal Kothari, Grace Sun, Ashley Larm, Victor Mondine, Edward M. Schaeffer, Ashley E. Ross, Eric A. Klein, Robert B. Den, Adam P. Dicker, R. Jeffrey Karnes, Nicholas Erho, Paul L. Nguyen, Elai Davicioni, and Felix Y. Feng

- 1787** Nicotine Reduces Survival via Augmentation of Paracrine HGF-MET Signaling in the Pancreatic Cancer Microenvironment



Daniel Delitto, Dongyu Zhang, Song Han, Brian S. Black, Andrea E. Knowlton, Adrian C. Vlada, George A. Sarosi, Kevin E. Behrns, Ryan M. Thomas, Xiaomin Lu, Chen Liu, Thomas J. George, Steven J. Hughes, Shannon M. Wallet, and Jose G. Trevino

- 1800** Severe Hepatitis Promotes Hepatocellular Carcinoma Recurrence via NF- κ B Pathway-Mediated Epithelial-Mesenchymal Transition after Resection

Ting-Jung Wu, Shih-Shin Chang, Chia-Wei Li, Yi-Hsin Hsu, Tse-Ching Chen, Wei-Chen Lee, Chau-Ting Yeh, and Mien-Chie Hung

- 1813** Pericytes Promote Malignant Ovarian Cancer Progression in Mice and Predict Poor Prognosis in Serous Ovarian Cancer Patients

Devbarna Sinha, Lynn Chong, Joshy George, Holger Schlüter, Susann Mönchgesang, Stuart Mills, Jason Li, Christopher Parish, David Bowtell, for the Australian Ovarian Cancer Study Group, and Pritinder Kaur

LETTERS TO THE EDITOR

- 1825** HER2 and HER3 in HPV⁺ and HPV⁻ HNSCC—Letter

Jean-Pascal Machiels, Rachel Galot, and Sandra Schmitz

- 1826** HER2 and HER3 in HPV⁺ and HPV⁻ HNSCC—Response

Jennifer Grandis

- 1827** Afatinib + Cetuximab First-line in EGFR-Mutant Lung Cancer—Letter

Alexis B. Cortot, Denis Moro-Sibilot, and Jacques Cadranet

- 1828** Measuring Toxicity in Phase I Clinical Trials—Letter

David M. Hyman, Anne Eaton, S. Percy Ivy, David R. Spriggs, and Alexia Iasonos

 AC icon indicates Author Choice

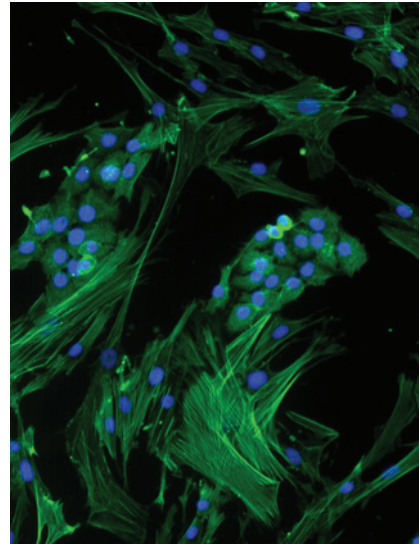
 CME icon indicates that this article is available for continuing medical education credit at <http://cme.aacrjournals.org>

For more information please visit www.aacrjournals.org

Table of Contents

ABOUT THE COVER

The cover depicts *in vitro* coculture of patient-derived tumor-associated stroma (TAS) and pancreatic cancer (PC) cells. Immunofluorescent staining demonstrates cells fixed and stained with phalloidin (green) and DAPI (blue), outlining actin cytoskeletal networks between TAS and PC cells. For details, see the article by Delitto and colleagues on page 1787 of this issue.



Clinical Cancer Research

22 (7)

Clin Cancer Res 2016;22:1545-1828.

Updated version Access the most recent version of this article at:
<http://clincancerres.aacrjournals.org/content/22/7>

E-mail alerts [Sign up to receive free email-alerts](#) related to this article or journal.

Reprints and Subscriptions To order reprints of this article or to subscribe to the journal, contact the AACR Publications Department at pubs@aacr.org.

Permissions To request permission to re-use all or part of this article, use this link <http://clincancerres.aacrjournals.org/content/22/7>.
Click on "Request Permissions" which will take you to the Copyright Clearance Center's (CCC) Rightslink site.