

## Highlights of This Issue 1

## SPECIAL FEATURES

## CCR Translations

**3** hERG Channels: From Antitargets to Novel Targets for Cancer TherapyAnnarosa Arcangeli and Andrea Becchetti  
*See related article, p. 73***6** Molecular Signature to Risk-Stratify Prostate Cancer of Intermediate RiskYu Yin, Qingfu Zhang, Hong Zhang, Yiping He, and Jiaoti Huang  
*See related article, p. 81*

## CCR Perspectives in Regulatory Science and Policy

**9** Enrolling Adolescents in Disease/Target-Appropriate Adult Oncology Clinical Trials of Investigational Agents

Meredith K. Chuk, Yeruk Mulugeta, Michelle Roth-Cline, Nitin Mehrotra, and Gregory H. Reaman

## Statistics in CCR

**13** Toxicity and Efficacy Probability Interval Design for Phase I Adoptive Cell Therapy Dose-Finding Clinical Trials

Daniel H. Li, James B. Whitmore, Wentian Guo, and Yuan Ji

## Molecular Pathways

**21** Molecular Pathways: The eIF4F Translation Initiation Complex—New Opportunities for Cancer Treatment

Hélène Malka-Mahieu, Michelle Newman, Laurent Désaubry, Caroline Robert, and Stéphan Vagner

## CANCER THERAPY: CLINICAL

**26** A Phase Ib Study of Alpelisib (BYL719), a PI3K $\alpha$ -Specific Inhibitor, with Letrozole in ER<sup>+</sup>/HER2<sup>-</sup> Metastatic Breast Cancer

Ingrid A. Mayer, Vandana G. Abramson, Luigi Formisano, Justin M. Balko, Mónica V. Estrada, Melinda E. Sanders, Dejan Juric, David Solit, Michael F. Berger, Helen H. Won, Yisheng Li, Lewis C. Cantley, Eric Winer, and Carlos L. Arteaga

**35** Phase II Study of Alemtuzumab (CAMPATH-1) in Patients with HTLV-1-Associated Adult T-cell Leukemia/lymphoma

Kamal Sharma, John E. Janik, Deirdre O'Mahony, Donn Stewart, Stefania Pittaluga, Maryalice Stetler-Stevenson, Elaine S. Jaffe, Mark Raffeld, Thomas A. Fleisher, Cathryn C. Lee, Seth M. Steinberg, Thomas A. Waldmann, and John C. Morris

**43** Genome-Wide Association Study for Anthracycline-Induced Congestive Heart Failure

Bryan P. Schneider, Fei Shen, Laura Gardner, Milan Radovich, Lang Li, Kathy D. Miller, Guanglong Jiang, Dongbing Lai, Anne O'Neill, Joseph A. Sparano, Nancy E. Davidson, David Cameron, Irmina Gradus-Pizlo, Ronald A. Mastouri, Thomas M. Suter, Tatiana Foroud, and George W. Sledge Jr

**52** Trajectories of Stress, Depressive Symptoms, and Immunity in Cancer Survivors: Diagnosis to 5 Years

Barbara L. Andersen, Neha Godiwala Goyal, Travis D. Westbrook, Brenden Bishop, and William E. Carson III

## PERSONALIZED MEDICINE AND IMAGING

**62** An Aggressive Subtype of Stage I Lung Adenocarcinoma with Molecular and Prognostic Characteristics Typical of Advanced Lung Cancers

Elisa Dama, Valentina Melocchi, Fabio Dezi, Stefania Pirroni, Rose Mary Carletti, Daniela Brambilla, Giovanni Bertalot, Monica Casiraghi, Patrick Maisonneuve, Massimo Barberis, Giuseppe Viale, Manuela Vecchi, Lorenzo Spaggiari, Fabrizio Bianchi, and Pier Paolo Di Fiore



# Table of Contents


- 73 Administration of Non-Torsadogenic human Ether-à-go-go-Related Gene Inhibitors Is Associated with Better Survival for High hERG-Expressing Glioblastoma Patients**  
Kelli B. Pointer, Paul A. Clark, Kevin W. Eliceiri, M. Shahriar Salamat, Gail A. Robertson, and John S. Kuo  
*See related commentary, p. 3*
- 81 Prognostic Utility of a New mRNA Expression Signature of Gleason Score**  
Jennifer A. Sinnott, Sam F. Peisch, Svitlana Tyekucheva, Travis Gerke, Rosina Lis, Jennifer R. Rider, Michelangelo Fiorentino, Meir J. Stampfer, Lorelei A. Mucci, Massimo Loda, and Kathryn L. Penney  
*See related commentary, p. 6*
- 88 Mutation Analysis of Cell-Free DNA and Single Circulating Tumor Cells in Metastatic Breast Cancer Patients with High Circulating Tumor Cell Counts**  
 Jacqueline A. Shaw, David S. Guttery, Allison Hills, Daniel Fernandez-Garcia, Karen Page, Brenda M. Rosales, Kate S. Goddard, Robert K. Hastings, Jinli Luo, Olivia Ogle, Laura Woodley, Simak Ali, Justin Stebbing, and R. Charles Coombes
- 97 Tumor Expression of Vitamin D Receptor and Breast Cancer Histopathological Characteristics and Prognosis**  
Jamila Al-Azhri, Yali Zhang, Wiam Bshara, Gary Zirpoli, Susan E. McCann, Thaeer Khoury, Carl D. Morrison, Stephen B. Edge, Christine B. Ambrosone, and Song Yao
- 104 BRAF V600E Mutant Colorectal Cancer Subtypes Based on Gene Expression**  
David Barras, Edoardo Missiaglia, Pratyaksha Wirapati, Oliver M. Sieber, Robert N. Jorissen, Chris Love, Peter L. Molloy, Ian T. Jones, Stephen McLaughlin, Peter Gibbs, Justin Guinney, Iris M. Simon, Arnaud D. Roth, Fred T. Bosman, Sabine Tejpar, and Mauro Delorenzi
- 116 Plasma Circulating Tumor DNA in Pancreatic Cancer Patients Is a Prognostic Marker**  
Daniel Pietrasz, Nicolas Pécuchet, Fanny Garlan, Audrey Didelot, Olivier Dubreuil, Solène Doat, Françoise Imbert-Bismut, Mehdi Karoui, Jean-Christophe Vaillant, Valérie Taly, Pierre Laurent-Puig, and Jean-Baptiste Bachet
- CANCER THERAPY: PRECLINICAL**
- 124 Combination Therapy with Anti-PD-1, Anti-TIM-3, and Focal Radiation Results in Regression of Murine Gliomas**  
Jennifer E. Kim, Mira A. Patel, Antonella Mangraviti, Eileen S. Kim, Debebe Theodoros, Esteban Velarde, Ann Liu, Eric W. Sankey, Ada Tam, Haiying Xu, Dimitrios Mathios, Christopher M. Jackson, Sarah Harris-Bookman, Tomas Garzon-Muvdi, Mary Sheu, Allison M. Martin, Betty M. Tyler, Phuoc T. Tran, Xiaobu Ye, Alessandro Olivi, Janis M. Taube, Peter C. Burger, Charles G. Drake, Henry Brem, Drew M. Pardoll, and Michael Lim
- 137 Tumor-Derived CCL2 Mediates Resistance to Radiotherapy in Pancreatic Ductal Adenocarcinoma**  
Anusha Kalbasi, Chad Komar, Graham M. Tooker, Mingen Liu, Jae W. Lee, Whitney L. Gladney, Edgar Ben-Josef, and Gregory L. Beatty
- 149 Antitumor Effect of Programmed Death-1 (PD-1) Blockade in Humanized the NOG-MHC Double Knockout Mouse**  
Tadashi Ashizawa, Akira Iizuka, Chizu Nonomura, Ryota Kondou, Chie Maeda, Haruo Miyata, Takashi Sugino, Koichi Mitsuya, Nakamasa Hayashi, Yoko Nakasu, Kouji Maruyama, Ken Yamaguchi, Ikumi Katano, Mamoru Ito, and Yasuto Akiyama
- 159 Dysregulation of EGFR Pathway in EphA2 Cell Subpopulation Significantly Associates with Poor Prognosis in Colorectal Cancer**  
Mariangela De Robertis, Luisa Loiacono, Caterina Fusilli, Maria Luana Poeta, Tommaso Mazza, Massimo Sanchez, Luigi Marchionni, Emanuela Signori, Giuseppe Lamorte, Angelo Luigi Vescovi, Jesus Garcia-Foncillas, and Vito Michele Fazio
- 171 Combination of Imatinib Mesylate and AKT Inhibitor Provides Synergistic Effects in Preclinical Study of Gastrointestinal Stromal Tumor**  
Phillip Zook, Harsh B. Pathak, Martin G. Belinsky, Lawrence Gersz, Karthik Devarajan, Yan Zhou, Andrew K. Godwin, Margaret von Mehren, and Lori Rink
- 181 Idelalisib Impacts Cell Growth through Inhibiting Translation-Regulatory Mechanisms in Mantle Cell Lymphoma**  
Qingshan Yang, Lisa S. Chen, Min Jin Ha, Kim-Anh Do, Sattva S. Neelapu, and Varsha Gandhi
- 193 CTLA-4 Limits Anti-CD20-Mediated Tumor Regression**  
Zhenhua Ren, Jingya Guo, Jing Liao, Yan Luan, Zhida Liu, Zhichen Sun, Xiaojuan Liu, Yong Liang, Hua Peng, and Yang-Xin Fu

# Table of Contents

**204 Identification of Existing Drugs That Effectively Target *NTRK1* and *ROS1* Rearrangements in Lung Cancer**

Curtis R. Chong, Magda Bahcall, Marzia Capelletti, Takayuki Kosaka, Dalia Ercan, Taobo Sim, Lynette M. Sholl, Mizuki Nishino, Bruce E. Johnson, Nathanael S. Gray, and Pasi A. Jänne

**214 Tumor-associated Lymphatic Endothelial Cells Promote Lymphatic Metastasis By Highly**

 **Expressing and Secreting SEMA4C**

Jun-Cheng Wei, Jie Yang, Dan Liu, Ming-Fu Wu, Long Qiao, Jun-Nai Wang, Quan-Fu Ma, Zhen Zeng, Shuang-Mei Ye, En-Song Guo, Xue-Feng Jiang, Lan-Ying You, Ying Chen, Li Zhou, Xiao-Yuan Huang, Tao Zhu, Li Meng, Jian-Feng Zhou, Zuo-Hua Feng, Ding Ma, and Qing-Lei Gao

**225 The Novel Pan-PIM Kinase Inhibitor, PIM447, Displays Dual Antimyeloma and Bone-Protective Effects, and Potently Synergizes with Current Standards of Care**

Teresa Paño, Antonio Garcia-Gomez, Lorena González-Méndez, Laura San-Segundo, Susana Hernández-García, Ana-Alicia López-Iglesias, Esperanza M. Algarín, Montserrat Martín-Sánchez, David Corbacho, Carlos Ortiz-de-Solorzano, Luis A. Corchete, Norma C. Gutiérrez, María-Victoria Maetos, Mercedes Garayoa, and Enrique M. Ocío


**239 The Efficacy of Oncolytic Adenovirus Is Mediated by T-cell Responses against Virus and Tumor in Syrian Hamster Model**



Xiaozhu Li, Pengju Wang, Hang Li, Xuexiang Du, Mingyue Liu, Qibin Huang, Yaohe Wang, and Shengdian Wang

## BIOLOGY OF HUMAN TUMORS

**250 A Strong B-cell Response Is Part of the Immune Landscape in Human High-Grade Serous**

 **Ovarian Metastases**

Anne Montfort, Oliver Pearce, Eleni Maniati, Benjamin G. Vincent, Lisa Bixby, Steffen Böhm, Thomas Dowe, Edmund H. Wilkes, Probir Chakravarty, Richard Thompson, Joanne Topping, Pedro R. Cutillas, Michelle Lockley, Jonathan S. Serody, Melania Capasso, and Frances R. Balkwill

**263 Integrated Epigenomics Analysis Reveals a DNA Methylation Panel for Endometrial Cancer Detection Using Cervical Scrapings**

Rui-Lan Huang, Po-Hsuan Su, Yu-Ping Liao, Tzu-I Wu, Ya-Ting Hsu, Wei-Yu Lin, Hui-Chen Wang, Yu-Chun Weng, Yu-Che Ou, Tim Hui-Ming Huang, and Hung-Cheng Lai

**273 Quadruple-Negative GIST Is a Sentinel for Unrecognized Neurofibromatosis Type 1 Syndrome**

Daniela Gasparotto, Sabrina Rossi, Maurizio Polano, Elena Tamborini, Erica Lorenzetto, Marta Sbaraglia, Alessia Mondello, Marco Massani, Stefano Lamon, Raffaella Bracci, Alessandra Mandolesi, Elisabetta Frate, Franco Stanzial, Jerin Agaj, Guido Mazzoleni, Silvana Pilotti, Alessandro Gronchi, Angelo Paolo Dei Tos, and Roberta Maestro

**283 Whole-Exome Sequencing of Salivary Gland Mucoepidermoid Carcinoma**

Hyunseok Kang, Marietta Tan, Justin A. Bishop, Siân Jones, Mark Sausen, Patrick K. Ha, and Nishant Agrawal

**289 The Prediction of Clinical Outcome in Hepatocellular Carcinoma Based on a Six-Gene Metastasis Signature**

Shengxian Yuan, Jie Wang, Yuan Yang, Jin Zhang, Hui Liu, Juanjuan Xiao, Qingguo Xu, Xinhui Huang, Bangde Xiang, Shaoliang Zhu, Lequn Li, Jingfeng Liu, Lei Liu, and Weiping Zhou

**298 Downregulation of MicroRNA-644a Promotes Esophageal Squamous Cell Carcinoma Aggressiveness and Stem Cell-like Phenotype via Dysregulation of PITX2**



Jia-Xing Zhang, Zhen-Hua Chen, Yi Xu, Jie-Wei Chen, Hui-Wen Weng, Miao Yun, Zou-San Zheng, Cui Chen, Bing-Li Wu, En-Min Li, Jian-Hua Fu, Sheng Ye, and Dan Xie

**311 Epigenome-Wide Tumor DNA Methylation Profiling Identifies Novel Prognostic Biomarkers of Metastatic-Lethal Progression in Men Diagnosed with Clinically Localized Prostate Cancer**

Shanshan Zhao, Milan S. Geybels, Amy Leonardson, Rohina Rubicz, Suzanne Kolb, Qingxiang Yan, Brandy Klotzle, Marina Bibikova, Antonio Hurtado-Coll, Dean Troyer, Raymond Lance, Daniel W. Lin, Jonathan L. Wright, Elaine A. Ostrander, Jian-Bing Fan, Ziding Feng, and Janet L. Stanford

## LETTERS TO THE EDITOR

**320 Phase I Trial: SABR and Ipilimumab—Letter**

Susan M. Hiniker, Sunil A. Reddy, Susan M. Swetter, and Susan J. Knox

**321 Phase I Trial: SABR and Ipilimumab—Response**

Chad Tang, James W. Welsh, and David Hong



# Table of Contents

## CORRECTIONS

**322** Correction: p53MVA Therapy in Patients with Refractory Gastrointestinal Malignancies Elevates p53-Specific CD8<sup>+</sup> T-cell Responses

**323** Correction: Niclosamide Inhibits Androgen Receptor Variants Expression and Overcomes Enzalutamide Resistance in Castration-Resistant Prostate Cancer

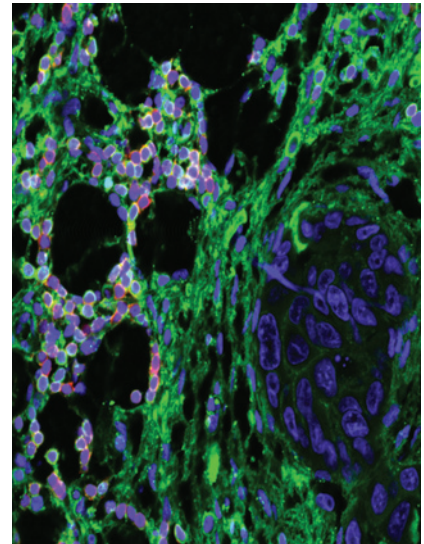


AC icon indicates Author Choice

For more information please visit [www.aacrjournals.org](http://www.aacrjournals.org)

## ABOUT THE COVER

Paraffin sections of omental metastases from high-grade serous ovarian cancer patients were fluorescently stained for CD20 (red) and IgG (green). In the tumor microenvironment, B cells (CD20<sup>+</sup>IgG<sup>+</sup> and CD20<sup>+</sup>IgG<sup>-</sup>) are often found in lymphoid aggregates next to tumor islets. Although secreted IgG immunoglobulins can bind tumor cells, the majority is deposited in stromal areas. For details, see the article by Montfort and colleagues on page 250 of this issue.



# Clinical Cancer Research

**23 (1)**

*Clin Cancer Res* 2017;23:1-323.

**Updated version** Access the most recent version of this article at:  
<http://clincancerres.aacrjournals.org/content/23/1>

**E-mail alerts** [Sign up to receive free email-alerts](#) related to this article or journal.

**Reprints and Subscriptions** To order reprints of this article or to subscribe to the journal, contact the AACR Publications Department at [pubs@aacr.org](mailto:pubs@aacr.org).

**Permissions** To request permission to re-use all or part of this article, use this link <http://clincancerres.aacrjournals.org/content/23/1>. Click on "Request Permissions" which will take you to the Copyright Clearance Center's (CCC) Rightslink site.