

## Highlights of This Issue 871

### SPECIAL FEATURES

#### CCR Translations

- 873** **Beating the Clock in T-cell Acute Lymphoblastic Leukemia**  
William L. Carroll, Iannis Aifantis, and Elizabeth Raetz  
*See related article, p. 1012*

#### Molecular Pathways

- 876** **Molecular Pathways: Deciphering Mechanisms of Resistance to Macrophage-Targeted Therapies**  
Daniela F. Quail and Johanna A. Joyce

#### Review

- 885** **The Expanding Role of the BCL6 Oncoprotein as a Cancer Therapeutic Target**  
Mariano G. Cardenas, Erin Oswald, Wenbo Yu, Fengtian Xue, Alexander D. MacKerell Jr, and Ari M. Melnick

#### Perspectives

- 894** **Biospecimen Complexity—the Next Challenge for Cancer Research Biobanks?**  
Peter H. Watson

### CANCER THERAPY: CLINICAL

- 899** **A Phase I Study of Topotecan, Carboplatin and the PARP Inhibitor Veliparib in Acute Leukemias, Aggressive Myeloproliferative Neoplasms, and Chronic Myelomonocytic Leukemia**  
Keith W. Pratz, Michelle A. Rudek, Ivana Gojo, Mark R. Litzow, Michael A. McDevitt, Jiuping Ji, Larry M. Karnitz, James G. Herman, Robert J. Kinders, B. Douglas Smith, Steven D. Gore, Hetty E. Carraway, Margaret M. Showel, Douglas E. Gladstone, Mark J. Levis, Hua-Ling Tsai, Gary Rosner, Alice Chen, Scott H. Kaufmann, and Judith E. Karp

- 908** **First-in-Human Study Testing a New Radioenhancer Using Nanoparticles (NBTXR3) Activated by Radiation Therapy in Patients with Locally Advanced Soft Tissue Sarcomas**  
Sylvie Bonvalot, Cécile Le Pechoux, Thierry De Baere, Guy Kantor, Xavier Buy, Eberhard Stoeckle, Philippe Terrier, Paul Sargos, Jean Michel Coindre, Nathalie Lassau, Rafik Ait Sarkouh, Mikaela Dimitriu, Elsa Borghi, Laurent Levy, Eric Deutsch, and Jean-Charles Soria

- 918** **Genotype-Guided Dosing Study of FOLFIRI plus Bevacizumab in Patients with Metastatic Colorectal Cancer**  
Giuseppe Toffoli, Manish R. Sharma, Elena Marangon, Bianca Posocco, Elizabeth Gray, Quan Mai, Angela Buonadonna, Blase N. Polite, Gianmaria Miolo, Gianna Tabaro, and Federico Innocenti

- 925** **Neoadjuvant Chemotherapy of Ovarian Cancer Results in Three Patterns of Tumor-Infiltrating Lymphocyte Response with Distinct Implications for Immunotherapy**  
Charlotte S. Lo, Sanaz Sanii, David R. Kroeger, Katy Milne, Aline Talhouk, Derek S. Chiu, Kurosh Rahimi, Patricia A. Shaw, Blaise A. Clarke, and Brad H. Nelson



- 935** **A Phase II Trial of Abiraterone Combined with Dutasteride for Men with Metastatic Castration-Resistant Prostate Cancer**  
Rana R. McKay, Lillian Werner, Elahe A. Mostaghel, Rosina Lis, Olga Voznesensky, Zhenwei Zhang, Brett T. Marck, Alvin M. Matsumoto, Liran Domachevsky, Katherine A. Zukotynski, Manoj Bhasin, Glenn J. Bubley, Bruce Montgomery, Philip W. Kantoff, Steven P. Balk, and Mary-Ellen Taplin

### PERSONALIZED MEDICINE AND IMAGING

- 946** **High-Risk Premenopausal Luminal A Breast Cancer Patients Derive no Benefit from Adjuvant Cyclophosphamide-based Chemotherapy: Results from the DBCG77B Clinical Trial**  
Torsten O. Nielsen, Maj-Brit Jensen, Samantha Burugu, Dongxia Gao, Charlotte L. Tykjaer Jørgensen, Eva Balslev, and Bent Ejlersen

- 954** **Complement-Regulatory Proteins CFHR1 and CFHR3 and Patient Response to Anti-CD20 Monoclonal Antibody Therapy**  
Laura M. Rogers, Sarah L. Mott, Brian J. Smith, Brian K. Link, Deniz Sahin, and George J. Weiner

# Table of Contents

- 962 Targeting Fibroblast Growth Factor Receptor 1 for Treatment of Soft-Tissue Sarcoma**  
Priya Chudasama, Marcus Renner, Melanie Straub, Sadaf S. Mughal, Barbara Hutter, Zeynep Kosaloglu, Ron Schweßinger, Matthias Scheffler, Ingo Alldinger, Simon Schimmack, Thorsten Persigehl, Carsten Kobe, Dirk Jäger, Christof von Kalle, Peter Schirmacher, Marie-Kristin Beckhaus, Stephan Wolf, Christoph Heining, Stefan Gröschel, Jürgen Wolf, Benedikt Brors, Wilko Weichert, Hanno Glimm, Claudia Scholl, Gunhild Mechtersheimer, Katja Specht, and Stefan Fröhling
- 974 c-Myc Alteration Determines the Therapeutic Response to FGFR Inhibitors**  
Hongyan Liu, Jing Ai, Aijun Shen, Yi Chen, Xinyi Wang, Xia Peng, Hui Chen, Yanyan Shen, Min Huang, Jian Ding, and Meiyu Geng
- 985 Molecular Profiling to Determine Clonality of Serial Magnetic Resonance Imaging/Ultrasound Fusion Biopsies from Men on Active Surveillance for Low-Risk Prostate Cancer**  
Ganesh S. Palapattu, Simpa S. Salami, Andi K. Cani, Daniel H. Hovelson, Lorena Lazo de la Vega, Kelly R. Vandenberg, Jarred V. Bratley, Chia-Jen Liu, Lakshmi P. Kunju, Jeffery S. Montgomery, Todd M. Morgan, Shyam Natarajan, Jiaoti Huang, Scott A. Tomlins, and Leonard S. Marks
- CANCER THERAPY: PRECLINICAL**
- 992 ABBV-399, a c-Met Antibody–Drug Conjugate that Targets Both *MET*–Amplified and c-Met–Overexpressing Tumors, Irrespective of *MET* Pathway Dependence**  
Jieyi Wang, Mark G. Anderson, Anatol Oleksijew, Kedar S. Vaidya, Erwin R. Boghaert, Lora Tucker, Qian Zhang, Edward K. Han, Joann P. Palma, Louie Naumovski, and Edward B. Reilly
- 1001 Drug-Driven Synthetic Lethality: Bypassing Tumor Cell Genetics with a Combination of AsiDNA and PARP Inhibitors**  
Wael Jdey, Sylvain Thierry, Christophe Russo, Flavien Devun, Muthana Al Abo, Patricia Noguez-Hellin, Jian-Sheng Sun, Emmanuel Barillot, Andrei Zinovyev, Inna Kuperstein, Yves Pommier, and Marie Dutreix
- 1012 Synergistic Drug Combinations with a CDK4/6 Inhibitor in T-cell Acute Lymphoblastic Leukemia**  
 Yana Pikman, Gabriela Alexe, Giovanni Roti, Amy Saur Conway, Andrew Furman, Emily S. Lee, Andrew E. Place, Sunkyu Kim, Chitra Saran, Rebecca Modiste, David M. Weinstock, Marian Harris, Andrew L. Kung, Lewis B. Silverman, and Kimberly Stegmaier  
*See related commentary, p. 873*
- 1025 Identification of CCR2 and CD180 as Robust Pharmacodynamic Tumor and Blood Biomarkers for Clinical Use with BRD4/BET Inhibitors**  
Tammie C. Yeh, Greg O'Connor, Philip Petteruti, Austin Dulak, Maureen Hattersley, J. Carl Barrett, and Huawei Chen
- 1036 Therapeutic Inhibition of the MDM2–p53 Interaction Prevents Recurrence of Adenoid Cystic Carcinomas**  
Felipe Nör, Kristy A. Warner, Zhaocheng Zhang, Gerson A. Acasigua, Alexander T. Pearson, Samuel A. Kerk, Joseph I. Helman, Manoel Sant'Ana Filho, Shaomeng Wang, and Jacques E. Nör
- 1049 Cell-Intrinsic Determinants of Ibrutinib-Induced Apoptosis in Chronic Lymphocytic Leukemia**  
Nisar A. Amin, Sriram Balasubramanian, Kamlai Saiya-Cork, Kerby Shedden, Nan Hu, and Sami N. Malek
- 1060 Patient-Derived Xenograft Establishment from Human Malignant Pleural Mesothelioma**  
Licun Wu, Ghassan Allo, Thomas John, Ming Li, Tetsuzo Tagawa, Isabelle Opitz, Masaki Anraku, Zhihong Yun, Melania Pintilie, Bethany Pitcher, Geoffrey Liu, Ron Feld, Michael R. Johnston, Marc de Perrot, and Ming-Sound Tsao
- 1068 TTI-621 (SIRP $\alpha$ Fc): A CD47-Blocking Innate Immune Checkpoint Inhibitor with Broad Antitumor Activity and Minimal Erythrocyte Binding**  
 Penka S. Petrova, Natasja Nielsen Viller, Mark Wong, Xinli Pang, Gloria H.Y. Lin, Karen Dodge, Vien Chai, Hui Chen, Vivian Lee, Violetta House, Noel T. Vigo, Debbie Jin, Tapfuma Mutukura, Marilyse Charbonneau, Tran Truong, Stephane Viau, Lisa D. Johnson, Emma Linderth, Eric L. Sievers, Saman Maleki Vareki, Rene Figueredo, Macarena Pampillo, James Koropatnick, Suzanne Trudel, Nathan Mbong, Liqing Jin, Jean C.Y. Wang, and Robert A. Uger
- 1080 Found in Translation: Maximizing the Clinical Relevance of Nonclinical Oncology Studies**  
Mary E. Spilker, Xiaoying Chen, Ravi Visswanathan, Chandra Vage, Shinji Yamazaki, Gang Li, Judy Lucas, Erica L. Bradshaw-Pierce, and Paolo Vicini


# Table of Contents

## BIOLOGY OF HUMAN TUMORS

- 1091** **miR-206 Inhibits Stemness and Metastasis of Breast Cancer by Targeting MKL1/IL11 Pathway**  
Ravand Samaeekia, Valery Adorno-Cruz, Jessica Bockhorn, Ya-Fang Chang, Simo Huang, Aleix Prat, Nahun Ha, Golam Kibria, Dezheng Huo, Hui Zheng, Rachel Dalton, Yuhao Wang, Grigoriy Y. Moskalenko, and Huiping Liu
- 1104** **Neddylation E2 UBE2F Promotes the Survival of Lung Cancer Cells by Activating CRL5 to Degrade NOXA via the K11 Linkage**  
Weihua Zhou, Jie Xu, Haomin Li, Ming Xu, Zhijian J. Chen, Wenyi Wei, Zhenqiang Pan, and Yi Sun

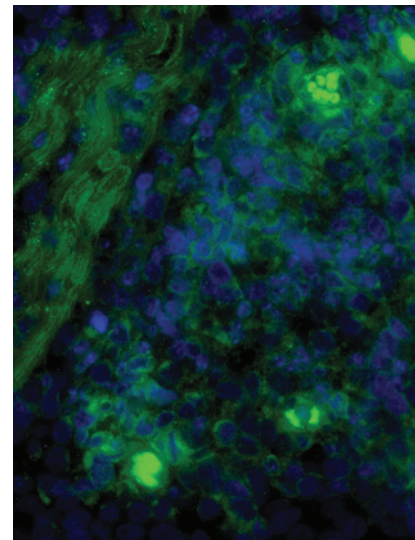
## CORRECTIONS

- 1117** **Correction: CpG Blocks Immunosuppression by Myeloid-Derived Suppressor Cells in Tumor-Bearing Mice**
- 1118** **Correction: Synergistic Activity of PARP Inhibition by Talazoparib (BMN 673) with Temozolomide in Pediatric Cancer Models in the Pediatric Preclinical Testing Program**

 **AC icon indicates Author Choice**  
For more information please visit [www.aacrjournals.org](http://www.aacrjournals.org)

## ABOUT THE COVER

The cover shows a section of a patient-derived xenograft tumor generated from an adenoid cystic carcinoma. Immunohistochemical staining shows strong expression of the cancer stem cell marker aldehyde dehydrogenase (ALDH) in close proximity to blood vessels and nerves. For details, see the article by Nör and colleagues on page 1036 of this issue



# Clinical Cancer Research

**23 (4)**

*Clin Cancer Res* 2017;23:871-1119.

**Updated version** Access the most recent version of this article at:  
<http://clincancerres.aacrjournals.org/content/23/4>

**E-mail alerts** [Sign up to receive free email-alerts](#) related to this article or journal.

**Reprints and Subscriptions** To order reprints of this article or to subscribe to the journal, contact the AACR Publications Department at [pubs@aacr.org](mailto:pubs@aacr.org).

**Permissions** To request permission to re-use all or part of this article, use this link <http://clincancerres.aacrjournals.org/content/23/4>. Click on "Request Permissions" which will take you to the Copyright Clearance Center's (CCC) Rightslink site.