

## SPECIAL FEATURES

## Highlights of This Issue 5491

## CCR Translations

**5493** Neoantigens in Ovarian Cancer: Embarrassment of Riches or Needles in a Haystack?

Iain A. McNeish

*See related article, p. 5562***5496** Forestalling BRAF-Inhibitor Resistance in a Shocking Way

Ryan J. Sullivan

*See related article, p. 5516***5499** ERBBal Remedies: Combination Therapy for EGFR-mutant Lung Cancers

Pang-Dian Fan and Helena A. Yu

*See related article, p. 5610*

## Review

**5502** Novel Approaches to Acute Myeloid Leukemia Immunotherapy

Ofriat Beyar-Katz and Saar Gill

## CLINICAL TRIALS: TARGETED THERAPY

**5516** Combined BRAF and HSP90 Inhibition in Patients with Unresectable BRAF<sup>V600E</sup>-Mutant Melanoma

Zeynep Eroglu, Y. Ann Chen, Geoffrey T. Gibney, Jeffrey S. Weber, Ragini R. Kudchadkar, Nikhil I. Khushalani, Joseph Markowitz, Andrew S. Brohl, Leticia F. Tetteh, Howida Ramadan, Gina Arnone, Jiannong Li, Xiuhua Zhao, Ritin Sharma, Lancia N.F. Darville, Bin Fang, Inna Smalley, Jane L. Messina, John M. Koomen, Vernon K. Sondak, and Keiran S.M. Smalley

*See related commentary, p. 5496***5525** Phase Ib Study of Binimetinib with Paclitaxel in Patients with Platinum-Resistant Ovarian Cancer: Final Results, Potential Biomarkers, and Extreme Responders

Rachel N. Grisham, Kathleen N. Moore, Michael S. Gordon, Wael Harb, Gwendolyn Cody, Darragh F. Halpenny, Vicky Makker, and Carol A. Aghajanian

**5534** Sunitinib Prior to Planned Nephrectomy in Metastatic Renal Cell Carcinoma: Angiogenesis Biomarkers Predict Clinical Outcome in the Prospective Phase II PREINSUT Trial

Laetitia Mauge, Arnaud Mejean, Laure Fournier, Helena Pereira, Marie-Christine Etienne-Grimaldi, Emeline Levionnois, Armelle Caty, Sophie Abadie-Lacourtoisie, Stéphane Culine, Sylvestre Le Moulec, Claude Linassier, Christine Théodore, Alain Ravaut, Laurence Albiges, Abel Grine, Eric Tartour, Gérard Milano, Anne-Sophie Gille, Virginie Verkarre, Dominique Helley, and Stéphane Oudard, on behalf of the PREINSUT study group

**5543** Abemaciclib in Combination with Single-Agent Options in Patients with Stage IV Non-Small Cell Lung Cancer: A Phase Ib Study

Edward S. Kim, Karen Kelly, Luis G. Paz-Ares, Pilar Garrido, Shadia Jalal, Daruka Mahadevan, Martin Gutierrez, Mariano Provencio, Eric Schaefer, Monte Shaheen, Erica L. Johnston, P. Kellie Turner, Siva Rama Prasad Kambhampati, Richard Beckmann, Anwar Hossain, William J. John, and Jonathan W. Goldman

## CLINICAL TRIALS: IMMUNOTHERAPY

**5552** Phase I Trial of ALT-803, A Novel Recombinant IL15 Complex, in Patients with Advanced Solid Tumors

Kim Margolin, Chihiro Morishima, Vamsidhar Velcheti, Jeffrey S. Miller, Sylvia M. Lee, Ann W. Silk, Sherman G. Holtan, Andreanne M. Lacroix, Steven P. Fling, Judith C. Kaiser, Jack O. Egan, Monica Jones, Peter R. Rhode, Amy D. Rock, Martin A. Cheever, Hing C. Wong, and Marc S. Ernstoff


**5562** T-cell Responses to TP53 "Hotspot" Mutations and Unique Neoantigens Expressed by Human Ovarian Cancers


Drew C. Deniger, Anna Pasetto, Paul F. Robbins, Jared J. Gartner, Todd D. Prickett, Biman C. Paria, Parisa Malekzadeh, Li Jia, Rami Yossef, Michelle M. Langhan, John R. Wunderlich, David N. Danforth, Robert P.T. Somerville, and Steven A. Rosenberg

*See related commentary, p. 5493*

# Table of Contents

## PRECISION MEDICINE AND IMAGING


- 5574** Immunomarker Support Vector Machine Classifier for Prediction of Gastric Cancer Survival and Adjuvant Chemotherapeutic Benefit  
 Yuming Jiang, Jingjing Xie, Zhen Han, Wei Liu, Sujuan Xi, Lei Huang, Weicai Huang, Tian Lin, Liying Zhao, Yanfeng Hu, Jiang Yu, Qi Zhang, Tuanjie Li, Shirong Cai, and Guoxin Li


- 5585** SPOP-Mutated/CHD1-Deleted Lethal Prostate Cancer and Abiraterone Sensitivity  
 Gunther Boysen, Daniel N. Rodrigues, Pasquale Rescigno, George Seed, David Dolling, Ruth Riisnaes, Mateus Crespo, Zafeiris Zafeiriou, Semini Sumanasuriya, Diletta Bianchini, Joanne Hunt, Deirdre Moloney, Raquel Perez-Lopez, Nina Tunariu, Susana Miranda, Inês Figueiredo, Ana Ferreira, Rossitza Christova, Veronica Gil, Sara Aziz, Claudia Bertan, Flavia M. de Oliveira, Mark Atkin, Matthew Clarke, Jane Goodall, Adam Sharp, Theresa MacDonald, Mark A. Rubin, Wei Yuan, Christopher E. Barbieri, Suzanne Carreira, Joaquin Mateo, and Johann S. de Bono


- 5594** KIM-1 as a Blood-Based Marker for Early Detection of Kidney Cancer: A Prospective Nested Case-Control Study  
Chislaine Scelo, David C. Muller, Elio Riboli, Mattias Johansson, Amanda J. Cross, Paolo Vineis, Konstantinos K. Tsilidis, Paul Brennan, Heiner Boeing, Petra H.M. Peeters, Roel C.H. Vermeulen, Kim Overvad, H. Bas Bueno-de-Mesquita, Gianluca Severi, Vittorio Perduca, Marina Kvaskoff, Antonia Trichopoulou, Carlo La Vecchia, Anna Karakatsani, Domenico Palli, Sabina Sieri, Salvatore Panico, Elisabete Weiderpass, Torkjel M. Sandanger, Therese H. Nøst, Antonio Agudo, J. Ramón Quirós, Miguel Rodríguez-Barranco, Maria-Dolores Chirlaque, Timothy J. Key, Prateek Khanna, Joseph V. Bonventre, Venkata S. Sabbiseti, and Rupal S. Bhatt

- 5602** Impact of Emergent Circulating Tumor DNA RAS Mutation in Panitumumab-Treated Chemoresistant Metastatic Colorectal Cancer  
Tae Won Kim, Marc Peeters, Anne Thomas, Peter Gibbs, Kristina Hool, Jianqi Zhang, Agnes Lee Ang, Bruce Allen Bach, and Timothy Price

## TRANSLATIONAL CANCER MECHANISMS AND THERAPY

- 5610** A Combination of Approved Antibodies Overcomes Resistance of Lung Cancer to Osimertinib by Blocking Bypass Pathways  
 Donatella Romaniello, Luigi Mazzeo, Maicol Mancini, Ilaria Marrocco, Ashish Noronha, Matthew Kreitman, Swati Srivastava, Soma Ghosh, Moshit Lindzen, Tomer Meir Salame, Amir Onn, Jair Bar, and Yosef Yarden  
*See related commentary, p. 5499*

- 5622** Metformin Inhibits Prostate Cancer Progression by Targeting Tumor-Associated Inflammatory Infiltration  
 Qiuli Liu, Dali Tong, Gaolei Liu, Jie Gao, Lin-ang Wang, Jing Xu, Xingxia Yang, Qiubo Xie, Yiqiang Huang, Jian Pang, Luofu Wang, Yong He, Dianzheng Zhang, Qiang Ma, Weihua Lan, and Jun Jiang

- 5635** Single-Cell Analyses of Prostate Cancer Liquid Biopsies Acquired by Apheresis  
 Maryou B. Lambros, George Seed, Semini Sumanasuriya, Veronica Gil, Mateus Crespo, Mariane Fontes, Rob Chandler, Niven Mehra, Gemma Fowler, Berni Ebbs, Penny Flohr, Susana Miranda, Wei Yuan, Alan Mackay, Ana Ferreira, Rita Pereira, Claudia Bertan, Ines Figueiredo, Ruth Riisnaes, Daniel Nava Rodrigues, Adam Sharp, Jane Goodall, Gunther Boysen, Suzanne Carreira, Diletta Bianchini, Pasquale Rescigno, Zafeiris Zafeiriou, Joanne Hunt, Deirdre Moloney, Lucy Hamilton, Rui P. Neves, Joost Swennenhuis, Kiki Andree, Nikolas H. Stoecklein, Leon W.M.M. Terstappen, and Johann S. de Bono

- 5645** MELK Inhibition in Diffuse Intrinsic Pontine Glioma  
Michaël H. Meel, Mark C. de Gooijer, Miriam Guillén Navarro, Piotr Waranecki, Marjolein Breur, Levi C.M. Buil, Laurine E. Wedekind, Jos W.R. Twisk, Jan Koster, Rintaro Hashizume, Eric H. Raabe, Angel Montero Carcaboso, Marianna Bugiani, Olaf van Tellingen, Dannis G. van Vuurden, Gertjan J.L. Kaspers, and Esther Hulleman

- 5658** Increased Synthesis of MCL-1 Protein Underlies Initial Survival of EGFR-Mutant Lung Cancer to EGFR Inhibitors and Provides a Novel Drug Target  
Kyung-A Song, Yasuyuki Hosono, Crystal Turner, Sheeba Jacob, Timothy L. Lochmann, Yoshiko Murakami, Neha U. Patel, Jungoh Ham, Bin Hu, Krista M. Powell, Colin M. Coon, Brad E. Windle, Yuko Oya, Jennifer E. Koblinski, Hisashi Harada, Joel D. Levenson, Andrew J. Souers, Aaron N. Hata, Sosipatros Boikos, Yasushi Yatabe, Hiromichi Ebi, and Anthony C. Faber

- 5673** Clinically Relevant Cytotoxic Immune Cell Signatures and Clonal Expansion of T-Cell Receptors in High-Risk MYCN-Not-Amplified Human Neuroblastoma  
Jun S. Wei, Igor B. Kuznetsov, Shile Zhang, Young K. Song, Shahab Asgharzadeh, Sivasish Sindiri, Xinyu Wen, Rajesh Patidar, Sushma Najaraj, Ashley Walton, Jaime M. Guidry Auvil, Daniela S. Gerhard, Aysen Yuksel, Daniel Catchpoole, Stephen M. Hewitt, Paul M. Sondel, Robert Seeger, John M. Maris, and Javed Khan

# Table of Contents

- 5685** **Regulatory T Cells in Ovarian Cancer Are Characterized by a Highly Activated Phenotype Distinct from that in Melanoma**  
Aras Toker, Linh T. Nguyen, Simone C. Stone, S.Y. Cindy Yang, Sarah Rachel Katz, Patricia A. Shaw, Blaise A. Clarke, Danny Ghazarian, Ayman Al-Habeeb, Alexandra Easson, Wey L. Leong, David R. McCreedy, Michael Reedijk, Cynthia J. Guidos, Trevor J. Pugh, Marcus Q. Bernardini, and Pamela S. Ohashi
- 5697** **Activating Transcription Factor 4 Modulates TGF $\beta$ -Induced Aggressiveness in Triple-Negative Breast Cancer via SMAD2/3/4 and mTORC2 Signaling**  
Adrián González-González, Esperanza Muñoz-Muela, Juan A. Marchal, Francisca E. Cara, María P. Molina, Marina Cruz-Lozano, Gema Jiménez, Akanksha Verma, Alberto Ramírez, Wei Qian, Wen Chen, Anthony J. Kozielski, Olivier Elemento, María D. Martín-Salvago, Rafael J. Luque, Carmen Rosa-Garrido, David Landeira, María Quintana-Romero, Roberto R. Rosato, María A. García, Cesar L. Ramirez-Tortosa, Hanna Kim, Cristian Rodriguez-Aguayo, Gabriel Lopez-Berestein, Anil K. Sood, Jose A. Lorente, Pedro Sánchez-Rovira, Jenny C. Chang, and Sergio Granados-Principal
- 5710** **TP53, STK11, and EGFR Mutations Predict Tumor Immune Profile and the Response to Anti-PD-1 in Lung Adenocarcinoma**  
Jérôme Biton, Audrey Mansuet-Lupo, Nicolas Pécuchet, Marco Alifano, Hanane Ouakrim, Jennifer Arrondeau, Pascaline Boudou-Rouquette, François Goldwasser, Karen Leroy, Jeremy Goc, Marie Wislez, Claire Germain, Pierre Laurent-Puig, Marie-Caroline Dieu-Nosjean, Isabelle Cremer, Ronald Herbst, Hélène Blons, and Diane Damotte
- 5724** **Detection of Gastric Cancer with Novel Methylated DNA Markers: Discovery, Tissue Validation, and Pilot Testing in Plasma**  
Bradley W. Anderson, Yun-Suhk Suh, Boram Choi, Hyuk-Joon Lee, Tracy C. Yab, William R. Taylor, Brian A. Dukek, Calise K. Berger, Xiaoming Cao, Patrick H. Foote, Mary E. Devens, Lisa A. Boardman, John B. Kisiel, Douglas W. Mahoney, Seth W. Slettedahl, Hatim T. Allawi, Graham P. Lidgard, Thomas C. Smyrk, Han-Kwang Yang, and David A. Ahlquist
- 5735** **Radiation Followed by OX40 Stimulation Drives Local and Abscopal Antitumor Effects in an Anti-PD1-Resistant Lung Tumor Model**  
Sharareh Niknam, Hampartsoum B. Barsoumian, Jonathan E. Schoenhals, Heather L. Jackson, Niranjan Yanamandra, Mauricio S. Caetano, Ailin Li, Ahmed I. Younes, Alexandra Cadena, Taylor R. Cushman, Joe Y. Chang, Quynh N. Nguyen, Daniel R. Gomez, Adi Diab, John V. Heymach, Patrick Hwu, Maria Angelica Cortez, and James W. Welsh
- 5744** **Mutant LKB1 Confers Enhanced Radiosensitization in Combination with Trametinib in KRAS-Mutant Non-Small Cell Lung Cancer**  
Yifan Wang, Nan Li, Wen Jiang, Weiye Deng, Rui Ye, Cai Xu, Yawei Qiao, Amrisha Sharma, Ming Zhang, Mien-Chie Hung, and Steven H. Lin
- 5757** **Functions and Mechanisms of Tumor Necrosis Factor- $\alpha$  and Noncoding RNAs in Bone-Invasive Pituitary Adenomas**  
 Haibo Zhu, Jing Guo, Yutao Shen, Wei Dong, Hua Gao, Yazhou Miao, Chuzhong Li, and Yazhuo Zhang
- 5767** **Prognostic Impact of Residual HPV ctDNA Detection after Chemoradiotherapy for Anal Squamous Cell Carcinoma**  
Luc Cabel, Emmanuelle Jeannot, Ivan Bieche, Sophie Vacher, Celine Callens, Louis Bazire, Adeline Morel, Alice Bernard-Tessier, Walid Chemlali, Anne Schnitzler, Astrid Lièvre, Joelle Otz, Mathieu Minsat, Anne Vincent-Salomon, Jean-Yves Pierga, Bruno Buecher, Pascale Mariani, Charlotte Proudhon, François-Clément Bidard, and Wulfran Cacheux
- 5772** **LDHA in Neuroblastoma Is Associated with Poor Outcome and Its Depletion Decreases Neuroblastoma Growth Independent of Aerobic Glycolysis**  
Carmen Dorneburg, Matthias Fischer, Thomas F.E. Barth, Wolfgang Mueller-Klieser, Barbara Hero, Judith Gecht, Daniel R. Carter, Katleen de Preter, Benjamin Mayer, Lisa Christner, Frank Speleman, Glenn M. Marshall, Klaus-Michael Debatin, and Christian Beltinger



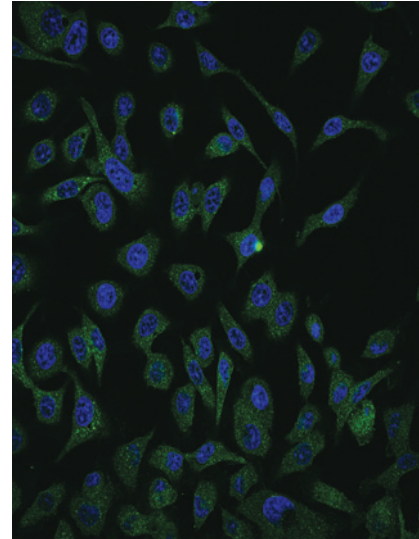
AC icon indicates AuthorChoice

For more information please visit [www.aacrjournals.org](http://www.aacrjournals.org)

# Table of Contents

## ABOUT THE COVER

The cover shows HER2 localization (in green) in erlotinib-resistant lung cancer cells (nuclei shown in blue). Cells were treated for 24 hours with a mixture of cetuximab (anti-EGFR), trastuzumab (anti-HER2), and osimertinib, a third-generation EGFR kinase inhibitor. Note the intracellular location of HER2, which normally localizes to the plasma membrane. For details, see the article by Romaniello and colleagues on page 5610 of this issue.



# Clinical Cancer Research

**24 (22)**

*Clin Cancer Res* 2018;24:5491-5783.

**Updated version** Access the most recent version of this article at:  
<http://clincancerres.aacrjournals.org/content/24/22>

**E-mail alerts** [Sign up to receive free email-alerts](#) related to this article or journal.

**Reprints and Subscriptions** To order reprints of this article or to subscribe to the journal, contact the AACR Publications Department at [pubs@aacr.org](mailto:pubs@aacr.org).

**Permissions** To request permission to re-use all or part of this article, use this link <http://clincancerres.aacrjournals.org/content/24/22>. Click on "Request Permissions" which will take you to the Copyright Clearance Center's (CCC) Rightslink site.