


## SPECIAL FEATURES

### Highlights of This Issue 1241

#### CCR Translations

- 1243** *RASA1/NF1*-Mutant Lung Cancer: Racing to the Clinic?  
Shunsuke Kitajima and David A. Barbie  
*See related article, p. 1436*
- 1246** CART Targeting of Solid Tumors: More Pieces to the Puzzle  
Michael Kalos  
*See related article, p. 1277*

#### Statistics in CCR

- 1248** Deep Learning–Based Multi-Omics Integration Robustly Predicts Survival in Liver Cancer  
 Kumardeep Chaudhary, Olivier B. Poirion, Liangqun Lu, and Lana X. Garmire

#### Review


- 1260** Primary and Acquired Resistance to Immune Checkpoint Inhibitors in Metastatic Melanoma  
Tuba N. Gide, James S. Wilmott, Richard A. Scolyer, and Georgina V. Long

#### Perspective

- 1271** Beyond Concurrent Chemoradiation: The Emerging Role of PD-1/PD-L1 Inhibitors in Stage III Lung Cancer  
Neal S. McCall, Adam P. Dicker, and Bo Lu

## CANCER THERAPY: CLINICAL

- 1277** Phase I Study of Chimeric Antigen Receptor–Modified T Cells in Patients with EGFR-Positive Advanced Biliary Tract Cancers  
Yelei Guo, Kaichao Feng, Yang Liu, Zhiqiang Wu, Hanren Dai, Qingming Yang, Yao Wang, Hejin Jia, and Weidong Han  
*See related commentary, p. 1246*

- 1287** Phase I Trial of M7824 (MSB0011359C), a Bifunctional Fusion Protein Targeting PD-L1 and TGF $\beta$ , in Advanced Solid Tumors  
 Julius Strauss, Christopher R. Heery, Jeffrey Schlom, Ravi A. Madan, Liang Cao, Zhigang Kang, Elizabeth Lamping, Jennifer L. Marté, Renee N. Donahue, Italia Grenga, Lisa Cordes, Olaf Christensen, Lisa Mahnke, Christoph Helwig, and James L. Gulley
- 1296** Safety, Activity, and Biomarkers of SHR-1210, an Anti-PD-1 Antibody, for Patients with Advanced Esophageal Carcinoma  
Jing Huang, Binghe Xu, Hongnan Mo, Weilong Zhang, Xuelian Chen, Dawei Wu, Dong Qu, Xingyuan Wang, Bo Lan, Beibei Yang, Pei Wang, Hongtu Zhang, Qing Yang, and Yuchen Jiao
- 1305** Identification of a Novel, EBV-Based Antibody Risk Stratification Signature for Early Detection of Nasopharyngeal Carcinoma in Taiwan  
Anna E. Coghil, Ruth M. Pfeiffer, Carla Proietti, Wan-Lun Hsu, Yin-Chu Chien, Lea Lekieffre, Lutz Krause, Andy Teng, Jocelyn Pablo, Kelly J. Yu PhD, Pei-Jen Lou MD, Cheng-Ping Wang, Zhiwei Liu, Chien-Jen Chen, Jaap Middeldorp, Jason Mulvenna, Jeff Bethony, Allan Hildesheim, and Denise L. Doolan
- 1315** p53-Reactive T Cells Are Associated with Clinical Benefit in Patients with Platinum-Resistant Epithelial Ovarian Cancer After Treatment with a p53 Vaccine and Gemcitabine Chemotherapy  
Nicola R. Hardwick, Paul Frankel, Christopher Ruel, Julie Kilpatrick, Weimin Tsai, Ferdinand Kos, Teodora Kaltcheva, Lucille Leong, Robert Morgan, Vincent Chung, Raechelle Tinsley, Melissa Eng, Sharon Wilczynski, Joshua D.I. Ellenhorn, Don J. Diamond, and Mihaela Cristea
- 1326** Evaluating Mismatch Repair Deficiency in Pancreatic Adenocarcinoma: Challenges and Recommendations  
Zishuo I. Hu, Jinru Shia, Zsofia K. Stadler, Anna M. Varghese, Marinela Capanu, Erin Salo-Mullen, Maeve A. Lowery, Luis A. Diaz Jr, Diana Mandelker, Kenneth H. Yu, Alice Zervoudakis, David P. Kelsen, Christine A. Iacobuzio-Donahue, David S. Klimstra, Leonard B. Saltz, Ibrahim H. Sahin, and Eileen M. O'Reilly



# Table of Contents


## PERSONALIZED MEDICINE AND IMAGING

- 1337** **Structural Alterations of MET Trigger Response to MET Kinase Inhibition in Lung Adenocarcinoma Patients**  
Dennis Plenker, Miriam Bertrand, Adrianus J. de Langen, Richard Riedel, Carina Lorenz, Andreas H. Scheel, Judith Müller, Johannes Brägelmann, Juliane Daßler-Plenker, Carsten Kobe, Thorsten Persigehl, Alexander Kluge, Thomas Wurdinger, Pepijn Schellen, Gunther Hartmann, Tobias Zacherle, Roopika Menon, Erik Thunnissen, Reinhard Büttner, Frank Griesinger, Jürgen Wolf, Lukas Heukamp, Martin L. Sos, and Johannes M. Heuckmann
- 1344** **Genomics-Driven Precision Medicine for Advanced Pancreatic Cancer: Early Results from the COMPASS Trial**  
Kyaw L. Aung, Sandra E. Fischer, Robert E. Denroche, Gun-Ho Jang, Anna Dodd, Sean Creighton, Bernadette Southwood, Sheng-Ben Liang, Dianne Chadwick, Amy Zhang, Grainne M. O’Kane, Hamzeh Albaba, Shari Moura, Robert C. Grant, Jessica K. Miller, Faridah Mbabaali, Danielle Pasternack, Ilinca M. Lungu, John M.S. Bartlett, Sangeet Ghai, Mathieu Lemire, Spring Holter, Ashton A. Connor, Richard A. Moffitt, Jen Jen Yeh, Lee Timms, Paul M. Krzyzanowski, Neesha Dhani, David Hedley, Faiyaz Notta, Julie M. Wilson, Malcolm J. Moore, Steven Gallinger, and Jennifer J. Knox
- 1355** **A Novel Method for Rapid Molecular Subgrouping of Medulloblastoma**  
Soledad Gómez, Alicia Garrido-García, Laura Garcia-Gerique, Isadora Lemos, Mariona Suñol, Carmen de Torres, Marta Kulis, Sara Pérez-Jaume, Ángel M. Carcaboso, Betty Luu, Mark W. Kieran, Nada Jabado, Alexey Kozlenkov, Stella Dracheva, Vijay Ramaswamy, Volker Hovestadt, Pascal Johann, David T.W. Jones, Stefan M. Pfister, Andrés Morales La Madrid, Ofelia Cruz, Michael D. Taylor, Jose-Ignacio Martin-Subero, Jaime Mora, and Cinzia Lavarino
- 1364** **Development and Validation of a Gene Signature for Patients with Head and Neck Carcinomas Treated by Postoperative Radio(chemo)therapy**  
Stefan Schmidt, Annett Linge, Alex Zwanenburg, Stefan Leger, Fabian Lohaus, Constanze Krenn, Steffen Appold, Volker Gudziol, Alexander Nowak, Cläre von Neubeck, Inge Tinhofer, Volker Budach, Ali Sak, Martin Stuschke, Panagiotis Balermipas, Claus Rödel, Hatice Bunea, Anca-Ligia Grosu, Amir Abdollahi, Jürgen Debus, Ute Ganswindt, Claus Belka, Steffi Pigorsch, Stephanie E. Combs, David Mönnich, Daniel Zips, Gustavo B. Baretton, Frank Buchholz, Michael Baumann, Mechthild Krause, and Steffen Löck for the DKTK-ROG

## CANCER THERAPY: PRECLINICAL

- 1375** **Statins Synergize with Hedgehog Pathway Inhibitors for Treatment of Medulloblastoma**  
Renata E. Gordon, Li Zhang, Suraj Peri, Yin-Ming Kuo, Fang Du, Brian L. Egleston, Jessica M. Y. Ng, Andrew J. Andrews, Igor Atsaturov, Tom Curran, and Zeng-Jie Yang
- 1389** **Epigenetic Reprogramming Strategies to Reverse Global Loss of 5-Hydroxymethylcytosine, a Prognostic Factor for Poor Survival in High-grade Serous Ovarian Cancer**  
Douglass W. Tucker, Christopher R. Getchell, Eric T. McCarthy, Anders W. Ohman, Naoko Sasamoto, Shuyun Xu, Joo Yeon Ko, Mamta Gupta, Amy Shafir, Jamie E. Medina, Jonathan J. Lee, Lauren A. MacDonald, Ammara Malik, Kathleen T. Hasselblatt, Wenjing Li, Hong Zhang, Samuel J. Kaplan, George F. Murphy, Michelle S. Hirsch, Joyce F. Liu, Ursula A. Matulonis, Kathryn L. Terry, Christine G. Lian, and Daniela M. Dinulescu
- 1402** **Therapeutic Challenge with a CDK 4/6 Inhibitor Induces an RB-Dependent SMAC-Mediated Apoptotic Response in Non-Small Cell Lung Cancer**  
Chellappagounder Thangavel, Ettickan Boopathi, Yi Liu, Christopher McNair, Alex Haber, Maryna Perepelyuk, Anshul Bhardwaj, Sankar Addya, Adam Ertel, Sunday Shoyele, Ruth Birbe, Joseph M. Salvino, Adam P. Dicker, Karen E. Knudsen, and Robert B. Den
- 1415** **CD47 Blockade as an Adjuvant Immunotherapy for Resectable Pancreatic Cancer**  
Alex D. Michaels, Timothy E. Newhook, Sara J. Adair, Sho Morioka, Bernadette J. Goudreau, Sarbajeet Nagdas, Matthew G. Mullen, Jesse B. Persily, Timothy N. J. Bullock, Craig L. Slingluff Jr, Kodi S. Ravichandran, J. Thomas Parsons, and Todd W. Bauer

## BIOLOGY OF HUMAN TUMORS

- 1426** **PIK3CA C2 Domain Deletions Hyperactivate Phosphoinositide 3-kinase (PI3K), Generate Oncogene Dependence, and Are Exquisitely Sensitive to PI3K $\alpha$  Inhibitors**  
 Sarah Croessmann, Jonathan H. Sheehan, Kyung-min Lee, Gregory Sliwoski, Jie He, Rebecca Nagy, David Riddle, Ingrid A. Mayer, Justin M. Balko, Richard Lanman, Vincent A. Miller, Lewis C. Cantley, Jens Meiler, and Carlos L. Arteaga

# Table of Contents

**1436** *RASA1* and *NF1* are Preferentially Co-Mutated and Define A Distinct Genetic Subset of Smoking-Associated Non-Small Cell Lung Carcinomas Sensitive to MEK Inhibition

Takuo Hayashi, Patrice Desmeules, Roger S. Smith, Alexander Drilon, Romel Somwar, and Marc Ladanyi  
*See related commentary, p. 1243*

**1448** Loss-of-Function Mutations in Calcitonin Receptor (*CALCR*) Identify Highly Aggressive Glioblastoma with Poor Outcome

Jagriti Pal, Vikas Patil, Anupam Kumar, Kavneet Kaur, Chitra Sarkar, and Kumaravel Somasundaram

**1459** Clinical Utility of a *STAT3*-Regulated miRNA-200 Family Signature with Prognostic Potential in Early Gastric Cancer

Liang Yu, Di Wu, Hugh Gao, Jesse J. Balic, Anna Tsykin, Tae-Su Han, You Dong Liu, Catherine L. Kennedy, Ji Kun Li, Jie Qi Mao, Patrick Tan, Masanobu Oshima, Gregory J. Goodall, and Brendan J. Jenkins

**1473** RING-Finger Protein 6 Amplification Activates JAK/STAT3 Pathway by Modifying SHP-1 Ubiquitylation and Associates with Poor Outcome in Colorectal Cancer

Qian Liang, Dan Ma, Xiaoqiang Zhu, Zhenhua Wang, Tian-Tian Sun, Chaoqin Shen, Tingting Yan, Xianglong Tian, TaChung Yu, Fangfang Guo, JiaYin Tang, Yanwei Lin, Huimin Chen, Chao Zhou, Zhizheng Ge, Ming Zhong, Jinxian Chen, Qiang Liu, Zheng Wang, Jing-Yuan Fang, Haoyan Chen, and Jie Hong

**1486** Expanded Genomic Profiling of Circulating Tumor Cells in Metastatic Breast Cancer Patients to Assess Biomarker Status and Biology Over Time (CALGB 40502 and CALGB 40503, Alliance)

Mark Jesus M. Magbanua, Hope S. Rugo, Denise M. Wolf, Louai Hauranieh, Ritu Roy, Praveen Pendyala, Eduardo V. Sosa, Janet H. Scott, Jin Sun Lee, Brandelyn Pitcher, Terry Hyslop, William T. Barry, Steven J. Isakoff, Maura Dickler, Laura van't Veer, and John W. Park

**1500** *ESR1* Methylation: A Liquid Biopsy-Based Epigenetic Assay for the Follow-up of Patients with Metastatic Breast Cancer Receiving Endocrine Treatment

Sophia Mastoraki, Areti Strati, Eleni Tzanikou, Maria Chimonidou, Eleni Politaki, Alexandra Voutsina, Amanda Psyrris, Vassilis Georgoulas, and Evi Lianidou

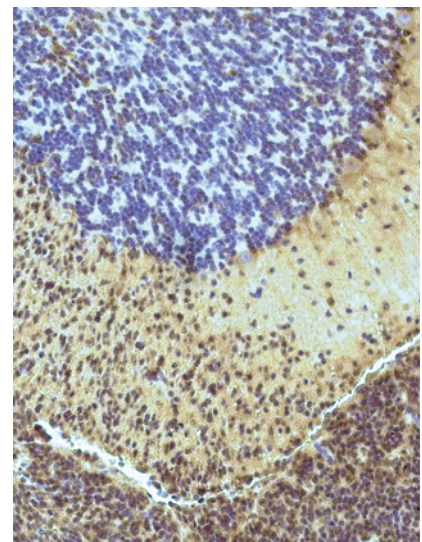


AC icon indicates AuthorChoice

For more information please visit [www.aacrjournals.org](http://www.aacrjournals.org)

## ABOUT THE COVER

The cover shows a section of a normal cerebellar lobe (left) and adjacent medulloblastoma tissue (right) in a mouse brain. Immunohistochemical staining shows that tumor cells highly express SREBP2 (sterol regulatory element-binding protein 2), a protein involved in the regulation of cholesterol homeostasis. For details, see the article by Gordon and colleagues on page 1375 of this issue.



# Clinical Cancer Research

**24 (6)**

*Clin Cancer Res* 2018;24:1241-1510.

**Updated version** Access the most recent version of this article at:  
<http://clincancerres.aacrjournals.org/content/24/6>

**E-mail alerts** [Sign up to receive free email-alerts](#) related to this article or journal.

**Reprints and Subscriptions** To order reprints of this article or to subscribe to the journal, contact the AACR Publications Department at [pubs@aacr.org](mailto:pubs@aacr.org).

**Permissions** To request permission to re-use all or part of this article, use this link <http://clincancerres.aacrjournals.org/content/24/6>. Click on "Request Permissions" which will take you to the Copyright Clearance Center's (CCC) Rightslink site.