

## SPECIAL FEATURES

## Highlights of This Issue 1511

## CCR Translations

- 1513** Personalized Chemosensitivity Assays for Mesothelioma: Are They Worth the Effort?  
Thomas John and Puey Ling Chia  
*See related article, p. 1761*


- 1516** Glycogen Phosphorylase: A Novel Biomarker in Doxorubicin-Induced Cardiac Injury  
Yueming Zhu and David Gius  
*See related article, p. 1644*

## Review

- 1518** Immunotherapy of Hepatocellular Carcinoma: Facts and Hopes  
Mercedes Iñárraegui, Ignacio Melero, and Bruno Sangro

## CANCER THERAPY: CLINICAL

- 1525** A First-in-Human Phase I Study of Subcutaneous Outpatient Recombinant Human IL15 (rhIL15) in Adults with Advanced Solid Tumors  
Jeffrey S. Miller, Chihiro Morishima, Douglas G. McNeel, Manish R. Patel, Holbrook E.K. Kohrt, John A. Thompson, Paul M. Sondel, Heather A. Wakelee, Mary L. Disis, Judith C. Kaiser, Martin A. Cheever, Howard Streicher, Steven P. Creekmore, Thomas A. Waldmann, and Kevin C. Conlon
- 1536** First-in-Human Phase I Study of Single-agent Vanucizumab, A First-in-Class Bispecific Anti-Angiopoietin-2/Anti-VEGF-A Antibody, in Adult Patients with Advanced Solid Tumors  
Manuel Hidalgo, Maria Martínez-García, Christophe Le Tourneau, Christophe Massard, Elena Garralda, Valentina Boni, Alvaro Taus, Joan Albanell, Marie-Paule Sablin, Marie Alt, Ratislav Bahleda, Andrea Varga, Christophe Boetsch, Izolda Franjkovic, Florian Heil, Angelika Lahr, Katharina Lechner, Anthony Morel, Tapan Nayak, Simona Rossomanno, Kevin Smart, Kay Stubenrauch, and Oliver Krieter

- 1546** Genomic Correlates of Response to Everolimus in Aggressive Radioiodine-refractory Thyroid Cancer: A Phase II Study  
 Glenn J. Hanna, Naifa L. Busaidy, Nicole G. Chau, Lori J. Wirth, Justine A. Barletta, Antonio Calles, Robert I. Haddad, Stefan Kraft, Maria E. Cabanillas, Guilherme Rabinowits, Anne O'Neill, Sewanti A. Limaye, Erik K. Alexander, Francis D. Moore Jr, Krystof Misiwkeiwicz, Tom Thomas, Matthew Nehs, Ellen Marqusee, Stephanie L. Lee, Pasi A. Jänne, and Jochen H. Lorch

- 1554** Immune Biomarkers Predictive for Disease-Free Survival with Adjuvant Sunitinib in High-Risk Locoregional Renal Cell Carcinoma: From Randomized Phase III S-TRAC Study  
Daniel J. George, Jean-François Martini, Michael Staehler, Robert J. Motzer, Ahmed Magheli, Bernard Escudier, Paola Gerletti, Sherry Li, Michelle Casey, Brigitte Laguerre, Hardev S. Pandha, Allan J. Pantuck, Anup Patel, Maria J. Lechuga, and Alain Ravaud

## PERSONALIZED MEDICINE AND IMAGING

- 1562** Spatially Resolved and Quantitative Analysis of VISTA/PD-1H as a Novel Immunotherapy Target in Human Non-Small Cell Lung Cancer  
Franz Villarroel-Espindola, Xiaoqing Yu, Ila Datar, Nikita Mani, Miguel Sanmamed, Vamsidhar Velcheti, Konstantinos Syrigos, Maria Toki, Hongyu Zhao, Lieping Chen, Roy S. Herbst, and Kurt A. Schalper
- 1574** Thy1-Targeted Microbubbles for Ultrasound Molecular Imaging of Pancreatic Ductal Adenocarcinoma  
Lotfi Abou-Elkacem, Huaijun Wang, Sayan M. Chowdhury, Richard H. Kimura, Sunitha V. Bachawal, Sanjiv S. Gambhir, Lu Tian, and Jürgen K. Willmann
- 1586** Molecular Markers Increase Precision of the European Association of Urology Non-Muscle-Invasive Bladder Cancer Progression Risk Groups  
Kim E.M. van Kessel, Kirstin A. van der Keur, Lars Dyrskjøt, Ferran Algaba, Naeromy Y.C. Welvaart, Willemien Beukers, Ulrika Segersten, Bastian Keck, Tobias Maurer, Tatjana Simic, Marcus Horstmann, Marc-Oliver Grimm, Gregers G. Hermann, Karin Mogensen, Arndt Hartmann, Niels Harving, Astrid C. Petersen, Jørgen B. Jensen, Kerstin Junker, Joost L. Boormans, Francisco X. Real, Núria Malats, Per-Uno Malmström, Torben F. Ørntoft, and Ellen C. Zwarthoff

# Table of Contents

- 1594** High Yield of Pathogenic Germline Mutations Causative or Likely Causative of the Cancer Phenotype in Selected Children with Cancer  
Illja J. Diets, Esmé Waanders, Marjolijn J. Ligtenberg, Diede A.G. van Bladel, Eveline J. Kamping, Peter M. Hoogerbrugge, Saskia Hopman, Maran J. Olderode-Berends, Erica H. Gerkes, David A. Koolen, Carlo Marcelis, Gijs W. Santen, Martine J. van Belzen, Dylan Mordaunt, Lesley McGregor, Elizabeth Thompson, Antonis Kattamis, Agata Pastorczak, Wojciech Mlynarski, Denisa Ilencikova, Anneke Vulto-van Silfhout, Thatjana Gardeitchik, Eveline S. de Bont, Jan Loeffen, Anja Wagner, Arjen R. Mensenkamp, Roland P. Kuiper, Nicoline Hoogerbrugge, and Marjolijn C. Jongmans

## CANCER THERAPY: PRECLINICAL

- 1604** Flt-3L Expansion of Recipient CD8 $\alpha^+$  Dendritic Cells Deletes Alloreactive Donor T Cells and Represents an Alternative to Posttransplant Cyclophosphamide for the Prevention of GVHD  
Kate A. Markey, Rachel D. Kuns, Daniel J. Browne, Kate H. Gartlan, Renee J. Robb, J. Paulo Martins, Andrea S. Henden, Simone A. Minnie, Melody Cheong, Motoko Koyama, Mark J. Smyth, Raymond J. Steptoe, Gabrielle T. Belz, Thomas Brocker, Mariapia A. Degli-Esposti, Steven W. Lane, and Geoffrey R. Hill
- 1617** Repurposing Tin Mesoporphyrin as an Immune Checkpoint Inhibitor Shows Therapeutic Efficacy in Preclinical Models of Cancer  
Tamara Muliaditan, James W. Opzoomer, Jonathan Caron, Mary Okesola, Paris Kosti, Sharanpreet Lall, Mieke Van Hemelrijck, Francesco Dazzi, Andrew Tutt, Anita Grigoriadis, Cheryl E. Gillett, Stephen F. Madden, Joy M. Burchell, Shahram Kordasti, Sandra S. Diebold, James F. Spicer, and James N. Arnold
- 1629** RNF126 as a Biomarker of a Poor Prognosis in Invasive Breast Cancer and CHEK1 Inhibitor Efficacy in Breast Cancer Cells  
Xiaosong Yang, You Pan, Zhaojun Qiu, Zhanwen Du, Yao Zhang, Pengyan Fa, Shashank Gorityala, Shanhuai Ma, Shunqiang Li, Ceshi Chen, Hongbing Wang, Yan Xu, Chunhong Yan, Keri Ruth, Zhefu Ma, and Junran Zhang
- 1644** Extracellular Vesicles Released by Cardiomyocytes in a Doxorubicin-Induced Cardiac Injury Mouse Model Contain Protein Biomarkers of Early Cardiac Injury  
Chontida Yarana, Dustin Carroll, Jing Chen, Luksana Chaiswing, Yanming Zhao, Teresa Noel, Michael Alstott, Younsoo Bae, Emily V. Dressler, Jeffrey A. Moscow, D. Allan Butterfield, Haining Zhu, and Daret K. St. Clair  
*See related commentary, p. 1516*

- 1654** Establishing a Preclinical Multidisciplinary Board for Brain Tumors  
Birgit V. Nimmervoll, Nidal Boulos, Brandon Bianski, Jason Dapper, Michael DeCuyper, Anang Shelat, Sabrina Terranova, Hope E. Terhune, Amar Gajjar, Yogesh T. Patel, Burgess B. Freeman, Arzu Onar-Thomas, Clinton F. Stewart, Martine F. Roussel, R. Kipling Guy, Thomas E. Merchant, Christopher Calabrese, Karen D. Wright, and Richard J. Gilbertson

- 1667** Development and Preclinical Validation of a Cysteine Knottin Peptide Targeting Integrin  $\alpha\beta_6$  for Near-infrared Fluorescent-guided Surgery in Pancreatic Cancer  
Willemieke S. Tummers, Richard H. Kimura, Lotfi Abou-Elkacem, C. Beinat, Alexander L. Vahrmeijer, Rutger-Jan Swijnenburg, Juergen K. Willmann, and Sanjiv S. Gambhir

- 1677** Survival of Cancer Stem-Like Cells Under Metabolic Stress via CaMK2 $\alpha$ -mediated Upregulation of Sarco/Endoplasmic Reticulum Calcium ATPase Expression  
Ki Cheong Park, Seung Won Kim, Jeong Yong Jeon, A. Ra Jo, Hye Ji Choi, Jungmin Kim, Hyun Gyu Lee, Yonjung Kim, Gordon B. Mills, Sung Hoon Noh, Min Goo Lee, Eun Sung Park, and Jae-Ho Cheong

- 1691** Pathways Impacted by Genomic Alterations in Pulmonary Carcinoid Tumors  
Michael K. Asiedu, Charles F. Thomas Jr, Jie Dong, Sandra C. Schulte, Prasiddha Khadka, Zhifu Sun, Farhad Kosari, Jin Jen, Julian Molina, George Vasmatzis, Ray Kuang, Marie Christine Aubry, Ping Yang, and Dennis A. Wigle

## BIOLOGY OF HUMAN TUMORS

- 1705**  IDH1/2 Mutations Sensitize Acute Myeloid Leukemia to PARP Inhibition and This Is Reversed by IDH1/2-Mutant Inhibitors  
Remco J. Molenaar, Tomas Radivoyevitch, Yasunobu Nagata, Mohammed Khurshed, Bartolomiej Przychodzen, Hideki Makishima, Mingjiang Xu, Fonnnet E. Bleeker, Johanna W. Wilmink, Hetty E. Carraway, Sudipto Mukherjee, Mikkael A. Sekeres, Cornelis J.F. van Noorden, and Jaroslaw P. Maciejewski

# Table of Contents

**1716** Evolution of Cytogenetically Normal Acute Myeloid Leukemia During Therapy and Relapse:



**An Exome Sequencing Study of 50 Patients**

Philipp A. Greif, Luise Hartmann, Sebastian Vosberg, Sophie M. Stief, Raphael Mattes, Ines Hellmann, Klaus H. Metzeler, Tobias Herold, Stefanos A. Bamopoulos, Paul Kerbs, Vindi Jurinovic, Daniela Schumacher, Friederike Pastore, Kathrin Bräundl, Evelyn Zellmeier, Bianka Ksienzyk, Nikola P. Konstandin, Stephanie Schneider, Alexander Graf, Stefan Krebs, Helmut Blum, Martin Neumann, Claudia D. Baldus, Stefan K. Bohlander, Stephan Wolf, Dennis Görlich, Wolfgang E. Berdel, Bernhard J. Wörmann, Wolfgang Hiddemann, and Karsten Spiekermann

**1727** High-Risk *TP53* Mutations Are Associated with Extranodal Extension in Oral Cavity Squamous Cell Carcinoma

Vlad C. Sandulache, Chieko Michikawa, Pranav Kataria, Frederico O. Gleber-Netto, Diana Bell, Sanchit Trivedi, Xiayu Rao, Jing Wang, Mei Zhao, Samar Jasser, Jeffrey N. Myers, and Curtis R. Pickering

**1734** Personalized RNA Medicine for Pancreatic Cancer



Maud-Emmanuelle Gilles, Liangliang Hao, Ling Huang, Rajesha Rupaimoole, Pedro P. Lopez-Casas, Emilia Pulver, Jong Cheol Jeong, Senthil K. Muthuswamy, Manuel Hidalgo, Sangeeta N. Bhatia, and Frank J. Slack

**1748** Downregulation of DNMT3A by miR-708-5p Inhibits Lung Cancer Stem Cell-like Phenotypes through Repressing Wnt/ $\beta$ -catenin Signaling

Tianchi Liu, Xiaoping Wu, Tong Chen, Zewei Luo, and Xiaohua Hu

**1761** Chemical Profiling of Primary Mesothelioma Cultures Defines Subtypes with Different Expression Profiles and Clinical Responses

Laurel M. Schunselaar, Josine M.M.F. Quispel-Janssen, Yongsoo Kim, Constantine Alifrangis, Wilbert Zwart, Paul Baas, and Jacques Neeftjes  
*See related commentary, p. 1513*

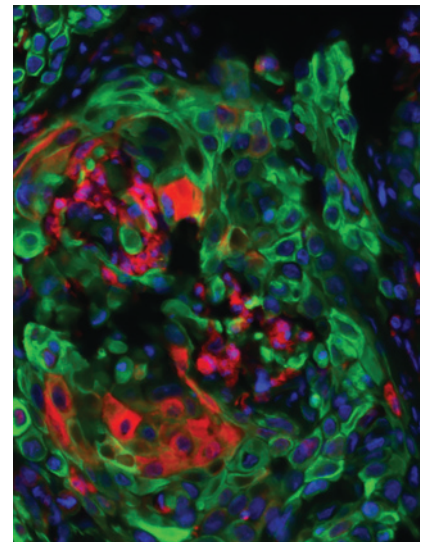


AC icon indicates AuthorChoice

For more information please visit [www.aacrjournals.org](http://www.aacrjournals.org)

## ABOUT THE COVER

The cover depicts multiplexed immunofluorescence showing expression of VISTA (red channel) in cytokeratin-positive lung squamous carcinoma cells (green channel) and in cytokeratin-negative stromal cells. Nuclei are highlighted with 4',6-diamidino-2-phenylindole (DAPI, blue channel). For details, see the article by Villarroel-Espindola and colleagues on page 1562 of this issue.



# Clinical Cancer Research

**24 (7)**

*Clin Cancer Res* 2018;24:1511-1770.

**Updated version** Access the most recent version of this article at:  
<http://clincancerres.aacrjournals.org/content/24/7>

**E-mail alerts** [Sign up to receive free email-alerts](#) related to this article or journal.

**Reprints and Subscriptions** To order reprints of this article or to subscribe to the journal, contact the AACR Publications Department at [pubs@aacr.org](mailto:pubs@aacr.org).

**Permissions** To request permission to re-use all or part of this article, use this link <http://clincancerres.aacrjournals.org/content/24/7>. Click on "Request Permissions" which will take you to the Copyright Clearance Center's (CCC) Rightslink site.