

SPECIAL FEATURES

Highlights of This Issue 3471

CCR Translations

3473 About Face: Molecular Aberrations in Head and Neck Mucosal MelanomasAlexander N. Shoushtari
*See related article, p. 3548***3476** A Novel Autocrine CXCL14/ACKR2 Axis: The Achilles' Heel of Cancer Metastasis?Qian Zhang, Nianxin Zhou, Wei Wang, and Shengtao Zhou
See related article, p. 3702

Review

3479 Bad to the Bone: The Role of the Insulin-Like Growth Factor Axis in Osseous Metastasis

Guillaume Rieunier, Xiaoning Wu, Valentine M. Macaulay, Adrian V. Lee, Ulrike Weyer-Czernilofsky, and Thomas Bogenrieder

CLINICAL TRIALS: TARGETED THERAPY

3486 Surufatinib in Advanced Well-Differentiated Neuroendocrine Tumors: A Multicenter, Single-Arm, Open-Label, Phase Ib/II Trial

Jianming Xu, Jie Li, Chunmei Bai, Nong Xu, Zhiwei Zhou, Zhiping Li, Caicun Zhou, Ru Jia, Ming Lu, Yuejuan Cheng, Chenyu Mao, Wei Wang, Ke Cheng, Chunxia Su, Ye Hua, Chuan Qi, Jing Li, Wei Wang, Ke Li, Qiaoling Sun, Yongxin Ren, and Weiguo Su

CLINICAL TRIALS: IMMUNOTHERAPY

3495 Phase I Immunotherapy Trial with Two Chimeric HER-2 B-Cell Peptide Vaccines Emulsified in Montanide ISA 720VG and Nor-MDP Adjuvant in Patients with Advanced Solid Tumors

Tanios Bekaii-Saab, Robert Wesolowski, Daniel H. Ahn, Christina Wu, Amir Mortazavi, Maryam Lustberg, Bhuvaneshwari Ramaswamy, Jeffrey Fowler, Lai Wei, Jay Overholser, and Pravin T.P. Kaumaya

3508 Phase 1 Open-Label, Multicenter Study of First-in-Class ROR γ Agonist LYC-55716 (Cintiroragon): Safety, Tolerability, and Preliminary Evidence of Antitumor Activity

Devalingam Mahalingam, Judy S. Wang, Erika P. Hamilton, John Sarantopoulos, John Nemunaitis, Garry Weems, Laura Carter, Xiao Hu, Marshall Schreeder, and H. Jeffrey Wilkins

PRECISION MEDICINE AND IMAGING

3517 ⁸⁹Zr-labeled Bispecific T-cell Engager AMG 211 PET Shows AMG 211 Accumulation in CD3-rich Tissues and Clear, Heterogeneous Tumor Uptake

Kirsten L. Moek, Stijn J.H. Waaijer, Iris C. Kok, Frans V. Suurs, Adrienne H. Brouwers, C. Willemien Menke-van der Houven van Oordt, Thijs T. Wind, Jourik A. Gietema, Carolien P. Schröder, Shekar V.K. Mahesh, Annelies Jorritsma-Smit, Marjolijn N. Lub-de Hooge, Rudolf S.N. Fehrmann, Derk Jan A. de Groot, and Elisabeth G.E. de Vries

3528 The Immune Subtypes and Landscape of Squamous Cell Carcinoma

Bailiang Li, Yi Cui, Dhanya K. Nambiar, John B. Sunwoo, and Ruijiang Li

3538 Radiomics of Multiparametric MRI for Pretreatment Prediction of Pathologic Complete Response to Neoadjuvant Chemotherapy in Breast Cancer: A Multicenter Study

Zhenyu Liu, Zhuolin Li, Jinrong Qu, Renzhi Zhang, Xuezhi Zhou, Longfei Li, Kai Sun, Zhenchao Tang, Hui Jiang, Hailiang Li, Qianqian Xiong, Yingying Ding, Xinming Zhao, Kun Wang, Zaiyi Liu, and Jie Tian

3548 Analysis of Mucosal Melanoma Whole-Genome Landscapes Reveals Clinically Relevant Genomic AberrationsRong Zhou, Chaoji Shi, Wenjie Tao, Jiang Li, Jing Wu, Yong Han, Guizhu Yang, Ziyue Gu, Shengming Xu, Yujue Wang, Lizhen Wang, Yanan Wang, Guoyu Zhou, Chenping Zhang, Zhiyuan Zhang, and Shuyang Sun
*See related commentary, p. 3473***3561** CD47-Targeted Near-Infrared Photoimmunotherapy for Human Bladder Cancer

Bernhard Kiss, Nynke S. van den Berg, Robert Ertsey, Kelly McKenna, Kathleen E. Mach, Chiyuan Amy Zhang, Jens-Peter Volkmer, Irving L. Weissman, Eben L. Rosenthal, and Joseph C. Liao

Table of Contents

- 3572** Hyperspectral Imaging for Resection Margin Assessment during Cancer Surgery
Esther Kho, Lisanne L. de Boer, Koen K. Van de Vijver, Frederieke van Duijnhoven, Marie-Jeanne T.F.D. Vrancken Peeters, Henricus J.C.M. Sterenborg, and Theo J.M. Ruers
- 3581** Circulating Tumor DNA in HER2-Amplified Breast Cancer: A Translational Research Substudy of the NeoALTO Phase III Trial
Françoise Rothé, Maria Joao Silva, David Venet, Christine Campbell, Ian Bradburry, Ghizlane Rouas, Evandro de Azambuja, Marion Maetens, Debora Fumagalli, Vanessa Rodrik-Outmezguine, Serena Di Cosimo, Daniela Rosa, Stephen Chia, Andrew Wardley, Takayuki Ueno, Wolfgang Janni, Jens Huober, Jose Baselga, Martine Piccart, Sherene Loi, Christos Sotiriou, Sarah-Jane Dawson, and Michail Ignatiadis

TRANSLATIONAL CANCER MECHANISMS AND THERAPY


- 3589** PAK Kinase Inhibition Has Therapeutic Activity in Novel Preclinical Models of Adult T-Cell Leukemia/Lymphoma
Elaine Y. Chung, Yun Mai, Urvi A. Shah, Yongqiang Wei, Elise Ishida, Keisuke Kataoka, Xiaoxin Ren, Kith Pradhan, Boris Bartholdy, Xiaolei Wei, Yiyu Zou, Jinghang Zhang, Seishi Ogawa, Ulrich Steidl, Xingxing Zang, Amit Verma, Murali Janakiram, and B. Hilda Ye
- 3602** HERC3-Mediated SMAD7 Ubiquitination Degradation Promotes Autophagy-Induced EMT and Chemoresistance in Glioblastoma
Hong Li, Junjie Li, Lei Chen, Songtao Qi, Shishi Yu, Zhijian Weng, Ziyou Hu, Qiang Zhou, Zong Xin, Linyong Shi, Liyi Ma, Annie Huang, and Yuntao Lu
- 3617** EPB41L5 Mediates TGF β -Induced Metastasis of Gastric Cancer
Mi-Hyeon Jeong, Soo-Yeon Park, Seung-Hyun Lee, JaeSung Seo, Jung-Yoon Yoo, Seung-Ho Park, Mi Jeong Kim, SooYeon Lee, Subhin Jang, Hyo-Kyoung Choi, Jae Eun Lee, Su-Jin Shin, Kyung-Chul Choi, Jae-Ho Cheong, and Ho-Geun Yoon
- 3630** A Novel mTORC1/2 Inhibitor (MTI-31) Inhibits Tumor Growth, Epithelial–Mesenchymal Transition, Metastases, and Improves Antitumor Immunity in Preclinical Models of Lung Cancer
Qianwen Zhang, Yan Zhang, Yaqing Chen, Jianchang Qian, Xuesai Zhang, and Ker Yu

- 3643** Glioblastoma-Derived IL6 Induces Immunosuppressive Peripheral Myeloid Cell PD-L1 and Promotes Tumor Growth
Jonathan B. Lamano, Jason Balquidera Lamano, Yuping D. Li, Joseph D. DiDomenico, Winward Choy, Dorina Veliceasa, Daniel E. Oyon, Shayan Fakurnejad, Leonel Ampie, Kartik Kesavabhotla, Rajwant Kaur, Gurvinder Kaur, Dauren Biyashev, Dusten J. Unruh, Craig M. Horbinski, C. David James, Andrew T. Parsa, and Orin Bloch
- 3658** Neddylation Inactivation Facilitates FOXO3a Nuclear Export to Suppress Estrogen Receptor Transcription and Improve Fulvestrant Sensitivity
Xiaoqing Jia, Chunjie Li, Lihui Li, Xiaoli Liu, Lisha Zhou, Wenjuan Zhang, Shuaishuai Ni, Yun Lu, Li Chen, Lak Shin Jeong, Jinha Yu, Yingjian Zhang, Jianping Zhang, Simin He, Xin Hu, Hefen Sun, Keda Yu, Guangyu Liu, Hu Zhao, Yanmei Zhang, Lijun Jia, and Zhi-Ming Shao
- 3673** Long Noncoding RNA MPRL Promotes Mitochondrial Fission and Cisplatin Chemosensitivity via Disruption of Pre-miRNA Processing
Tian Tian, Xiaobin Lv, Guokai Pan, Yingjuan Lu, Weixiong Chen, Wang He, Xinyuan Lei, Hanqing Zhang, Mo Liu, Sheng Sun, Zhanpeng Ou, Xinyu Lin, Lei Cai, Lile He, Zhiming Tu, Xinhui Wang, Bakhos A. Tannous, Soldano Ferrone, Jinsong Li, and Song Fan
- 3689** Multi-omics Integration Analysis Robustly Predicts High-Grade Patient Survival and Identifies CPT1B Effect on Fatty Acid Metabolism in Bladder Cancer
Venkatrao Vantaku, Jianrong Dong, Chandrashekar R. Ambati, Dimuthu Perera, Sri Ramya Donepudi, Chandra Sekhar Amara, Vasanta Putluri, Shiva Shankar Ravi, Matthew J. Robertson, Danthasinghe Waduge Badrajee Piyarathna, Mariana Villanueva, Friedrich-Carl von Rundstedt, Balasubramanyam Karanam, Leomar Y. Ballester, Martha K. Terris, Roni J. Bollag, Seth P. Lerner, Andrea B. Apolo, Hugo Villanueva, MinJae Lee, Andrew G. Sikora, Yair Lotan, Arun Sreekumar, Cristian Coarfa, and Nagireddy Putluri
- 3702** A Novel ACKR2-Dependent Role of Fibroblast-Derived CXCL14 in Epithelial-to-Mesenchymal Transition and Metastasis of Breast Cancer
Elin Sjöberg, Max Meyrath, Laura Milde, Mercedes Herrera, John Lövtrot, Daniel Hägerstrand, Oliver Frings, Margarita Bartish, Charlotte Rolny, Erik Sonnhammer, Andy Chevigné, Martin Augsten, and Arne Östman
See related commentary, p. 3476

Table of Contents

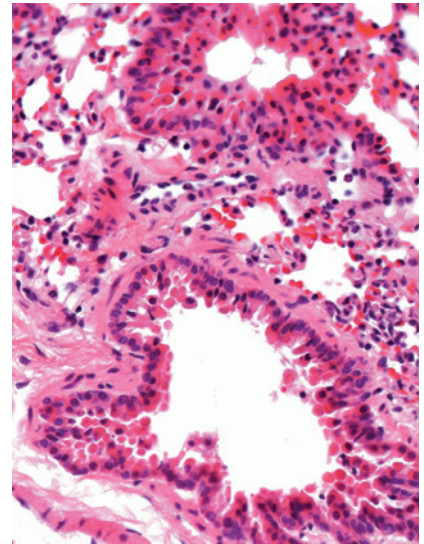
- 3718** SS18-SSX-Dependent YAP/TAZ Signaling in Synovial Sarcoma
Ilka Isfort, Magdalene Cyra, Sandra Elges, Sareetha Kailayangiri, Bianca Altvater, Claudia Rossig, Konrad Steinestel, Inga Grünewald, Sebastian Huss, Eva Eßeling, Jan-Henrik Mikesch, Susanne Hafner, Thomas Simmet, Agnieszka Wozniak, Patrick Schöffski, Olle Larsson, Eva Wardelmann, Marcel Trautmann, and Wolfgang Hartmann

- 3732** The Caspase-3/PKC δ /Akt/VEGF-A Signaling Pathway Mediates Tumor Repopulation during Radiotherapy
Jin Cheng, Sijia He, Min Wang, Ling Zhou, Zhengxiang Zhang, Xiao Feng, Yang Yu, Jingjing Ma, Chenyun Dai, Shengping Zhang, Lianhui Sun, Yanping Gong, Yiwei Wang, Minghui Zhao, Yuntao Luo, Xinjian Liu, Ling Tian, Chuanyuan Li, and Qian Huang

 AC icon indicates AuthorChoice
For more information please visit www.aacrjournals.org

ABOUT THE COVER

The cover shows a section of lung from a PDX model of adult T-cell leukemia/lymphoma. Hematoxylin and eosin (H&E) staining shows congested alveolar septa with frequent neutrophils but complete absence of neoplastic cells. For details, see the article by Chung and colleagues on page 3589 of this issue.



Clinical Cancer Research

25 (12)

Clin Cancer Res 2019;25:3471-3743.

Updated version Access the most recent version of this article at:
<http://clincancerres.aacrjournals.org/content/25/12>

E-mail alerts [Sign up to receive free email-alerts](#) related to this article or journal.

Reprints and Subscriptions To order reprints of this article or to subscribe to the journal, contact the AACR Publications Department at pubs@aacr.org.

Permissions To request permission to re-use all or part of this article, use this link <http://clincancerres.aacrjournals.org/content/25/12>.
Click on "Request Permissions" which will take you to the Copyright Clearance Center's (CCC) Rightslink site.