

October 15, 2019 • Volume 25 • Number 20

**SPECIAL FEATURES**

**Highlights of This Issue 6013**

**CCR Translations**

**6015** Glasdegib with Low-Dose Cytarabine: A New Upfront Option for the Vulnerable AML Patient

Amir T. Fathi

*See related article, p. 6021*

**6018** Twist of Fate for Acute Promyelocytic Leukemia: TRIB3–TWIST1 Interaction Promotes Resistance

Stephen Z. Peeke and Kira Gritsman

*See related article, p. 6228*

**CCR Drug Updates**

**6021** FDA Approval Summary: Glasdegib for Newly Diagnosed Acute Myeloid Leukemia

Kelly J. Norsworthy, Kunthel By, Sriram Subramaniam, Luning Zhuang, Pedro L. Del Valle, Donna Przepiorka, Yuan-Li Shen, Christopher M. Sheth, Chao Liu, Ruby Leong, Kirsten B. Goldberg, Ann T. Farrell, and Richard Pazdur

*See related commentary, p. 6015*

**Review**

**6026** Molecular Residual Disease and Adjuvant Trial Design in Solid Tumors

Maria Coakley, Isaac Garcia-Murillas, and Nicholas C. Turner

**CLINICAL TRIALS: TARGETED THERAPY**

**6035** Phase I and Pharmacology Study of Ropidoxuridine (IPdR) as Prodrug for Iododeoxyuridine-Mediated Tumor Radiosensitization in Advanced GI Cancer Undergoing Radiation

Timothy Kinsella, Howard Safran, Susan Wiersma, Thomas DiPetrillo, Andrew Schumacher, Kayla Rosati, John Vatkevich, Lawrence W. Anderson, Kimberly D. Hill, Charles Kunos, and Jerry M. Collins

**CLINICAL TRIALS: IMMUNOTHERAPY**

**6044** Antitumor Activity and Tolerability of hu14.18-IL2 with GMCSF and Isotretinoin in Recurrent or Refractory Neuroblastoma: A Children's Oncology Group Phase II Study

Suzanne Shusterman, Arlene Naranjo, Collin Van Ryn, Jaquelyn A. Hank, Marguerite T. Parisi, Barry L. Shulkin, Sabah Servaes, Wendy B. London, Hiroyuki Shimada, Jacek Gan, Steven D. Gillies, John M. Maris, Julie R. Park, and Paul M. Sondel

**6052** Dose-Ranging and Cohort-Expansion Study of Monalizumab (IPH2201) in Patients with Advanced Gynecologic Malignancies: A Trial of the Canadian Cancer Trials Group (CCTG): IND221

Anna V. Tinker, Holger W. Hirte, Diane Provencher, Marcus Butler, Heather Ritter, Dongsheng Tu, Hatem A. Azim Jr, Paulo Paralejas, Nathalie Grenier, Shirley-Ann Hahn, Janelle Ramsahai, and Lesley Seymour

**6061** Safety, Clinical Activity, and Biological Correlates of Response in Patients with Metastatic Melanoma: Results from a Phase I Trial of Atezolizumab

Omid Hamid, Luciana Molinero, Christopher R. Bolen, Jeffrey A. Sosman, Eva Muñoz-Couselo, Harriet M. Kluger, David F. McDermott, John D. Powderly, Indrani Sarkar, Marcus Ballinger, Marcella Fassò, Carol O'Hear, Daniel S. Chen, Priti S. Hegde, and F. Stephen Hodi

**6073** Multicenter, Open-Label, Phase II Study of Bendamustine and Rituximab Followed by 90-Yttrium (Y) Ibritumomab Tiuxetan for Untreated Follicular Lymphoma (Fol-BRITe)



Frederick Lansigan, Cristiana A. Costa, Bassem I. Zaki, Stephanie P. Yen, Eric S. Winer, Helen Ryan, Darcie Findley, Sara R. Metzler, Lynn Shaw, Bonnie Toaso, Todd A. MacKenzie, Youdinghuan Chen, and Anne W. Beaven



# Table of Contents

## PRECISION MEDICINE AND IMAGING

**6080** PD-L1 Expression and Clinical Outcomes to Cabozantinib, Everolimus, and Sunitinib in Patients with Metastatic Renal Cell Carcinoma: Analysis of the Randomized Clinical Trials METEOR and CABOSUN

Abdallah Flaifel, Wanling Xie, David A. Braun, Miriam Ficial, Ziad Bakouny, Amin H. Nassar, Rebecca B. Jennings, Bernard Escudier, Daniel J. George, Robert J. Motzer, Michael J. Morris, Thomas Powles, Evelyn Wang, Ying Huang, Gordon J. Freeman, Toni K. Choueiri, and Sabina Signoretti

**6089** Circulating Tumor Cell Clusters in Patients with Metastatic Breast Cancer: a SWOG S0500 Translational Medicine Study

Costanza Paoletti, Jieling Miao, Emily M. Dolce, Elizabeth P. Darga, Madeline I. Repollet, Gerald V. Doyle, Julie R. Gralow, Gabriel N. Hortobagyi, Jeffrey B. Smerage, William E. Barlow, and Daniel F. Hayes

**6098** Angiogenic Factor and Cytokine Analysis among Patients Treated with Adjuvant VEGFR TKIs in Resected Renal Cell Carcinoma

Wenxin Xu, Maneka Puligandla, Judith Manola, Andrea J. Bullock, Daniel Tamasauskas, David F. McDermott, Michael B. Atkins, Naomi B. Haas, Keith Flaherty, Robert G. Uzzo, Janice P. Dutcher, Robert S. DiPaola, and Rupal S. Bhatt

**6107** Molecular Profiling of Hepatocellular Carcinoma Using Circulating Cell-Free DNA

Ahmed O. Kaseb, Nora S. Sánchez, Shiraj Sen, Robin K. Kelley, Benjamin Tan, Andrea G. Bocobo, Kian H. Lim, Reham Abdel-Wahab, Marc Uemura, Roberto Carmagnani Pestana, Wei Qiao, Lianchun Xiao, Jeffrey Morris, Hesham M. Amin, Manal M. Hassan, Asif Rashid, Kimberly C. Banks, Richard B. Lanman, AmirAli Talasaz, Kenna R. Mills-Shaw, Bhawana George, Abedul Haque, Kanwal P.S. Raghav, Robert A. Wolff, James C. Yao, Funda Meric-Bernstam, Sadakatsu Ikeda, and Razelle Kurzrock

## TRANSLATIONAL CANCER MECHANISMS AND THERAPY

**6119** Circulating Tumor DNA Profiling in Small-Cell Lung Cancer Identifies Potentially Targetable Alterations

Siddhartha Devarakonda, Sumithra Sankararaman, Brett H. Herzog, Kathryn A. Gold, Saiama N. Waqar, Jeffrey P. Ward, Victoria M. Raymond, Richard B. Lanman, Aadel A. Chaudhuri, Taofeek K. Owonikoko, Bob T. Li, John T. Poirier, Charles M. Rudin, Ramaswamy Govindan, and Daniel Morgensztern

**6127** The CHK1 Inhibitor Prexasertib Exhibits Monotherapy Activity in High-Grade Serous Ovarian Cancer Models and Sensitizes to PARP Inhibition

Kalindi Parmar, Bose S. Kochupurakkal, Jean-Bernard Lazaro, Zhigang C. Wang, Sangeetha Palakurthi, Paul T. Kirschmeier, Chunyu Yang, Larissa A. Sambel, Anniina Färkkilä, Elizaveta Reznichenko, Hunter D. Reavis, Connor E. Dunn, Lee Zou, Khanh T. Do, Panagiotis A. Konstantinopoulos, Ursula A. Matulonis, Joyce F. Liu, Alan D. D'Andrea, and Geoffrey I. Shapiro

**6141** Tumor Mutation Burden and Prognosis in Patients with Colorectal Cancer Treated with Adjuvant Fluoropyrimidine and Oxaliplatin

Dae-Won Lee, Sae-Won Han, Jeong Mo Bae, Hoon Jang, Hyojun Han, Hyoki Kim, Duhee Bang, Seung-Yong Jeong, Kyu Joo Park, Gyeong Hoon Kang, and Tae-You Kim

**6148** Development of a Theranostic Convergence Bioradiopharmaceutical for Immuno-PET Based Radioimmunotherapy of L1CAM in Cholangiocarcinoma Model


In Ho Song, Mun Sik Jeong, Hyo Jeong Hong, Jong Il Shin, Yong Serk Park, Sang-Keun Woo, Byung Seok Moon, Kwang Il Kim, Yong Jin Lee, Joo Hyun Kang, and Tae Sup Lee

**6160** Clinical and Molecular Predictors of Response to Immune Checkpoint Inhibitors in Patients with Advanced Esophagogastric Cancer

Megan Grealley, Joanne F. Chou, Walid K. Chatila, Matthew Margolis, Marinela Capanu, Jaclyn F. Hechtman, Yaelle Tuvy, Ritika Kundra, Foysal Daian, Marc Ladanyi, David P. Kelsen, David H. Ilson, Michael F. Berger, Laura H. Tang, David B. Solit, Luis A. Diaz Jr, Nikolaus Schultz, Yelena Y. Janjigian, and Geoffrey Y. Ku

**6170** Intratumoral *Fusobacterium Nucleatum* Levels Predict Therapeutic Response to Neoadjuvant Chemotherapy in Esophageal Squamous Cell Carcinoma

Kensuke Yamamura, Daisuke Izumi, Raju Kandimalla, Fuminori Sonohara, Yoshifumi Baba, Naoya Yoshida, Yasuhiro Kodera, Hideo Baba, and Ajay Goel

**6180**  Pik3ip1 Is a Negative Immune Regulator that Inhibits Antitumor T-Cell Immunity

Yichen Chen, Jun Wang, Xi Wang, Xinye Li, Jingjing Song, Juan Fang, Xiangqi Liu, Tao Liu, Dikan Wang, Qunxing Li, Shuqiong Wen, Da Ma, Juan Xia, Liqun Luo, Song Guo Zheng, Jun Cui, Gucheng Zeng, Lieping Chen, Bin Cheng, and Zhi Wang

# Table of Contents

**6195** The Covalent CDK7 Inhibitor THZ1 Potently Induces Apoptosis in Multiple Myeloma Cells *In Vitro* and *In Vivo*

Yu Zhang, Liang Zhou, Dipankar Bandyopadhyay, Kanika Sharma, Alexander Joseph Allen, Maciej Kmiecik, and Steven Grant

**6206** The Indenoisoquinoline TOP1 Inhibitors Selectively Target Homologous Recombination-Deficient and Schlafen 11-Positive Cancer Cells and Synergize with Olaparib

Laetitia Marzi, Ludmila Szabova, Melanie Gordon, Zoe Weaver Ohler, Shyam K. Sharan, Michael L. Beshiri, Moudjib Etemadi, Junko Murai, Kathleen Kelly, and Yves Pommier

**6217** Impact of AAV2 and Hepatitis B Virus Integration Into Genome on Development of Hepatocellular Carcinoma in Patients with Prior Hepatitis B Virus Infection

Kenji Tatsuno, Yutaka Midorikawa, Tadatoshi Takayama, Shogo Yamamoto, Genta Nagae, Mitsuhiro Moriyama, Hayato Nakagawa, Kazuhiko Koike, Kyoji Moriya, and Hiroyuki Aburatani

**6228** TRIB3 Stabilizes High TWIST1 Expression to Promote Rapid APL Progression and ATRA Resistance



Jian Lin, Wu Zhang, Li-Ting Niu, Yong-Mei Zhu, Xiang-Qin Weng, Yan Sheng, Jiang Zhu, and Jie Xu  
*See related commentary, p. 6018*

**6243** Patient-Derived Xenografts and Matched Cell Lines Identify Pharmacogenomic Vulnerabilities in Colorectal Cancer

Luca Lazzari, Giorgio Corti, Gabriele Picco, Claudio Isella, Monica Montone, Pamela Arcella, Erika Durinikova, Eugenia R. Zanella, Luca Novara, Fabiane Barbosa, Andrea Cassingena, Carlotta Cancelliere, Enzo Medico, Andrea Sartore-Bianchi, Salvatore Siena, Mathew J. Garnett, Andrea Bertotti, Livio Trusolino, Federica Di Nicolantonio, Michael Linnebacher, Alberto Bardelli, and Sabrina Arena

**6260** Eμ-TCL1xMyc: A Novel Mouse Model for Concurrent CLL and B-Cell Lymphoma

Fabienne Lucas, Kerry A. Rogers, Bonnie K. Harrington, Alexander Pan, Lianbo Yu, Justin Breitbart, Ralf Bunschuh, Virginia M. Goettl, Zachary A. Hing, Parviz Kanga, Rose Mantel, Deepa Sampath, Lisa L. Smith, Ronni Wasmuth, Danielle K. White, Pearly Yan, John C. Byrd, Rosa Lapalombella, and Jennifer A. Woyach

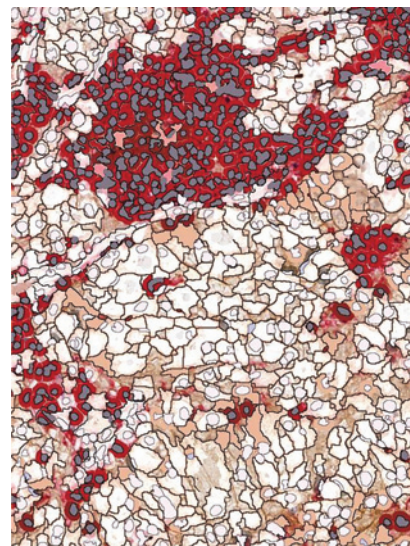


AC icon indicates AuthorChoice

For more information please visit [www.aacrjournals.org](http://www.aacrjournals.org)

## ABOUT THE COVER

The cover shows a markup image (generated by the HALO image analysis software) for a clear-cell renal cell carcinoma section double immunostained for PD-L1 and markers of immune cells. PD-L1(+) immune cells are labeled in dark red and PD-L1(-) immune cells are labeled in light red. For details, see the article by Flaifel and colleagues on page 6080 of this issue.



# Clinical Cancer Research

**25 (20)**

*Clin Cancer Res* 2019;25:6013-6273.

**Updated version** Access the most recent version of this article at:  
<http://clincancerres.aacrjournals.org/content/25/20>

**E-mail alerts** [Sign up to receive free email-alerts](#) related to this article or journal.

**Reprints and Subscriptions** To order reprints of this article or to subscribe to the journal, contact the AACR Publications Department at [pubs@aacr.org](mailto:pubs@aacr.org).

**Permissions** To request permission to re-use all or part of this article, use this link <http://clincancerres.aacrjournals.org/content/25/20>. Click on "Request Permissions" which will take you to the Copyright Clearance Center's (CCC) Rightslink site.