

SPECIAL FEATURES

Highlights of This Issue 2361

CCR Translations

2363 Depression Stresses the Immune Response and Promotes Prostate Cancer Growth

Hemn Mohammadpour, Mark J. Bucsek, Bonnie L. Hylander, and Elizabeth A. Repasky
See related article, p. 2621

2366 Endometrial Tumor Immune Response: Predictive Biomarker of Response to Immunotherapy

Mary M. Mullen and David G. Mutch
See related article, p. 2537

2369 The "Guardian of the Genome"—An Old Key to Unlock the ERCC1 Issue

Luc Friboulet, Jean-Charles Soria, and Ken André Olaussen
See related article, p. 2523

2372 Going through Changes: Surface IgM Levels during CLL Therapy with Ibrutinib

Jan A. Burger
See related article, p. 2503

2375 (Not Giving Up) The Marathon Race of MET Targeting Therapy: Are We There Yet?

Patrick C. Ma
See related articles, p. 2403 and p. 2414

Reviews

2379 Keratinocyte Carcinomas: Current Concepts and Future Research Priorities

Priyadharsini Nagarajan, Maryam M. Asgari, Adele C. Green, Samantha M. Guhan, Sarah T. Arron, Charlotte M. Proby, Dana E. Rollison, Catherine A. Harwood, and Amanda Ewart Toland

2392 Biological Consequences of MHC-II Expression by Tumor Cells in Cancer

Margaret L. Axelrod, Rebecca S. Cook, Douglas B. Johnson, and Justin M. Balko

CLINICAL TRIALS: TARGETED THERAPY

2403 Phase I Study of AMG 337, a Highly Selective Small-molecule MET Inhibitor, in Patients with Advanced Solid Tumors

David S. Hong, Patricia LoRusso, Omid Hamid, Filip Janku, Muaiad Kittaneh, Daniel V.T. Catenacci, Emily Chan, Tanius Bekaii-Saab, Shirish M. Gadgeel, Robert D. Loberg, Benny M. Amore, Yuying C. Hwang, Rui Tang, Gataree Ngarmchamnanrith, and Eunice L. Kwak
See related commentary, p. 2375

2414 A Multicenter Phase II Study of AMG 337 in Patients with *MET*-Amplified Gastric/Gastroesophageal Junction/Esophageal Adenocarcinoma and Other *MET*-Amplified Solid Tumors

Eric Van Cutsem, Boguslawa Karaszewska, Yoon-Koo Kang, Hyun Cheol Chung, Veena Shankaran, Salvatore Siena, Ning F. Go, Hui Yang, Marco Schupp, and David Cunningham
See related commentary, p. 2375

2424 PRE-surgical Metformin In Uterine Malignancy (PREMIUM): a Multi-Center, Randomized Double-Blind, Placebo-Controlled Phase III Trial



Sarah J. Kitson, Zoe Maskell, Vanitha N. Sivalingam, Jennifer L. Allen, Saad Ali, Sean Burns, Kyle Gilmour, Rahamatulla Latheef, Richard J. Slade, Philip W. Pemberton, Joseph Shaw, W. David Ryder, Henry C. Kitchener, and Emma J. Crosbie

PRECISION MEDICINE AND IMAGING

2433 Central Nervous System Metastasis in Patients with HER2-Positive Metastatic Breast Cancer: Patient Characteristics, Treatment, and Survival from SystHERs



Sara A. Hurvitz, Joyce O'Shaughnessy, Ginny Mason, Denise A. Yardley, Mohammad Jahanzeb, Adam Brufsky, Hope S. Rugo, Sandra M. Swain, Peter A. Kaufman, Debu Tripathy, Laura Chu, Haocheng Li, Vincent Antao, and Melody Cobleigh

2442 Multiplex Quantitative Analysis of Tumor-Infiltrating Lymphocytes and Immunotherapy Outcome in Metastatic Melanoma

Pok Fai Wong, Wei Wei, James W. Smithy, Balazs Acs, Maria I. Toki, Kim R.M. Blenman, Daniel Zelterman, Harriet M. Kluger, and David L. Rimm



Table of Contents

- 2450** **Clinical and Genomic Implications of Luminal and Basal Subtypes Across Carcinomas**
Shuang G. Zhao, William S. Chen, Rajdeep Das, S. Laura Chang, Scott A. Tomlins, Jonathan Chou, David A. Quigley, Ha X. Dang, Travis J. Barnard, Brandon A. Mahal, Ewan A. Gibb, Yang Liu, Elai Davicioni, Linda R. Duska, Edwin M. Posadas, Shruti Jolly, Daniel E. Spratt, Paul L. Nguyen, Christopher A. Maher, Eric J. Small, and Felix Y. Feng
- 2458** **Mutational Analysis of 472 Urothelial Carcinoma Across Grades and Anatomic Sites**
Amin H. Nassar, Renato Umeton, Jaegil Kim, Kevin Lundgren, Lauren Harshman, Eliezer M. Van Allen, Mark Preston, Fei Dong, Joaquim Bellmunt, Kent W. Mouw, Toni K. Choueiri, Guru Sonpavde, and David J. Kwiatkowski
- 2471** **Measurement of Tumor Antioxidant Capacity and Prediction of Chemotherapy Resistance in Preclinical Models of Ovarian Cancer by Positron Emission Tomography**
Hannah E. Greenwood, Patrick N. McCormick, Thibault Gendron, Matthias Glaser, Raul Pereira, Oliver D. K. Maddocks, Kerstin Sander, Tong Zhang, Norman Koglin, Mark F. Lythgoe, Erik Årstad, Daniel Hochhauser, and Timothy H. Witney
- 2483** **Epigenetic Silencing Affects L-Asparaginase Sensitivity and Predicts Outcome in T-ALL**
Aurore Touzart, Etienne Lengliné, Mehdi Latiri, Mohamed Belhocine, Charlotte Smith, Xavier Thomas, Salvatore Spicuglia, Denis Puthier, Françoise Pflumio, Thibaut Leguay, Carlos Graux, Yves Chalandon, Françoise Huguet, Stéphane Leprêtre, Norbert Ifrah, Hervé Dombret, Elizabeth Macintyre, Mathilde Hunault, Nicolas Boissel, and Vahid Asnafi
- 2494** **Validation of Melanoma Immune Profile (MIP), a Prognostic Immune Gene Prediction Score for Stage II–III Melanoma**
Robyn D. Gartrell, Douglas K. Marks, Emanuelle M. Rizk, Margaret Bogardus, Camille L. Gérard, Luke W. Barker, Yichun Fu, Camden L. Esancy, Gen Li, Jiayi Ji, Shumin Rui, Marc S. Ernstoff, Bret Taback, Sarabjot Pabla, Rui Chang, Sandra J. Lee, John J. Krolewski, Carl Morrison, Basil A. Horst, and Yvonne M. Saenger
- 2513** **BRCA1 Promoter Methylation Is Linked to Defective Homologous Recombination Repair and Elevated miR-155 to Disrupt Myeloid Differentiation in Myeloid Malignancies**
Weijie Poh, Robert L. Dilley, Alison R. Moliterno, Jaroslaw P. Maciejewski, Keith W. Pratz, Michael A. McDevitt, and James G. Herman
- 2523** **Identification and Characterization of Synthetic Viability with ERCC1 Deficiency in Response to Interstrand Crosslinks in Lung Cancer**
Joshua R. Heyza, Wen Lei, Donovan Watza, Hao Zhang, Wei Chen, Jessica B. Back, Ann G. Schwartz, Gerold Bepler, and Steve M. Patrick
See related commentary, p. 2369
- 2537** **Molecular Subtype Not Immune Response Drives Outcomes in Endometrial Carcinoma**
Aline Talhouk, Heather Derocher, Pascal Schmidt, Samuel Leung, Katy Milne, C. Blake Gilks, Michael S. Anglesio, Brad H. Nelson, and Jessica N. McAlpine
See related commentary, p. 2366
- 2549** **Immune Checkpoint Inhibitor-induced Reinvigoration of Tumor-infiltrating CD8⁺ T Cells is Determined by Their Differentiation Status in Glioblastoma**
Junsik Park, Minsuk Kwon, Kyung Hwan Kim, Tae-Shin Kim, Seon-Hui Hong, Chang Gon Kim, Seok-Gu Kang, Ju Hyung Moon, Eui Hyun Kim, Su-Hyung Park, Jong Hee Chang, and Eui-Cheol Shin
- 2560** **CAR T Cells Targeting B7-H3, a Pan-Cancer Antigen, Demonstrate Potent Preclinical Activity Against Pediatric Solid Tumors and Brain Tumors**
Robbie G. Majzner, Johanna L. Theruvath, Anandani Nellan, Sabine Heitzeneder, Yongzhi Cui, Christopher W. Mount, Skyler P. Rietberg, Miles H. Linde, Peng Xu, Christopher Rota, Elena Sotillo, Louai Labanieh, Daniel W. Lee, Rimas J. Orentas, Dimiter S. Dimitrov, Zhongyu Zhu, Brad St Croix, Alberto Delaidelli, Alla Sekunova, Ezio Bonvini, Siddhartha S. Mitra, Martha M. Quezado, Ravindra Majeti, Michelle Monje, Poul H.B. Sorensen, John M. Maris, and Crystal L. Mackall
- 2575** **YH25448, an Irreversible EGFR-TKI with Potent Intracranial Activity in EGFR Mutant Non–Small Cell Lung Cancer**
 Jiyeon Yun, Min Hee Hong, Seok-Young Kim, Chae-Won Park, Soyoung Kim, Mi Ran Yun, Han Na Kang, Kyoung-Ho Pyo, Sung Sook Lee, Jong Sung Koh, Ho-Juhn Song, Dong Kyun Kim, Young-Sung Lee, Se-Woong Oh, Soongyu Choi, Hye Ryun Kim, and Byoung Chul Cho

TRANSLATIONAL CANCER MECHANISMS AND THERAPY

- 2503** **Ibrutinib Therapy Releases Leukemic Surface IgM from Antigen Drive in Chronic Lymphocytic Leukemia Patients**
Samantha Drennan, Giorgia Chiodin, Annalisa D'Avola, Ian Tracy, Peter W. Johnson, Livio Trentin, Andrew J. Steele, Graham Packham, Freda K. Stevenson, and Francesco Forconi
See related commentary, p. 2372

Table of Contents

- 2588** Elevated WBP2 Expression in HER2-positive Breast Cancers Correlates with Sensitivity to Trastuzumab-based Neoadjuvant Therapy: A Retrospective and Multicentric Study
Shin-Ae Kang, Jye Swei Guan, Hock Jin Tan, Tinghine Chu, Aye Aye Thike, Cristina Bernadó, Joaquín Arribas, Chow Yin Wong, Puay Hoon Tan, Mihir Gudi, Thomas Choudary Putti, Joohyuk Sohn, Swee Ho Lim, Soo Chin Lee, and Yoon Pin Lim
- 2601** NQO1-dependent, Tumor-selective Radiosensitization of Non-small Cell Lung Cancers
Edward A. Motea, Xiumei Huang, Naveen Singh, Jessica A. Kilgore, Noelle S. Williams, Xian-Jin Xie, David E. Gerber, Muhammad S. Beg, Erik A. Bey, and David A. Boothman
- 2610** Fucosylation Enhances the Efficacy of Adoptively Transferred Antigen-Specific Cytotoxic T Lymphocytes
Gheath Alatrash, Na Qiao, Mao Zhang, Madhushree Zope, Alexander A. Perakis, Pariya Sukhumalchandra, Anne V. Philips, Haven R. Garber, Celine Kerros, Lisa S. St. John, Maria R. Khouri, Hiep Khong, Karen Clise-Dwyer, Leonard P. Miller, Steve Wolpe, Willem W. Overwijk, Jeffrey J. Mollndrem, Qing Ma, Elizabeth J. Shpall, and Elizabeth A. Mittendorf
- 2621** Depression-Induced Neuropeptide Y Secretion Promotes Prostate Cancer Growth by Recruiting Myeloid Cells
Yan Cheng, Xin-Ying Tang, Yi-Xuan Li, Dan-Dan Zhao, Qiu-Hua Cao, Hong-Xi Wu, Hong-Bao Yang, Kun Hao, and Yong Yang
See related commentary, p. 2363
- 2633** PRMT5-mediated H4R3me2 Confers Cell Differentiation in Pediatric B-cell Precursor Acute Lymphoblastic Leukemia
Mei Mei, Ruidong Zhang, Zhong-Wei Zhou, Zhengzhou Ying, Jincheng Wang, Han Zhang, Huyong Zheng, and Shilai Bao
- 2644** Role of Tumor-Associated Macrophages in the Clinical Course of Pancreatic Neuroendocrine Tumors (PanNETs)
Lei Cai, Theodoros Michelakos, Vikram Deshpande, Kshitij S. Arora, Teppei Yamada, David T. Ting, Marty S. Taylor, Carlos Fernandez-del Castillo, Andrew L. Warshaw, Keith D. Lillemoe, Soldano Ferrone, and Cristina R. Ferrone

- 2656** The Misclassification of Diffuse Gliomas: Rates and Outcomes
J. Bryan Iorgulescu, Matthew Torre, Maya Harary, Timothy R. Smith, Ayal A. Aizer, David A. Reardon, Jill S. Barnholtz-Sloan, and Arie Perry
- 2664** Predicting Survival in Patients Undergoing Resection for Locally Recurrent Retroperitoneal Sarcoma: A Study and Novel Nomogram from TARPSWG
Chandrajit P. Raut, Dario Callegaro, Rosalba Miceli, Francesco Barretta, Piotr Rutkowski, Jean-Yves Blay, Guy Lahat, Dirk C. Strauss, Ricardo Gonzalez, Nita Ahuja, Giovanni Grignani, Vittorio Quagliuolo, Eberhard Stoeckle, Antonino De Paoli, Venu G. Pillarisetty, Carolyn Nessim, Carol J. Swallow, Sanjay Bagaria, Robert Canter, John Mullen, Hans J. Gelderblom, Elisabetta Pennacchioli, Frits van Coevorden, Kenneth Cardona, Marco Fiore, Mark Fairweather, and Alessandro Gronchi

CORRECTIONS

- 2672** Correction: Epigenetic Therapy with Panobinostat Combined with Bicalutamide Rechallenge in Castration-Resistant Prostate Cancer
Anna C. Ferrari, Joshi J. Alumkal, Mark N. Stein, Mary-Ellen Taplin, James Babb, Ethan S. Barnett, Alejandro Gomez-Pinillos, Xiaomei Liu, Dirk Moore, Robert DiPaola, and Tomasz M. Beer
- 2673** Correction: Simultaneous Expression of Furin and Vascular Endothelial Growth Factor in Human Oral Tongue Squamous Cell Carcinoma Progression
Ricardo López de Cicco, James C. Watson, Daniel E. Bassi, Samuel Litwin, and Andrés J. Klein-Szanto
- 2674** Correction: Inhibition of Furin-mediated Processing Results in Suppression of Astrocytoma Cell Growth and Invasiveness
Javier Mercapide, Ricardo Lopez De Cicco, Daniel E. Bassi, Javier S. Castresana, Gary Thomas, and Andres J. P. Klein-Szanto

RETRACTION

- 2675** Retraction: FRA-1 Expression in Hyperplastic and Neoplastic Thyroid Diseases
Gennaro Chiappetta, Giovanni Tallini, Maria Cristina De Biasio, Francesca Pentimalli, Filomena de Nigris, Simona Losito, Monica Fedele, Sabrina Battista, Pasquale Verde, Massimo Santoro, and Alfredo Fusco



AC icon indicates AuthorChoice

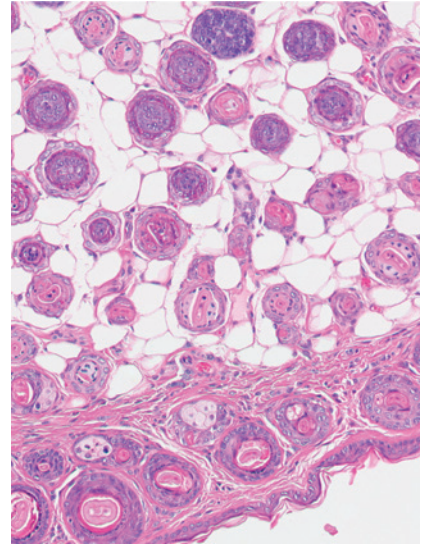
For more information please visit www.aacrjournals.org



Table of Contents

ABOUT THE COVER

The cover shows sections of epidermis from H1975-bearing BALB/c nude mice treated with YH25448. A lower H&E staining intensity was observed in the epidermis of YH25448-treated mice, suggesting that YH25448 induced less skin inflammation than osimertinib. For details, see the article by Yun and colleagues on page 2575 of this issue.



Clinical Cancer Research

25 (8)

Clin Cancer Res 2019;25:2361-2675.

Updated version Access the most recent version of this article at:
<http://clincancerres.aacrjournals.org/content/25/8>

E-mail alerts [Sign up to receive free email-alerts](#) related to this article or journal.

Reprints and Subscriptions To order reprints of this article or to subscribe to the journal, contact the AACR Publications Department at pubs@aacr.org.

Permissions To request permission to re-use all or part of this article, use this link <http://clincancerres.aacrjournals.org/content/25/8>. Click on "Request Permissions" which will take you to the Copyright Clearance Center's (CCC) Rightslink site.