

## CLINICAL CANCER RESEARCH

## TABLE OF CONTENTS

## HIGHLIGHTS

2279 Selected Articles from This Issue

## SPECIAL FEATURES

## CCR Translations

2281 **Telomere Attrition in Childhood Cancer Survivors**  
 Kyle M. Walsh  
 See related article, p. 2362

## CCR Drug Updates

2284 **FDA Approval Summary: Atezolizumab Plus Paclitaxel Protein-bound for the Treatment of Patients with Advanced or Metastatic TNBC Whose Tumors Express PD-L1**  
 Preeti Narayan, Sakar Wahby, Jennifer J. Gao, Laleh Amiri-Kordestani, Amna Ibrahim, Erik Bloomquist, Shenghui Tang, Yuan Xu, Jiang Liu, Wentao Fu, Pengfei Song, Bellinda L. King-Kallimanis, Sherry Hou, Yutao Gong, Shyam Kalavar, Soma Ghosh, Reena Philip, Kirsten B. Goldberg, Marc R. Theoret, Gideon M. Blumenthal, Paul G. Kluetz, Rajeshwari Sridhara, Richard Pazdur, and Julia A. Beaver

## RESEARCH BRIEFS: CLINICAL TRIAL BRIEF REPORT

2290 **A Phase II Basket Trial of Dual Anti-CTLA-4 and Anti-PD-1 Blockade in Rare Tumors (DART SWOG 1609) in Patients with Nonpancreatic Neuroendocrine Tumors**  
 Sandip P. Patel, Megan Othus, Young Kwang Chae, Francis J. Giles, Donna E. Hansel, Preet Paul Singh, Annette Fontaine, Manisha H. Shah, Anup Kasi, Tareq Al Baghdadi, Marc Matrana, Zoran Gatalica, W. Michael Korn, Jourdain Hayward, Christine McLeod, Helen X. Chen, Elad Sharon, Edward Mayerson, Christopher W. Ryan, Melissa Plets, Charles D. Blanke, and Razelle Kurzrock

## CLINICAL TRIALS: TARGETED THERAPY

2297 **Decitabine and Vorinostat with Chemotherapy in Relapsed Pediatric Acute Lymphoblastic Leukemia: A TACL Pilot Study**  
 Michael J. Burke, Rumen Kostadinov, Richard Sposto, Lia Gore, Shannon M. Kelley, Cara Rabik, Jane B. Trepel, Min-Jung Lee, Akira Yuno, Sunmin Lee, Deepa Bhojwani, Sima Jeha, Bill H. Chang, Maria Luisa Sulis, Michelle L. Hermiston, Paul Gaynon, Van Huynh, Anupam Verma, Rebecca Gardner, Kenneth M. Heym, Robyn M. Dennis, David S. Ziegler, Theodore W. Laetsch, Javier E. Oesterheld, Steven G. Dubois, Jessica A. Pollard, Julia Glade-Bender, Todd M. Cooper, Joel A. Kaplan, Midhat S. Farooqi, Byunggil Yoo, Erin Guest, Alan S. Wayne, and Patrick A. Brown

2308 **First-in-Human Phase I Study of ABBV-838, an Antibody-Drug Conjugate Targeting SLAMF7/CS1 in Patients with Relapsed and Refractory Multiple Myeloma**  
 Ravi Vij, Rajneesh Nath, Daniel E.H. Afar, María-Victoria Mateos, Jesús G. Berdeja, Marc S. Raab, Andreas Guenther, Joaquín Martínez-López, Andrzej J. Jakubowiak, Xavier Leleu, Katja Weisel, Shekman Wong, Scott Gulbranson, James P. Sheridan, Anita Reddy, Bruno Paiva, Anil Singhal, Jesús F. San-Miguel, and Philippe Moreau

## CLINICAL TRIALS: IMMUNOTHERAPY

2318 **Immune Checkpoint Blockade in Combination with Stereotactic Body Radiotherapy in Patients with Metastatic Pancreatic Ductal Adenocarcinoma**  
 Changqing Xie, Austin G. Duffy, Gagandeep Brar, Suzanne Fioravanti, Donna Mabry-Hrones, Melissa Walker, Cecilia Monge Bonilla, Bradford J. Wood, Deborah E. Citrin, Elizabeth M. Gil Ramirez, Freddy E. Escorcia, Bernadette Redd, Jonathan M. Hernandez, Jeremy L. Davis, Billel Gasmi, David Kleiner, Seth M. Steinberg, Jennifer C. Jones, and Tim F. Greten

# TABLE OF CONTENTS

**2327 Results of the ADAPT Phase 3 Study of Rocapuldence-T in Combination with Sunitinib as First-Line Therapy in Patients with Metastatic Renal Cell Carcinoma**

Robert A. Figlin, Nizar M. Tannir, Robert G. Uzzo, Scott S. Tykodi, David Y.T. Chen, Viraj Master, Anil Kapoor, Daniel Vaena, William Lowrance, Gennady Bratslavsky, Mark DeBenedette, Alicia Gamble, Ana Plachco, Marcus S. Norris, Joe Horvatinovich, Irina Y. Tcherepanova, Charles A. Nicolette, and Christopher G. Wood, for the ADAPT study group

**2337 Efficacy, Safety, and Biomarkers of Toripalimab in Patients with Recurrent or Metastatic Neuroendocrine Neoplasms: A Multiple-Center Phase Ib Trial**

Ming Lu, Panpan Zhang, Yanqiao Zhang, Zhongwu Li, Jifang Gong, Jie Li, Jian Li, Yan Li, Xiaotian Zhang, Zhihao Lu, Xicheng Wang, Jun Zhou, Zhi Peng, Weifeng Wang, Hui Feng, Hai Wu, Sheng Yao, and Lin Shen

**2346 A Phase I Study of Ruxolitinib, Lenalidomide, and Steroids for Patients with Relapsed/Refractory Multiple Myeloma**

James R. Berenson, Jennifer To, Tanya M. Spektor, Daisy Martinez, Carley Turner, Armando Sanchez, Matthew Ghermezi, Benjamin M. Eades, Regina A. Swift, Gary Schwartz, Shahrooz Eshaghian, Laura Stampleman, Robert A. Moss, Stephen Lim, and Robert Vescio

## PRECISION MEDICINE AND IMAGING

**2354 Baseline Plasma Tumor Mutation Burden Predicts Response to Pembrolizumab-based Therapy in Patients with Metastatic Non-Small Cell Lung Cancer**

Charu Aggarwal, Jeffrey C. Thompson, Austin L. Chien, Katie J. Quinn, Wei-Ting Hwang, Taylor A. Black, Stephanie S. Yee, Theresa E. Christensen, Michael J. LaRiviere, Benjamin A. Silva, Kimberly C. Banks, Rebecca J. Nagy, Elena Helman, Abigail T. Berman, Christine A. Ciunci, Aditi P. Singh, Jeffrey S. Wasser, Joshua M. Bauml, Corey J. Langer, Roger B. Cohen, and Erica L. Carpenter

**2362 Shortened Leukocyte Telomere Length Associates with an Increased Prevalence of Chronic Health Conditions among Survivors of Childhood Cancer: A Report from the St. Jude Lifetime Cohort**

Nan Song, Zhenghong Li, Na Qin, Carrie R. Howell, Carmen L. Wilson, John Easton, Heather L. Mulder, Michael N. Edmonson, Michael C. Rusch, Jinghui Zhang, Melissa M. Hudson, Yutaka Yasui, Leslie L. Robison, Kirsten K. Ness, and Zhaoming Wang

See related commentary, p. 2281

**2372 Circulating Tumor Cells Are Associated with Recurrent Disease in Patients with Early-Stage Non-Small Cell Lung Cancer Treated with Stereotactic Body Radiotherapy**

Melissa A. Frick, Steven J. Feigenberg, Samuel R. Jean-Baptiste, Louise A. Aguarin, Amberly Mendes, Chimbu Chinniah, Sam Swisher-McClure, Abigail Berman, William Levin, Keith A. Cengel, Stephen M. Hahn, Jay F. Dorsey, Charles B. Simone II, and Gary D. Kao

## TRANSLATIONAL CANCER MECHANISMS AND THERAPY

**2381 Oncolytic HSV-Infected Glioma Cells Activate NOTCH in Adjacent Tumor Cells Sensitizing Tumors to Gamma Secretase Inhibition**

Yoshihiro Otani, Ji Young Yoo, Samantha Chao, Joseph Liu, Alena Cristina Jaime-Ramirez, Tae Jin Lee, Brian Hurwitz, Yuanqing Yan, Hongsheng Dai, Joseph C. Glorioso, Michael A. Caligiuri, Jianhua Yu, and Balveen Kaur

**2393 Use of Ex Vivo Patient-Derived Tumor Organotypic Spheroids to Identify Combination Therapies for HER2 Mutant Non-Small Cell Lung Cancer**

Elena Ivanova, Mari Kuraguchi, Man Xu, Andrew J. Portell, Luke Taus, Irmina Diala, Alshad S. Lalani, Jihyun Choi, Emily S. Chambers, Shuai Li, Shengwu Liu, Ting Chen, Thanh U. Barbie, Geoffrey R. Oxnard, Jacob J. Haworth, Kwok-Kin Wong, Suzanne E. Dahlberg, Amir A. Aref, David A. Barbie, Magda Bahcall, Cloud P. Paweletz, and Pasi A. Jänne

**2404 Validation of a Hematopoietic Cell Transplant-Composite Risk (HCT-CR) Model for Post-Transplant Survival Prediction in Patients with Hematologic Malignancies**

Stefan O. Ciurea, Piyanuch Kongtim, Omar Hasan, Jorge M. Ramos Perez, Janet Torres, Gabriela Rondon, and Richard E. Champlin

**2411 Predicted Prognosis of Patients with Pancreatic Cancer by Machine Learning**

Seiya Yokoyama, Taiji Hamada, Michiyo Higashi, Kei Matsuo, Kosei Maemura, Hiroshi Kurahara, Michiko Horinouchi, Tsubasa Hiraki, Tomoyuki Sugimoto, Toshiaki Akahane, Suguru Yonezawa, Marko Kornmann, Surinder K. Batra, Michael A. Hollingsworth, and Akihide Tanimoto

# TABLE OF CONTENTS

**2422** ***BRAF* and *DIS3* Mutations Associate with Adverse Outcome in a Long-term Follow-up of Patients with Multiple Myeloma**

Eileen M. Boyle, Cody Ashby, Ruslana G. Tytarenko, Shayu Deshpande, Hongwei Wang, Yan Wang, Adam Rosenthal, Jeffrey Sawyer, Erming Tian, Erin Flynt, Antje Hoering, Sarah K. Johnson, Michael W. Rutherford, Christopher P. Wardell, Michael A. Bauer, Charles Dumontet, Thierry Facon, Sharmilan Thanendrarajan, Carolina D. Schinke, Maurizio Zangari, Frits van Rhee, Bart Barlogie, David Cairns, Graham Jackson, Anjan Thakurta, Faith E. Davies, Gareth J. Morgan, and Brian A. Walker

## LETTERS TO THE EDITOR

**2433** **Ipilimumab and Nivolumab in Rare Tumors S1609: Neuroendocrine—Letter**

Mohamad B. Sonbol and Thorvardur R. Halfdanarson

**2434** **Ipilimumab and Nivolumab in Rare Tumors S1609: Neuroendocrine—Response**

Sandip P. Patel, Megan Othus, Young Kwang Chae, and Razelle Kurzrock; On Behalf of the S1609 Team

**2435** **Safety, Clinical Activity, and Biological Correlates of Response in Patients with Metastatic Melanoma: Results from a Phase I Trial of Atezolizumab—Letter**

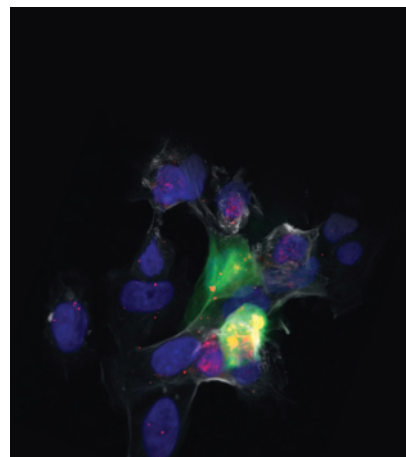
Daniel A. Goldstein and Mark J. Ratain

**2436** **Safety, Clinical Activity, and Biological Correlates of Response in Patients with Metastatic Melanoma: Results from a Phase I Trial of Atezolizumab—Response**

Omid Hamid, Rene Bruno, Marcella Fassio, Carol O'Hear, and Benjamin Wu

## ABOUT THE COVER

The cover shows a fluorescent image of GBM cells showing activation of NOTCH, visualized by red NICD staining, in cells adjacent to oHSV-infected cells seen in green. The white staining is F-actin. For details, see the article by Otani and colleagues on page 2381 of this issue.



# Clinical Cancer Research

**26 (10)**

*Clin Cancer Res* 2020;26:2279-2436.

**Updated version** Access the most recent version of this article at:  
<http://clincancerres.aacrjournals.org/content/26/10>

**E-mail alerts** [Sign up to receive free email-alerts](#) related to this article or journal.

**Reprints and Subscriptions** To order reprints of this article or to subscribe to the journal, contact the AACR Publications Department at [pubs@aacr.org](mailto:pubs@aacr.org).

**Permissions** To request permission to re-use all or part of this article, use this link <http://clincancerres.aacrjournals.org/content/26/10>.  
Click on "Request Permissions" which will take you to the Copyright Clearance Center's (CCC) Rightslink site.