

CLINICAL CANCER RESEARCH

TABLE OF CONTENTS

HIGHLIGHTS

2437 Selected Articles from This Issue

SPECIAL FEATURES

CCR Translations

2439 Honing in on PARPi Response in Prostate Cancer: from HR Pathway to Gene-by-Gene Granularity

Alexandra O. Sokolova, Evan Y. Yu, and Heather H. Cheng

See related article, p. 2487

2441 Resistance to First-line Osimertinib in EGFR-mutant NSCLC: Tissue is the Issue

Zofia Piotrowska and Aaron N. Hata

See related article, p. 2654

Review

2444 Enhancing Chimeric Antigen Receptor T-Cell Efficacy in Solid Tumors

Giovanni Fucà, Loic Reppel, Elisa Landoni, Barbara Savoldo, and Gianpietro Dotti

Perspectives

2452 Targeting DNA Repair to Drive Immune Responses: It's Time to Reconsider the Strategy for Clinical Translation

Nobuyuki Takahashi, Ira Surolia, and Anish Thomas

2457 Translating Basic Science Discoveries into Improved Outcomes for Glioblastoma

Peter B. Dirks, Mark R. Gilbert, Eric C. Holland, Elizabeth A. Maher, and William A. Weiss

2461 Design and Conduct of Early Clinical Studies of Immunotherapy: Recommendations from the Task Force on Methodology for the Development of Innovative Cancer Therapies 2019 (MDICT)

Martin Smoragiewicz, Alex A. Adjei, Emiliano Calvo, Josep Tabernero, Aurélien Marabelle, Christophe Massard, Jun Tang, Elisabeth G.E. de Vries, Jean-Yves Douillard, and Lesley Seymour; for the task force on Methodology for the Development of Innovative Cancer Therapies

CLINICAL TRIALS: TARGETED THERAPY

2466 BRAF-Mutant Transcriptional Subtypes Predict Outcome of Combined BRAF, MEK, and EGFR Blockade with Dabrafenib, Trametinib, and Panitumumab in Patients with Colorectal Cancer

A C

Gary Middleton, Yiqun Yang, Catarina D. Campbell, Thierry André, Chloe E. Atreya, Jan H.M. Schellens, Takayuki Yoshino, Johanna C. Bendell, Antoine Hollebecque, Autumn J. McRee, Salvatore Siena, Michael S. Gordon, Josep Tabernero, Rona Yaeger, Peter J. O'Dwyer, Filip De Vos, Eric Van Cutsem, John M. Millholland, Jan C. Brase, Fatima Rangwala, Eduard Gasal, and Ryan B. Corcoran

2477 Phase II Trial of Cabozantinib in Recurrent/Metastatic Endometrial Cancer: A Study of the Princess Margaret, Chicago, and California Consortia (NCI9322/PHL86)

Neesha C. Dhani, Hal W. Hirte, Lisa Wang, Julia V. Burnier, Angela Jain, Marcus O. Butler, Stephen Welch, Gini F. Fleming, Jean Hurteau, Koji Matsuo, Daniela Matei, Waldo Jimenez, Carolyn Johnston, Mihaela Cristea, Katia Tonkin, Prafull Ghatage, Stephanie Lheureux, Anjali Mehta, Judy Quintos, Qian Tan, Suzanne Kamel-Reid, Olga Ludkovski, Ming-Sound Tsao, John J. Wright, and Amit M. Oza

2487 Non-BRCA DNA Damage Repair Gene Alterations and Response to the PARP Inhibitor Rucaparib in Metastatic Castration-Resistant Prostate Cancer: Analysis From the Phase II TRITON2 Study

A C

Wassim Abida, David Campbell, Akash Patnaik, Jeremy D. Shapiro, Brieuc Sautois, Nicholas J. Vogelzang, Eric G. Voog, Alan H. Bryce, Ray McDermott, Francesco Ricci, Julie Rowe, Jingsong Zhang, Josep Maria Piulats, Karim Fizazi, Axel S. Merseburger, Celestia S. Higano, Laurence E. Krieger, Charles J. Ryan, Felix Y. Feng, Andrew D. Simmons, Andrea Loehr, Darrin Despain, Melanie Dowson, Foad Green, Simon P. Watkins, Tony Golsorkhi, and Simon Chowdhury

See related commentary, p. 2439

TABLE OF CONTENTS

- 2497** **A Phase I Study of Safety, Pharmacokinetics, and Pharmacodynamics of Concurrent Everolimus and Buparlisib Treatment in Advanced Solid Tumors**
Taofeek K. Owonikoko, R. Donald Harvey, Bradley Carthon, Zhengjia Chen, Colleen Lewis, Hanna Collins, Chao Zhang, David H. Lawson, Olatunji B. Alese, Mehmet Asim Bilen, Gabriel L. Sica, Conor E. Steuer, Walid L. Shaib, Christina Wu, Wayne B. Harris, Mehmet Akce, Ragini R. Kudchagkar, Bassel F. El-Rayes, Sagar Lonial, Suresh S. Ramalingam, and Fadlo Raja Khuri

CLINICAL TRIALS: IMMUNOTHERAPY

- 2506** **Patient-Reported Outcomes from the Phase III Randomized IMmotion151 Trial: Atezolizumab + Bevacizumab versus Sunitinib in Treatment-Naïve Metastatic Renal Cell Carcinoma**
A C Michael B. Atkins, Brian I. Rini, Robert J. Motzer, Thomas Powles, David F. McDermott, Cristina Suarez, Sergio Bracarda, Walter M. Stadler, Frede Donskov, Howard Gurney, Stephane Oudard, Motohide Uemura, Elaine T. Lam, Carsten Grüllich, Caroleen Quach, Susheela Carroll, Beiying Ding, Qian (Cindy) Zhu, Elisabeth Piault-Louis, Christina Schiff, and Bernard Escudier
- 2515** **Results of a Randomized Phase IIb Trial of Nelipepimut-S + Trastuzumab versus Trastuzumab to Prevent Recurrences in Patients with High-Risk HER2 Low-Expressing Breast Cancer**
G. Travis Clifton, Diane Hale, Timothy J. Vreeland, Annelies T. Hickerson, Jennifer K. Litton, Gheath Alatrash, Rashmi K. Murthy, Na Qiao, Anne V. Philips, Jason J. Lukas, Jarrod P. Holmes, George E. Peoples, and Elizabeth A. Mittendorf
- 2524** **First-in-Human Study of Utomilumab, a 4-1BB/CD137 Agonist, in Combination with Rituximab in Patients with Follicular and Other CD20⁺ Non-Hodgkin Lymphomas**
A C Ajay K. Gopal, Ronald Levy, Roch Houot, Sandip P. Patel, Leslie Popplewell, Caron Jacobson, Ximmeng J. Mu, Shibing Deng, Keith A. Ching, Ying Chen, Craig B. Davis, Bo Huang, Kolette D. Fly, Aron Thall, Adrian Woolfson, and Nancy L. Bartlett

PRECISION MEDICINE AND IMAGING

- 2535** **MET Alterations Are a Recurring and Actionable Resistance Mechanism in ALK-Positive Lung Cancer**
A C Ibiayi Dagogo-Jack, Satoshi Yoda, Jochen K. Lennerz, Adam Langenbacher, Jessica J. Lin, Marguerite M. Rooney, Kylie Prutisto-Chang, Audris Oh, Nathaniel A. Adams, Beow Y. Yeap, Emily Chin, Andrew Do, Hetal D. Marble, Sara E. Stevens, Subba R. Digumarthy, Ashish Saxena, Rebecca J. Nagy, Cyril H. Benes, Christopher G. Azzoli, Michael S. Lawrence, Justin F. Gainor, Alice T. Shaw, and Aaron N. Hata

- 2546** **Routine Plasma-Based Genotyping to Comprehensively Detect Germline, Somatic, and Reversion BRCA Mutations among Patients with Advanced Solid Tumors**
Neelima Vidula, Thereasa A. Rich, Oliver Sartor, Jennifer Yen, Aaron Hardin, Tracy Nance, Michael B. Lilly, Mohammad Amin Nezami, Sandip P. Patel, Benedito A. Carneiro, Alice C. Fan, Adam M. Brufsky, Barbara A. Parker, Benjamin B. Bridges, Neeraj Agarwal, Benjamin L. Maughan, Victoria M. Raymond, Stephen R. Fairclough, Richard B. Lanman, Aditya Bardia, and Massimo Cristofanilli

- 2556** **Sensitive Detection of Minimal Residual Disease in Patients Treated for Early-Stage Breast Cancer**
A C Heather A. Parsons, Justin Rhoades, Sarah C. Reed, Gregory Gydush, Priyanka Ram, Pedro Exman, Kan Xiong, Christopher C. Lo, Tianyu Li, Mark Fleharty, Gregory J. Kirkner, Denisse Rotem, Ofir Cohen, Fangyan Yu, Mariana Fitarelli-Kiehl, Ka Wai Leong, Melissa E. Hughes, Shoshana M. Rosenberg, Laura C. Collins, Kathy D. Miller, Brendan Blumenstiel, Lorenzo Trippa, Carrie Cibulskis, Donna S. Neuberg, Matthew DeFelice, Samuel S. Freeman, Niall J. Lennon, Nikhil Wagle, Gavin Ha, Daniel G. Stover, Atish D. Choudhury, Gad Getz, Eric P. Winer, Matthew Meyerson, Nancy U. Lin, Ian Krop, J. Christopher Love, G. Mike Makrigiorgos, Ann H. Partridge, Erica L. Mayer, Todd R. Golub, and Viktor A. Adalsteinsson

- 2565** **Tumor Mutational Burden and PTEN Alterations as Molecular Correlates of Response to PD-1/L1 Blockade in Metastatic Triple-Negative Breast Cancer**
Romualdo Barroso-Sousa, Tanya E. Keenan, Sonia Pernas, Pedro Exman, Esha Jain, Ana C. Garrido-Castro, Melissa Hughes, Brittany Bychkovsky, Renato Umeton, Janet L. Files, Neal I. Lindeman, Laura E. MacConaill, F. Stephen Hodi, Ian E. Krop, Deborah Dillon, Eric P. Winer, Nikhil Wagle, Nancy U. Lin, Elizabeth A. Mittendorf, Eliezer M. Van Allen, and Sara M. Tolaney

- 2573** **In Vivo Tracking of Adoptively Transferred Natural Killer Cells in Rhesus Macaques Using ⁸⁹Zirconium-Oxine Cell Labeling and PET Imaging**
Noriko Sato, Kate Stringaris, Jan K. Davidson-Moncada, Robert Reger, Stephen S. Adler, Cynthia Dunbar, Peter L. Choyke, and Richard W. Childs

- 2582** **Predicting Therapeutic Antibody Delivery into Human Head and Neck Cancers**
Guolan Lu, Shayan Fakurnejad, Brock A. Martin, Nynke S. van den Berg, Stan van Keulen, Naoki Nishio, Ashley J. Zhu, Stefania U. Chirita, Quan Zhou, Rebecca W. Gao, Christina S. Kong, Nancy Fischbein, Mrudula Penta, Alexander D. Colevas, and Eben L. Rosenthal

TABLE OF CONTENTS

- 2595** **CDKN1B Deletions are Associated with Metastasis in African American Men with Clinically Localized, Surgically Treated Prostate Cancer**
Farzana A. Faisal, Sanjana Murali, Harsimar Kaur, Thiago Vidotto, Liana B. Guedes, Daniela Correia Salles, Vishal Kothari, Jeffrey J. Tosoian, Sumin Han, Daniel H. Hovelson, Kevin Hu, Daniel E. Spratt, Alexander S. Baras, Scott A. Tomlins, Edward M. Schaeffer, and Tamara L. Lotan
- 2603** **Predictive Biomarkers for Adjuvant Capecitabine Benefit in Early-Stage Triple-Negative Breast Cancer in the FinXX Clinical Trial**
Karama Asleh, Heather Ann Brauer, Amy Sullivan, Susanna Lauttia, Henrik Lindman, Torsten O. Nielsen, Heikki Joensuu, E. Aubrey Thompson, and Saranya Chumsri
- TRANSLATIONAL CANCER MECHANISMS AND THERAPY**
- 2615** **Molecular Mechanisms of Acquired Resistance to MET Tyrosine Kinase Inhibitors in Patients with MET Exon 14–Mutant NSCLC**
Gonzalo Recondo, Magda Bahcall, Liam F. Spurr, Jianwei Che, Biagio Ricciuti, Giulia C. Leonardi, Ying-Chun Lo, Yvonne Y. Li, Giuseppe Lamberti, Tom Nguyen, Marina S.D. Milan, Deepti Venkatraman, Renato Umeton, Cloud P. Paweletz, Adem Albayrak, Andrew D. Cherniack, Kristin S. Price, Stephen R. Fairclough, Mizuki Nishino, Lynette M. Sholl, Geoffrey R. Oxnard, Pasi A. Jänne, and Mark M. Awad
- 2626** **Local Intracerebral Immunomodulation Using Interleukin-Expressing Mesenchymal Stem Cells in Glioblastoma**
Malte Mohme, Cecile L. Maire, Ulf Geumann, Simon Schliffke, Lasse Dührsen, Krystian Fita, Nuray Akyüz, Mascha Binder, Manfred Westphal, Christine Guenther, Katrin Lamszus, Felix G. Hermann, and Nils Ole Schmidt
- 2640** **Single-Cell Genomic Characterization Reveals the Cellular Reprogramming of the Gastric Tumor Microenvironment**
Anuja Sathe, Susan M. Grimes, Billy T. Lau, Jiamin Chen, Carlos Suarez, Robert J. Huang, George Poultsides, and Hanlee P. Ji
- 2654** **Tumor Analyses Reveal Squamous Transformation and Off-Target Alterations As Early Resistance Mechanisms to First-line Osimertinib in EGFR-Mutant Lung Cancer**
Adam J. Schoenfeld, Joseph M. Chan, Daisuke Kubota, Hiroki Sato, Hira Rizvi, Yahya Daneshbod, Jason C. Chang, Paul K. Paik, Michael Offin, Maria E. Arcila, Monika A. Davare, Ujwal Shinde, Dana Pe'er, Natasha Rekhtman, Mark G. Kris, Romel Somwar, Gregory J. Riely, Marc Ladanyi, and Helena A. Yu
See related commentary, p. 2441
- 2664** **Determining the Optimal Adjuvant Therapy for Improving Survival in Elderly Patients with Glioblastoma: A Systematic Review and Network Meta-analysis**
Farshad Nassiri, Shervin Taslimi, Justin Z. Wang, Jetan H. Badhiwala, Tatyana Dalcourt, Nazanin Ijad, Neda Pirouzmand, Saleh Almenawer, Roger Stupp, and Gelareh Zadeh
- 2673** **Detection of Molecular Signatures of Homologous Recombination Deficiency in Prostate Cancer with or without BRCA1/2 Mutations**
Zsofia Sztupinszki, Miklos Diossy, Marcin Krzystanek, Judit Borcsok, Mark M. Pomerantz, Viktoria Tisza, Sandor Spisak, Orsolya Ruzs, István Csabai, Matthew L. Freedman, and Zoltan Szallasi
- 2681** **Targeting Super-Enhancer–Associated Oncogenes in Osteosarcoma with THZ2, a Covalent CDK7 Inhibitor**
Jiajun Zhang, Weihai Liu, Changye Zou, Zhiqiang Zhao, Yuanying Lai, Zhi Shi, Xianbiao Xie, Gang Huang, Yongqian Wang, Xuelin Zhang, Zepei Fan, Qiao Su, Junqiang Yin, and Jingnan Shen
- 2693** **Cannabinoids Promote Progression of HPV-Positive Head and Neck Squamous Cell Carcinoma via p38 MAPK Activation**
Chao Liu, Sayed H. Sadat, Koji Ebisumoto, Akihiro Sakai, Bharat A. Panuganti, Shuling Ren, Yusuke Goto, Sunny Haft, Takahito Fukusumi, Mizuo Ando, Yuki Saito, Theresa Guo, Pablo Tamayo, Huwate Yeerna, William Kim, Jacqueline Hubbard, Andrew B. Sharabi, J. Silvio Gutkind, and Joseph A. Califano
- 2704** **Association of Tumor-Infiltrating Lymphocytes with Homologous Recombination Deficiency and BRCA1/2 Status in Patients with Early Triple-Negative Breast Cancer: A Pooled Analysis**
Melinda L. Telli, Charles Chu, Sunil S. Badve, Shaveta Vinayak, Daniel P. Silver, Steven J. Isakoff, Virginia Kaklamani, William Gradishar, Vered Stearns, Roisin M. Connolly, James M. Ford, Joshua J. Gruber, Sylvia Adams, Judy Garber, Nadine Tung, Chris Neff, Ryan Bernhisel, Kirsten M. Timms, and Andrea L. Richardson
- 2711** **A Chimeric Signal Peptide–Galectin-3 Conjugate Induces Glycosylation-Dependent Cancer Cell–Specific Apoptosis**
Sok-Hyong Lee, Fatima Khwaja Rehman, Kari C. Tyler, Bing Yu, Zhaobin Zhang, Satoru Osuka, Abdessamad Zerrouqi, Milota Kaluzova, Costas G. Hadjipanayis, Richard D. Cummings, Jeffrey J. Olson, Narra S. Devi, and Erwin G. Van Meir

TABLE OF CONTENTS

- 2725** **ATP-Citrate Lyase Epigenetically Potentiates Oxidative Phosphorylation to Promote Melanoma Growth and Adaptive Resistance to MAPK Inhibition**
Weinan Guo, Jinyuan Ma, Yuqi Yang, Sen Guo, Weigang Zhang, Tao Zhao, Xiuli Yi, Huina Wang, Shiyu Wang, Yu Liu, Wei Dai, Xuguang Chen, Qiong Shi, Gang Wang, Tianwen Gao, and Chunying Li
- 2740** **Local and Systemic Immune Dysregulation Alters Glioma Growth in Hyperglycemic Mice**
Ian Y. Zhang, Hui Zhou, Huili Liu, Leying Zhang, Hang Gao, Shunan Liu, Yanyan Song, Darya Alizadeh, Hongwei Holly Yin, Raju Pillai, and Behnam Badie
- 2754** **Metabolome Analysis Reveals Excessive Glycolysis via PI3K/AKT/mTOR and RAS/MAPK Signaling in Methotrexate-Resistant Primary CNS Lymphoma-Derived Cells**
Yasuo Takashima, Azusa Hayano, and Ryuya Yamanaka

CORRECTIONS

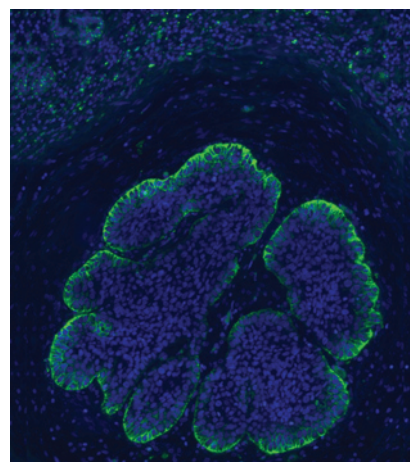
- 2767** **Correction: Editor's Note: Loss of Histone H4K20 Trimethylation Occurs in Preneoplasia and Influences Prognosis of Non-Small Cell Lung Cancer**
Arnaud Van Den Broeck, Elisabeth Brambilla, Denis Moro-Sibilot, Sylvie Lantuejoul, Christian Brambilla, Beatrice Eymin, and Sylvie Gazzeri
- 2768** **Correction: Loss of Histone H4K20 Trimethylation Occurs in Preneoplasia and Influences Prognosis of Non-Small Cell Lung Cancer**
Arnaud Van Den Broeck, Elisabeth Brambilla, Denis Moro-Sibilot, Sylvie Lantuejoul, Christian Brambilla, Beatrice Eymin, and Sylvie Gazzeri

AC AC icon indicates AuthorChoice

For more information please visit www.aacrjournals.org

ABOUT THE COVER

The cover shows distribution of a fluorescently labeled antibody (green) in a tumor cell nest after systemic administration (i.e., *in vivo* immunohistochemistry to trace drug delivery in human tumors) and illustrates that the binding-site barrier is real. For details, see the article by Lu and colleagues on page 2582 of this issue.



Clinical Cancer Research

26 (11)

Clin Cancer Res 2020;26:2437-2768.

Updated version Access the most recent version of this article at:
<http://clincancerres.aacrjournals.org/content/26/11>

E-mail alerts [Sign up to receive free email-alerts](#) related to this article or journal.

Reprints and Subscriptions To order reprints of this article or to subscribe to the journal, contact the AACR Publications Department at pubs@aacr.org.

Permissions To request permission to re-use all or part of this article, use this link <http://clincancerres.aacrjournals.org/content/26/11>.
Click on "Request Permissions" which will take you to the Copyright Clearance Center's (CCC) Rightslink site.