

CLINICAL CANCER RESEARCH

TABLE OF CONTENTS

HIGHLIGHTS

2769 Selected Articles from This Issue

SPECIAL FEATURES

CCR Translations

2771 Personalization of Treatment is the Way Forward in Care and Trials

Laura J. Esserman

See related article, p. 2838

2774 Mechanistic Insights for Optimizing PSMA Radioligand Therapy

Aravind S. Ravi Kumar and Michael S. Hofman

See related article, p. 2946

Review

2777 Radiotherapy and Immunotherapy for Cancer: From “Systemic” to “Multisite”

Ainhoa Arina, Stanley I. Gutiontov, and Ralph R. Weichselbaum

Perspectives

2783 What Is the Real Impact of Estrogen Receptor Status on the Prognosis and Treatment of HER2-Positive Early Breast Cancer?

Mariana Brandão, Rafael Caparica, Luca Malorni, Aleix Prat, Lisa A. Carey, and Martine Piccart

CLINICAL TRIALS: TARGETED THERAPY

2789 ANG1005, a Brain-Penetrating Peptide-Drug Conjugate, Shows Activity in Patients with Breast Cancer with Leptomeningeal Carcinomatosis and Recurrent Brain Metastases

AC Priya Kumthekar, Shou-Ching Tang, Andrew J. Brenner, Santosh Kesari, David E. Piccioni, Carey Anders, Jose Carrillo, Pavani Chalasani, Peter Kabos, Shannon Puhalla, Katherine Tkaczuk, Agustin A. Garcia, Manmeet S. Ahluwalia, Jeffrey S. Wefel, Nehal Lakhani, and Nuha Ibrahim

2800 Pharmacodynamic Analysis of BTK Inhibition in Patients with Chronic Lymphocytic Leukemia Treated with Acalabrutinib

Anfal Alsadhan, Jean Cheung, Michael Gulrajani, Erika M. Gaglione, Pia Nierman, Ahmed Hamdy, Raquel Izumi, Elena Bibikova, Priti Patel, Clare Sun, Todd Covey, Sarah E.M. Herman, and Adrian Wiestner

2810 Phase Ib Study of Tirabrutinib in Combination with Idelalisib or Entospletinib in Previously Treated Chronic Lymphocytic Leukemia

AC Alexey V. Danilov, Charles Herbaux, Harriet S. Walter, Peter Hillmen, Simon A. Rule, Ebenezer A. Kio, Lionel Karlin, Martin J.S. Dyer, Siddhartha S. Mitra, Ping Cheng Yi, Rita Humeniuk, Xi Huang, Ziqian Zhou, Pankaj Bhargava, Juliane M. Jürgensmeier, and Christopher D. Fegan

2819 A Phase I Study of ASTX660, an Antagonist of Inhibitors of Apoptosis Proteins, in Adults with Advanced Cancers or Lymphoma

AC Monica M. Mita, Patricia M. LoRusso, Kyriakos P. Papadopoulos, Michael S. Gordon, Alain C. Mita, Roberta Ferraldeschi, Harold Keer, Aram Oganessian, Xiang Yao Su, Simone Jueliger, and Anthony W. Tolcher

CLINICAL TRIALS: IMMUNOTHERAPY

2827 Phase II Trial of IL-12 Plasmid Transfection and PD-1 Blockade in Immunologically Quiescent Melanoma

Alain P. Algazi, Christopher G. Twitty, Katy K. Tsai, Mai Le, Robert Pierce, Erica Browning, Reneta Hermiz, David A. Canton, Donna Bannavong, Arielle Oglesby, Murray Francisco, Lawrence Fong, Mikael J. Pittet, Sean P. Arlauckas, Christopher Garris, Lauren P. Levine, Carlos Bifulco, Carmen Ballesteros-Merino, Shailender Bhatia, Sharron Gargosky, Robert H.I. Andtbacka, Bernard A. Fox, Michael D. Rosenblum, and Adil I. Daud

TABLE OF CONTENTS

PRECISION MEDICINE AND IMAGING

2838 Pathologic Complete Response after Neoadjuvant Chemotherapy and Impact on Breast Cancer Recurrence and Survival: A Comprehensive Meta-analysis

Laura M. Spring, Geoffrey Fell, Andrea Arfe, Chandni Sharma, Rachel Greenup, Kerry L. Reynolds, Barbara L. Smith, Brian Alexander, Beverly Moy, Steven J. Isakoff, Giovanni Parmigiani, Lorenzo Trippa, and Aditya Bardia

See related commentary, p. 2771

2849 Circulating Tumor DNA Analysis to Assess Risk of Progression after Long-term Response to PD-(L)1 Blockade in NSCLC

Matthew D. Hellmann, Barzin Y. Nabet, Hira Rizvi, Adel A. Chaudhuri, Daniel K. Wells, Mark P.S. Dunphy, Jacob J. Chabon, Chih Long Liu, Angela B. Hui, Kathryn C. Arbour, Jia Luo, Isabel R. Preeshagul, Everett J. Moding, Diego Almanza, Rene F. Bonilla, Jennifer L. Sauter, Hyejin Choi, Megan Tenet, Mohsen Abu-Akeel, Andrew J. Plodkowski, Rocio Perez Johnston, Christopher H. Yoo, Ryan B. Ko, Henning Stehr, Linda Gojenola, Heather A. Wakelee, Sukhmani K. Padda, Joel W. Neal, Jamie E. Chaff, Mark G. Kris, Charles M. Rudin, Taha Merghoub, Bob T. Li, Ash A. Alizadeh, and Maximilian Diehn

2859 The Immune Microenvironment and Neoantigen Landscape of Aggressive Salivary Gland Carcinomas Differ by Subtype

Maximilian Linxweiler, Fengshen Kuo, Nora Katabi, Mark Lee, Zaineb Nadeem, Martin G. Dalin, Vladimir Makarov, Diego Chowell, Snjezana Dogan, Ian Ganly, A. Ari Hakimi, Richard J. Wong, Nadeem Riaz, Alan L. Ho, Timothy A. Chan, and Luc G.T. Morris

2871 Targeted Brain Tumor Radiotherapy Using an Auger Emitter

A C

Giacomo Pirovano, Stephen A. Jannetti, Lukas M. Carter, Ahmad Sadique, Susanne Kossatz, Navjot Guru, Paula Demétrio De Souza França, Masatomo Maeda, Brian M. Zeglis, Jason S. Lewis, John L. Humm, and Thomas Reiner

2882 Genomic and Immunologic Characterization of INI1-Deficient Pediatric Cancers

A C

Suzanne J. Forrest, Alyaa Al-Ibraheemi, Duong Doan, Abigail Ward, Catherine M. Clinton, Juan Putra, R. Seth Pinches, Cigall Kadoch, Susan N. Chi, Steven G. DuBois, Patrick J. Leavey, Nicole R. LeBoeuf, Elizabeth Mullen, Natalie Collins, Alanna J. Church, and Katherine A. Janeway

2891 Genomic Variants of Cytarabine Sensitivity Associated with Treatment-Related Mortality in Pediatric AML: A Report from the Children's Oncology Group

Christine L. Phillips, Adam Lane, Robert B. Gerbing, Todd A. Alonzo, Alyss Wilkey, Gretchen Radloff, Beverly Lange, Eric R. Gamazon, M. Eileen Dolan, and Stella M. Davies

2898 A Quantitative Centrosomal Amplification Score Predicts Local Recurrence of Ductal Carcinoma *In Situ*

A C

Karuna Mittal, Michael S. Toss, Guanhao Wei, Jaspreet Kaur, Da Hoon Choi, Brian D. Melton, Remus M. Osan, Islam M. Miligy, Andrew R. Green, Emiel A.M. Janssen, Håvard Søliland, Keerthi Gogineni, Upender Manne, Padmashree Rida, Emad A. Rakha, and Ritu Aneja

2908 Multifactorial Deep Learning Reveals Pan-Cancer Genomic Tumor Clusters with Distinct Immunogenomic Landscape and Response to Immunotherapy

Feng Xie, Jianjun Zhang, Jiayin Wang, Alexandre Reuben, Wei Xu, Xin Yi, Frederick S. Varn, Yongsheng Ye, Junwen Cheng, Miao Yu, Yue Wang, Yufeng Liu, Mingchao Xie, Peng Du, Ke Ma, Xin Ma, Penghui Zhou, Shengli Yang, Yaobing Chen, Guoping Wang, Xuefeng Xia, Zhongxing Liao, John V. Heymach, Ignacio I. Wistuba, P. Andrew Futreal, Kai Ye, Chao Cheng, and Tian Xia

2921 Periostin and Epithelial-Mesenchymal Transition Score as Novel Prognostic Markers for Leiomyosarcoma, Myxofibrosarcoma, and Undifferentiated Pleomorphic Sarcoma

Maria Assunta Piano, Antonella Brunello, Rocco Cappellesso, Paola Del Bianco, Adriana Mattiolo, Chiara Fritegotto, Barbara Montini, Carolina Zamuner, Paolo Del Fiore, Marco Rastrelli, Antonio Sommariva, Gian Luca De Salvo, Maria Cristina Montesco, Carlo Riccardo Rossi, Vittorina Zagonel, and Maria Luisa Calabrò

TRANSLATIONAL CANCER MECHANISMS AND THERAPY

2932 MAPK Pathway Alterations Correlate with Poor Survival and Drive Resistance to Therapy in Patients with Lung Cancers Driven by *ROS1* Fusions

Hiroki Sato, Adam J. Schoenfeld, Evan Siau, Yue Christine Lu, Huichun Tai, Ken Suzawa, Daisuke Kubota, Allan J.W. Lui, Besnik Qeriqi, Marissa Mattar, Michael Offin, Masakiyo Sakaguchi, Shinichi Toyooka, Alexander Drilon, Neal X. Rosen, Mark G. Kris, David Solit, Elisa De Stanchina, Monika A. Davare, Gregory J. Riely, Marc Ladanyi, and Romel Somwar

TABLE OF CONTENTS

- 2946** **Investigating PSMA-Targeted Radioligand Therapy Efficacy as a Function of Cellular PSMA Levels and Intratumoral PSMA Heterogeneity**
Kyle Current, Catherine Meyer, Clara E. Magyar, Christine E. Mona, Joel Almajano, Roger Slavik, Andreea D. Stuparu, Chloe Cheng, David W. Dawson, Caius G. Radu, Johannes Czernin, and Katharina Lueckerath
See related commentary, p. 2774
- 2956** **PI3K Inhibitors Curtail MYC-Dependent Mutant p53 Gain-of-Function in Head and Neck Squamous Cell Carcinoma**
Federica Ganci, Claudio Pulito, Sara Valsoni, Andrea Sacconi, Chiara Turco, Mahrou Vahabi, Valentina Manciooco, Emilia Maria Cristina Mazza, Jalna Meens, Christina Karamboulas, Anthony C. Nichols, Renato Covello, Raul Pellini, Giuseppe Spriano, Giuseppe Sanguineti, Paola Muti, Silvio Bicciato, Laurie Ailles, Sabrina Strano, Giulia Fontemaggi, and Giovanni Blandino
- 2972** **Induced Tumor Heterogeneity Reveals Factors Informing Radiation and Immunotherapy Combinations**
Todd A. Aguilera, Eslam A. Elghonaimy, Hussein Shehade, Marjan Rafat, Laura Castellini, Dadi Jiang, Mihalis Kariolis, Albert C. Koong, Quynh-Thu Le, Lesley G. Ellies, Erinn B. Rankin, Edward E. Graves, and Amato J. Giaccia
- 2986** **Anastrozole has an Association between Degree of Estrogen Suppression and Outcomes in Early Breast Cancer and is a Ligand for Estrogen Receptor α**
AC James N. Ingle, Junmei Cairns, Vera J. Suman, Lois E. Shepherd, Peter A. Fasching, Tanya L. Hoskin, Ravinder J. Singh, Zeruesenay Desta, Krishna R. Kalari, Matthew J. Ellis, Paul E. Goss, Bingshu E. Chen, Bernhard Volz, Poulami Barman, Erin E. Carlson, Tufia Haddad, Matthew P. Goetz, Barbara Goodnature, Matthew E. Cuellar, Michael A. Walters, Cristina Correia, Scott H. Kaufmann, Richard M. Weinshilboum, and Liewei Wang
- 2997** **RABL6A Is an Essential Driver of MPNSTs that Negatively Regulates the RB1 Pathway and Sensitizes Tumor Cells to CDK4/6 Inhibitors**
Jordan L. Kohlmeyer, Courtney A. Kaemmer, Casey Pulliam, Chandra K. Maharjan, Allison Moreno Samayoa, Heather J. Major, Kendall E. Cornick, Vickie Knepper-Adrian, Rajesh Khanna, Jessica C. Sieren, Mariah R. Leidinger, David K. Meyerholz, K.D. Zamba, Jill M. Weimer, Rebecca D. Dodd, Benjamin W. Darbro, Munir R. Tanas, and Dawn E. Quelle
- 3012** **Evaluation of Eribulin Combined with Irinotecan for Treatment of Pediatric Cancer Xenografts**
Andrew J. Robles, Raushan T. Kurmasheva, Abhik Bandyopadhyay, Doris A. Phelps, Stephen W. Erickson, Zhao Lai, Dias Kurmashev, Yidong Chen, Malcom A. Smith, and Peter J. Houghton
- 3024** **The Effects of a Remote-based Weight Loss Program on Adipocytokines, Metabolic Markers, and Telomere Length in Breast Cancer Survivors: the POWER-Remote Trial**
Cesar A. Santa-Maria, Janelle W. Coughlin, Dipali Sharma, Mary Armanios, Amanda L. Blackford, Colleen Schreyer, Arlene Dalcin, Ashley Carpenter, Gerald J. Jerome, Deborah K. Armstrong, Madhu Chaudhry, Gary I. Cohen, Roisin M. Connolly, John Fetting, Robert S. Miller, Karen L. Smith, Claire Snyder, Andrew Wolfe, Antonio C. Wolff, Chiung-Yu Huang, Lawrence J. Appel, and Vered Stearns
- 3035** **A Randomized Controlled Trial of a 6-Month Low-Carbohydrate Intervention on Disease Progression in Men with Recurrent Prostate Cancer: Carbohydrate and Prostate Study 2 (CAPS2)**
Stephen J. Freedland, Jenifer Allen, Aubrey Jarman, Taofik Oyekunle, Andrew J. Armstrong, Judd W. Moul, Howard M. Sandler, Edwin Posadas, Dana Levin, Emily Wiggins, Lauren E. Howard, Yuan Wu, and Pao-Hwa Lin
- 3044** **Gefitinib and Afatinib Show Potential Efficacy for Fanconi Anemia-Related Head and Neck Cancer**
Helena Montanuy, Águeda Martínez-Barriocanal, José Antonio Casado, Llorenç Roviro, Maria José Ramirez, Rocío Nieto, Carlos Carrascoso-Rubio, Pau Riera, Alan González, Enrique Lerma, Adriana Lasa, Jordi Carreras-Puigvert, Thomas Helleday, Juan A. Bueren, Diego Arango, Jordi Minguillón, and Jordi Surrallés
- 3058** **PARP Inhibition Enhances Radiotherapy of SMAD4-Deficient Human Head and Neck Squamous Cell Carcinomas in Experimental Models**
Ariel L. Hernandez, Christian D. Young, Li Bian, Kelsey Weigel, Kyle Nolan, Barbara Frederick, Gangwen Han, Guanting He, G. Devon Trahan, Michael C. Rudolph, Kenneth L. Jones, Ayman J. Oweida, Sana D. Karam, David Raben, and Xiao-Jing Wang

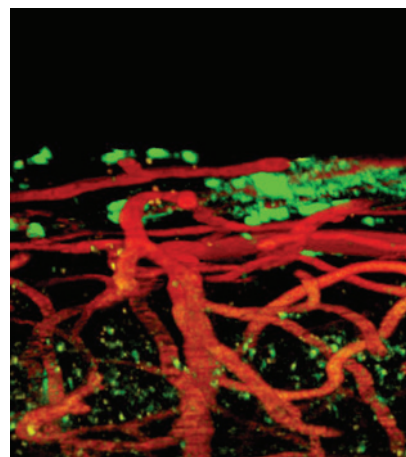
AC AC icon indicates AuthorChoice

For more information please visit www.aacrjournals.org

TABLE OF CONTENTS

ABOUT THE COVER

The cover shows intravital imaging of living mouse brain (courtesy of S. Rivest and P. Préfontaine, Laval University) 5 days after intravenous administration of an LRP-1 binding peptide, Angiopep-2 that has been conjugated with a fluorescent tag that appears green. The imaging shows significant extravascular accumulation of the peptide in the brain meninges (top) and parenchyma, demonstrating its passage across the blood-brain and blood-CSF barriers. For details, see the article by Kumthekar and colleagues on page 2789 of this issue.



Clinical Cancer Research

26 (12)

Clin Cancer Res 2020;26:2769-3070.

Updated version Access the most recent version of this article at:
<http://clincancerres.aacrjournals.org/content/26/12>

E-mail alerts [Sign up to receive free email-alerts](#) related to this article or journal.

Reprints and Subscriptions To order reprints of this article or to subscribe to the journal, contact the AACR Publications Department at pubs@aacr.org.

Permissions To request permission to re-use all or part of this article, use this link <http://clincancerres.aacrjournals.org/content/26/12>. Click on "Request Permissions" which will take you to the Copyright Clearance Center's (CCC) Rightslink site.