

## CLINICAL CANCER RESEARCH

## TABLE OF CONTENTS

## HIGHLIGHTS

3497 Selected Articles from This Issue

## SPECIAL FEATURES

## CCR Translations

3499 Role of MPR as an Early Signal for Efficacy in Neoadjuvant Studies

Collin M. Blakely and Caroline E. McCoach

See related article, p. 3525

3501 Collectively Answering the Venetoclax BTK Inhibitor Sequencing Question in CLL

Kerry A. Rogers

See related article, p. 3589

3503 Improving AML Classification Using Splicing Signatures

Teresa V. Bowman

See related article, p. 3597

## Review

3505 Dissecting the Tumor-Immune Landscape in Chimeric Antigen Receptor T-cell Therapy: Key Challenges and Opportunities for a Systems Immunology Approach

**A C**

Gregory M. Chen, Andrew Azzam, Yang-Yang Ding, David M. Barrett, Stephan A. Grupp, and Kai Tan

## Perspectives

3514 BTK Inhibitors in Cancer Patients with COVID-19: "The Winner Will be the One Who Controls That Chaos" (Napoleon Bonaparte)

Elise A. Chong, Lindsey E. Roeker, Mazyar Shadman, Matthew S. Davids, Stephen J. Schuster, and Anthony R. Mato

## CLINICAL TRIALS: TARGETED THERAPY

3517 Pharmacokinetics, Safety, and Antitumor Effect of Apalutamide with Abiraterone Acetate plus Prednisone in Metastatic Castration-Resistant Prostate Cancer: Phase Ib Study

Edwin M. Posadas, Kim N. Chi, Ronald de Wit, Maja J.A. de Jonge, Gerhardt Attard, Terence W. Friedlander, Margaret K. Yu, Peter Hellemans, Caly Chien, Charlene Abrams, Juhui J. Jiao, and Fred Saad

3525 A Phase I/II Study of Neoadjuvant Cisplatin, Docetaxel, and Nintedanib for Resectable Non-Small Cell Lung Cancer

**A C**

Tina Cascone, Boris Sepesi, Heather Y. Lin, Neda Kalhor, Edwin R. Parra, Mei Jiang, Myrna C.B. Godoy, Jianjun Zhang, Frank V. Fossella, Anne S. Tsao, Vincent K. Lam, Charles Lu, Frank E. Mott, George R. Simon, Mara B. Antonoff, Reza J. Mehran, David C. Rice, Carmen Behrens, Annikka Weissferdt, Cesar Moran, Ara A. Vaporciyan, J. Jack Lee, Stephen G. Swisher, Don L. Gibbons, Ignacio I. Wistuba, William N. William Jr., and John V. Heymach

See related commentary, p. 3499

3537 Intratumoral Comparison of Nanoparticle Entrapped Docetaxel (CPC634) with Conventional Docetaxel in Patients with Solid Tumors

Florence Atrafi, Ruben A.G. van Eerden, Marte A.M van Hylckama Vlieg, Esther Oomen-de Hoop, Peter de Bruijn, Martijn P. Lolkema, Adriaan Moelker, Cristianne J. Rijcken, Rob Hanssen, Alex Sparreboom, Ferry A.L.M. Eskens, Ron H.J. Mathijssen, and Stijn L.W. Koolen

# TABLE OF CONTENTS

## 3546 **Phase I Study of TAK-659, an Investigational, Dual SYK/FLT3 Inhibitor, in Patients with B-Cell Lymphoma**

**A C** Leo I. Gordon, Jason B. Kaplan, Rakesh Popat, Howard A. Burris III, Silvia Ferrari, Sumit Madan, Manish R. Patel, Giuseppe Gritti, Dima El-Sharkawi, Ian Chau, John A. Radford, Jaime Pérez de Oteyza, Pier Luigi Zinzani, Swaminathan Iyer, William Townsend, Reem Karmali, Harry Miao, Igor Proscurshim, Shining Wang, Yujun Wu, Kate Stumpo, Yaping Shou, Cecilia Carpio, and Francesc Bosch

## 3557 **Phase II Study of Ensitumab, a Novel Chimeric Monoclonal Antibody, in Adults with Unresectable, Metastatic Colorectal Cancer**

Richard D. Kim, Nilofer S. Azad, Michael A. Morse, Elizabeth Poplin, Amit Mahipal, Benjamin Tan Jr, Sharon A. Mavroukakis, Massimo Fantini, Kwong Y. Tsang, Anjum Zaki, Jose Torrealba, Philip M. Arlen, and Muhammad S. Beg

## CLINICAL TRIALS: IMMUNOTHERAPY

### 3565 **Glioblastoma-mediated Immune Dysfunction Limits CMV-specific T Cells and Therapeutic Responses: Results from a Phase I/II Trial**

Shiao-Pei Weathers, Marta Penas-Prado, Be-Lian Pei, Xiaoyang Ling, Cynthia Kassab, Pinaki Banerjee, Mustafa Bdiwi, Hila Shaim, Abdullah Alsuliman, Mayra Shanley, John F. de Groot, Barbara J. O'Brien, Rebecca Harrison, Nazanin Majd, Carlos Kamiya-Matsuoka, Gregory N. Fuller, Jason T. Huse, Linda Chi, Ganesh Rao, Jeffrey S. Weinberg, Frederick F. Lang, Raymond Sawaya, Elizabeth J. Shpall, Katayoun Rezvani, and Amy B. Heimberger

### 3578 **Evaluation of Cyclophosphamide/GVAX Pancreas Followed by Listeria-Mesothelin (CRS-207) with or without Nivolumab in Patients with Pancreatic Cancer**

Takahiro Tsujikawa, Todd Crocenzi, Jennifer N. Durham, Elizabeth A. Sugar, Annie A. Wu, Beth Onners, Julie M. Nauroth, Robert A. Anders, Elana J. Fertig, Daniel A. Laheru, Kim Reiss, Robert H. Vonderheide, Andrew H. Ko, Margaret A. Tempero, George A. Fisher, Michael Considine, Ludmila Danilova, Dirk G. Brockstedt, Lisa M. Coussens, Elizabeth M. Jaffee, and Dung T. Le

## PRECISION MEDICINE AND IMAGING

### 3589 **Assessment of the Efficacy of Therapies Following Venetoclax Discontinuation in CLL Reveals BTK Inhibition as an Effective Strategy**

Anthony R. Mato, Lindsey E. Roeker, Ryan Jacobs, Brian T. Hill, Nicole Lamanna, Danielle Brander, Mazyar Shadman, Chaitra S. Ujjani, Maryam Sarraf Yazdy, Guilherme Fleury Perini, Javier A. Pinilla-Ibarz, Jacqueline Barrientos, Alan P. Skarbnik, Pallawi Torka, Jeffrey J. Pu, John M. Pagel, Satyen Gohil, Bitu Fakhri, Michael Choi, Catherine C. Coombs, Joanna Rhodes, Paul M. Barr, Craig A. Portell, Helen Parry, Christine A. Garcia, Kate J. Whitaker, Allison M. Winter, Andrea Sitlinger, Sirin Khajavian, Ariel F. Grajales-Cruz, Krista M. Isaac, Pratik Shah, Othman S. Akhtar, Rachael Pocock, Kentson Lam, Timothy J. Voorhees, Stephen J. Schuster, Thomas D. Rodgers, Christopher P. Fox, Nicolas Martinez-Calle, Talha Munir, Erica B. Bhavsar, Neil Bailey, Jason C. Lee, Hanna B. Weissbrot, Chadi Nabhan, Julie M. Goodfriend, Amber C. King, Andrew D. Zelenetz, Colleen Dorsey, Kayla Bigelow, Bruce D. Cheson, John N. Allan, and Toby A. Eyre  
See related commentary, p. 3501

### 3597 **RNA Splicing Alterations Induce a Cellular Stress Response Associated with Poor Prognosis in Acute Myeloid Leukemia**

Govardhan Anande, Nandan P. Deshpande, Sylvain Mareschal, Aarif M.N. Batcha, Henry R. Hampton, Tobias Herold, Soren Lehmann, Marc R. Wilkins, Jason W.H. Wong, Ashwin Unnikrishnan, and John E. Pimanda  
See related commentary, p. 3503

### 3608 **Theranostic Targeting of CUB Domain Containing Protein 1 (CDCP1) in Pancreatic Cancer**

Anna Moroz, Yung-Hua Wang, Jeremy M. Sharib, Junnian Wei, Ning Zhao, Yangjie Huang, Zhuo Chen, Alexander J. Martinko, Jie Zhuo, Shion A. Lim, Lydia H. Zhang, Youngho Seo, Sean Carlin, Kevin K. Leung, Eric A. Collisson, Kimberly S. Kirkwood, James A. Wells, and Michael J. Evans

### 3616 **Integrative Analysis of Multi-omics Data Identified EGFR and PTGS2 as Key Nodes in a Gene Regulatory Network Related to Immune Phenotypes in Head and Neck Cancer**

Bohai Feng, Ying Shen, Xavier Pastor Hostench, Matthias Bieg, Michaela Plath, Naveed Ishaque, Roland Eils, Kolja Freier, Wilko Weichert, Karim Zaoui, and Jochen Hess

# TABLE OF CONTENTS

- 3629** **Comprehensive Genomic Analysis of Translocation Renal Cell Carcinoma Reveals Copy-Number Variations as Drivers of Disease Progression**  
Julian Marcon, Renzo G. DiNatale, Alejandro Sanchez, Ritesh R. Kotecha, Sounak Gupta, Fengshen Kuo, Vladimir Makarov, Amar Sandhu, Roy Mano, Andrew W. Silagy, Kyle A. Blum, Daniel E. Nassau, Nicole E. Benfante, Michael V. Ortiz, Maria I. Carlo, Timothy A. Chan, Robert J. Motzer, Martin H. Voss, Jonathan Coleman, Paul Russo, Victor Reuter, A. Ari Hakimi, and Ed Reznik
- 3641** **A 15-Gene Immune, Stromal, and Proliferation Gene Signature that Significantly Associates with Poor Survival in Patients with Pancreatic Ductal Adenocarcinoma**  
Raju Kandimalla, Hideo Tomihara, Jasjit K. Banwait, Kensuke Yamamura, Gagandeep Singh, Hideo Baba, and Ajay Goel
- 3649** **Identification of Deleterious *NOTCH* Mutation as Novel Predictor to Efficacious Immunotherapy in NSCLC**  
**A C** Kai Zhang, Xiaohua Hong, Zhengbo Song, Yu Xu, Chengcheng Li, Guoqiang Wang, Yuzi Zhang, Xiaochen Zhao, Zhengyi Zhao, Jing Zhao, Mengli Huang, Depei Huang, Chuang Qi, Chan Gao, Shangli Cai, Feifei Gu, Yue Hu, Chunwei Xu, Wenxian Wang, Zhenkun Lou, Yong Zhang, and Li Liu
- 3662** **Medium-throughput Drug Screening of Patient-derived Organoids from Colorectal Peritoneal Metastases to Direct Personalized Therapy**  
Vignesh Narasimhan, Josephine A. Wright, Michael Churchill, Tongtong Wang, Rachele Rosati, Tamsin R.M. Lannagan, Laura Vrbanac, Anne B. Richardson, Hiroki Kobayashi, Timothy Price, Gayle X.Y. Tye, Julie Marker, Peter J. Hewett, Michael P. Flood, Shalini Pereira, G. Adam Whitney, Michael Michael, Jeanne Tie, Siddhartha Mukherjee, Carla Grandori, Alexander G. Heriot, Daniel L. Worthley, Robert G. Ramsay, and Susan L. Woods
- 3682** **Whole-Exome Sequencing Analysis of the Progression from Non-Low-Grade Ductal Carcinoma *In Situ* to Invasive Ductal Carcinoma**  
Fresia Pareja, David N. Brown, Ju Youn Lee, Arnaud Da Cruz Paula, Pier Selenica, Rui Bi, Felipe C. Geyer, Andrea Gazzo, Edaise M. da Silva, Mahsa Vahdatinia, Anthe A. Stylianou, Lorenzo Ferrando, Hannah Y. Wen, James B. Hicks, Britta Weigelt, and Jorge S. Reis-Filho
- 3694** **A Humanized Lym-1 CAR with Novel DAP10/DAP12 Signaling Domains Demonstrates Reduced Tonic Signaling and Increased Antitumor Activity in B-Cell Lymphoma Models**  
Long Zheng, Luqing Ren, Aida Kouhi, Leslie A. Khawli, Peisheng Hu, Harvey R. Kaslow, and Alan L. Epstein
- 3707** **AMPK Activation by Metformin Promotes Survival of Dormant ER<sup>+</sup> Breast Cancer Cells**  
Riley A. Hampsch, Jason D. Wells, Nicole A. Traphagen, Charlotte F. McCleery, Jennifer L. Fields, Kevin Shee, Lloye M. Dillon, Darcy B. Pooler, Lionel D. Lewis, Eugene Demidenko, Yina H. Huang, Jonathan D. Marotti, Abigail E. Goen, William B. Kinlaw, and Todd W. Miller
- 3720** **Genetic Alterations in the PI3K/AKT Pathway and Baseline AKT Activity Define AKT Inhibitor Sensitivity in Breast Cancer Patient-derived Xenografts**  
Albert Gris-Oliver, Marta Palafox, Laia Monserrat, Fara Brasó-Maristany, Andreu Òdena, Mònica Sánchez-Guixé, Yasir H. Ibrahim, Guillermo Villacampa, Judit Grueso, Mireia Parés, Marta Guzmán, Olga Rodríguez, Alejandra Bruna, Caroline S. Hirst, Alan Barnicle, Elza C. de Bruin, Avinash Reddy, Gaia Schiavon, Joaquín Arribas, Gordon B. Mills, Carlos Caldas, Rodrigo Dienstmann, Alex Prat, Paolo Nuciforo, Pedram Razavi, Maurizio Scaltriti, Nicholas C. Turner, Cristina Saura, Barry R. Davies, Mafalda Oliveira, and Violeta Serra
- 3732** ***TP53* Mutations Predict Sensitivity to Adjuvant Gemcitabine in Patients with Pancreatic Ductal Adenocarcinoma: Next-Generation Sequencing Results from the CONKO-001 Trial**  
Marianne Sinn, Bruno V. Sinn, Denise Treue, Ulrich Keilholz, Frederik Damm, Rosa Schmuck, Philipp Lohneis, Frederick Klauschen, Jana K. Striefler, Marcus Bahra, Hendrik Bläker, Sven Bischoff, Uwe Pelzer, Helmut Oettle, Hanno Riess, Jan Budczies, and Carsten Denkert
- 3740** **Wee1 Kinase Inhibitor AZD1775 Effectively Sensitizes Esophageal Cancer to Radiotherapy**  
Linlin Yang, Changxian Shen, Cory J. Pettit, Tianyun Li, Andrew J. Hu, Eric D. Miller, Junran Zhang, Steven H. Lin, and Terence M. Williams
- TRANSLATIONAL CANCER MECHANISMS AND THERAPY**
- 3671** **Tumor CD155 Expression Is Associated with Resistance to Anti-PD1 Immunotherapy in Metastatic Melanoma**  
Ailin Lepletier, Jason Madore, Jake S. O'Donnell, Rebecca L. Johnston, Xian-Yang Li, Elizabeth McDonald, Elizabeth Ahern, Anna Kuchel, Melissa Eastgate, Sally-Ann Pearson, Domenico Mallardo, Paolo A. Ascierto, Daniela Massi, Barbara Merelli, Mario Mandala, James S. Wilmott, Alexander M. Menzies, Charles Leduc, John Stagg, Bertrand Routy, Georgina V. Long, Richard A. Scolyer, Tobias Bald, Nicola Waddell, William C. Dougall, Michele W.L. Teng, and Mark J. Smyth

# TABLE OF CONTENTS

- 3751**     **The Pharmacokinetic-Pharmacodynamic (PKPD) Relationships of AZD3229, a Novel and Selective Inhibitor of KIT, in a Range of Mouse Xenograft Models of GIST**  
**A C**     Venkatesh Pilla Reddy, Rana Anjum, Michael Grondine, Aaron Smith, Deepa Bhavsar, Evan Barry, Sylvie M. Guichard, Wenlin Shao, Jason G. Kettle, Crystal Brown, Erica Banks, and Rhys D.O. Jones
- 3760**     **A CpG Methylation Classifier to Predict Relapse in Adults with T-Cell Lymphoblastic Lymphoma**  
**A C**     Xiao-Peng Tian, Ning Su, Liang Wang, Wei-Juan Huang, Yan-Hui Liu, Xi Zhang, Hui-Qiang Huang, Tong-Yu Lin, Shu-Yun Ma, Hui-Lan Rao, Mei Li, Fang Liu, Fen Zhang, Li-Ye Zhong, Li Liang, Xiao-Liang Lan, Juan Li, Bing Liao, Zhi-Hua Li, Qiong-Lan Tang, Qiong Liang, Chun-Kui Shao, Qiong-Li Zhai, Run-Fen Cheng, Qi Sun, Kun Ru, Xia Gu, Xi-Na Lin, Kun Yi, Yue-Rong Shuang, Xiao-Dong Chen, Wei Dong, Cai Sun, Wei Sang, Hui Liu, Zhi-Gang Zhu, Jun Rao, Qiao-Nan Guo, Ying Zhou, Xiang-Ling Meng, Yong Zhu, Chang-Lu Hu, Yi-Rong Jiang, Ying Zhang, Hong-Yi Gao, Wen-Jun He, Zhong-Jun Xia, Xue-Yi Pan, Lan Hai, Guo-Wei Li, Li-Yan Song, Tie-Bang Kang, Dan Xie, and Qing-Qing Cai
- 3771**     **Microtubule Engagement with Taxane Is Altered in Taxane-Resistant Gastric Cancer**  
Giuseppe Galletti, Chao Zhang, Ada Gjyrezi, Kyle Cleveland, Jiaren Zhang, Sarah Powell, Prashant V. Thakkar, Doron Betel, Manish A. Shah, and Paraskevi Giannakakou
- 3784**     **The Impact of Molecular Subtype on Efficacy of Chemotherapy and Checkpoint Inhibition in Advanced Gastric Cancer**  
Yohei Kubota, Akihito Kawazoe, Akinori Sasaki, Saori Mishima, Kentaro Sawada, Yoshiaki Nakamura, Daisuke Kotani, Yasutoshi Kuboki, Hiroya Taniguchi, Takashi Kojima, Toshihiko Doi, Takayuki Yoshino, Genichiro Ishii, Takeshi Kuwata, and Kohei Shitara
- 3791**     **Adenocarcinoma of the Uterine Cervix Shows Impaired Recruitment of cDC1 and CD8<sup>+</sup> T Cells and Elevated  $\beta$ -Catenin Activation Compared with Squamous Cell Carcinoma**  
Jossie Rotman, A. Marijne Heeren, Awa A. Gassama, Sinead M. Loughheed, Noëlle Pocorni, Anita G.M. Stam, Maaïke C.G. Bleeker, Henry J.M.A.A. Zijlmans, Constantijne H. Mom, Gemma G. Kenter, Ekaterina S. Jordanova, and Tanja D. de Gruijll
- 3803**     **Metastatic Melanoma Patient-Derived Xenografts Respond to MDM2 Inhibition as a Single Agent or in Combination with BRAF/MEK Inhibition**  
Rebecca L. Shattuck-Brandt, Sheau-Chiann Chen, Emily Murray, Christopher Andrew Johnson, Holly Crandall, Jamye F. O'Neal, Rami Nayef Al-Rohil, Caroline A. Nebhan, Vijaya Bharti, Kimberly B. Dahlman, Gregory D. Ayers, Chi Yan, Mark C. Kelley, Rondi M. Kauffmann, Mary Hooks, Ana Grau, Douglas B. Johnson, Anna E. Vilgelm, and Ann Richmond
- 3819**     **Telomerase Reverse Transcriptase Promoter Mutations Identify a Genomically Defined and Highly Aggressive Human Pleural Mesothelioma Subgroup**  
Christine Pirker, Agnes Bilecz, Michael Grusch, Thomas Mohr, Barbara Heidenreich, Viktoria Laszlo, Paul Stockhammer, Daniela Lötsch-Gojo, Johannes Gojo, Lisa Gabler, Sabine Spiegl-Kreinecker, Balazs Dome, Ariane Steindl, Thomas Klikovits, Mir Alireza Hoda, Marko Jakopovic, Miroslav Samarzija, Katja Mohorcic, Izidor Kern, Barbara Kiesel, Luka Brcic, Felicitas Oberndorfer, Leonhard Müllauer, Walter Klepetko, Wolfgang M. Schmidt, Rajiv Kumar, Balazs Hegedus, and Walter Berger
- 3831**     **Targeting Endoglin-Expressing Regulatory T Cells in the Tumor Microenvironment Enhances the Effect of PD1 Checkpoint Inhibitor Immunotherapy**  
Mark J.A. Schoonderwoerd, Maaïke F.M. Koops, Ricardo A. Angela, Bryan Koolmoes, Melpomeni Toitou, Madelon Paauwe, Marieke C. Barnhoorn, Yingmiao Liu, Cornelis F.M. Sier, James C.H. Hardwick, Andrew B. Nixon, Charles P. Theuer, Marieke F. Fransen, and Lukas J.A.C. Hawinkels
- 3843**     **DGKA Provides Platinum Resistance in Ovarian Cancer Through Activation of c-JUN-WEE1 Signaling**  
Jie Li, Chaoyun Pan, Austin C. Boese, JiHoon Kang, Anna D. Umamo, Kelly R. Magliocca, Wenqing Yang, Yu Zhang, Sagar Lonial, Lingtao Jin, and Sumin Kang
- 3856**     **AMG-176, an Mcl-1 Antagonist, Shows Preclinical Efficacy in Chronic Lymphocytic Leukemia**  
Xue Yi, Alope Sarkar, Gorkem Kismali, Burcu Aslan, Mary Ayres, LaKesla R. Iles, Michael J. Keating, William G. Wierda, James P. Long, Maria Teresa Sabrina Bertilaccio, and Varsha Gandhi
- 3868**     **Therapeutic Targeting of SDHB-Mutated Pheochromocytoma/Paraganglioma with Pharmacologic Ascorbic Acid**  
Yang Liu, Ying Pang, Boqun Zhu, Ondrej Uher, Veronika Caisova, Thanh-Truc Huynh, David Taieb, Katerina Hadrava Vanova, Hans Kumar Ghayee, Jiri Neuzil, Mark Levine, Chunzhang Yang, and Karel Pacak

# TABLE OF CONTENTS

- 3881**     **Genomic Landscape of Uterine Sarcomas Defined Through Prospective Clinical Sequencing**  
Martee L. Hensley, Shweta S. Chavan, David B. Solit, Rajmohan Murali, Robert Soslow, Sarah Chiang, Achim A. Jungbluth, Chaitanya Bandlamudi, Preethi Srinivasan, William D. Tap, Evan Rosenbaum, Barry S. Taylor, Mark T.A. Donoghue, and David M. Hyman

## LETTERS TO THE EDITOR

- 3889**     **5-FU, Irinotecan, Nab-Paclitaxel in Gastrointestinal Cancers—Letter**  
Osamu Maeda, Tomoya Shimokata, and Yuichi Ando

- 3890**     **5-FU, Irinotecan, Nab-Paclitaxel in Gastrointestinal Cancers—Response**  
Manish R. Sharma, Smita S. Joshi, and Hedy L. Kindler

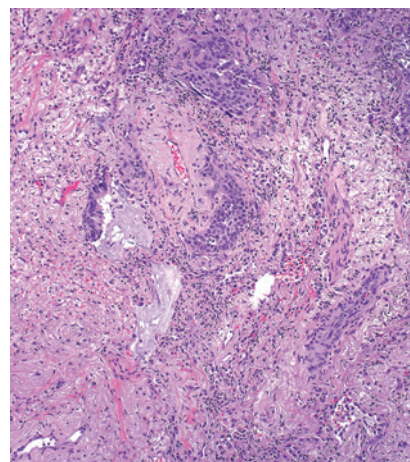
- 3891**     **Predicted Prognosis of Pancreatic Cancer Patients by Machine Learning—Letter**  
Julius M. Kernbach and Victor E. Staartjes

- 3892**     **Atezolizumab Plus Nab-paclitaxel in PD-L1-Positive TNBC—Letter**  
Sara Bravaccini, Sara Ravaioli, Maria Maddalena Tumedei, Andrea Rocca, Michela Palleschi, Maurizio Puccetti, Paola Parrella, Mattia Altini, and Roberta Maltoni

**AC** icon indicates AuthorChoice  
For more information please visit [www.aacrjournals.org](http://www.aacrjournals.org)

## ABOUT THE COVER

The cover shows a high magnification microscopic image of the tumor bed from a patient with resected non-small cell lung cancer treated with neoadjuvant nintedanib plus chemotherapy. The image demonstrates approximately 40% residual viable tumor with a mixed inflammatory infiltrate and marked fibroelastotic changes following treatment. For details, see the article by Cascone and colleagues on page 3525 of this issue.



# Clinical Cancer Research

**26 (14)**

*Clin Cancer Res* 2020;26:3497-3893.

**Updated version** Access the most recent version of this article at:  
<http://clincancerres.aacrjournals.org/content/26/14>

**E-mail alerts** [Sign up to receive free email-alerts](#) related to this article or journal.

**Reprints and Subscriptions** To order reprints of this article or to subscribe to the journal, contact the AACR Publications Department at [pubs@aacr.org](mailto:pubs@aacr.org).

**Permissions** To request permission to re-use all or part of this article, use this link <http://clincancerres.aacrjournals.org/content/26/14>.  
Click on "Request Permissions" which will take you to the Copyright Clearance Center's (CCC) Rightslink site.