

CLINICAL CANCER RESEARCH

TABLE OF CONTENTS

HIGHLIGHTS

6399 Selected Articles from This Issue

SPECIAL FEATURES

CCR Translations

6401 **A Space-Time Continuum for Immunotherapy Biomarkers in Gastroesophageal Cancer?**
Samuel J. Klempner, Vivek Upadhyay, and Joseph Chao
See related article, p. 6453

6404 **Silver Lining: Reduced Relapse with Chronic GVHD after Transplant for MDS**
Ashley M. Eckel and H. Joachim Deeg
See related article, p. 6483

CCR Perspectives in Regulatory Science and Policy

6406 **Regulatory Considerations for Contribution of Effect of Drugs Used in Combination Regimens: Renal Cell Cancer Case Studies**
Jamie R. Brewer, Elaine Chang, Sundeep Agrawal, Harpreet Singh, Daniel L. Suzman, James Xu, Chana Weinstock, Laura L. Fernandes, Joyce Cheng, Lijun Zhang, Diqiong Xie, Kirsten B. Goldberg, Erik W. Bloomquist, Shenghui Tang, Rajeshwari Sridhara, Marc R. Theoret, Richard Pazdur, Amna Ibrahim, and Julia A. Beaver

6412 **Project Orbis: Global Collaborative Review Program**
R. Angelo de Claro, Dianne Spillman, Lauren Tesh Hotaki, Michael Shum, Laila Sofia Mouawad, Gustavo Mendes Lima Santos, Kelly Robinson, Melissa Hunt, Caroline Healy, Agnes Chan, Yee Hoo Looi, Clare Rodrigues, Ulrich-Peter Rohr, Chantal Walther, and Richard Pazdur

CLINICAL TRIALS: TARGETED THERAPY

6417 **Phase Ib Dose-escalation/Expansion Trial of Ribociclib in Combination With Everolimus and Exemestane in Postmenopausal Women with HR⁺, HER2⁻ Advanced Breast Cancer**
Aditya Bardia, Shanu Modi, Mafalda Oliveira, Javier Cortes, Mario Campone, Brigitte Ma, Luc Dirix, Amy Weise, Becker Hewes, Ivan Diaz-Padilla, Yu Han, Priya Deshpande, Tanay S. Samant, Karen Rodriguez Lorenc, Wei He, Fei Su, and Mariana Chavez-MacGregor

6429 **Phase I Trial of Debio 1143, an Antagonist of Inhibitor of Apoptosis Proteins, Combined with Cisplatin Chemoradiotherapy in Patients with Locally Advanced Squamous Cell Carcinoma of the Head and Neck**
Christophe Le Tourneau, Yungan Tao, Carlos Gomez-Roca, Valerie Cristina, Edith Borcoman, Eric Deutsch, Rastislav Bahleda, Valentin Calugaru, Anouchka Modesto, Elisabeth Rouits, Kathrin Gollmer, Gregoire Vuagniaux, Philippa Crompton, Claudio Zanna, Sergio Szyldergemajn, Jean-Pierre Delord, and Jean Bourhis

CLINICAL TRIALS: IMMUNOTHERAPY

6437 **Improved Survival Associated with Local Tumor Response Following Multisite Radiotherapy and Pembrolizumab: Secondary Analysis of a Phase I Trial**
Jason J. Luke, Benjamin E. Onderdonk, Sandeep R. Bhawe, Theodore Karrison, Jeffrey M. Lemons, Paul Chang, Yuanyuan Zha, Tim Carl, Thomas Krausz, Lei Huang, Carlos Martinez, Linda A. Janisch, Robyn D. Hseu, John W. Moroney, Jyoti D. Patel, Nikolai N. Khodarev, Joseph K. Salama, Patrick A. Ott, Gini F. Fleming, Thomas F. Gajewski, Ralph R. Weichselbaum, Sean P. Pitroda, and Steven J. Chmura

6445 **Activity and Safety of Geptanolimab (GB226) for Patients with Unresectable, Recurrent, or Metastatic Alveolar Soft Part Sarcoma: A Phase II, Single-arm Study**
AC Yuankai Shi, Qiqing Cai, Yu Jiang, Gang Huang, Minghong Bi, Baocheng Wang, Yuhong Zhou, Guowen Wang, Hongyan Ying, Zhiwei Tao, Chunmei Shi, Qian Guo, and Chao Gao

TABLE OF CONTENTS

PRECISION MEDICINE AND IMAGING

- 6453** **Spatial and Temporal Heterogeneity of PD-L1 Expression and Tumor Mutational Burden in Gastroesophageal Adenocarcinoma at Baseline Diagnosis and after Chemotherapy**

A | C Katherine I. Zhou, Bryan Peterson, Anthony Serritella, Joseph Thomas, Natalie Reizine, Stephanie Moya, Carol Tan, Yan Wang, and Daniel V.T. Catenacci

See related commentary, p. 6401

- 6464** **Enhanced Detection of Treatment Effects on Metastatic Colorectal Cancer with Volumetric CT Measurements for Tumor Burden Growth Rate Evaluation**

Michael L. Maitland, Julia Wilkerson, Sanja Karovic, Binsheng Zhao, Jessica Flynn, Mengxi Zhou, Patrick Hilden, Firas S. Ahmed, Laurent Dercle, Chaya S. Moskowitz, Ying Tang, Dana E. Connors, Stacey J. Adam, Gary Kelloff, Mithat Gonen, Tito Fojo, Lawrence H. Schwartz, and Geoffrey R. Oxnard

- 6475** **Evaluation of Trends and Prognosis Over Time in Patients with AML Relapsing After Allogeneic Hematopoietic Cell Transplant Reveals Improved Survival for Young Patients in Recent Years**

Ali Bazarbachi, Christoph Schmid, Myriam Labopin, Dietrich Beelen, Igor Wolfgang Blau, Victoria Potter, Riitta Niittyvuopio, Gerard Socié, Didier Blaise, Jaime Sanz, Fabio Ciceri, Iman Abou Dalle, Alexandros Spyridonidis, Gesine Bug, Jordi Esteve, Bipin N. Savani, Arnon Nagler, and Mohamad Mohty

- 6483** **Effects of Acute and Chronic Graft-versus-myelodysplastic Syndrome on Long-term Outcomes Following Allogeneic Hematopoietic Cell Transplantation**

Takaaki Konuma, Ken Ishiyama, Aiko Igarashi, Naoyuki Uchida, Yukiyasu Ozawa, Takahiro Fukuda, Yasunori Ueda, Ken-ichi Matsuoka, Takehiko Mori, Yuta Katayama, Makoto Onizuka, Tatsuo Ichinohe, and Yoshiko Atsuta; for the Adult Myelodysplastic Syndrome Working Group of the Japan Society for Hematopoietic Cell Transplantation

See related commentary, p. 6404

- 6494** **Clinical Outcome-Related Mutational Signatures Identified by Integrative Genomic Analysis in Nasopharyngeal Carcinoma**

Wei Dai, Dittman Lai-Shun Chung, Larry Ka-Yue Chow, Valen Zhuoyou Yu, Lisa Chan Lei, Merrin Man-Long Leong, Candy King-Chi Chan, Josephine Mun-Yee Ko, and Maria Li Lung

- 6505** **Effect of Germline Mutations in Homologous Recombination Repair Genes on Overall Survival of Patients with Pancreatic Adenocarcinoma**

Siddhartha Yadav, Pashtoon M. Kasi, William R. Bamlet, Thanh P. Ho, Eric C. Polley, Chunling Hu, Steven N. Hart, Kari G. Rabe, Nicholas J. Boddicker, Rohan D. Gnanaolivu, Kun Y. Lee, Tricia H. Lindstrom, Gloria M. Petersen, Fergus J. Couch, and Robert R. McWilliams

- 6513** **Development and Validation of a Next-Generation Sequencing-Based Multigene Assay to Predict the Prognosis of Estrogen Receptor-Positive, HER2-Negative Breast Cancer**

Han-Byeol Lee, Sae Byul Lee, Minsu Kim, Sunyoung Kwon, Jeonghee Jo, Jinkyung Kim, Hee Jin Lee, Han-Suk Ryu, Jong Won Lee, Chungyeul Kim, Jaehwan Jeong, Hyoki Kim, Dong-Young Noh, In-Ae Park, Sei-Hyun Ahn, Sun Kim, Sungroh Yoon, Aeree Kim, and Wonshik Han

- 6523** **Gene Expression Signatures of BRCAness and Tumor Inflammation Define Subgroups of Early-Stage Hormone Receptor-Positive Breast Cancer Patients**

Werner Schroth, Florian A. Büttner, Siarhei Kandabarau, Reiner Hoppe, Peter Fritz, Jörg Kumbrink, Thomas Kirchner, Heather A. Brauer, Yuqi Ren, David Henderson, Stephen F. Madden, Georg Sauer, Tanja Fehm, Diethelm Wallwiener, Peter A. Fasching, Thomas Mürdter, Matthias Schwab for The German Tamoxifen and AI Clinicians Group, and Hiltrud Brauch

TRANSLATIONAL CANCER MECHANISMS AND THERAPY

- 6535** **AZD4320, A Dual Inhibitor of Bcl-2 and Bcl-x_L, Induces Tumor Regression in Hematologic Cancer Models without Dose-limiting Thrombocytopenia**

Srividya B. Balachander, Steven W. Criscione, Kate F. Byth, Justin Cidado, Ammar Adam, Paula Lewis, Terry Macintyre, Shenghua Wen, Deborah Lawson, Kathleen Burke, Tristan Lubinski, Jeffrey W. Tyner, Stephen E. Kurtz, Shannon K. McWeeney, Jeffrey Varnes, R. Bruce Diebold, Thomas Gero, Stephanos Ioannidis, Edward J. Hennessy, William McCoull, Jamal C. Saeh, Areyia Tabatabai, Omid Taviana, Nancy Su, Alwin Schuller, Mathew J. Garnett, Patricia Jaaks, Elizabeth A. Coker, Gareth P. Gregory, Andrea Newbold, Ricky W. Johnstone, Eric Gangl, Martin Wild, Michael Zinda, J. Paul Secrist, Barry R. Davies, Stephen E. Fawell, and Francis D. Gibbons

TABLE OF CONTENTS

- 6550 Clinical and Genome-Wide Analysis of Multiple Severe Cisplatin-Induced Neurotoxicities in Adult-Onset Cancer Survivors**
Matthew R. Trendowski, Heather E. Wheeler, Omar El-Charif, Darren R. Feldman, Robert J. Hamilton, David J. Vaughn, Chunkit Fung, Christian Kollmannsberger, Lawrence H. Einhorn, Lois B. Travis, and M. Eileen Dolan
- 6559 Amphiregulin Expression Is a Predictive Biomarker for EGFR Inhibition in Metastatic Colorectal Cancer: Combined Analysis of Three Randomized Trials**
Arndt Stahler, Sebastian Stintzing, Dominik P. Modest, Ingrid Ricard, Clemens Giessen-Jung, Christine Kapaun, Boryana Ivanova, Florian Kaiser, Ludwig Fischer von Weikersthal, Nicolas Moosmann, Andreas Schalhorn, Martina Stauch, Alexander Kiani, Swantje Held, Thomas Decker, Markus Moehler, Jens Neumann, Thomas Kirchner, Andreas Jung, and Volker Heinemann
- 6568 Short-term CDK4/6 Inhibition Radiosensitizes Estrogen Receptor-Positive Breast Cancers**
Andrea M. Pesch, Nicole H. Hirsh, Benjamin C. Chandler, Anna R. Michmerhuizen, Cassandra L. Ritter, Marlie P. Androsiglio, Kari Wilder-Romans, Meilan Liu, Christina L. Gersch, José M. Larios, Lori J. Pierce, James M. Rae, and Corey W. Speers
- 6581 Implications of MYC Rearrangements in Newly Diagnosed Multiple Myeloma**
Nadine Abdallah, Linda B. Baughn, S. Vincent Rajkumar, Prashant Kapoor, Morie A. Gertz, Angela Dispenzieri, Martha Q. Lacy, Suzanne R. Hayman, Francis K. Buadi, David Dingli, Ronald S. Go, Yi L. Hwa, Amie Fonder, Miriam Hobbs, Yi Lin, Nelson Leung, Taxiarchis Kourelis, Rahma Warsame, Mustaqeem Siddiqui, John Lust, Robert A. Kyle, Rhett Ketterling, Leif Bergsagel, Patricia Greipp, and Shaji K. Kumar
- 6589 Preclinical Activity of SAR408701: A Novel Anti-CEACAM5-maytansinoid Antibody-drug Conjugate for the Treatment of CEACAM5-positive Epithelial Tumors**
Stéphanie Decary, Pierre-François Berne, Céline Nicolazzi, Anne-Marie Lefebvre, Tarik Dabdoubi, Béatrice Cameron, Pierrick Rival, Catherine Devaud, Catherine Prades, Hervé Bouchard, Alhassan Cassé, Christophe Henry, Céline Amara, Claire Brillac, Paul Ferrari, Laetitia Maçon, Eric Lacoste, Cecile Combeau, Eric Beys, Souad Naimi, Carlos García-Echeverría, Jean-François Mayaux, and Véronique Blanc
- 6600 Glioblastoma TCGA Mesenchymal and IGS 23 Tumors are Identifiable by IHC and have an Immune-phenotype Indicating a Potential Benefit from Immunotherapy**
Cristina Carrato, Francesc Alameda, Anna Esteve-Codina, Estela Pineda, Oriol Arpi, Maria Martinez-García, Mar Mallo, Marta Gut, Raquel Lopez-Martos, Sonia Del Barco, Teresa Ribalta, Jaume Capellades, Josep Puig, Oscar Gallego, Carlos Mesia, Ana M^a Muñoz-Marmol, Ivan Archilla, Montserrat Arumí, Julie Marie Blanc, Beatriz Bellosillo, Silvia Menendez, Anna Esteve, Silvia Bagué, Ainhoa Hernandez, Jordi Craven-Bartle, Rafael Fuentes, Noemí Vidal, Iban Aldecoa, Nuria de la Iglesia, and Carmen Balana

CORRECTION

- 6610 Correction: The First-week Proliferative Response of Peripheral Blood PD-1⁺ CD8⁺ T Cells Predicts the Response to Anti-PD-1 Therapy in Solid Tumors**
Kyung Hwan Kim, Jinhyun Cho, Bo Mi Ku, Jiae Koh, Jong-Mu Sun, Se-Hoon Lee, Jin Seok Ahn, Jaekyung Cheon, Young Joo Min, Su-Hyung Park, Keunchil Park, Myung-Ju Ahn, and Eui-Cheol Shin

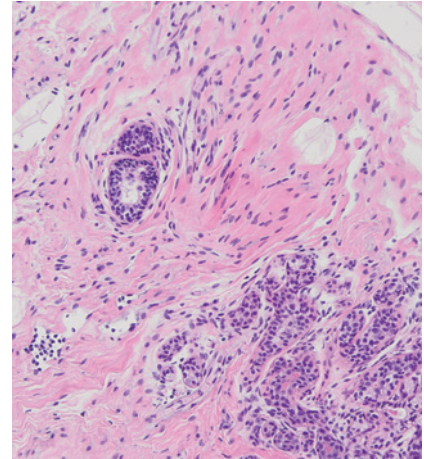
AC AC icon indicates AuthorChoice

For more information please visit www.aacrjournals.org

TABLE OF CONTENTS

ABOUT THE COVER

The cover shows a section of a primary tumor from a Luminal B early-stage breast cancer patient with a high Tumor Inflammation Signature (TIS) score. Immunohistochemical staining shows strong stromal lymphocyte infiltration at several sites. For details, see the article by Schroth and colleagues on page 6523 of this issue.



Clinical Cancer Research

26 (24)

Clin Cancer Res 2020;26:6399-6610.

Updated version Access the most recent version of this article at:
<http://clincancerres.aacrjournals.org/content/26/24>

E-mail alerts [Sign up to receive free email-alerts](#) related to this article or journal.

Reprints and Subscriptions To order reprints of this article or to subscribe to the journal, contact the AACR Publications Department at pubs@aacr.org.

Permissions To request permission to re-use all or part of this article, use this link <http://clincancerres.aacrjournals.org/content/26/24>.
Click on "Request Permissions" which will take you to the Copyright Clearance Center's (CCC) Rightslink site.