

CLINICAL CANCER RESEARCH

TABLE OF CONTENTS

HIGHLIGHTS

4457 Selected Articles from This Issue

SPECIAL FEATURES

CCR Translations

4459 **Unmasking New Promises: Expanding the Antigen Landscape For Antibody-Drug Conjugates**

Honey K. Oberoi and Elena Garralda

See related article, p. 4521

4462 **TP53 Disruption in Chronic Lymphocytic Leukemia Under Ibrutinib: More is Worse?**

Riccardo Bomben, Antonella Zucchetto, Massimo Gentile, and Valter Gattei

See related article, p. 4531

4465 **Ibrutinib Restores Tumor-specific Adaptive Immunity in Chronic Lymphocytic Leukemia**

Clive S. Zent

See related article, p. 4624

Review

4468 **Facts and Hopes in Multiple Myeloma Immunotherapy**

Adam S. Sperling and Kenneth C. Anderson

CCR Drug Updates

4478 **FDA Approval Summary: Fam-Trastuzumab Deruxtecan-Nxki for the Treatment of Unresectable or Metastatic HER2-Positive Breast Cancer**

Preeti Narayan, Christy L. Osgood, Harpreet Singh, Haw-Jyh Chiu, Tiffany K. Ricks, Edwin Chiu Yuen Chow, Junshan Qiu, Pengfei Song, Jingyu Yu, Frances Namuswe, Maria Guitierrez-Lugo, Sherry Hou, William F. Pierce, Kirsten B. Goldberg, Shenghui Tang, Laleh Amiri-Kordestani, Marc R. Theoret, Richard Pazdur, and Julia A. Beaver

PERSPECTIVES

4486 **A Neoadjuvant Chemotherapy Trial for Early Breast Cancer is Impacted by COVID-19: Addressing Vaccination and Cancer Trials Through Education, Equity, and Outcomes**

David A. Potter, Alexandra Thomas, and Hope S. Rugo

CLINICAL TRIALS: TARGETED THERAPY

4491 **Voridasenib, a Dual Inhibitor of Mutant IDH1/2, in Recurrent or Progressive Glioma; Results of a First-in-Human Phase I Trial**

Ingo K. Mellinghoff, Marta Penas-Prado, Katherine B. Peters, Howard A. Burris III, Elizabeth A. Maher, Filip Janku, Gregory M. Cote, Macarena I. de la Fuente, Jennifer L. Clarke, Benjamin M. Ellingson, Saewon Chun, Robert J. Young, Hua Liu, Sung Choe, Min Lu, Kha Le, Islam Hassan, Lori Steelman, Shuchi S. Pandya, Timothy F. Cloughesy, and Patrick Y. Wen

4500 **Role of Tumor-Infiltrating B Cells in Clinical Outcome of Patients with Melanoma Treated With Dabrafenib Plus Trametinib**

Jan C. Brase, Robert F.H. Walter, Alexander Savchenko, Daniel Gusenleitner, James Garrett, Tobias Schimming, Renata Varaljai, Deborah Castelletti, Ju Kim, Naveen Dakappagari, Ken Schultz, Caroline Robert, Georgina V. Long, Paul D. Nathan, Antoni Ribas, Keith T. Flaherty, Boguslawa Karaszewska, Jacob Schachter, Antje Sucker, Kurt W. Schmid, Lisa Zimmer, Elisabeth Livingstone, Eduard Gasal, Dirk Schadendorf, and Alexander Roesch

4511 **First-in-Human Study of PF-06647020 (Cofetuzumab Pelidotin), an Antibody-Drug Conjugate Targeting Protein Tyrosine Kinase 7, in Advanced Solid Tumors**

Michael L. Maitland, Jasjit C. Sachdev, Manish R. Sharma, Victor Moreno, Valentina Boni, Shivaani Kummar, Erica Stringer-Reasor, Nehal Lakhani, Allison R. Moreau, Dawei Xuan, Ray Li, Eric L. Powell, Amy Jackson-Fisher, Michelle Bowers, Shilpa Alekar, Xiaohua Xin, Anthony W. Tolcher, and Emiliano Calvo

TABLE OF CONTENTS

- 4521** **Phase I, First-in-Human Study of the Probody Therapeutic CX-2029 in Adults with Advanced Solid Tumor Malignancies**
A C Melissa Johnson, Anthony El-Khoueiry, Navid Hafez, Nehal Lakhani, Hirva Mamdani, Jordi Rodon, Rachel E. Sanborn, Javier Garcia-Corbacho, Valentina Boni, Mark Stroh, Alison L. Hannah, Song Wang, Henry Castro, and Alexander Spira
See related commentary, p. 4459
- 4531** **Clinical Outcomes in Patients with Multi-Hit *TP53* Chronic Lymphocytic Leukemia Treated with Ibrutinib**
Christian Brieghel, Kathrine Aarup, Mathias H. Torp, Michael A. Andersen, Christina W. Yde, Xin Tian, Adrian Wiestner, Inhye E. Ahn, and Carsten U. Niemann
See related commentary, p. 4462
- 4539** **Blood Biomarker Landscape in Patients with High-risk Nonmetastatic Castration-Resistant Prostate Cancer Treated with Apalutamide and Androgen-Deprivation Therapy as They Progress to Metastatic Disease**
Matthew R. Smith, Shibu Thomas, Michael Gormley, Simon Chowdhury, David Olmos, Stéphane Oudard, Felix Y. Feng, Yashoda Rajpurohit, Karen Urtishak, Deborah S. Ricci, Brendan Rooney, Angela Lopez-Gitlitz, Margaret Yu, Alexander W. Wyatt, Mark Li, Gerhardt Attard, and Eric J. Small
- 4549** **Toxicity and Efficacy of Concurrent Androgen Deprivation Therapy, Pelvic Radiotherapy, and Radium-223 in Patients with *De Novo* Metastatic Hormone-Sensitive Prostate Cancer**
Philip G. Turner, Suneil Jain, Aidan Cole, Arthur Grey, Darren Mitchell, Kevin M. Prise, Alan R. Hounsell, Conor K. McGarry, Sandra Biggart, and Joe M. O'Sullivan
- 4566** **A Phase Ib Open-Label, Multicenter Study of Inhaled DV281, a TLR9 Agonist, in Combination with Nivolumab in Patients with Advanced or Metastatic Non-small Cell Lung Cancer**
Edward B. Garon, Alexander I. Spira, Melissa Johnson, Lyudmila Bazhenova, Joseph Leach, Amy L. Cummings, Albert Candia, Robert L. Coffman, Mary J. Janatpour, Robert Janssen, Erick Gamelin, and Laura Q.M. Chow
- 4574** **Neoadjuvant Selicrelumab, an Agonist CD40 Antibody, Induces Changes in the Tumor Microenvironment in Patients with Resectable Pancreatic Cancer**
Katelyn T. Byrne, Courtney B. Betts, Rosemarie Mick, Shamilene Sivagnanam, David L. Bajor, Daniel A. Laheru, E. Gabriela Chiorean, Mark H. O'Hara, Shannon M. Liudahl, Craig Newcomb, Cécile Alanio, Ana P. Ferreira, Byung S. Park, Takuya Ohtani, Austin P. Huffman, Sara A. Väyrynen, Andressa Dias Costa, Judith C. Kaiser, Andreeanne M. Lacroix, Colleen Redlinger, Martin Stern, Jonathan A. Nowak, E. John Wherry, Martin A. Cheever, Brian M. Wolpin, Emma E. Furth, Elizabeth M. Jaffee, Lisa M. Coussens, and Robert H. Vonderheide
- ## PRECISION MEDICINE AND IMAGING
- 4587** **Clinical and Functional Characterization of Atypical *KRAS/NRAS* Mutations in Metastatic Colorectal Cancer**
Jonathan M. Loree, Yucai Wang, Muddassir A. Syed, Alexey V. Sorokin, Oluwadara Coker, Joanne Xiu, Benjamin A. Weinberg, Ari M. Vanderwalde, Anteneh Tesfaye, Victoria M. Raymond, Benjamin Miron, Gabi Tarcic, Ori Zelichov, Russell R. Broaddus, Patrick Kwok Shing Ng, Kang Jin Jeong, Yiu Huen Tsang, Gordon B. Mills, Michael J. Overman, Axel Grothey, John L. Marshall, and Scott Kopetz
- 4599** **Identification of a Novel Inflamed Tumor Microenvironment Signature as a Predictive Biomarker of Bacillus Calmette-Guérin Immunotherapy in Non-Muscle-Invasive Bladder Cancer**
Jeffrey S. Damrauer, Kyle R. Roell, Markia A. Smith, Xuezheng Sun, Erin L. Kirk, Katherine A. Hoadley, Halei C. Benefield, Gopakumar Iyer, David B. Solit, Matthew I. Milowsky, William Y. Kim, Matthew E. Nielsen, Sara E. Wobker, Guido Dalbagni, Hikmat A. Al-Ahmadie, Andrew F. Olshan, Bernard H. Bochner, Helena Furberg, Melissa A. Troester, and Eugene J. Pietzak
- ## CLINICAL TRIALS: IMMUNOTHERAPY
- 4557** **Pilot Phase II Trial of Neoadjuvant Immunotherapy in Locoregionally Advanced, Resectable Cutaneous Squamous Cell Carcinoma of the Head and Neck**
Renata Ferrarotto, Moran Amit, Priyadharsini Nagarajan, M. Laura Rubin, Ying Yuan, Diana Bell, Adel K. El-Naggar, Jason M. Johnson, William H. Morrison, David I. Rosenthal, Bonnie S. Glisson, Faye M. Johnson, Charles Lu, Frank E. Mott, Bitá Esmali, Eduardo M. Diaz Jr, Paul W. Gidley, Ryan P. Goepfert, Carol M. Lewis, Randal S. Weber, Jennifer A. Wargo, Sreyashi Basu, Fei Duan, Shalini S. Yadav, Padmanee Sharma, James P. Allison, Jeffrey N. Myers, and Neil D. Gross

TABLE OF CONTENTS

TRANSLATIONAL CANCER MECHANISMS AND THERAPY

- 4610** **Evolution of Castration-Resistant Prostate Cancer in ctDNA during Sequential Androgen Receptor Pathway Inhibition**
Matti Annala, Sinja Taavitsainen, Daniel J. Khalaf, Gillian Vandekerkhove, Kevin Beja, Joonatan Sipola, Evan W. Warner, Cameron Herberts, Amanda Wong, Simon Fu, Daygen L. Finch, Conrad D. Oja, Joanna Vergidis, Muhammad Zulfiqar, Bernhard J. Eigl, Christian K. Kollmansberger, Matti Nykter, Martin E. Gleave, Kim N. Chi, and Alexander W. Wyatt
- 4624** **Select Antitumor Cytotoxic CD8⁺ T Clonotypes Expand in Patients with Chronic Lymphocytic Leukemia Treated with Ibrutinib**
Maria Joao Baptista, Sivasubramanian Baskar, Erika M. Gaglione, Keyvan Keyvanfar, Inhye E. Ahn, Adrian Wiestner, and Clare Sun
See related commentary, p. 4465
- 4634** **Pyrotinib Treatment in Patients With HER2-positive Metastatic Breast Cancer and Brain Metastasis: Exploratory Final Analysis of Real-World, Multicenter Data**
Munawar Anwar, Qitong Chen, Dengjie Ouyang, Shouman Wang, Ning Xie, Quchang Ouyang, Peizhi Fan, Liyuan Qian, Gannong Chen, Enxiang Zhou, Lei Guo, Xiaowen Gu, Boning Ding, Xiaohong Yang, Liping Liu, Chao Deng, Zhi Xiao, Jing Li, Yunqi Wang, Shan Zeng, Jinhui Hu, Wei Zhou, Bo Qiu, Zhongming Wang, Jie Weng, Mingwen Liu, Yi Li, Tiegang Tang, Jianguo Wang, Hui Zhang, Bin Dai, Wuping Tang, Tao Wu, Maoliang Xiao, Xiantao Li, Hailong Liu, Lai Li, and Wenjun Yi

- 4642** **Immune Activation and Microbial Translocation as Prognostic Biomarkers for AIDS-Related Non-Hodgkin Lymphoma in the AMC-034 Study**
Laura E. Martínez, Shelly Lensing, Di Chang, Larry I. Magpantay, Ronald Mitsuyasu, Richard F. Ambinder, Joseph A. Sparano, Otoniel Martínez-Maza, and Marta Epeldegui
- 4652** **SOX11 Inhibitors Are Cytotoxic in Mantle Cell Lymphoma**
Shashidhar S. Jatiani, Stephanie Christie, Violetta V. Leshchenko, Rinku Jain, Abhijeet Kapoor, Paola Bisignano, Clement Lee, H. Ümit Kaniskan, Donna Edwards, Fanye Meng, Alessandro Laganà, Youssef Youssef, Adrian Wiestner, Lapo Alinari, Jian Jin, Marta Filizola, Aneel K. Aggarwal, and Samir Parekh

CORRECTION

- 4664** **Correction: Synthetic Lethal Screens Reveal Cotargeting FAK and MEK as a Multimodal Precision Therapy for GNAQ-Driven Uveal Melanoma**
Justine S. Paradis, Monica Acosta, Robert Saddawi-Konefka, Ayush Kishore, Simone Lubrano, Frederico Gomes, Nadia Arang, Manoela Tiago, Silvia Coma, Xingyu Wu, Kyle Ford, Chi-Ping Day, Glenn Merlino, Prashant Mali, Jonathan A. Pachter, Takami Sato, Andrew E. Aplin, and J. Silvio Gutkind

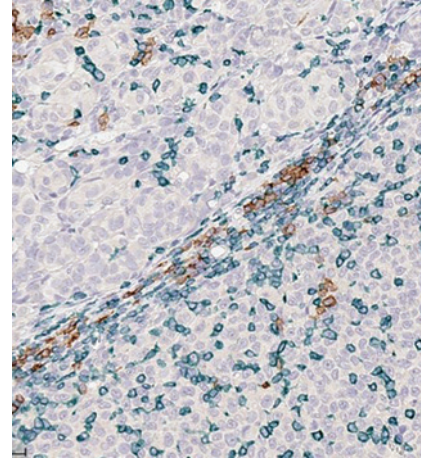
AC icon indicates AuthorChoice

For more information please visit www.aacrjournals.org

TABLE OF CONTENTS

ABOUT THE COVER

The cover shows a section of a pretherapeutic tumor sample from a patient with metastatic melanoma. Immunohistochemical staining shows T- and B-lymphocyte interactions in the stroma compartment by dual CD3/CD19 staining. Connected bands represent spatial proximity distribution. For details, see the article by Brase and colleagues on page 4500 of this issue.



Clinical Cancer Research

27 (16)

Clin Cancer Res 2021;27:4457-4664.

Updated version Access the most recent version of this article at:
<http://clincancerres.aacrjournals.org/content/27/16>

E-mail alerts [Sign up to receive free email-alerts](#) related to this article or journal.

Reprints and Subscriptions To order reprints of this article or to subscribe to the journal, contact the AACR Publications Department at pubs@aacr.org.

Permissions To request permission to re-use all or part of this article, use this link <http://clincancerres.aacrjournals.org/content/27/16>.
Click on "Request Permissions" which will take you to the Copyright Clearance Center's (CCC) Rightslink site.