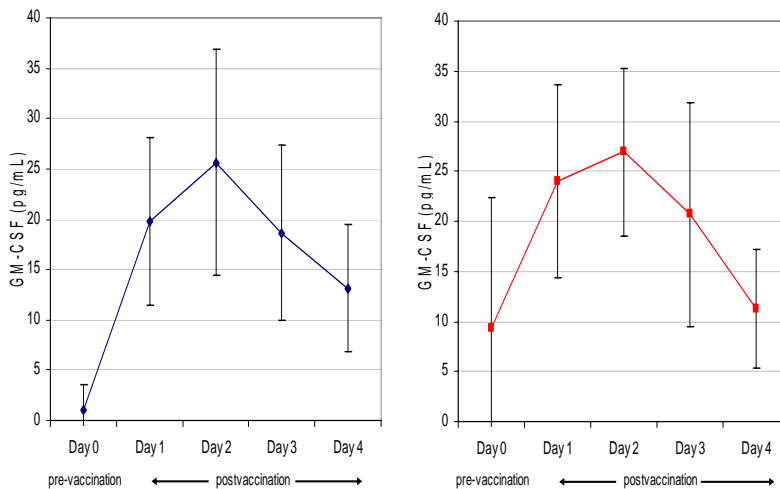


Supplementary Figure S2 . Mean serum concentrations of GM-CSF detected in patients treated with immunotherapy alone and with immunotherapy + Cy. Serum GM-CSF concentrations were evaluated after the first cycle of treatment for subjects in Cohorts A and B, and after the third treatment cycle for a subset of subjects in Cohort B.

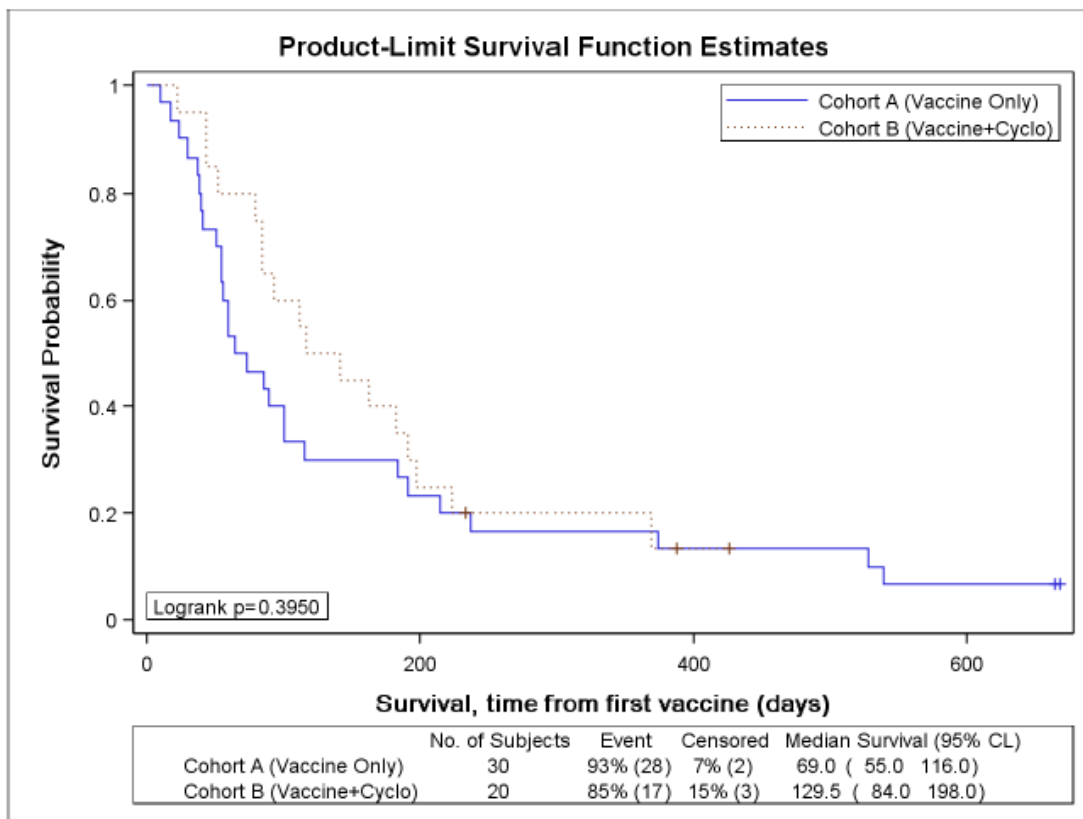
A. Mean serum GM-CSF levels for 16 patients treated in Cohort A (5 patients) and Cohort B (11 patients) following treatment cycle 1. **B.** Mean serum GM-CSF levels for 5 patients following treatment cycle 3 (all 5 patients from cohort B). Additional subject samples in both cohorts were not available for analysis. All samples were run simultaneously in 6 replicates and included a World Health Organization GM-CSF control standard. Plotted are the mean levels in pg/ml and standard deviations for the first 4 days following treatment on cycle 1 and cycle 3.

A. Cohort A and B post treatment 1 N=16 B. Cohort A and B post treatment 3 N=5



Supplementary Figure S3.

Kaplan Meier plot of survival of subjects treated in cohorts A and B. Shown are the survival data for all subjects treated from day 1 of treatment cycle 1. Solid line = Cohort A that received immunotherapy only. Dotted line = Cohort B that received Cytoxan + immunotherapy.



Supplementary Table S1: Median Time to Progression or Death

	Cohort A (N = 30)	Cohort B (N = 20)	Total (N = 50)
Median time to clinical progression/death (days)	42	57	44
95% CI	[41 – 55]	[41 – 105]	[41 – 60]
Range	10 – 668+	23 – 191	10 – 668+
Median time to clinical treatment failure (days)	41	55	42
95% CI	[30 – 42]	[41 – 105]	[40 – 49]
Range	10 – 358	21 – 187	10 – 358
Median time to death (days from first vaccine dose)	69	130	91
95% CI	[55 – 116]	[84 – 198]	[65 – 142]
Range	10 – 668+	23 – 426+	10 – 668+