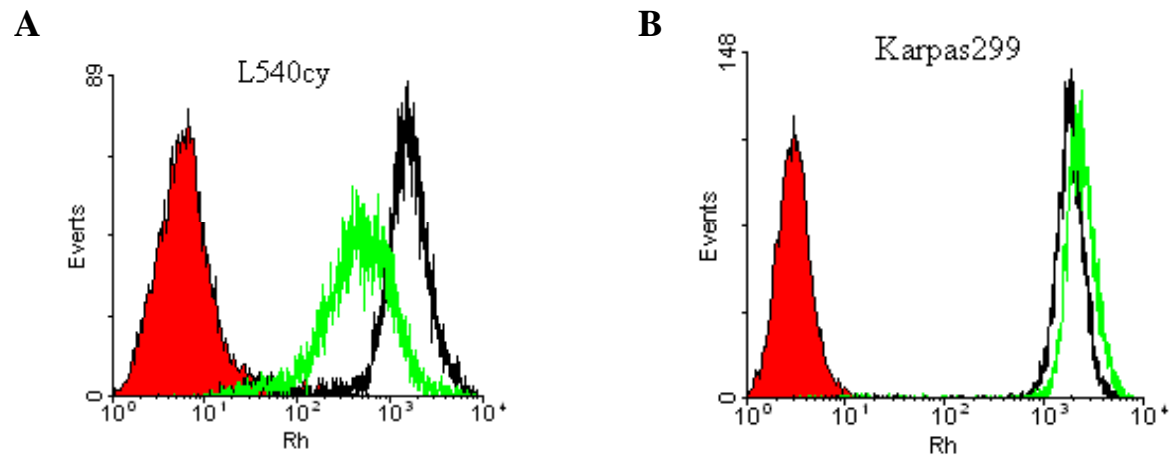


Supplementary Figure 1



Supplementary Figure 1. L540cy and Karpas299 cells were loaded with rhodamine 123 with (black) and without (green) 10 μ M verapamil in the culture medium. The loaded cells were washed into fresh medium with or without 10 μ M verapamil and incubated at 37 $^{\circ}$ C for 1.5 hr and then examined by FACS. Red histograms represent unloaded cells.