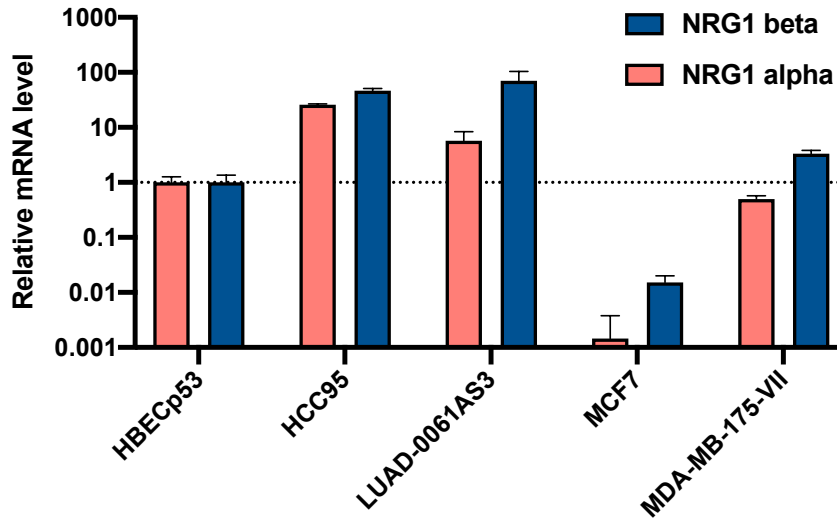


Supplementary Figure S1.

A



B

		Relative mRNA Expression (95% CI)	
Cell Line	<i>NRG1</i> Alteration	NRG1-alpha mRNA	NRG1-beta mRNA
HBECP53	None	1 (0.79-1.26)	1 (0.734-1.36)
LUAD-0061AS3	<i>SLC3A2-NRG1</i>	5.7 (3.89-8.34)	70.39 (47.84-103.58)
HCC-95	<i>NRG1</i> amplification	26 (25.29-26.73)	46.70 (42.60-51.19)
MCF-7	None	0.001 (0.0006-0.0038)	0.015 (0.011-0.020)
MDA-MB-175-VII	<i>DOC4-NRG1</i>	0.5 (0.43-0.57)	3.30 (2.93-3.81)

**Supplementary Figure S1. Expression of NRG1-alpha and NRG1-beta mRNA in patient-derived cells with *NRG1* alterations.** mRNA expression was determined using TaqMan probes that were specific for the alpha or beta isoform of *NRG1*. The resulting values are depicted as a bar graph (A) and a table (B). Expression levels in the immortalized, non-tumor HBECP53 cells was set as 1 and all other values are expressed relative to this. MCF-7 cells are breast cancer cells that do not harbor an *NRG1* fusion. The 95% confidence interval (CI) is given in brackets.