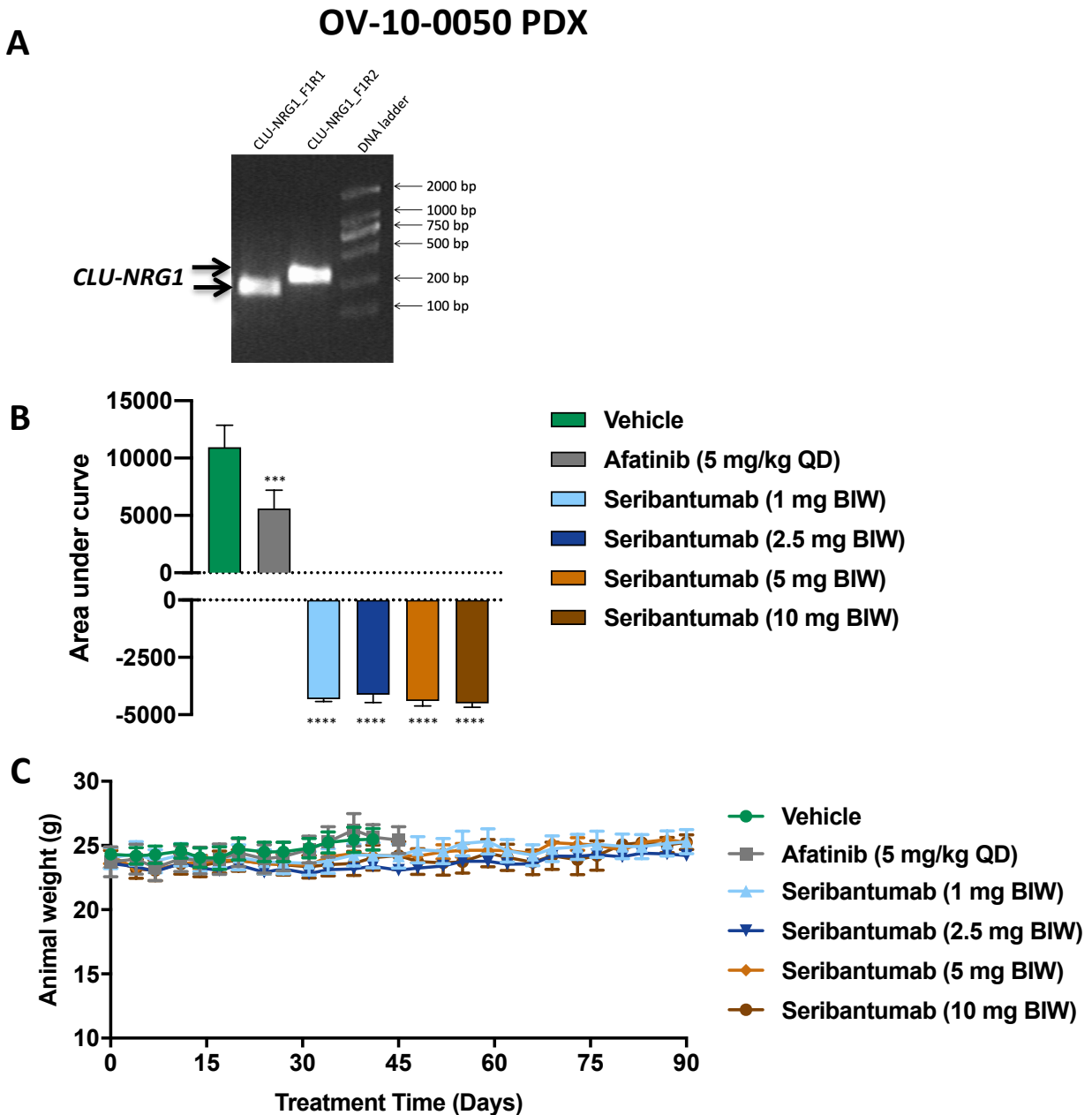


Supplementary Figure S6.



Supplementary Figure S6. Efficacy of seribantumab in an ovarian cancer PDX model with *NRG1* fusion. (A) Expression of *CLU-NRG1* fusion in OV-10-0050 PDX tissue. RT-PCR was performed using forward primers targeting *CLU* and two reverse primers targeting different regions of *NRG1*. **(B)** Area under curve analysis up to day 27. *** $P=0.0003$, compared to vehicle **** $P<0.0001$, compared to vehicle. **(C)** Animal weight was assessed twice weekly. Results represent the mean \pm SEM.