

Supplementary 1, Rahman *et. al.*

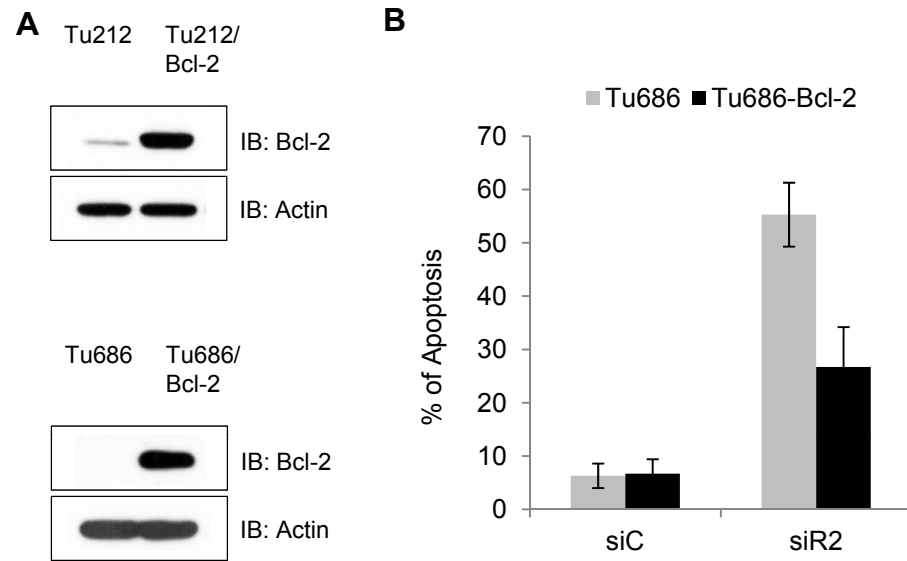


Figure S1. (A) Western blotting was performed for the indicated proteins in Tu212 and Bcl-2 overexpressing Tu212 (Tu212/Bcl-2) cell lines (upper panel) and in Tu686 and Bcl-2 overexpressing Tu686 (Tu686/Bcl-2) cell lines (lower panel) **(B)** Apoptosis analysis (error bars are mean \pm SD from 3 independent experiments) of indicated cell lines upon treatment with siC or siR2.

Supplementary 2, Rahman *et. al.*

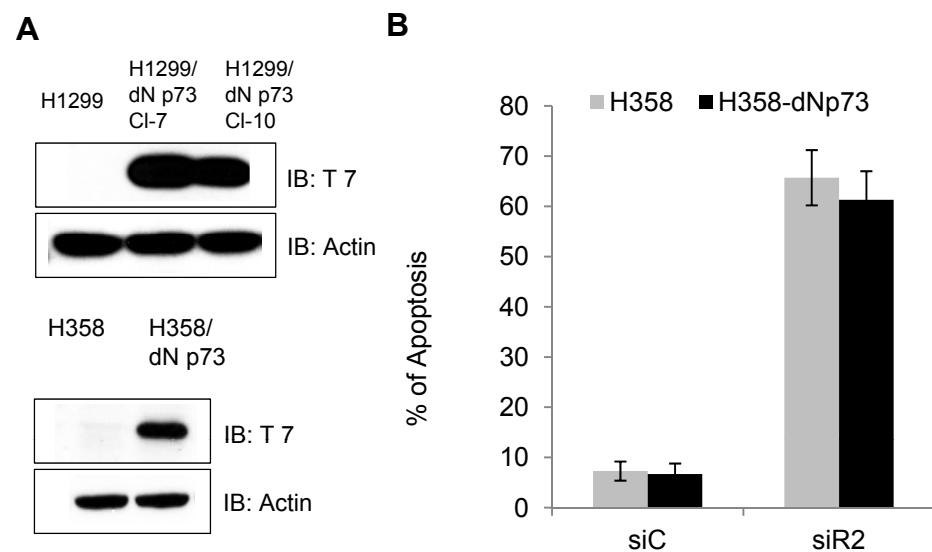


Figure S2. (A) Western blotting was performed for the indicated proteins in H1299 and two clones of dominant negative p73 overexpressing H1299 (H1299/dN p73 cl-7 and cl-10) cell lines (upper panel) and in H358 dominant negative p73 overexpressing H358 (H358/dN) cell lines (lower panel). **(B)** Apoptosis analysis (error bars are mean \pm SD from 3 independent experiments) of indicated cell lines upon treatment with siC or siR2.

Supplementary 3, Rahman *et. al.*

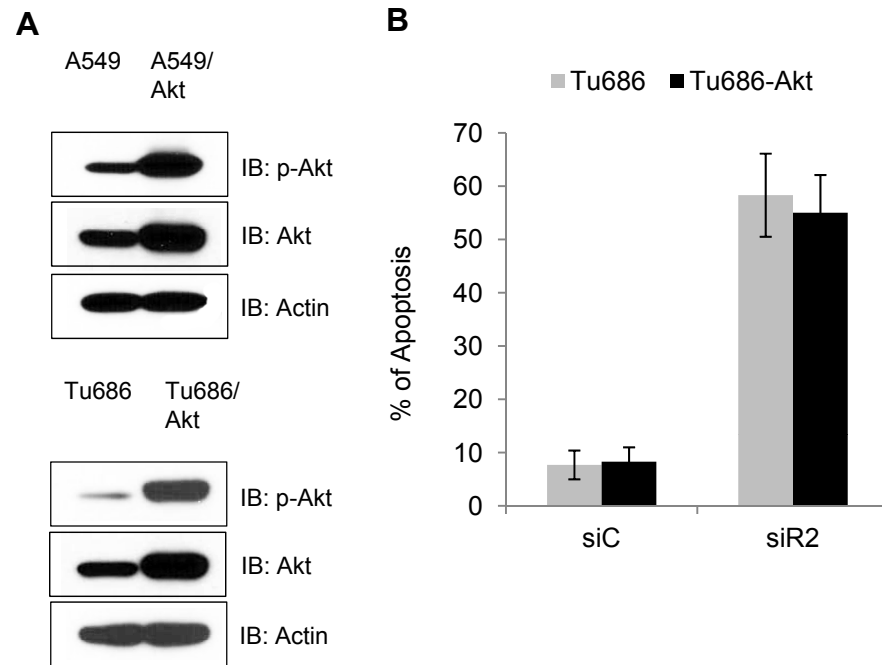


Figure S3. (A) Western blotting was performed for the indicated proteins in A549 and Akt overexpressing A549 (A549/Akt) cell lines (upper panel) and in Tu686 and Akt overexpressing Tu686 (Tu686/Akt) cell lines (lower panel) **(B)** Apoptosis analysis (error bars are mean \pm SD from 3 independent experiments) of indicated cell lines upon treatment with siC or siR2.

Supplementary 4, Rahman *et. al.*

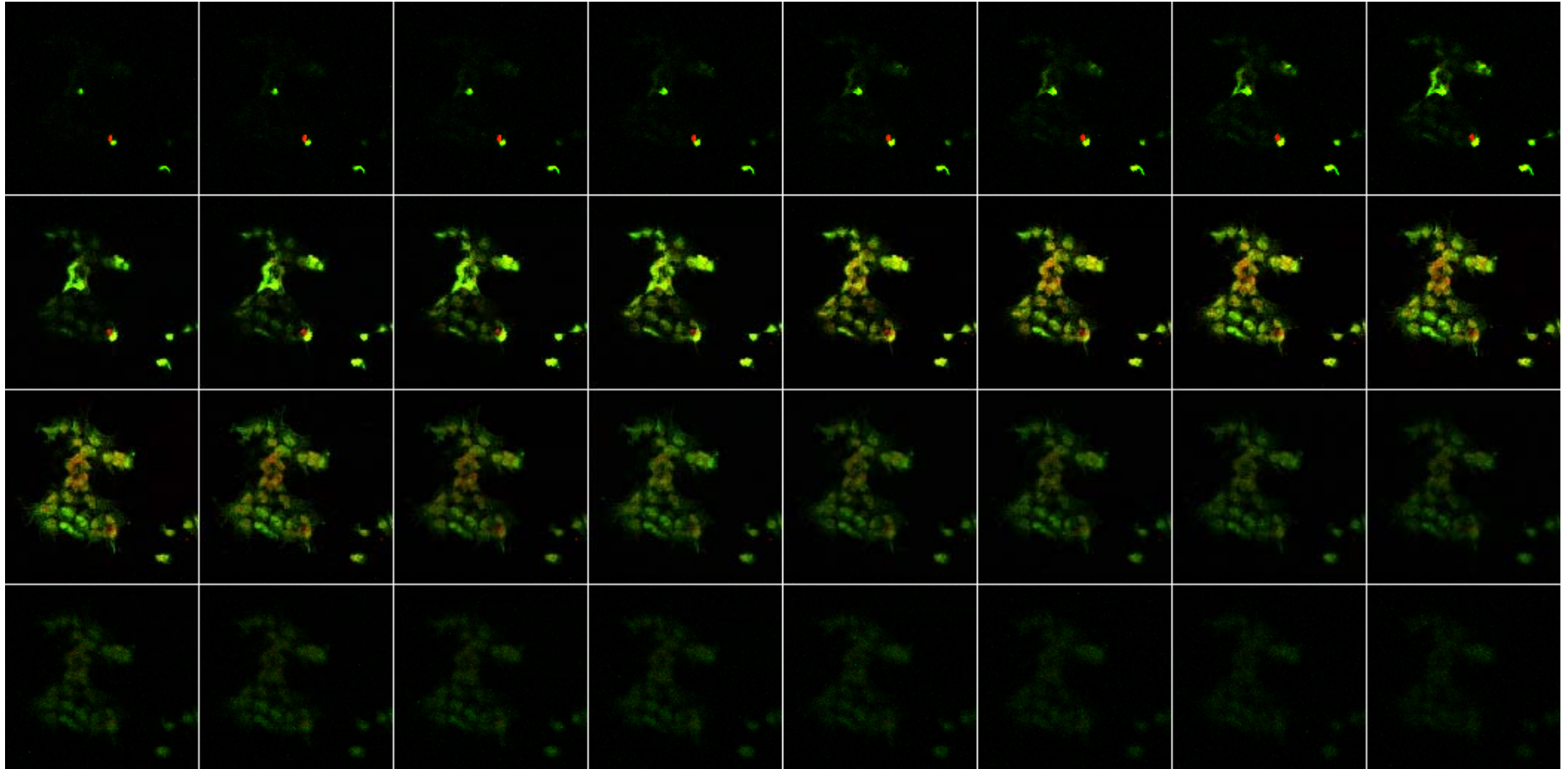


Figure S4. Gallery images of a z-stack. Tu212 cells were stained with anti-RRM2 (green), anti-Bcl-2 (red) and DAPI (blue). A z-stack of optical sections was created at 0.59 μm intervals using a confocal microscope (LSM 510; Carl Zeiss MicroImaging, Inc.). A total of 32 images were collected, shown in a gallery of merged images collected in the z-stack in a single display.

Supplementary 5, Rahman *et. al.*

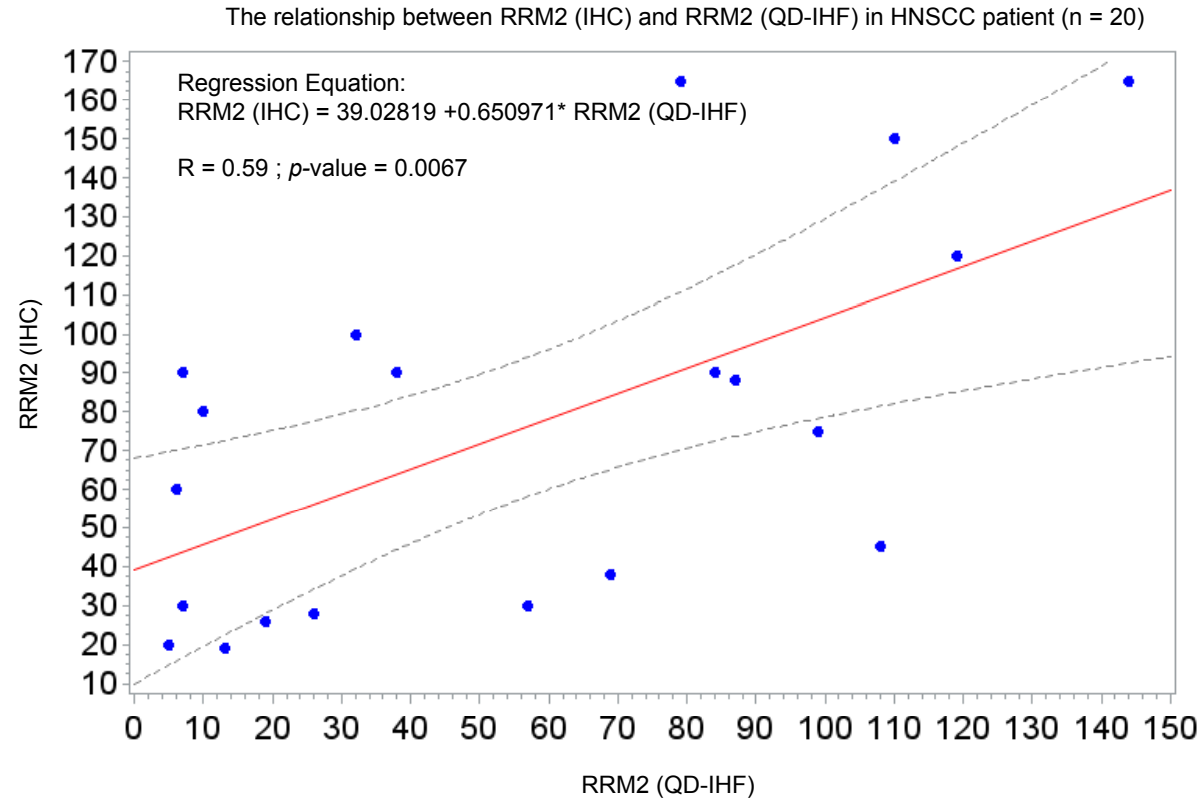


Figure S5. The relationship between RRM2 (IHC) and RRM2 (QD-IHF) in HNSCC. Spearman's correlation coefficient was estimated between RRM2 (IHC) and RRM2 (QD-IHF) expression level in tumor tissues from HNSCC patients.

Supplementary 6, Rahman *et. al.*

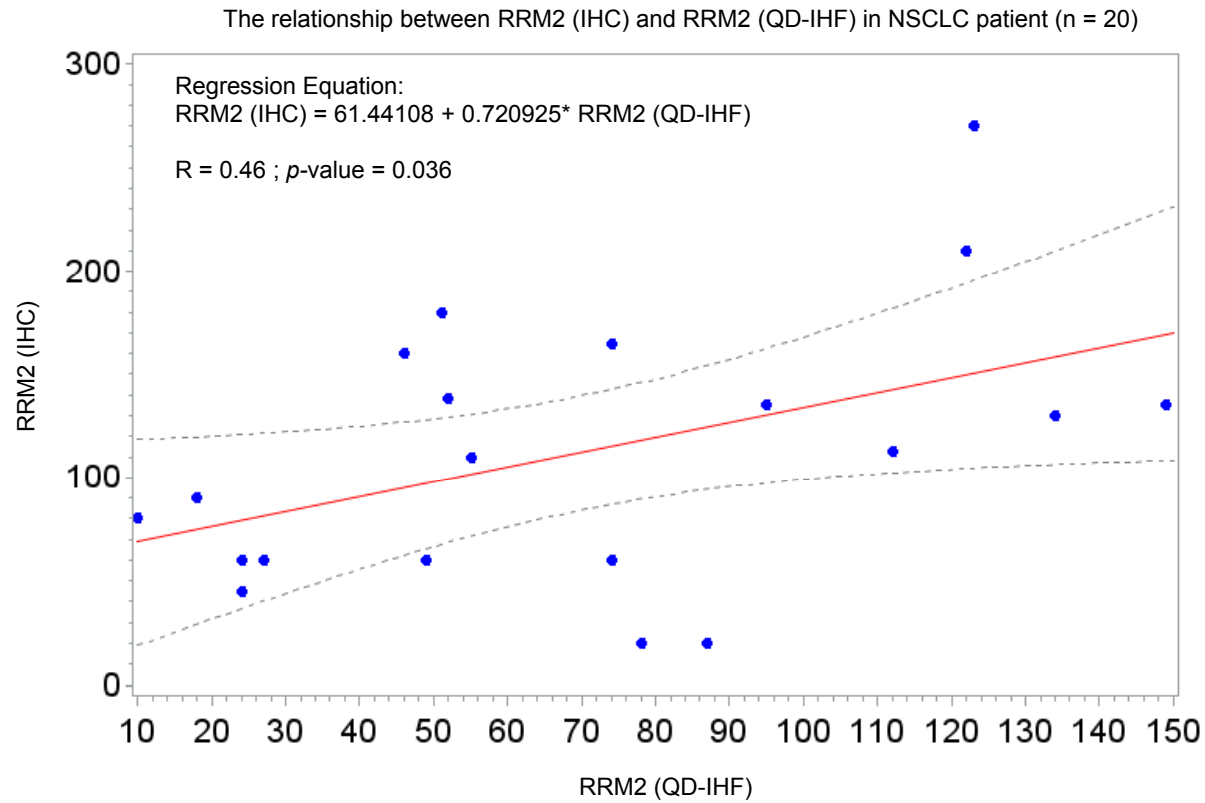


Figure S6. The relationship between RRM2 (IHC) and RRM2 (QD-IHF) in NSCLC. Spearman's correlation coefficient was estimated between RRM2 (IHC) and RRM2 (QD-IHF) expression levels in tumor tissues from NSCLC patients.